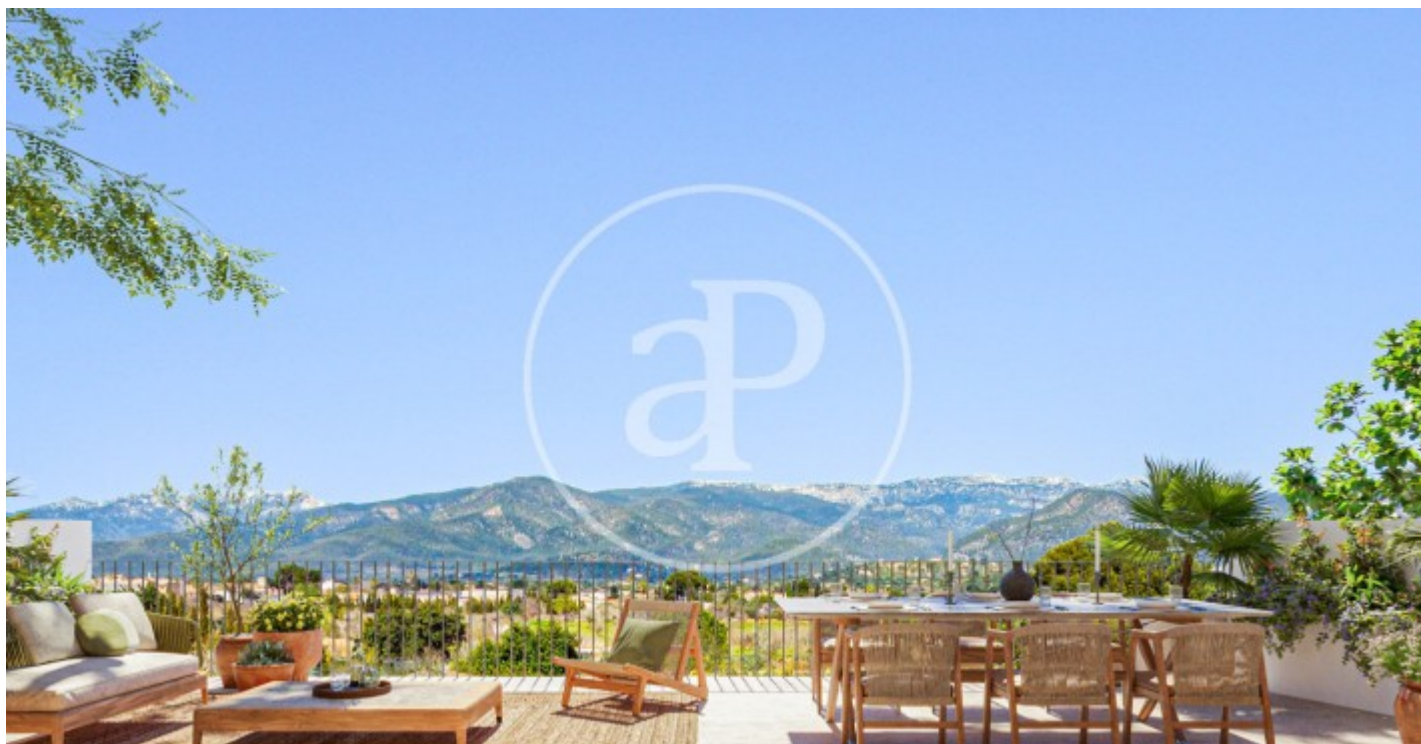


(Santa María del Camí)

Ref: ONPM2312004



## House for sale in Santa Maria

Situated on a quiet street in the cosy and spectacular village of Santa Maria, the two semi-detached houses 'Casas Baronia' are just a stroll away from the centre of the village with its lively cafes, restaurants and people. With a traditional yet impeccable façade, the large wooden doors open onto a wonderful 3 storey house which includes a private garage, a garden with swimming pool as well as 3 terraces facing the stunning Tramuntana mountain range. Encompassing a perfectly crafted blend of traditional Mallorcan architecture with contemporary living, Casas Baronia leaves nothing to be desired. The interior of the townhouse focuses on open spaces and natural light inside the house boasts high ceilings supported by wooden beams, as well as large metal framed glass doors leading to the outdoor terrace. The ground floor consists of an open plan dining room spacious enough for dining tables, as well as a kitchen with direct access to the 55 m2 garden. The kitchen offers meticulously crafted wooden furniture and an island ideal for cooking with family and friends. The upper floor welcomes you to a 50 m2 multipurpose living room with fireplace, where the panoramic views of the [...]

Santa María del Camí /  
Santa María del Camí

Surface  
456 m<sup>2</sup> - 456 m<sup>2</sup>  
Units  
2  
Completion  
Q4 2025

- ✓ Views
- ✓ Boxroom
- ✓ Terrace
- ✓ Backyard
- ✓ Has parking

Price from 2,450,000 €



(Santa María del Camí)

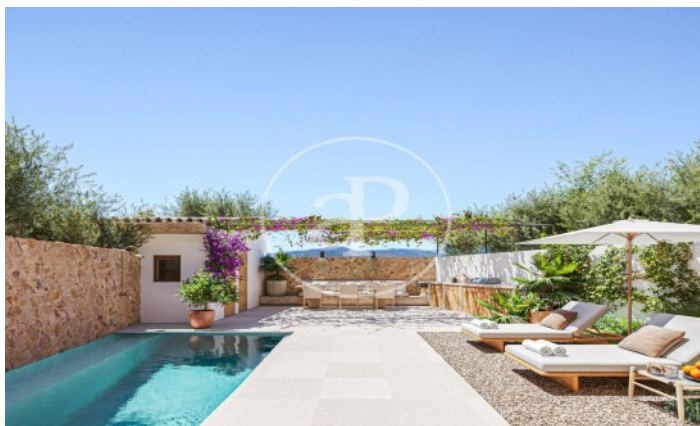
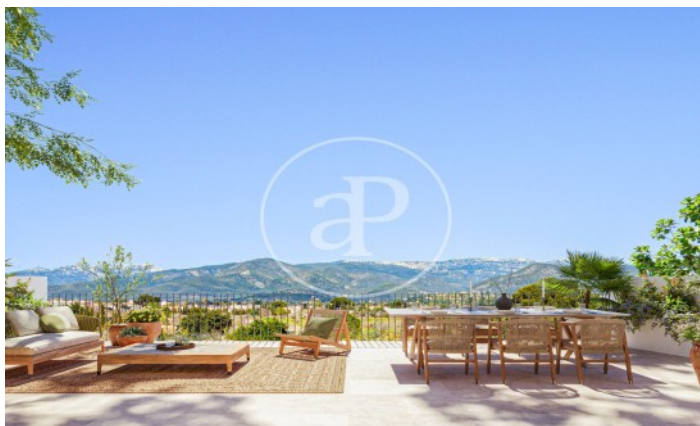
Ref: ONPM2312004

### Units in this development

Type	Unit	Surface	Terrace	Bedrooms	Bathrooms	Price	State
House	Bajo 29b	456.90 m <sup>2</sup>	143.15 m <sup>2</sup>	3	4	€ 2,450,000	Available

(Santa María del Camí)

Ref: ONPM2312004





(Santa María del Camí)

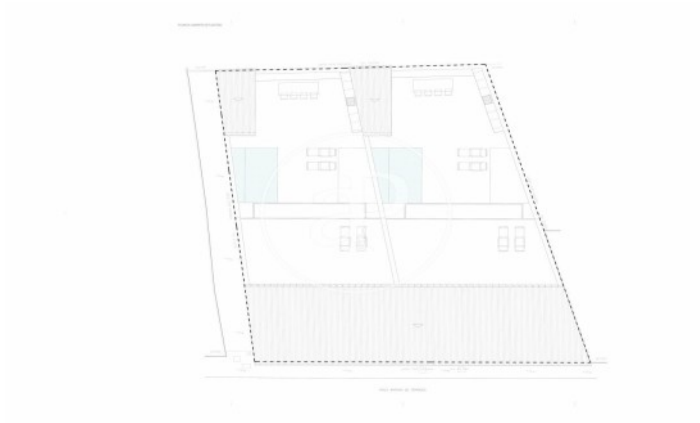
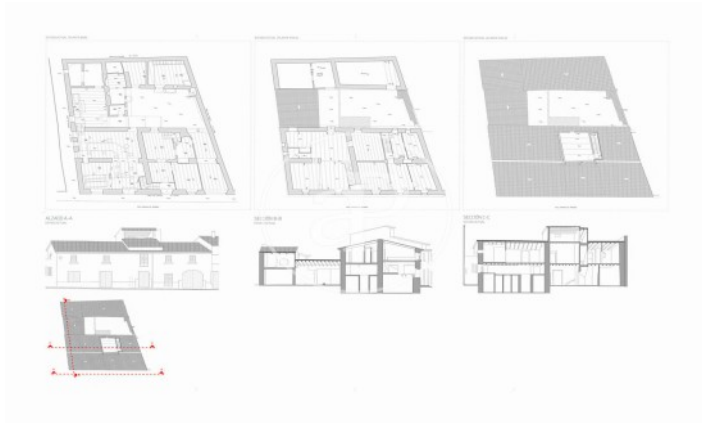
Ref: ONPM2312004





(Santa María del Camí)

Ref: ONPM2312004



The information about any property is not binding to any offer or contract. Any verbal or written declaration made by aProperties with regards to the value or condition of the property should not be considered accurate or factual. The pictures make reference to some parts of the property at the times that they were taken. The areas, dimensions and distances that are given are approximate and should be checked by the client. The images are computer generated and are just an approximate indication of the real appearance of the property; these may change at any time. The information with regards to the property may also change at any time.

Contact us today for more information or to arrange a viewing

Tel: 871 16 01 60

[apropertiespalma@aproperties.es](mailto:apropertiespalma@aproperties.es)

<https://www.aproperties.es>