



Santa Eugènia, Santa María del Camí

REF. APM2502010

# House for rent in Santa Eugenia with terraces and views

## Features

- ✓ Views
- ✓ Heating
- ✓ Boxroom
- ✓ AACC
- ✓ Terrace
- ✓ Backyard
- ✓ Has parking

Price

**2,000 €**

Surface

**250 m<sup>2</sup>**

Bedrooms

**4**

Bathrooms

**3**



## Spectacular semi-detached house of 190 sqm located in Santa Eugenia.

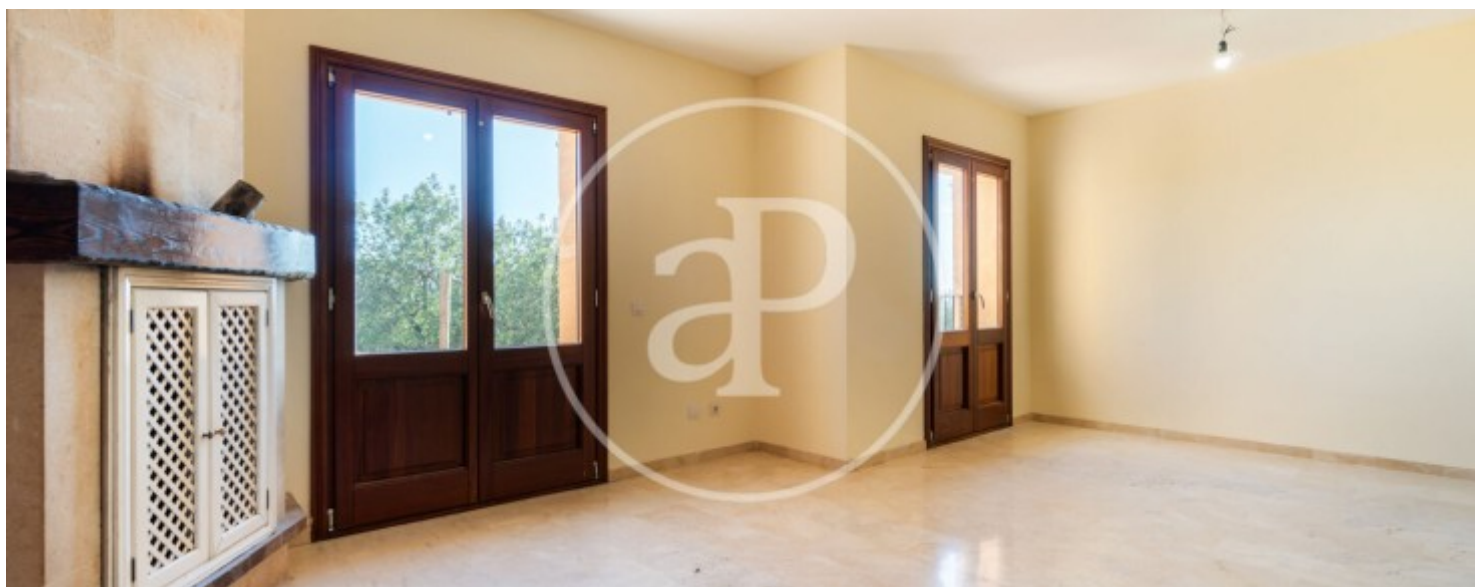
The house, twelve years old, is built on a plot of 400 sqm. It is a charming house with stone walls and the character of the Majorcan houses, all this in harmony with the comforts of a modern construction. The property is distributed on two floors. On the first floor, we find an entrance hall, a bathroom, a double bedroom and a fully equipped kitchen with all appliances with a large laundry room and pantry. A large living room with fireplace communicates with the terrace. On the upper floor there are three double bedrooms, two fully equipped bathrooms, one of them en suite, a dressing room or

single room and a balcony overlooking the valley. The house is rented with its own garage with capacity for a large vehicle, which in turn offers space for storage. A unique opportunity to live just 22 kilometers from the center of Palma, in a natural environment, with all the facilities of the charming village of Santa Eugenia: restaurants, supermarkets, sports center, and a variety of services. It is rented unfurnished. Can you imagine living here? We are waiting for your call!

**Contact us,**  
we will be happy to assist you,  
to offer you more details and information.

Santa Eugènia, Santa Maria del Camí

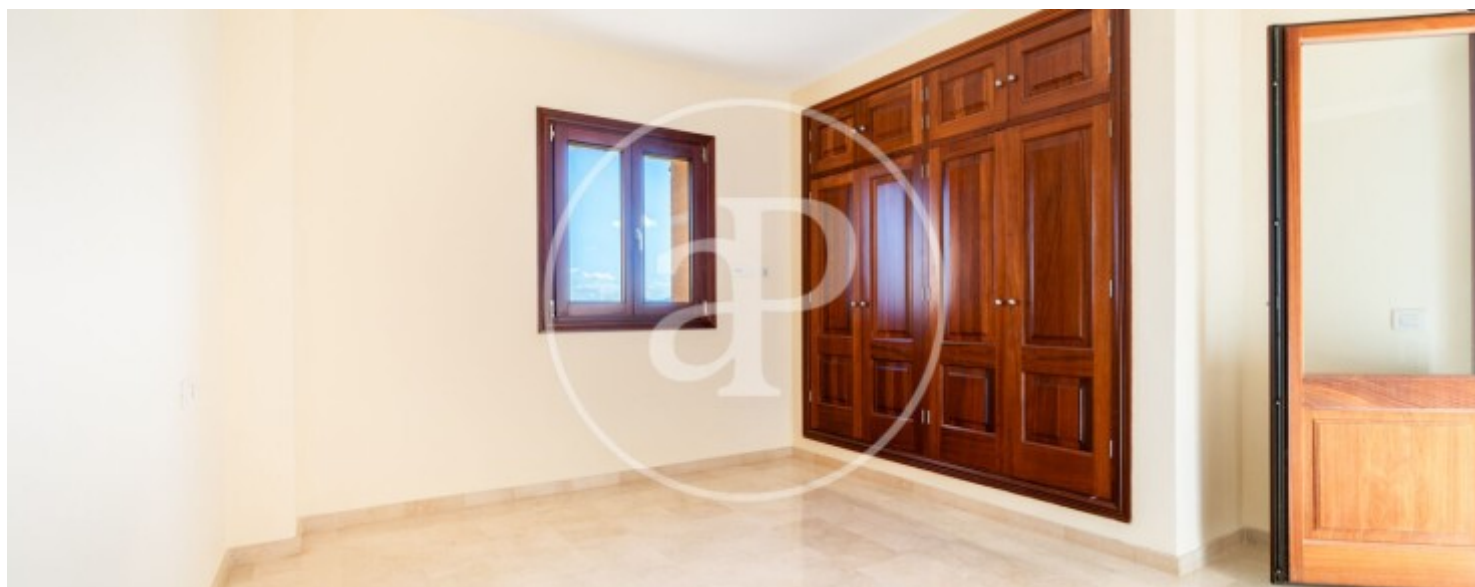
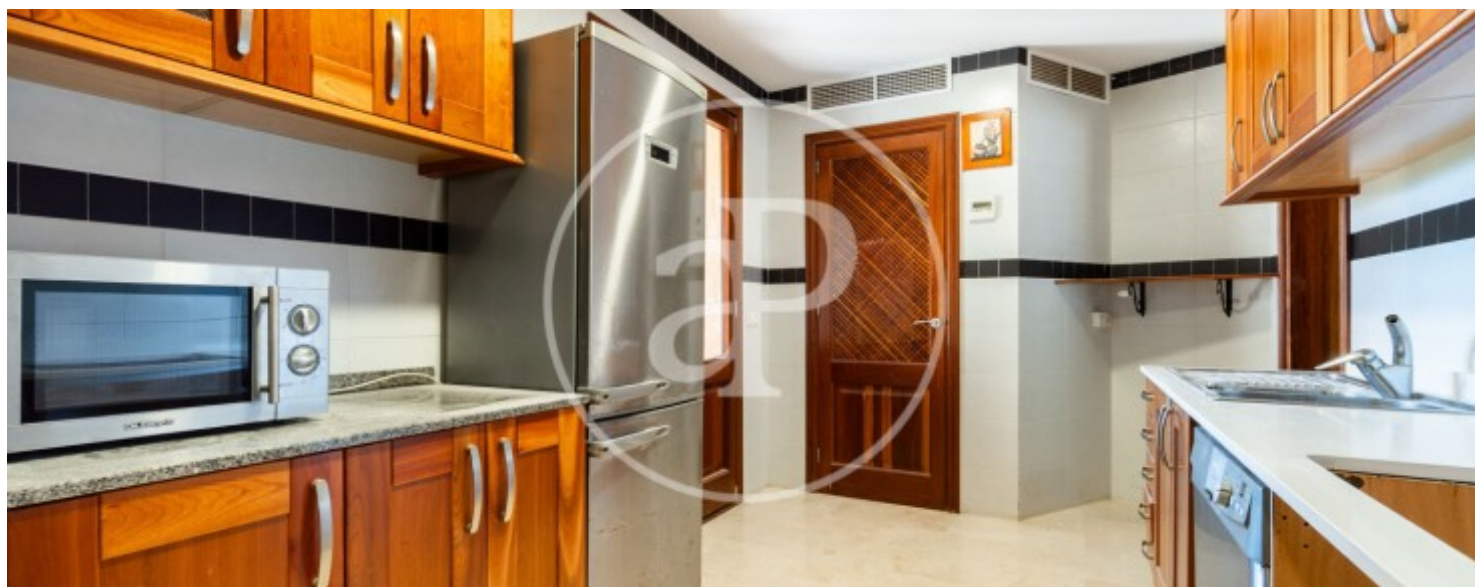
REF. APM2502010





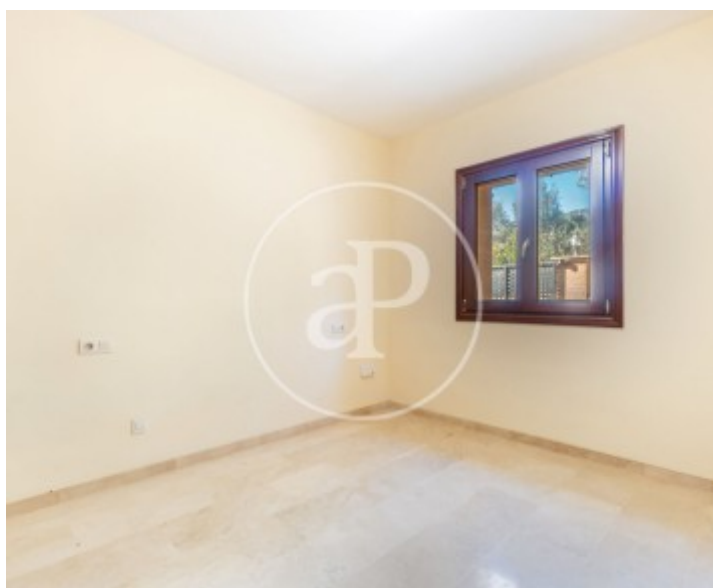
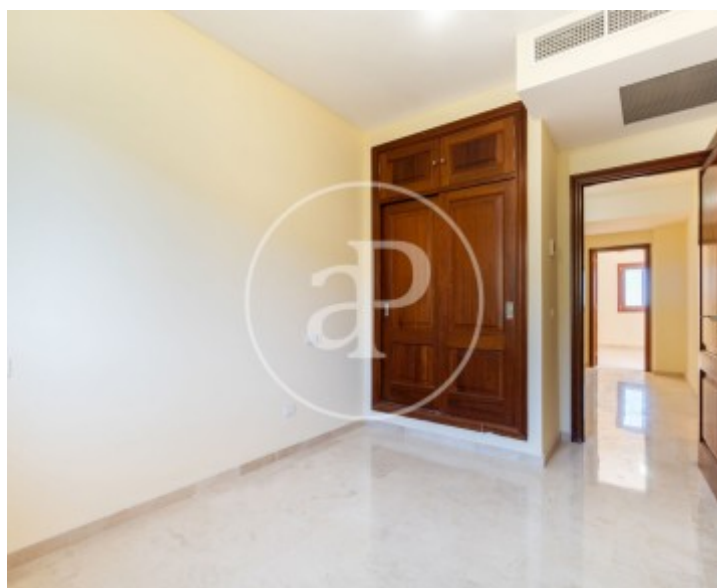
Santa Eugènia, Santa Maria del Camí

REF. APM2502010



Santa Eugènia, Santa Maria del Camí

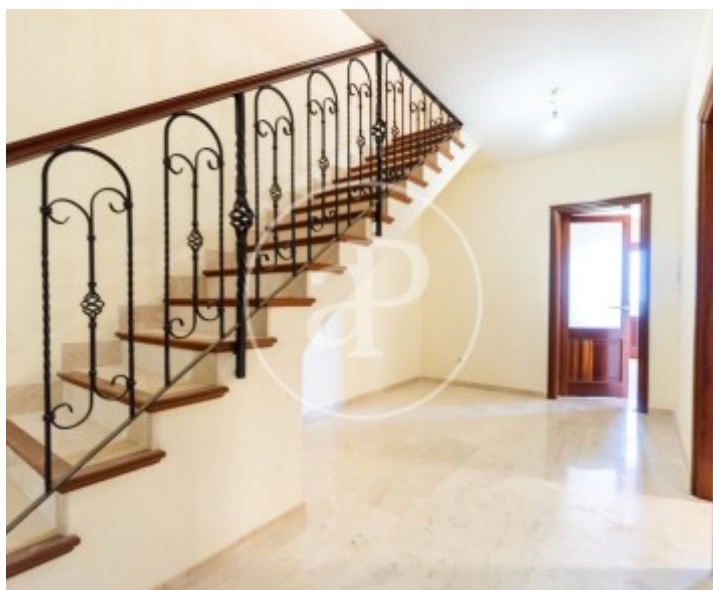
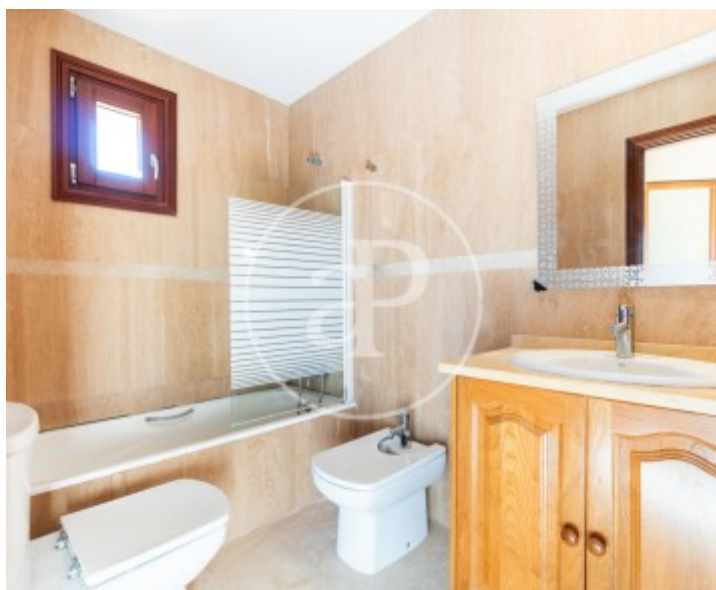
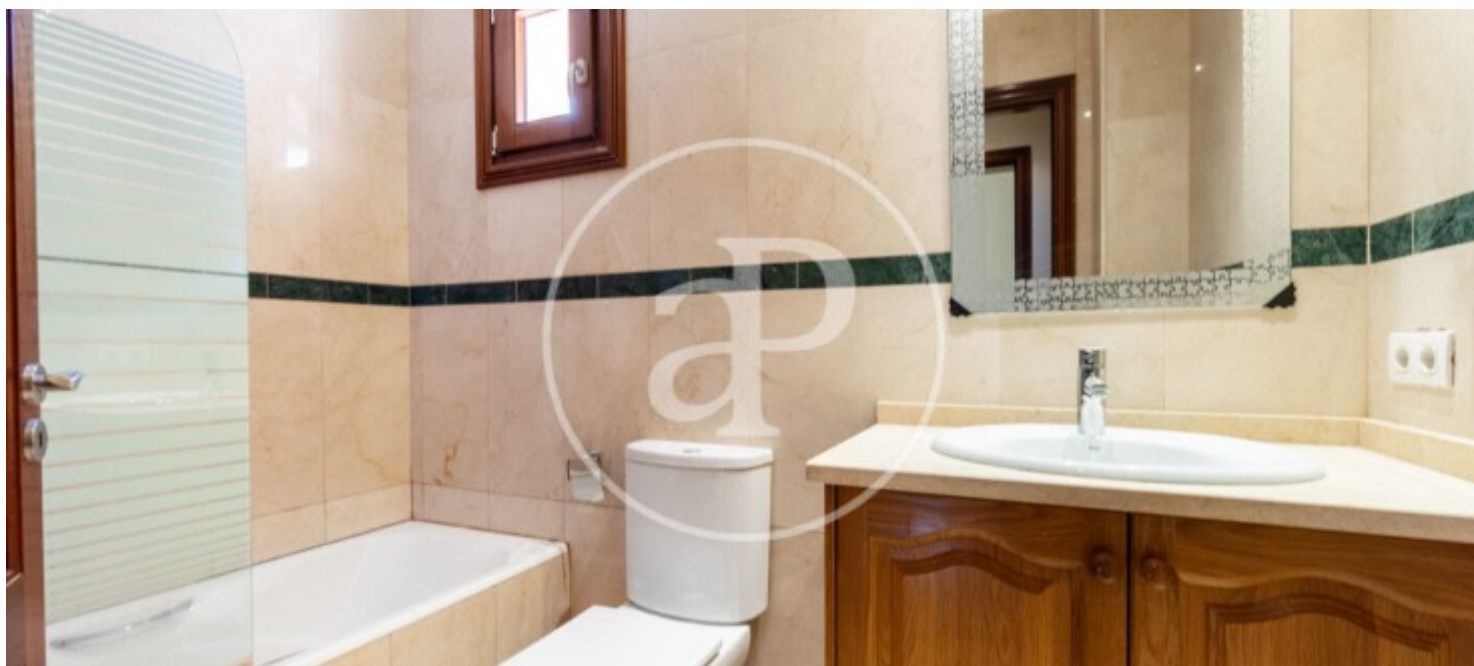
REF. APM2502010





Santa Eugènia, Santa María del Camí

REF. APM2502010



The information about any property is not binding to any offer or contract. Any verbal or written declaration made by aProperties with regards to the value or condition of the property should not be considered accurate or factual. The pictures make reference to some parts of the property at the times that they were taken. The areas, dimensions and distances that are given are approximate and should be checked by the client. The images are computer generated and are just an approximate indication of the real appearance of the property; these may change at any time. The information with regards to the property may also change at any time.

For **more information** or  
to make an appointment

[apropertiespalma@aproperties.es](mailto:apropertiespalma@aproperties.es)  
Tel: 871 16 01 60  
[www.aproperties.es](http://www.aproperties.es)