



(Ribes)

Ref: ONB2601001



## *Bellmar - Vilanoveta Residencial*

Bellmar – Vilanoveta Residencial is an off-plan new-build development consisting of 20 exclusive homes, designed for those seeking space, comfort, and a property with strong value potential, in a quiet and well-connected residential setting. A project developed by GLOBAL HOMES and marketed by Aproproperties, it features contemporary Mediterranean architecture, modern specifications, and a clear family-oriented approach. Initial launch phase · Priority Access In this first phase of commercialization, priority access is offered to a limited selection of 6 homes, available before the full launch of the project. This initial phase is aimed at early buyers who wish to access Bellmar – Vilanoveta Residencial from the outset in order to benefit from an initial launch price and to choose the home that best suits their needs. Spacious and well-laid-out homes The development offers 3- and 4-bedroom homes with functional layouts and generous living spaces that enhance natural light and everyday comfort. All homes are corner units, allowing for cross ventilation and natural light regardless of orientation. Spacious living-dining rooms with access to balconies or [...]

Sant Pere de Ribes / Ribes

Unit 5 3<sup>a</sup>

Completion Q4 2027

### FEATURES

Surface 115 m<sup>2</sup> / 14 m<sup>2</sup> terrace

4 Rooms

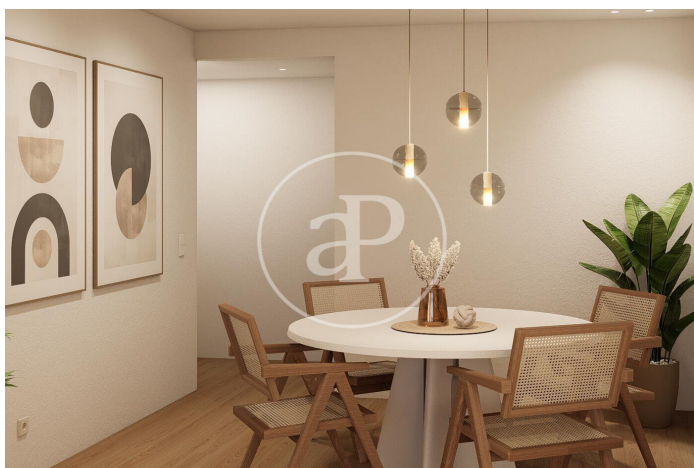
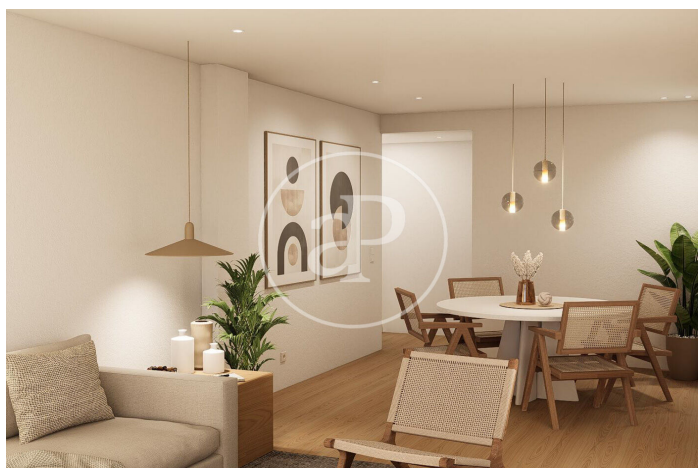
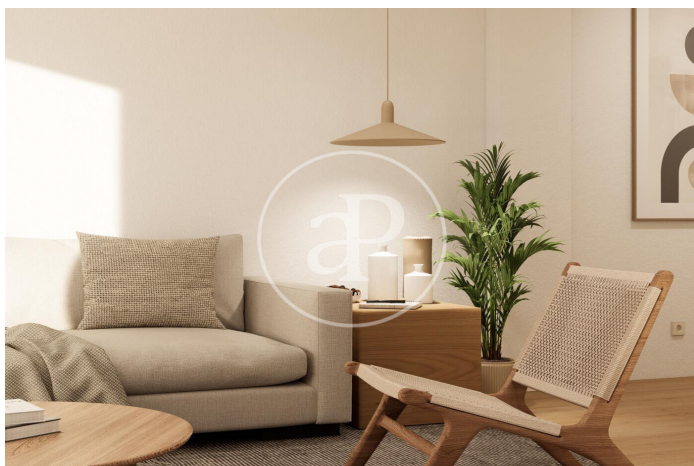
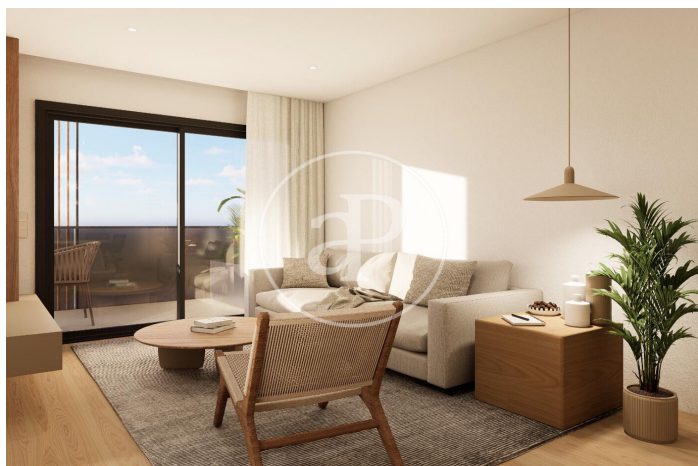
2 Toilets

- ✓ Views
- ✓ Heating
- ✓ AACC
- ✓ Terrace
- ✓ Pool
- ✓ Lift
- ✓ Has parking

Price 420,000 €

(Ribes)

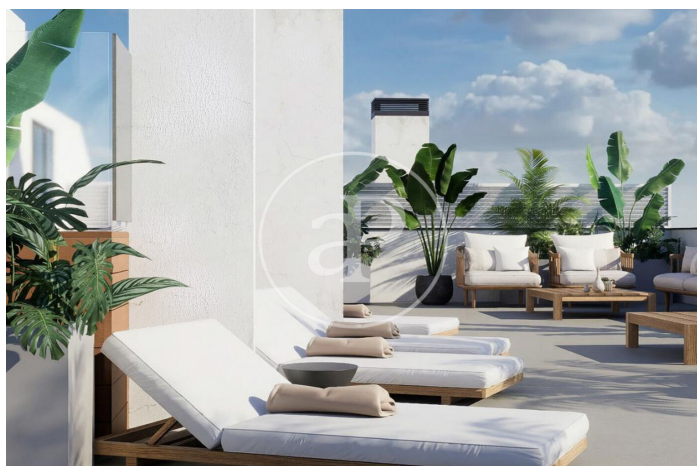
Ref: ONB2601001





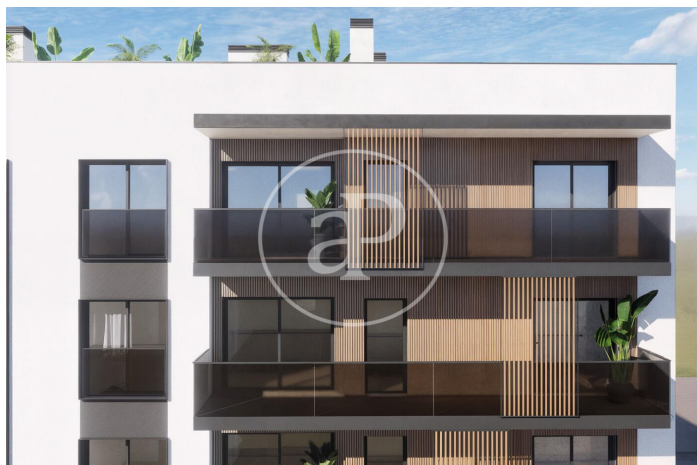
(Ribes)

Ref: ONB2601001



(Ribes)

Ref: ONB2601001



The information about any property is not binding to any offer or contract. Any verbal or written declaration made by aProperties with regards to the value or condition of the property should not be considered accurate or factual. The pictures make reference to some parts of the property at the times that they were taken. The areas, dimensions and distances that are given are approximate and should be checked by the client. The images are computer generated and are just an approximate indication of the real appearance of the property; these may change at any time. The information with regards to the property may also change at any time.

Contact us today for more information or to arrange a viewing

Tel: 93 528 89 08   [apropertiesbarcelona@aproperties.es](mailto:apropertiesbarcelona@aproperties.es)   <https://www.aproperties.es>