



Can Melich, Sant Just Desvern

REF. VB1703024

Family house in Can Melich, Sant Just

Features

- ✓ Views
- ✓ Backyard
- ✓ Has parking

Price

989,000 €

Surface

378 m²

Plot surface

569 m²

Bedrooms

5

Bathrooms

3



In Can Melich, a residential area of Sant Just, we find this family house with spectacular views and good orientation.

The housing is built on three floors. It has a floor with five bedrooms; two of them double en suite with access to a terrace with the same views. In the access floor we find a living-dining room, an outside office kitchen and an office. All bedrooms are outward-facing and with lots of natural light. In addition, it has a large garden with barbecue, parking for three cars and a storage room. The property needs to be updated.

Contact us,
we will be happy to assist you,
to offer you more details and information.

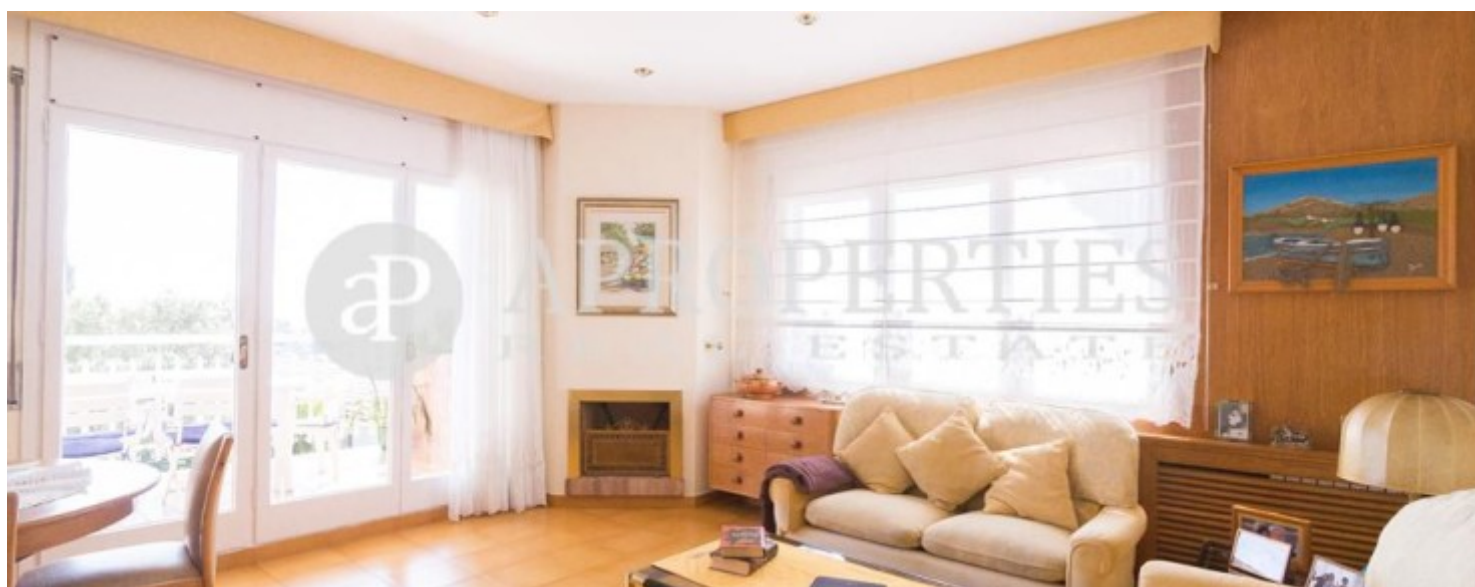
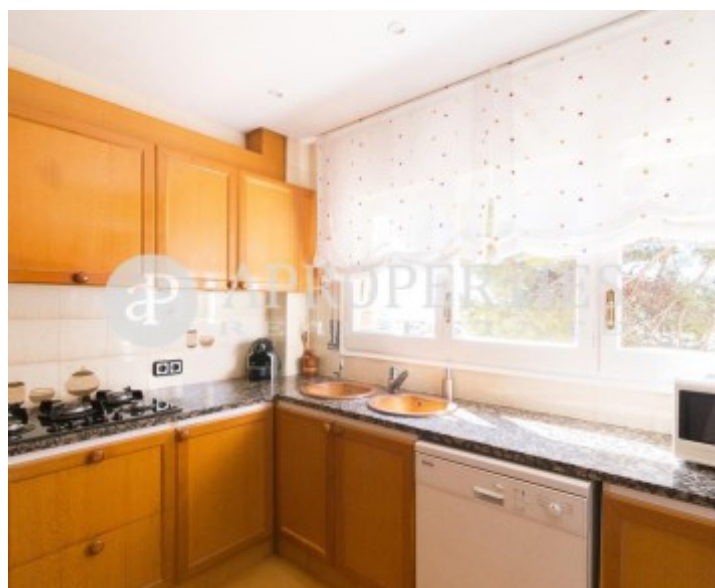
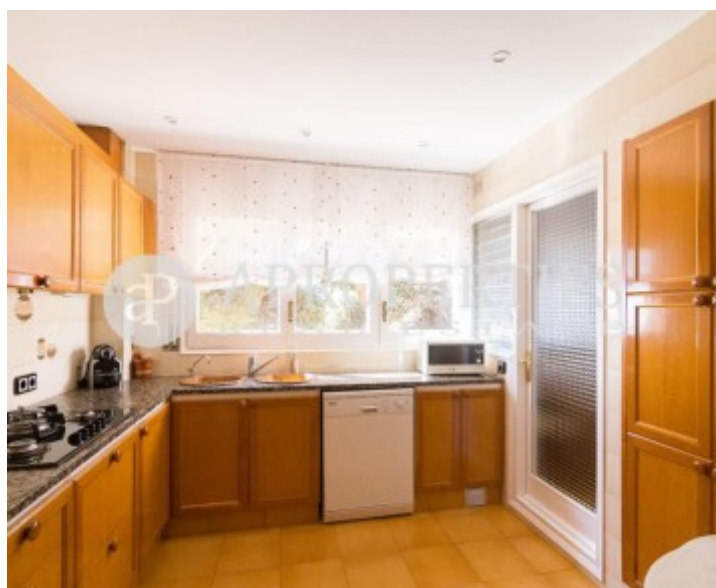
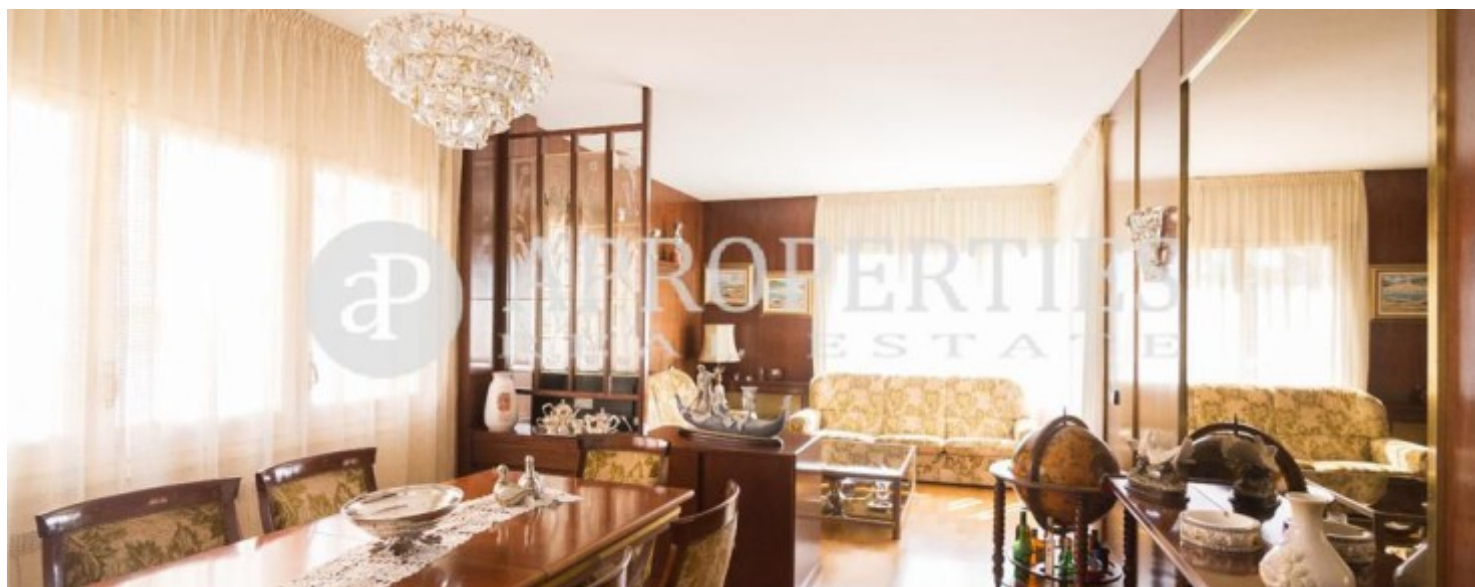
Can Melich, Sant Just Desvern

REF. VB1703024



Can Melich, Sant Just Desvern

REF. VB1703024



Can Melich, Sant Just Desvern

REF. VB1703024



Can Melich, Sant Just Desvern

REF. VB1703024



The information about any property is not binding to any offer or contract. Any verbal or written declaration made by aProperties with regards to the value or condition of the property should not be considered accurate or factual. The pictures make reference to some parts of the property at the times that they were taken. The areas, dimensions and distances that are given are approximate and should be checked by the client. The images are computer generated and are just an approximate indication of the real appearance of the property; these may change at any time. The information with regards to the property may also change at any time.

For **more information** or
to make an appointment

apropertiesbarcelona@aproperties.es
Tel: 93 528 89 08
www.aproperties.es