



Sant Joan

REF. VPM2509008

Traditional Mallorcan village house or sale in Vilafranca de Bonany

Features

- ✓ Views
- ✓ Terrace
- ✓ Gym
- ✓ Boxroom
- ✓ Backyard
- ✓ Has parking

Surface

292 m²

Plot surface

291 m²

Bedrooms

5

Bathrooms

2

Price

495,000 €



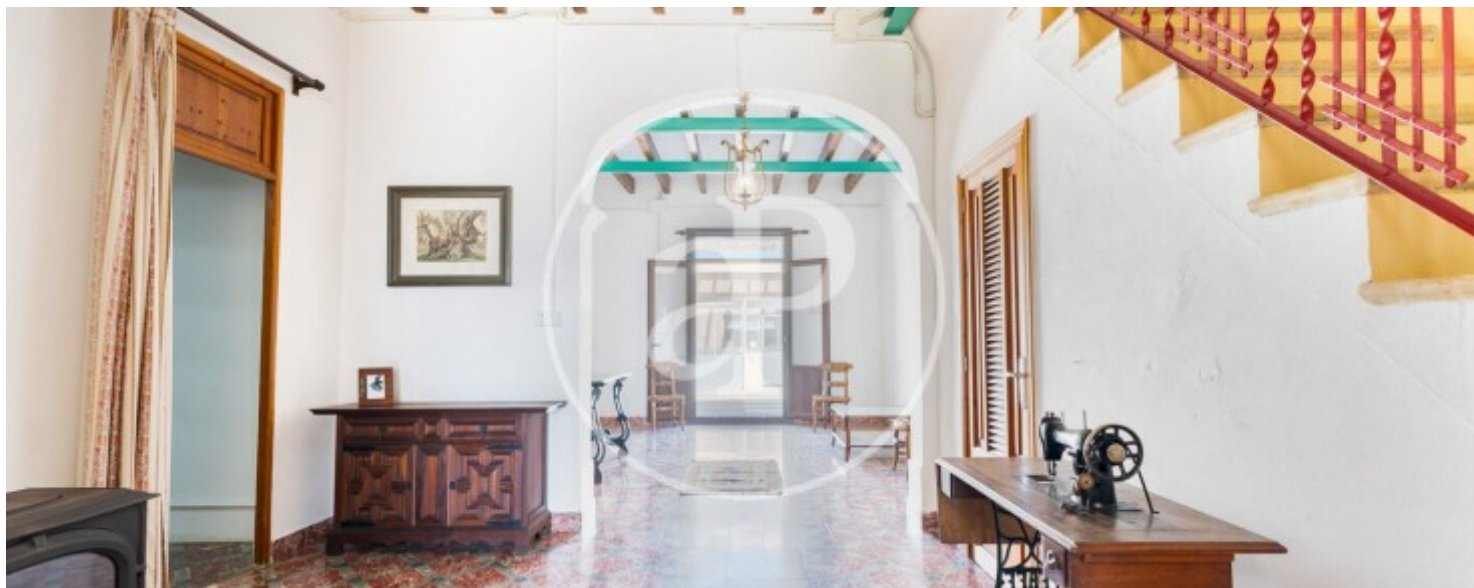
Located in the heart of Mallorca, in Vilafranca de Bonany stands this house built in 1920, a home that preserves intact the soul of the island's traditional houses and offers endless possibilities to turn it into a unique home or a charming project. Its original hydraulic tile floors, northern wood beams, and high ceilings speak of another era, while its spacious rooms and open garden invite you to dream of a lively home or a project with its own character. With a built area of 292 m², the house is distributed over two floors plus a versatile outdoor space of 140 m². On the ground floor, there are two bedrooms, a full bathroom, an independent kitchen, dining room, and two large living rooms with fireplaces—perfect for enjoying the warmth of the fire in winter. From here, there is

direct access to the 20 m² garage and to the outdoor area, undoubtedly one of the property's greatest attractions: a spacious private space to relax, host family gatherings, or cultivate, complemented by a traditional wood-fired oven, built-in barbecue, and a versatile area with potential to create an independent studio or even a guest house. In addition, the land offers enough space to build a swimming pool and design a tailor-made oasis. The upper floor houses three bedrooms and a bright living room that connects to a 20 m² terrace with panoramic countryside views. This...

Contact us,
we will be happy to assist you,
to offer you more details and information.

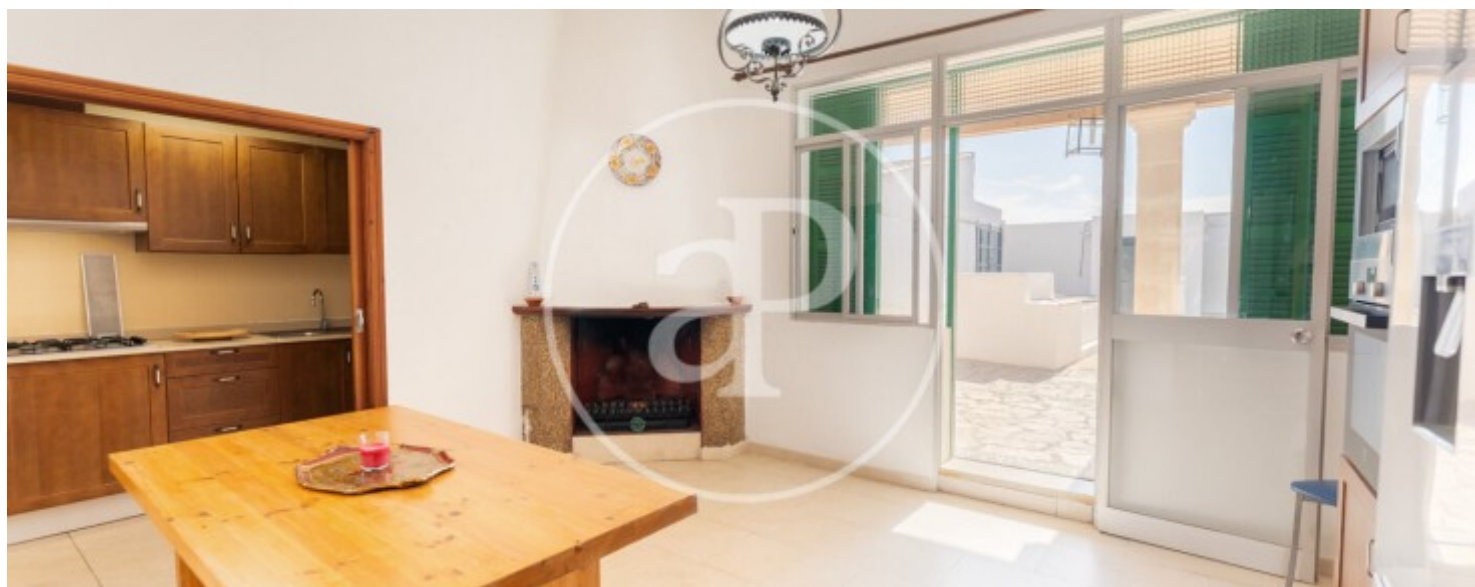
Sant Joan

REF. VPM2509008



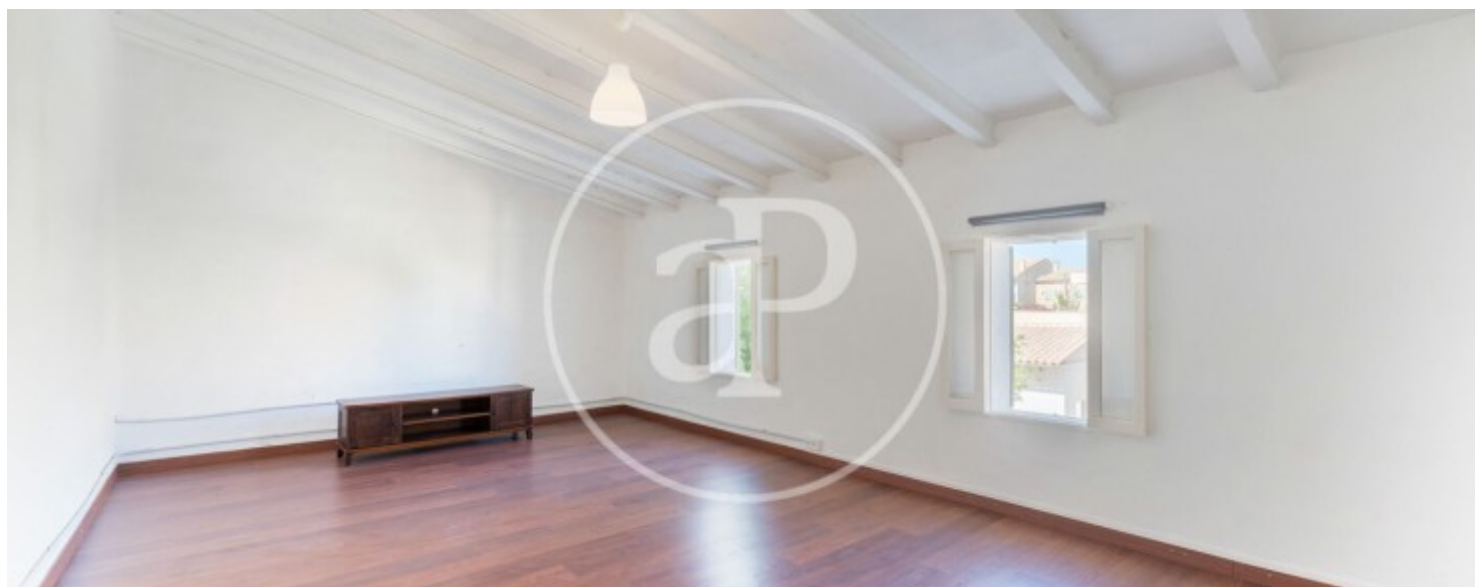
Sant Joan

REF. VPM2509008



Sant Joan

REF. VPM2509008



Sant Joan

REF. VPM2509008



The information about any property is not binding to any offer or contract. Any verbal or written declaration made by aProperties with regards to the value or condition of the property should not be considered accurate or factual. The pictures make reference to some parts of the property at the times that they were taken. The areas, dimensions and distances that are given are approximate and should be checked by the client. The images are computer generated and are just an approximate indication of the real appearance of the property; these may change at any time. The information with regards to the property may also change at any time.

For **more information** or
to make an appointment

apropertiespalma@aproperties.es
Tel: 871 16 01 60
www.aproperties.es