

Eixample, Valencia

REF. VV2502021

Flat for Sale in Pla del Remei

Features

- ✓ Heating
- ✓ Terrace
- ✓ Concierge
- ✓ AACC
- ✓ Lift

Surface
290 m²

Bedrooms
3

Bathrooms
3

Price
1,100,000 €



aProperties presents this exclusive luxury flat for rent in the city centre, with stunning views of one of the most iconic spots in Valencia: Xàtiva street, on the corner with Colón street.

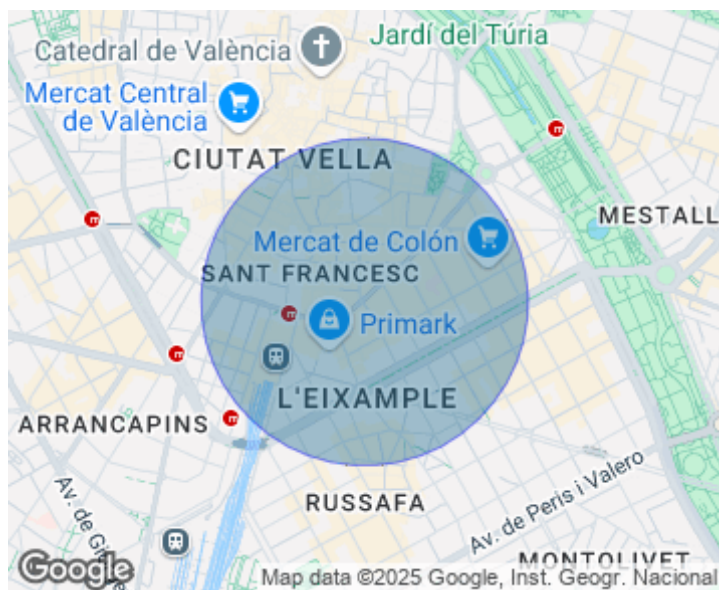
It is a property with 3 bedrooms and complete bathrooms, a large living-dining room, a fully equipped kitchen, a small terrace with spectacular views and a large and completely private interior courtyard. At the entrance of the property we find a fourth room, strategically located to be used as an office, telecommuting room or as a fourth bedroom, depending on the needs of the tenant. Next, there is the impressive kitchen and the large living-dining room, which gives

access to the impressive private interior courtyard, which, in Roman style, wraps around the entire house, giving it a unique feature. This courtyard is exclusively accessible from the house, making it a perfect space for large gatherings. The living-dining room, one of the main rooms of the house, is a large space divided into two areas, one of them with access to the terrace with spectacular views. Next, we come to the area where the main bedrooms are located, all of them with large wardrobes and complete bathrooms. The kitchen, a fundamental piece of this property due to its large size...

Contact us,
we will be happy to assist you,
to offer you more details and information.

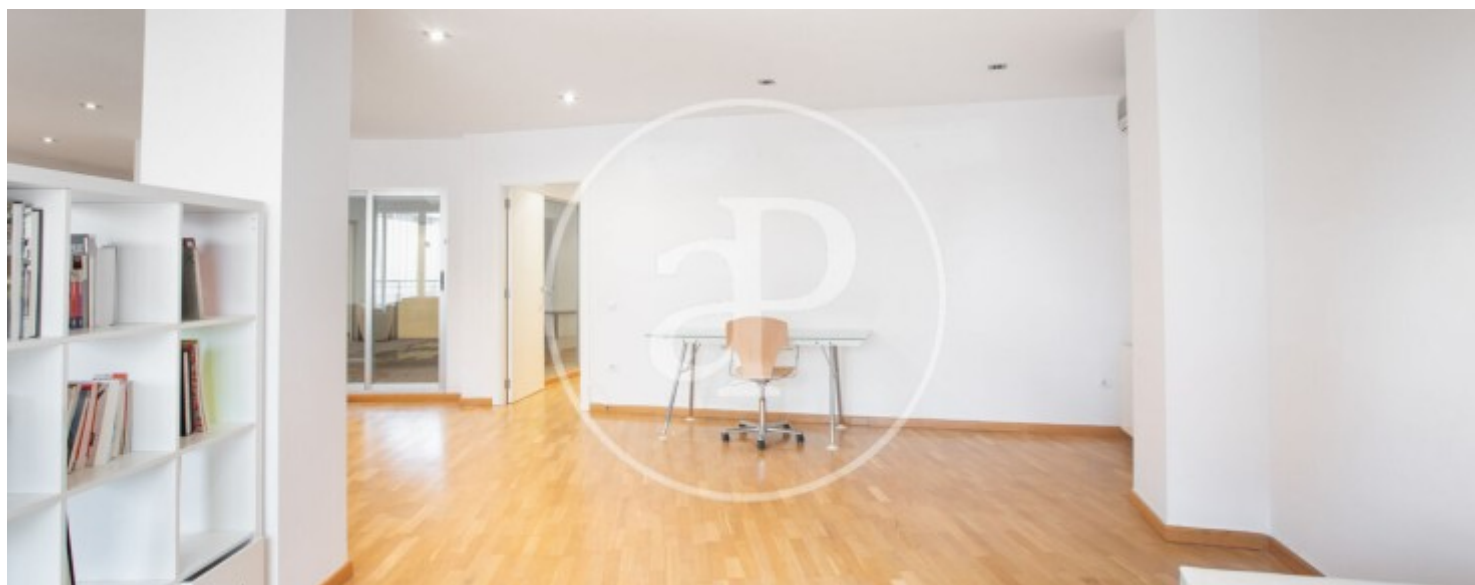
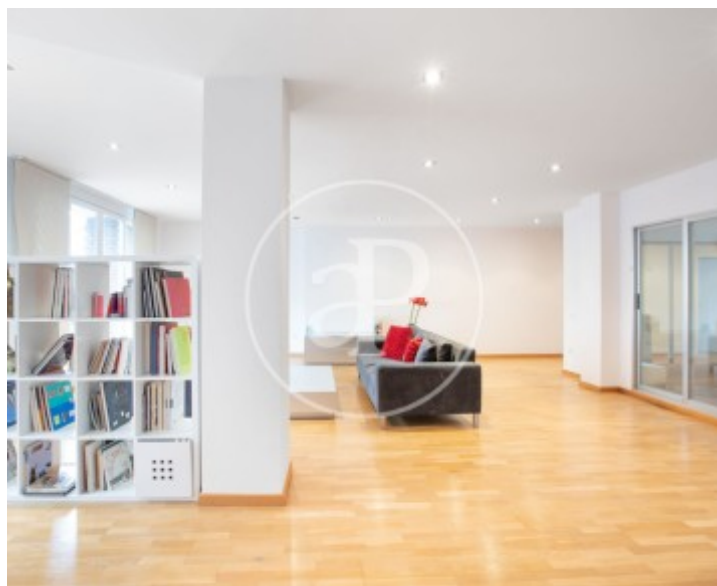
Eixample, Valencia

REF. VV2502021



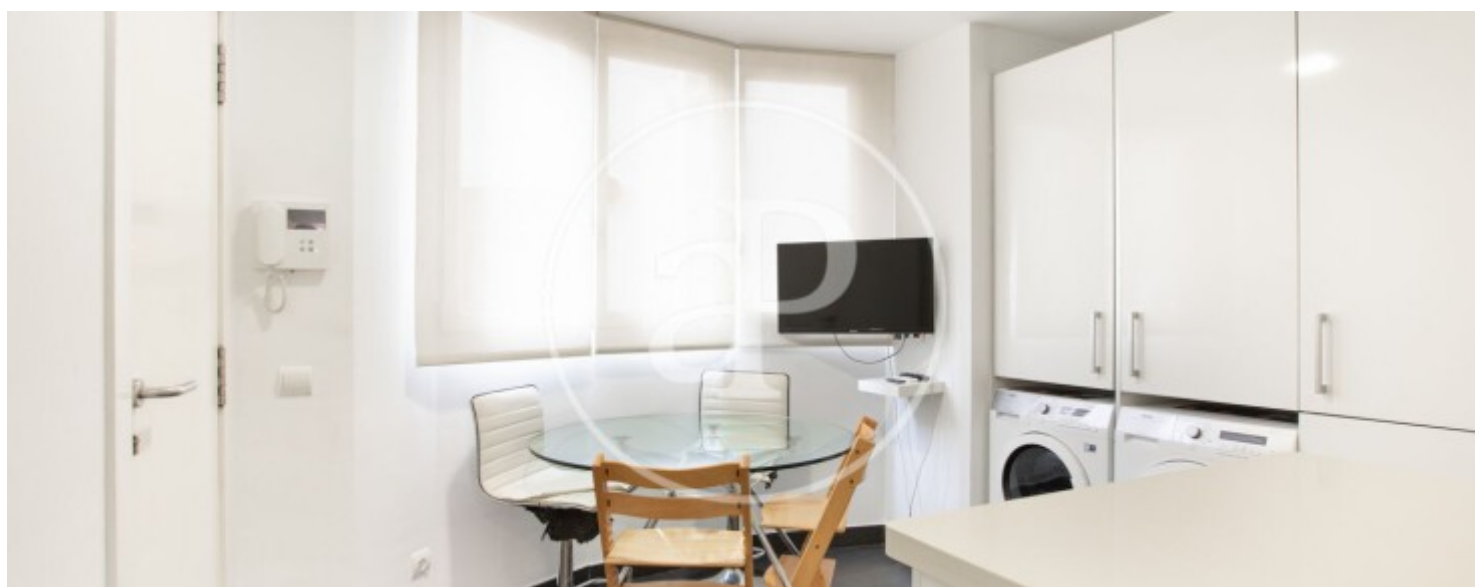
Eixample, Valencia

REF. VV2502021



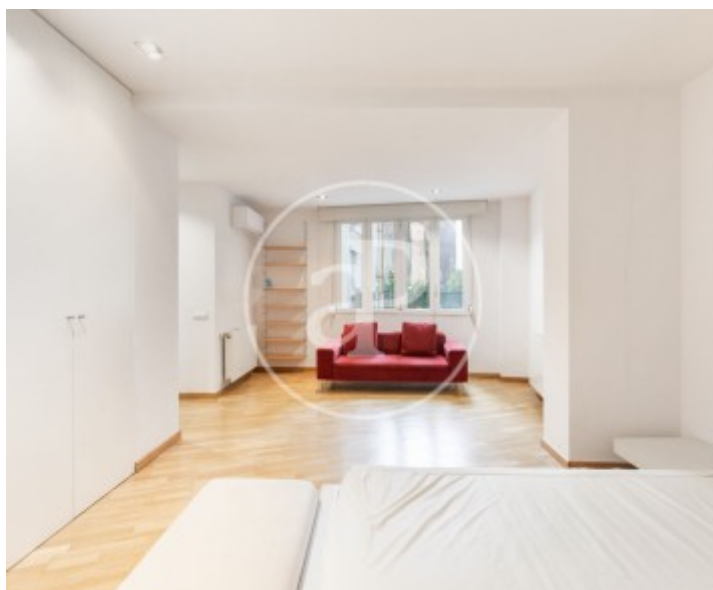
Eixample, Valencia

REF. VV2502021



Eixample, Valencia

REF. VV2502021



The information about any property is not binding to any offer or contract. Any verbal or written declaration made by aProperties with regards to the value or condition of the property should not be considered accurate or factual. The pictures make reference to some parts of the property at the times that they were taken. The areas, dimensions and distances that are given are approximate and should be checked by the client. The images are computer generated and are just an approximate indication of the real appearance of the property; these may change at any time. The information with regards to the property may also change at any time.

For **more information** or
to make an appointment

apropertiesvalencia@aproperties.es
Tel: 96 128 59 65
www.aproperties.es