

Volpelleres, Sant Cugat del Vallès

REF. ASC2305011



## Flat with terrace and south facing, Volpelleres

### Features

- ✓ Views
- ✓ AACC
- ✓ Backyard
- ✓ Lift
- ✓ Has parking
- ✓ Heating
- ✓ Terrace
- ✓ Pool
- ✓ Concierge

Price

**1,800 €**

Surface

**92 m<sup>2</sup>**

Bedrooms

**3**

Bathrooms

**2**



### Availability July 2023.

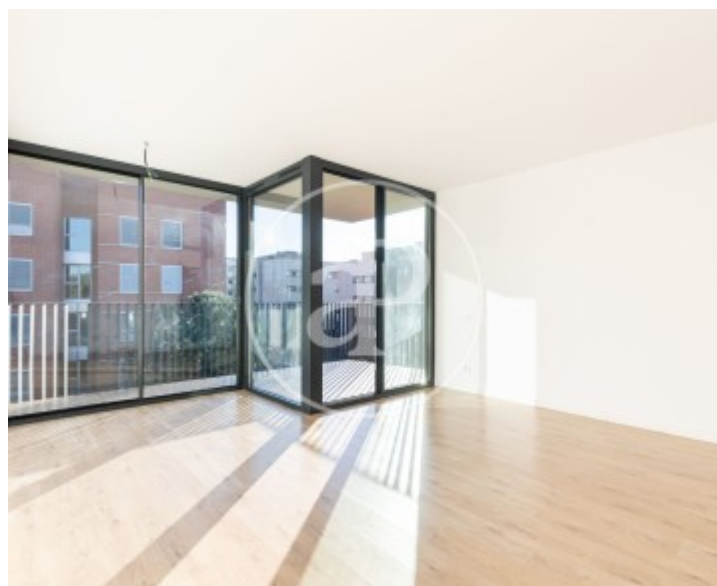
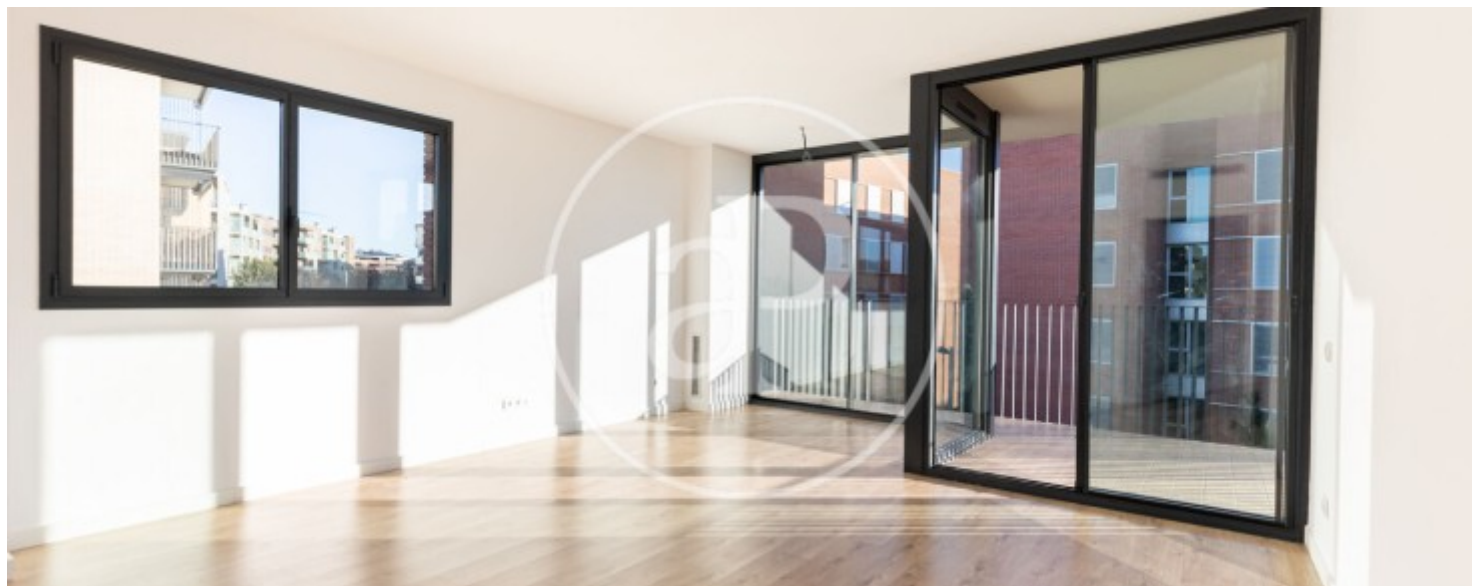
This fantastic flat gives way, through its large entrance hall, to a spacious living-dining room almost completely glazed and with direct access to the south-facing terrace. This makes it particularly bright and comfortable. The kitchen is spacious and comfortably distributed. In the night area, we have two bedrooms and a complete bathroom with bathtub, plus a suite with private bathroom with shower. All the materials and finishes are top quality. The entire property is air-conditioned by means of a low energy consumption aerothermal system, which is used both to heat and cool the whole house and to heat the water. It has high resistance

parquet flooring, double glazed aluminium carpentry and video intercom. It also includes a parking space and fantastic communal area with swimming pool and green areas. This unique community in the area has a concierge service practically all day long.

**Contact us,**  
we will be happy to assist you,  
to offer you more details and information.

Volpelleres, Sant Cugat del Vallès

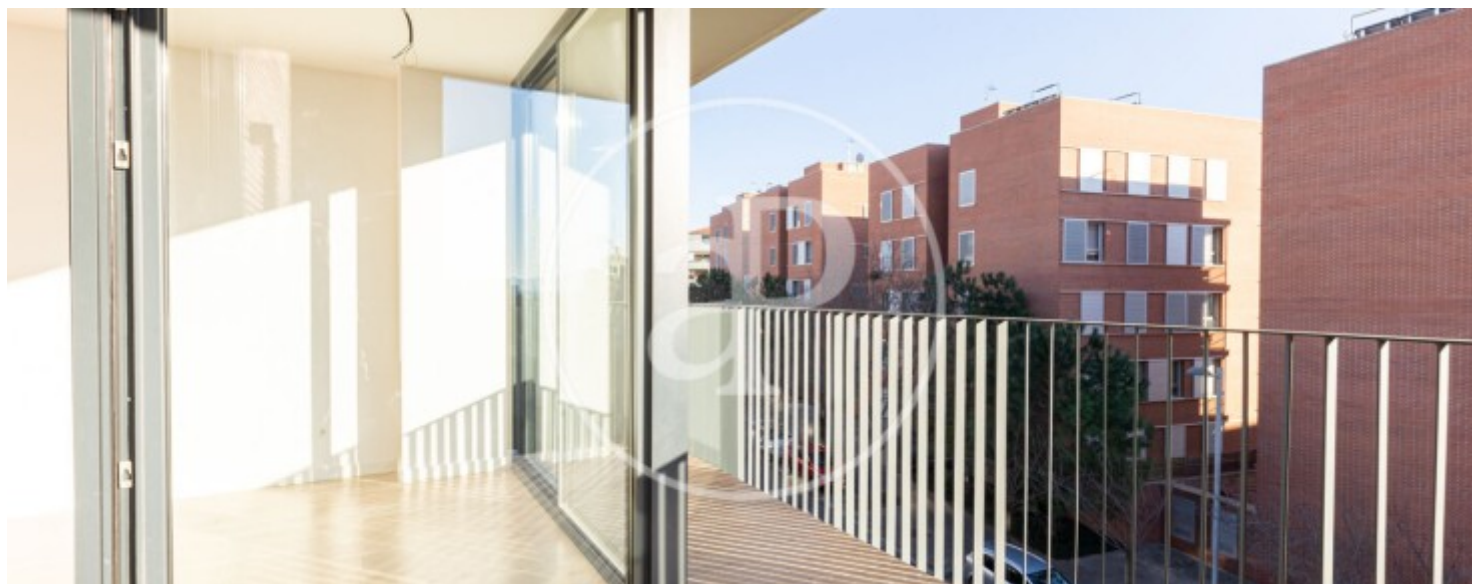
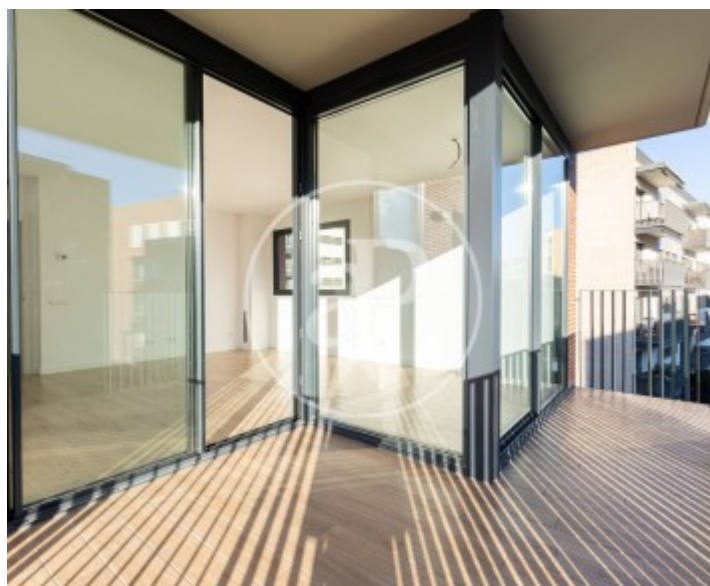
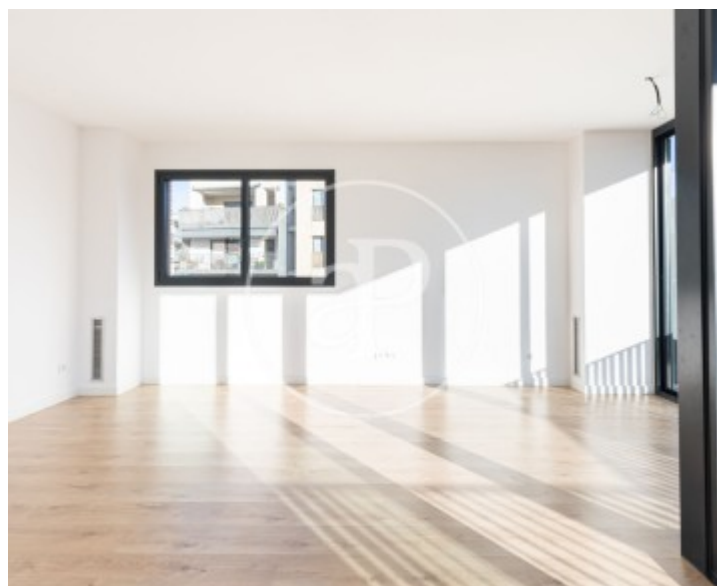
REF. ASC2305011





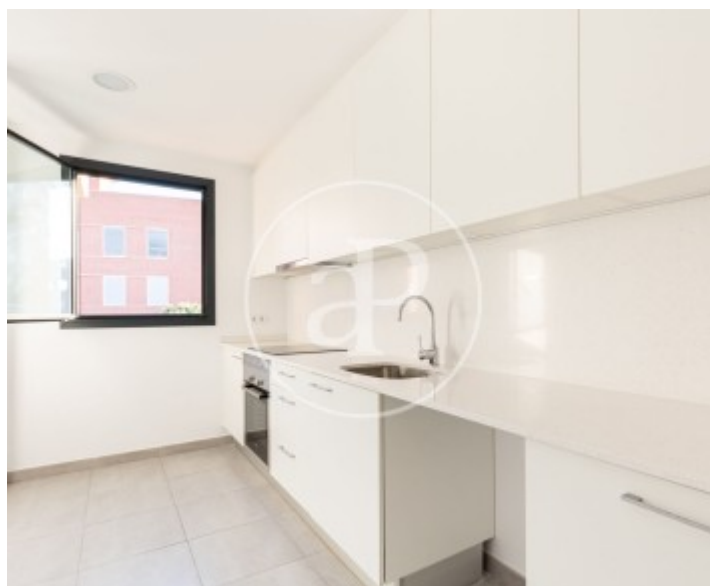
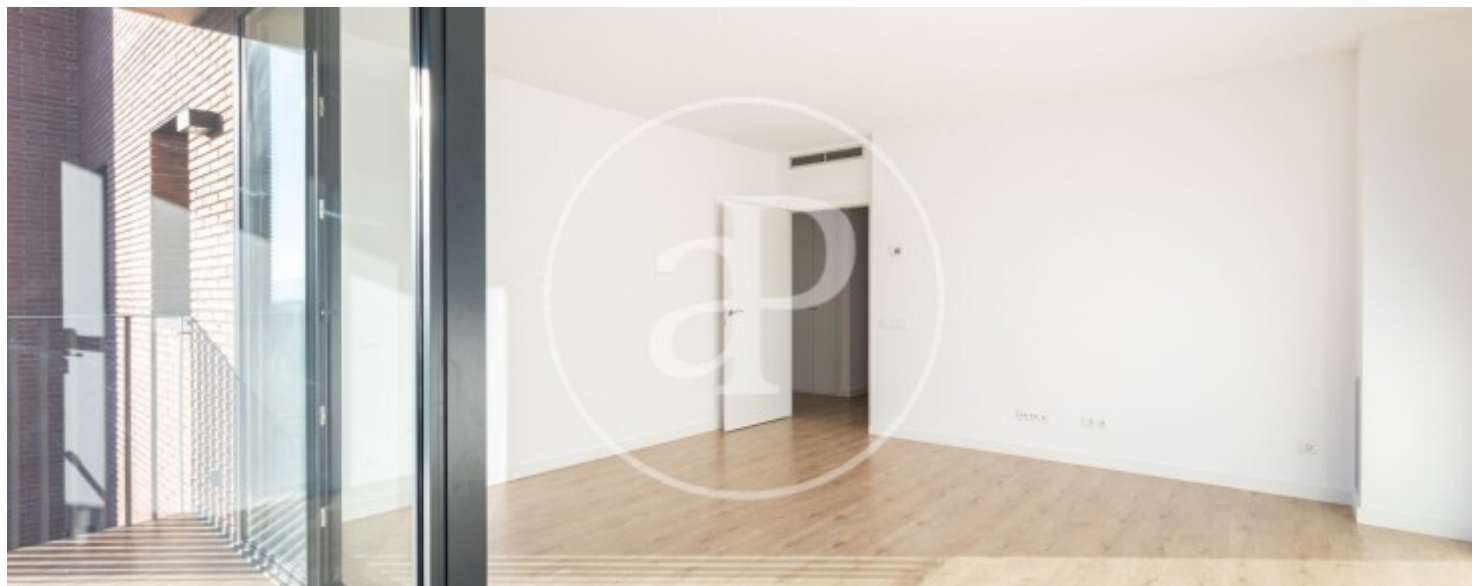
Volpelleres, Sant Cugat del Vallès

REF. ASC2305011



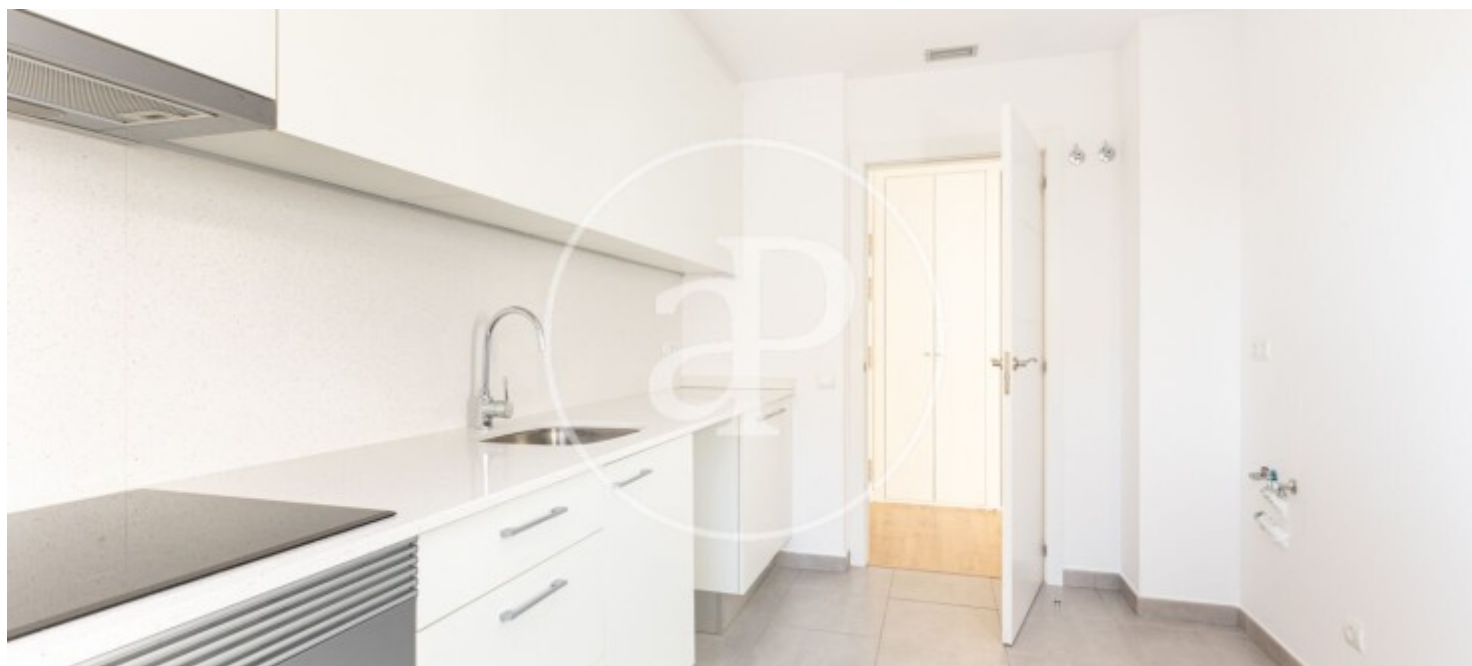
Volpelleres, Sant Cugat del Vallès

REF. ASC2305011



Volpelleres, Sant Cugat del Vallès

REF. ASC2305011



The information about any property is not binding to any offer or contract. Any verbal or written declaration made by aProperties with regards to the value or condition of the property should not be considered accurate or factual. The pictures make reference to some parts of the property at the times that they were taken. The areas, dimensions and distances that are given are approximate and should be checked by the client. The images are computer generated and are just an approximate indication of the real appearance of the property; these may change at any time. The information with regards to the property may also change at any time.



For **more information** or  
to make an appointment

[apropertiesbarcelona@aproperties.es](mailto:apropertiesbarcelona@aproperties.es)  
Tel: 93 528 89 08  
[www.aproperties.es](http://www.aproperties.es)