

Coll Favà - Can Magí, Sant Cugat del Vallès

REF. ASC1911015



Apartment for rent in Coll Favà, Sant Cugat del Vallès

Features

- ✓ AACC
- ✓ Terrace
- ✓ Backyard
- ✓ Pool
- ✓ Lift

Price

1,200 €

Surface

95 m²

Bedrooms

3

Bathrooms

2



Practical apartment located near all services such as FGC or Renfe.

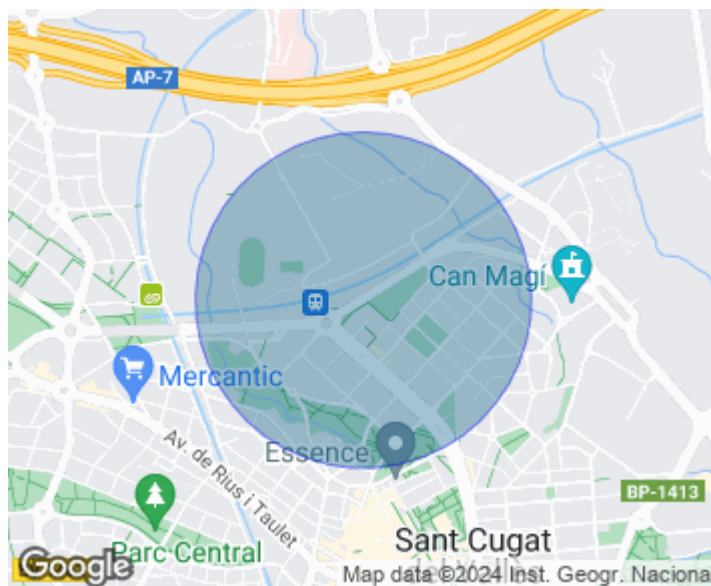
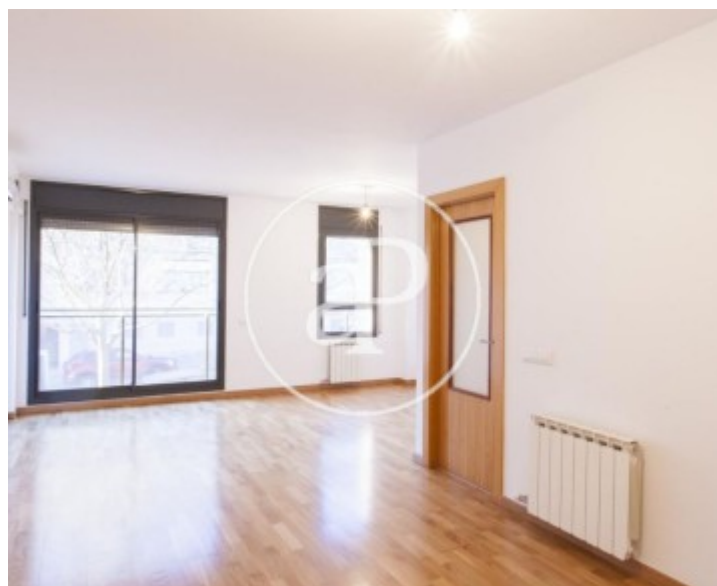
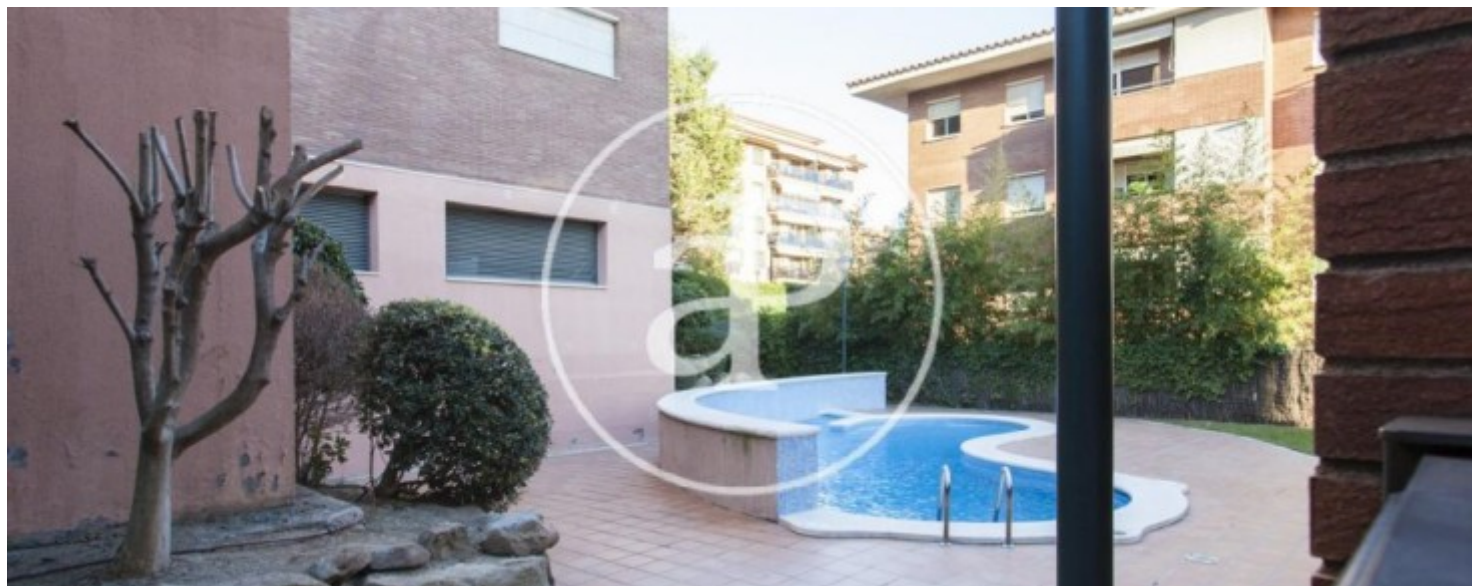
It has an area of 95m² distributed in a living room of 25sqm, a kitchen with independent water area, three bedrooms, one of them en suite, and two bathrooms. The farm has a communal pool. The property is freshly painted and the parquet freshly polished. It does not have parking. Sant Cugat del Vallès, located in the Western Valleys, is a town near Barcelona that preserves the essence of a quiet town but only 12 km from the city. It is chosen by many families who want to gain in quality of life due to its strategic location, large number of green areas, parks and gardens and excellent

communication by highway, Vallvidrera Tunnels or road with the Catalan capital. Most of the families have their habitual residence here and work in Barcelona, enjoying the advantages of living in a municipality that maintains traditions, wide cultural and gastronomic offer, popular festivals and at the same time enjoys prestigious international schools and universities. Available January 2020.

Contact us,
we will be happy to assist you,
to offer you more details and information.

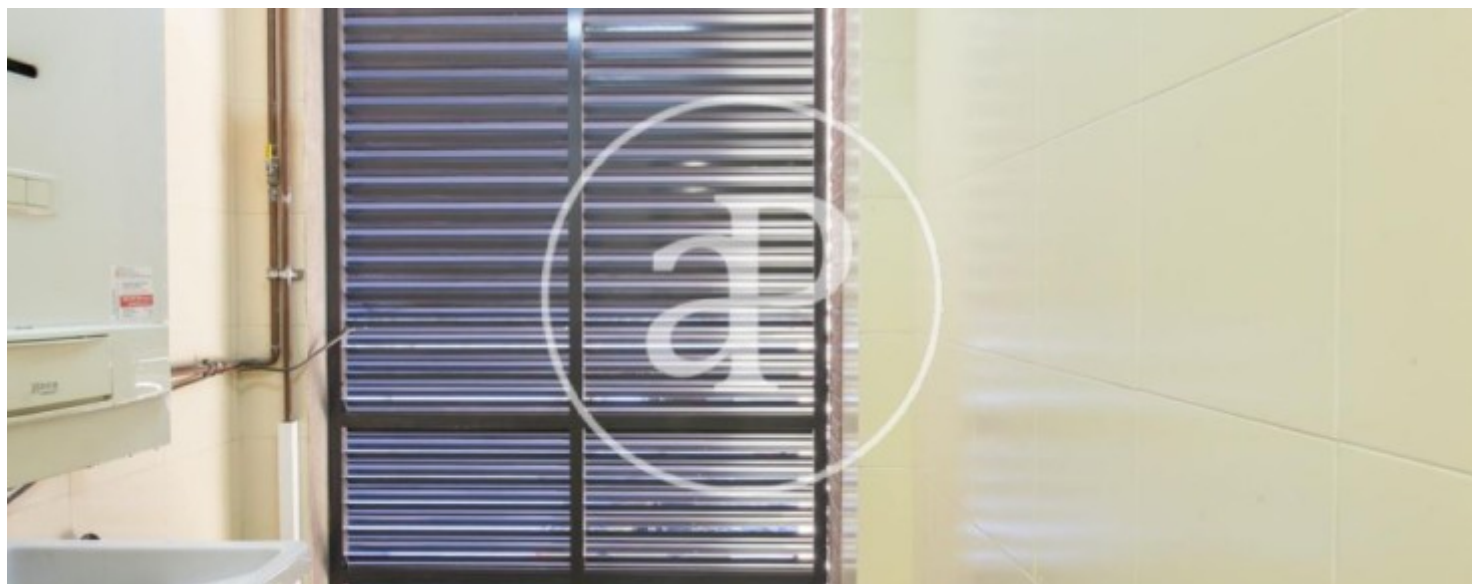
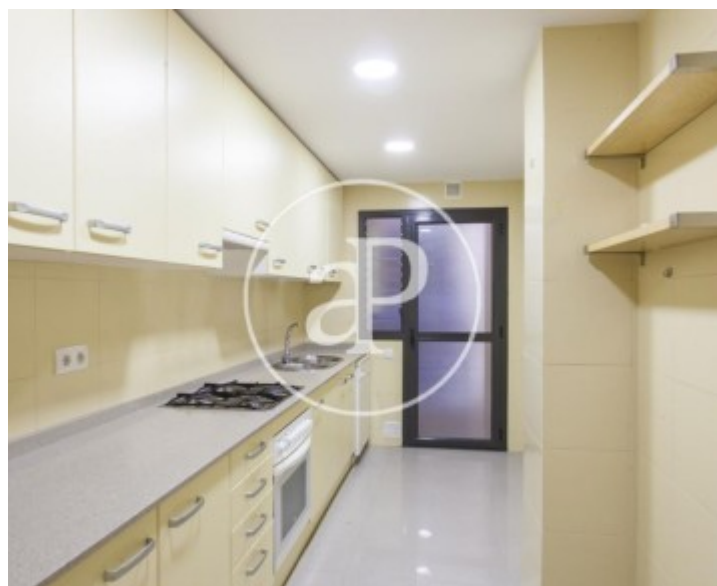
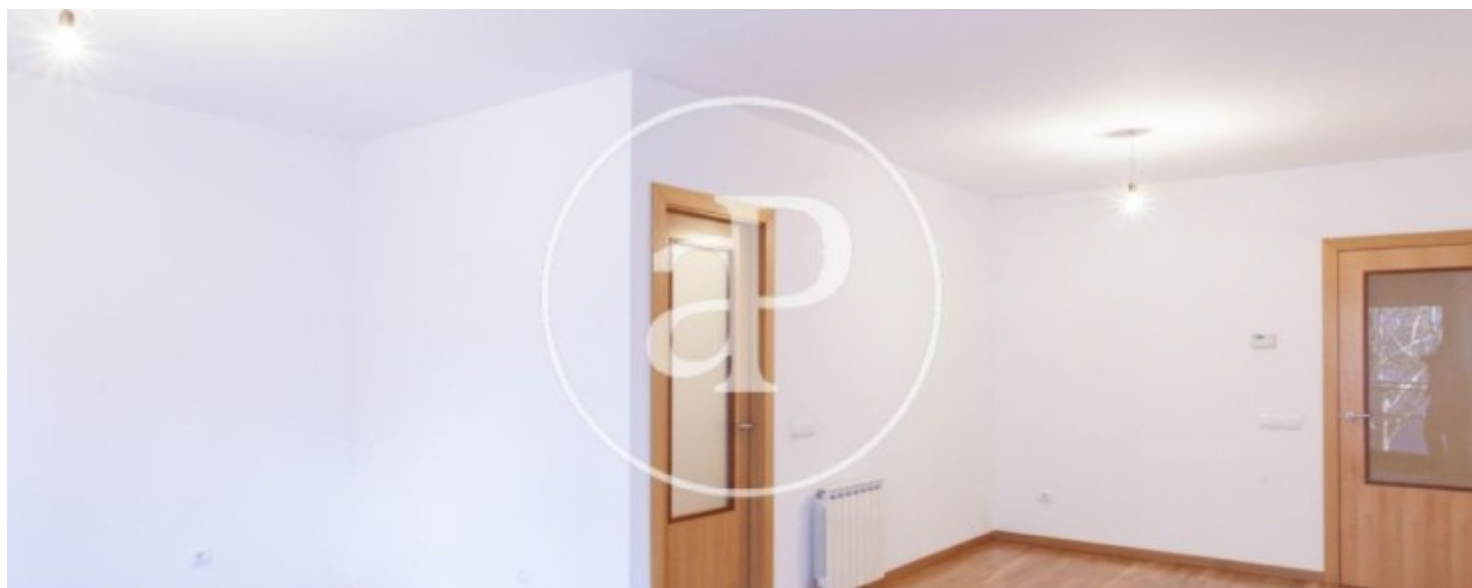
Coll Favà - Can Magí, Sant Cugat del Vallès

REF. ASC1911015



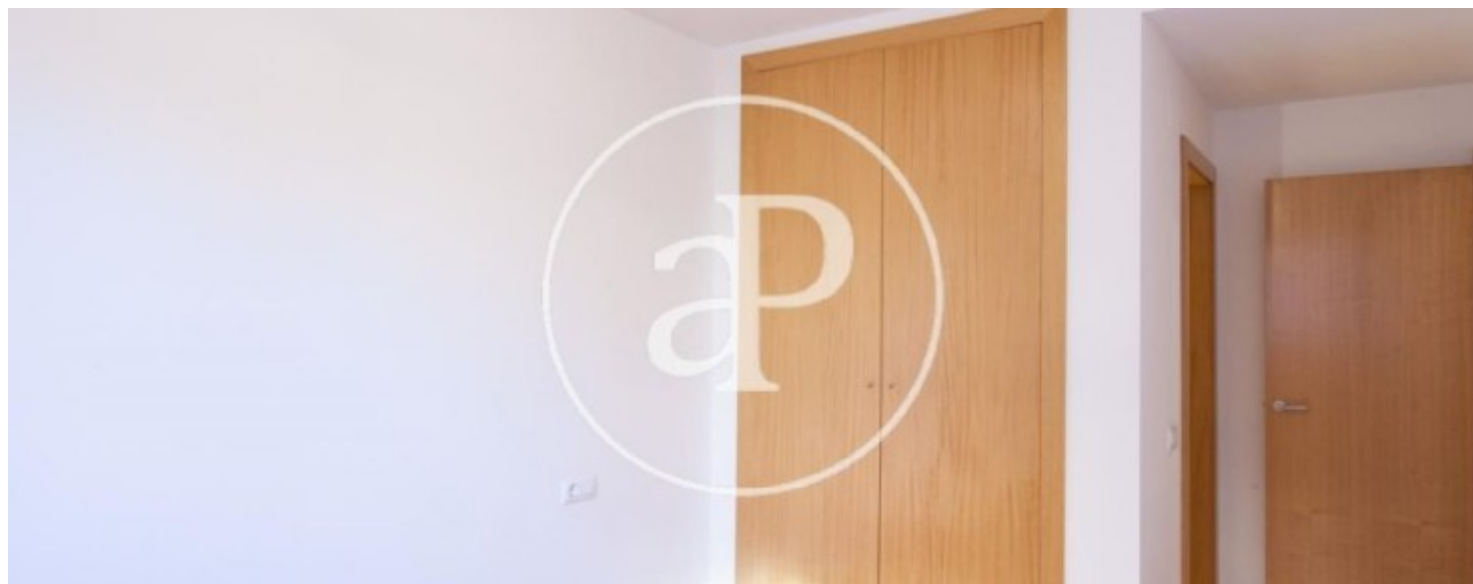
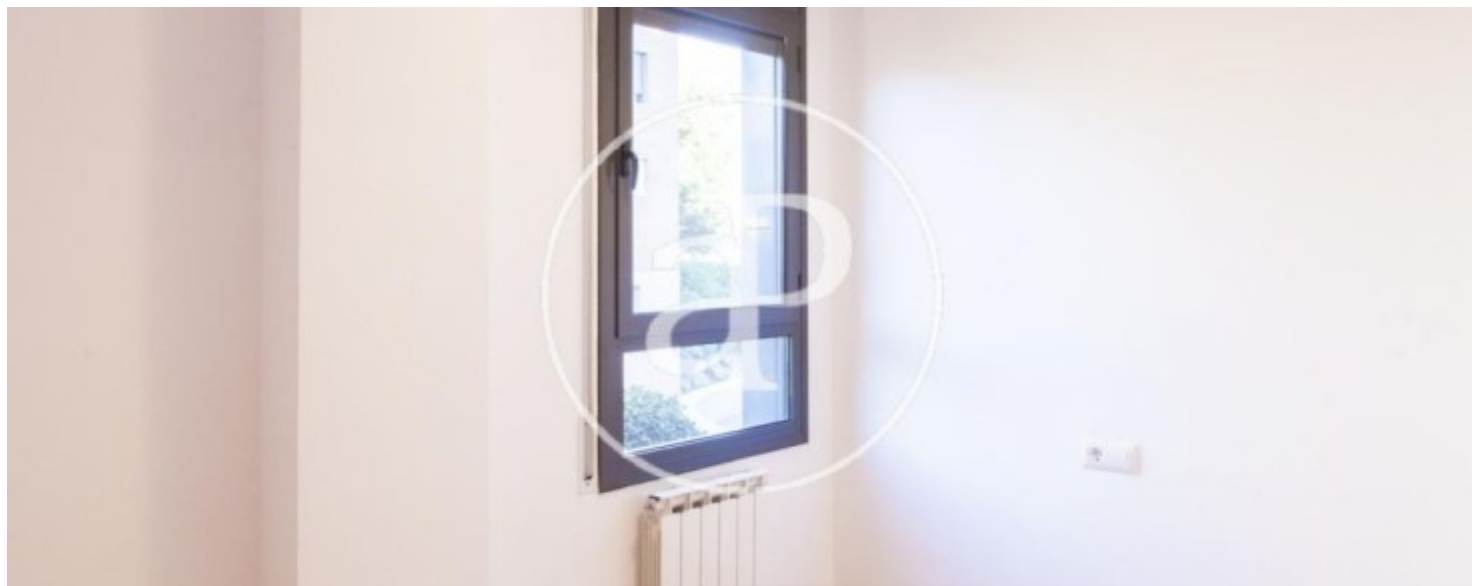
Coll Favà - Can Magí, Sant Cugat del Vallès

REF. ASC1911015



Coll Favà - Can Magí, Sant Cugat del Vallès

REF. ASC1911015



Coll Favà - Can Magí, Sant Cugat del Vallès

REF. ASC1911015



The information about any property is not binding to any offer or contract. Any verbal or written declaration made by aProperties with regards to the value or condition of the property should not be considered accurate or factual. The pictures make reference to some parts of the property at the times that they were taken. The areas, dimensions and distances that are given are approximate and should be checked by the client. The images are computer generated and are just an approximate indication of the real appearance of the property; these may change at any time. The information with regards to the property may also change at any time.



For **more information** or
to make an appointment

apropertiesbarcelona@aproperties.es
Tel: 93 528 89 08
www.aproperties.es