

Coll Favà - Can Magí, Sant Cugat del Vallès

REF. ASC2502004

# Penthouse for rent in Coll Favà

## Features

- ✓ Views
- ✓ Boxroom
- ✓ Terrace
- ✓ Pool
- ✓ Has parking
- ✓ Heating
- ✓ AACC
- ✓ Backyard
- ✓ Lift

Surface

**121 m<sup>2</sup>**

Bedrooms

**4**

Bathrooms

**2**



Price

**1,600 €**

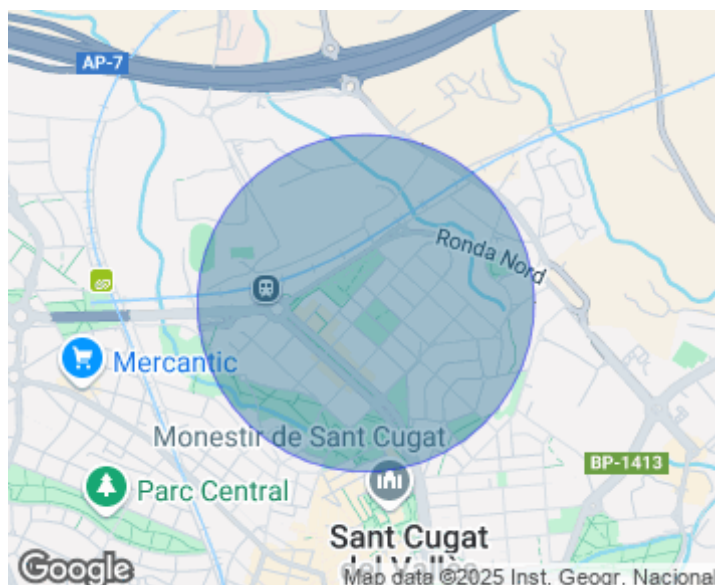
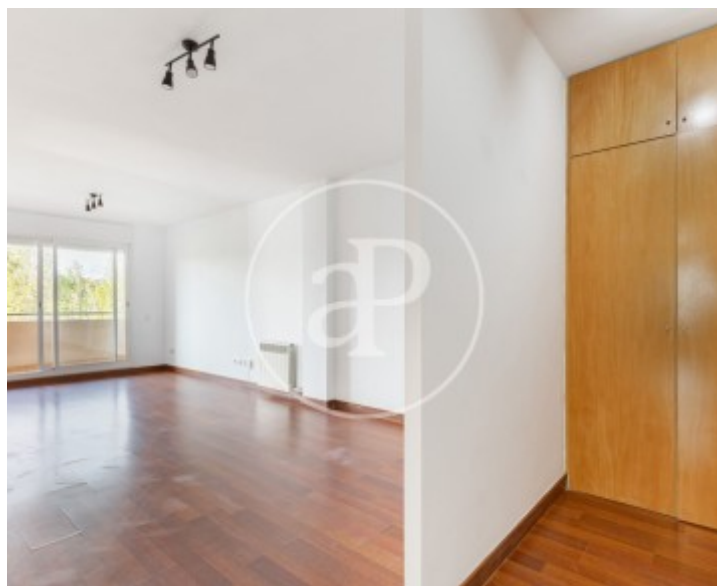
This 121m<sup>2</sup> penthouse with a spacious terrace is located in the prestigious Coll Favà-Can Magí neighborhood, close to all kinds of services, shops, gyms, and restaurants, with public transport easily accessible. In the day area, you'll find a beautiful living-dining room with direct access to the terrace offering stunning park views, as well as a large office-style kitchen with direct access to an independent laundry area. In the night area, there are four exterior-facing bedrooms. The master suite has its own full bathroom, and an additional full bathroom serves the remaining bedrooms. The apartment includes a large parking space in the same building, as well as a storage room with an electrical outlet. High-quality finishes include parquet flooring, aluminum interior carpentry,

double-glazed exterior windows, and air conditioning. Located in a privileged and exclusive area of Coll Favà, this home offers excellent connections to the main roads and easy access to Barcelona and surrounding areas. The Coll Favà neighborhood is known for its peaceful residential atmosphere and its proximity to various services, shops, and medical centers. Contact the expert team at aProperties Real Estate to find your new home!\* In compliance with Law 12/2023 and Law 18/2007, we inform that Index of R.P.LL: 17,00 € / m<sup>2</sup> State reference price 1.542,00 €

**Contact us,**  
we will be happy to assist you,  
to offer you more details and information.

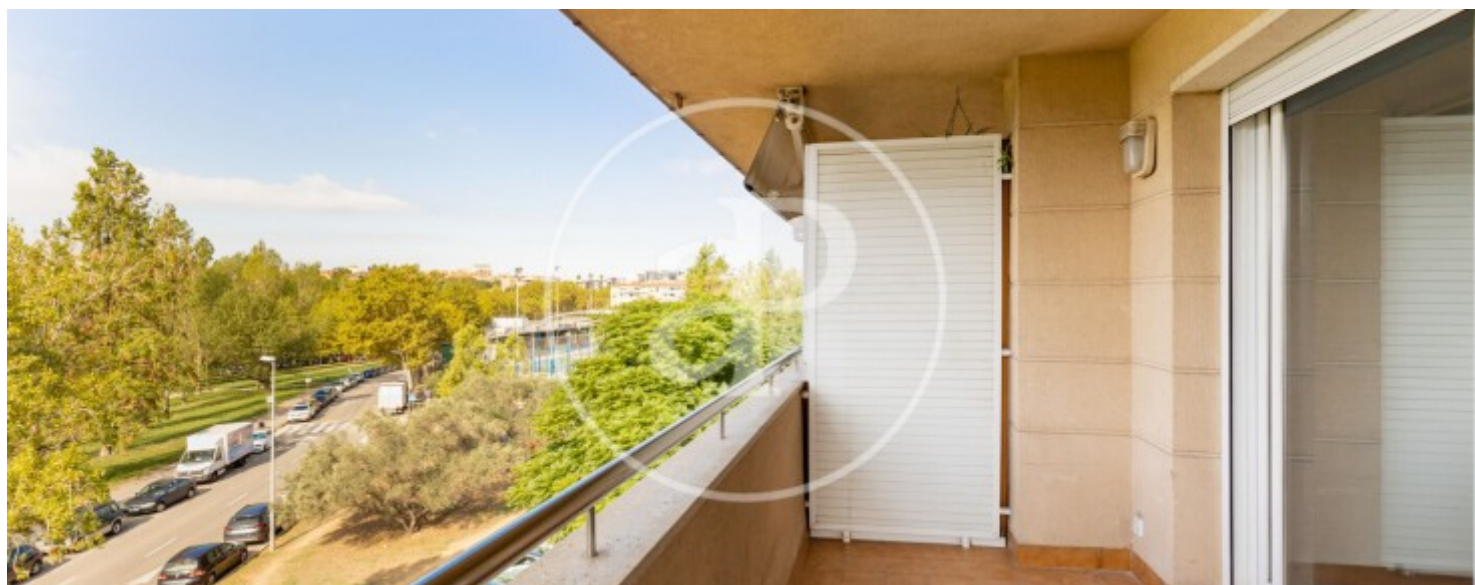
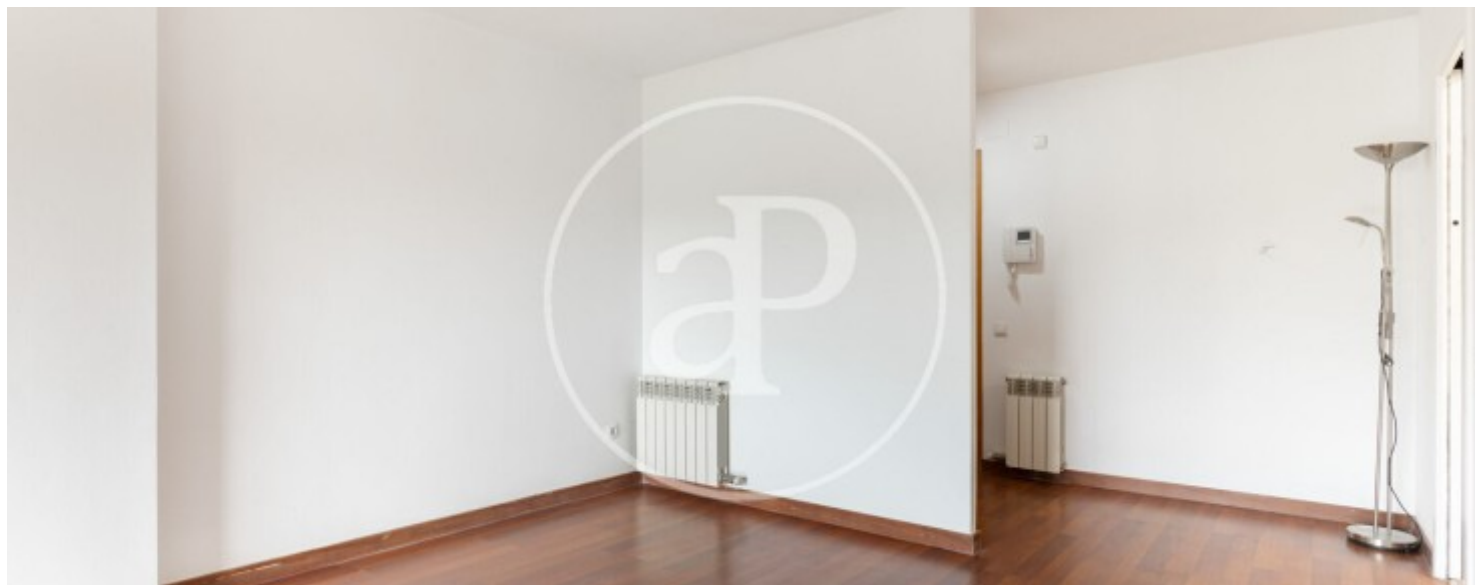
Coll Favà - Can Magí, Sant Cugat del Vallès

REF. ASC2502004



Coll Favà - Can Magí, Sant Cugat del Vallès

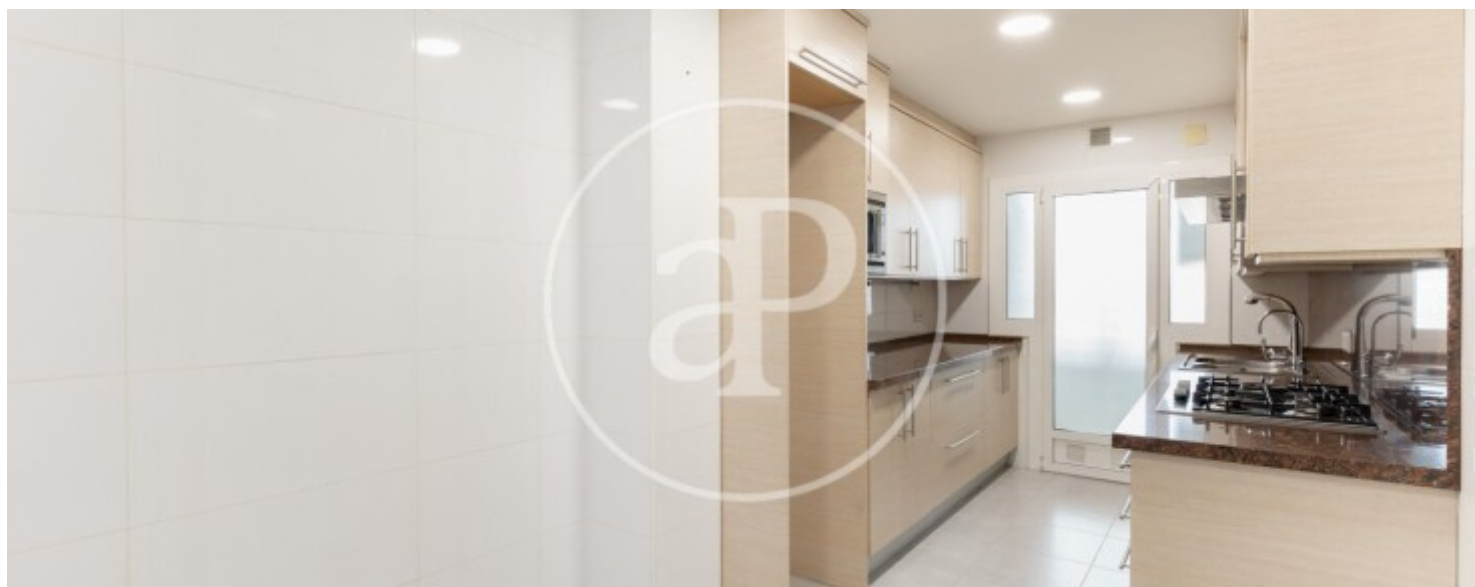
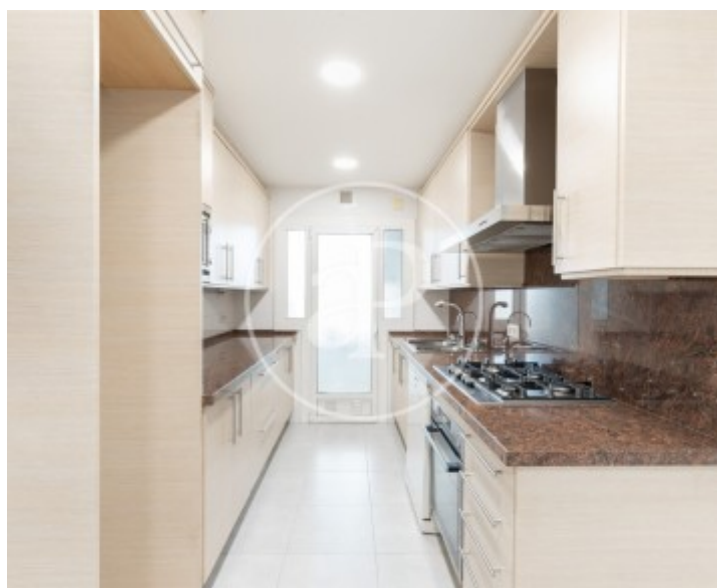
REF. ASC2502004





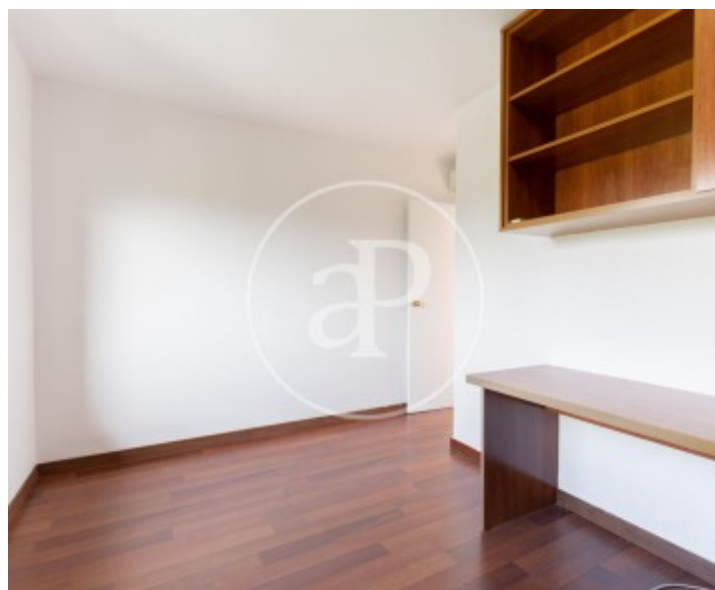
Coll Favà - Can Magí, Sant Cugat del Vallès

REF. ASC2502004



Coll Favà - Can Magí, Sant Cugat del Vallès

REF. ASC2502004



The information about any property is not binding to any offer or contract. Any verbal or written declaration made by aProperties with regards to the value or condition of the property should not be considered accurate or factual. The pictures make reference to some parts of the property at the times that they were taken. The areas, dimensions and distances that are given are approximate and should be checked by the client. The images are computer generated and are just an approximate indication of the real appearance of the property; these may change at any time. The information with regards to the property may also change at any time.

For **more information** or  
to make an appointment

[apropertiesbarcelona@aproperties.es](mailto:apropertiesbarcelona@aproperties.es)  
Tel: 93 528 89 08  
[www.aproperties.es](http://www.aproperties.es)