



Vega de la Moraleja, San Sebastián de los Reyes

REF. VMN2512012

Exclusive penthouse for sale with Terrace in Vega de la Moraleja (San Sebastián de los Reyes)

Features

- ✓ Heating
- ✓ Terrace
- ✓ Concierge
- ✓ AACC
- ✓ Lift
- ✓ Has parking

Surface

126 m²

Bedrooms

2

Bathrooms

2

Price

720,000 €



Aproperties presents this exclusive duplex penthouse located in Arroyo de la Vega.

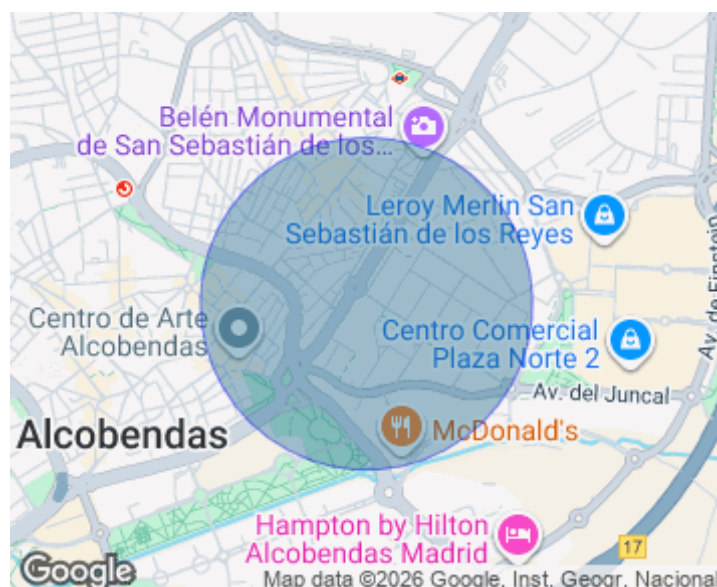
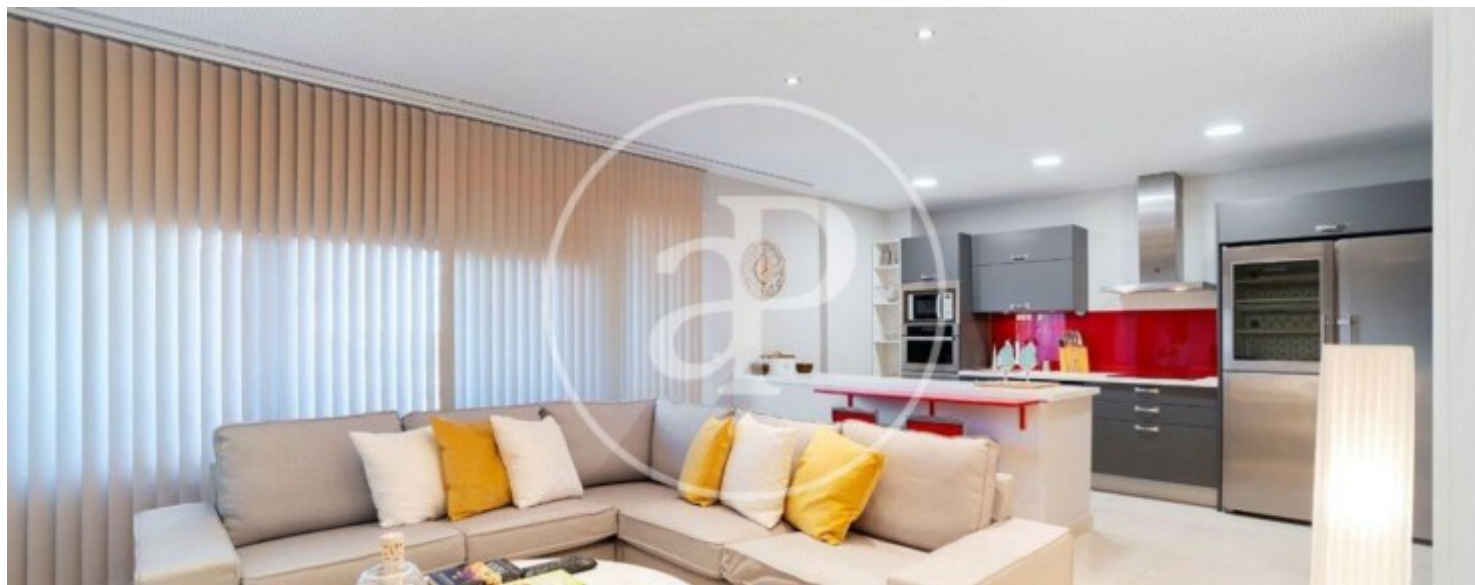
It comprises 174 square meters, of which 100 square meters are usable living space and 74 square meters are terrace. On the first floor, we find a spacious living-dining room and a modern, functional, integrated kitchen, equipped with all appliances, as well as large windows that flood the space with natural light. The entrance hall features a large coat closet and a full bathroom with a shower. The living room provides access to a hallway terrace. On the second floor, there is a wonderful hallway that can be used as a sitting area or a workspace. It comprises two bedrooms: the master

bedroom with ample built-in wardrobes, and a second bedroom with a fantastic walk-in closet. A full bathroom with a shower can be shared by both bedrooms. On this second floor, both the master bedroom and the hallway have access through large windows that flood the space with light and offer a perfect connection to the outdoors, leading to a magnificent 74-square-meter terrace with stunning views and complete privacy. It also features ducted heating and cooling with independent thermostats upstairs and downstairs. A concierge and two parking spaces are included in the price. It's important...

Contact us,
we will be happy to assist you,
to offer you more details and information.

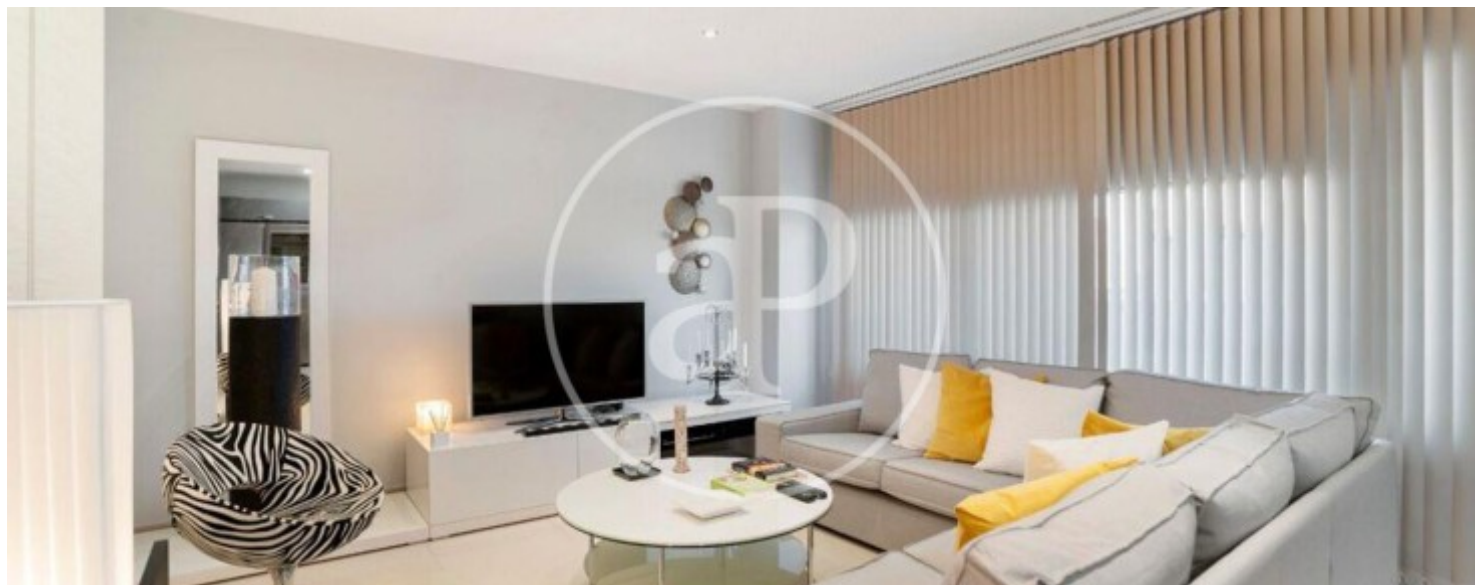
Vega de la Moraleja, San Sebastián de los Reyes

REF. VMN2512012



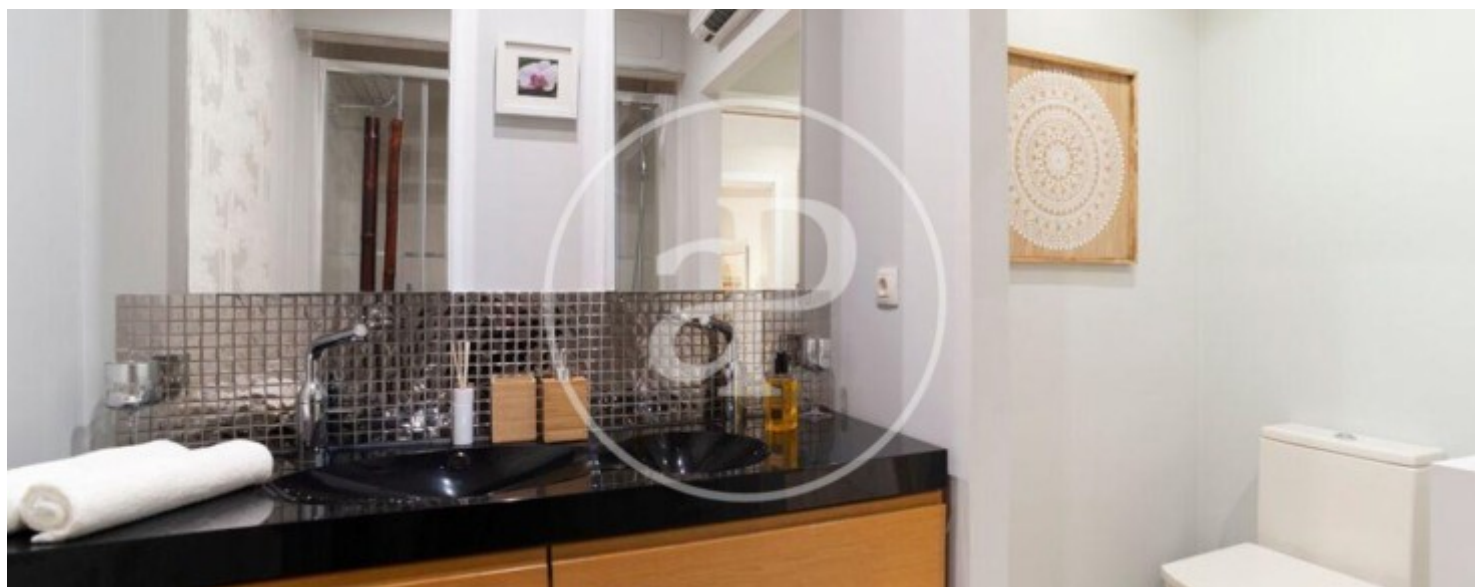
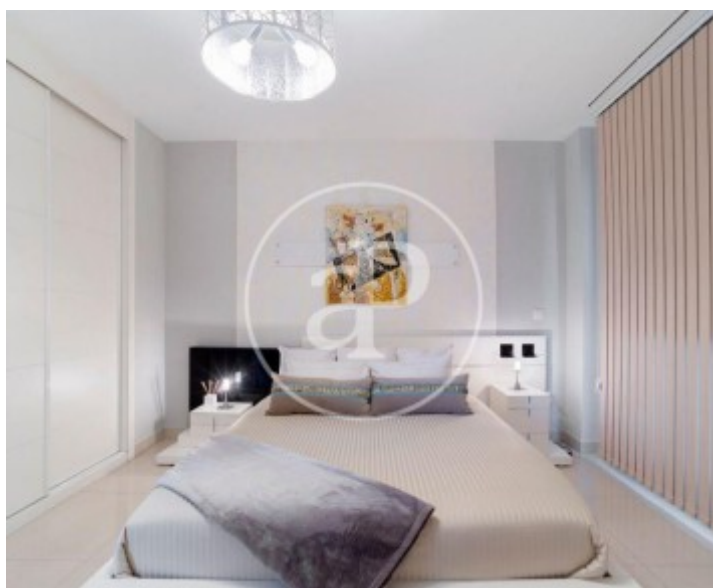
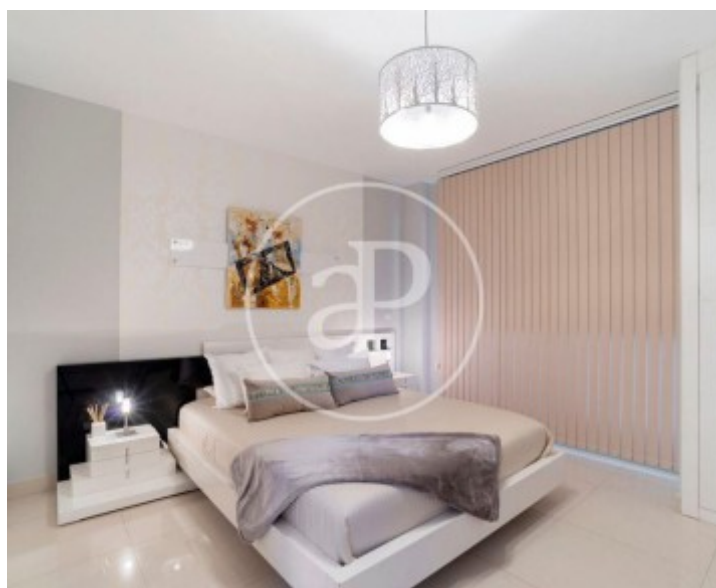
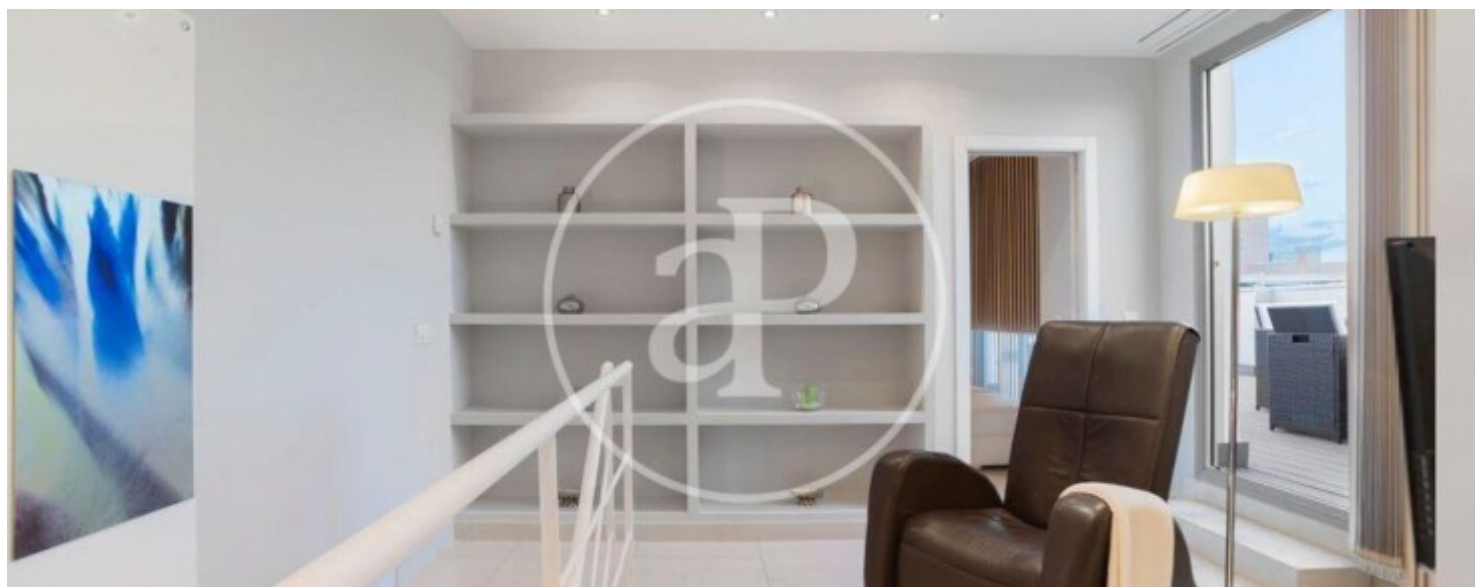
Vega de la Moraleja, San Sebastián de los Reyes

REF. VMN2512012



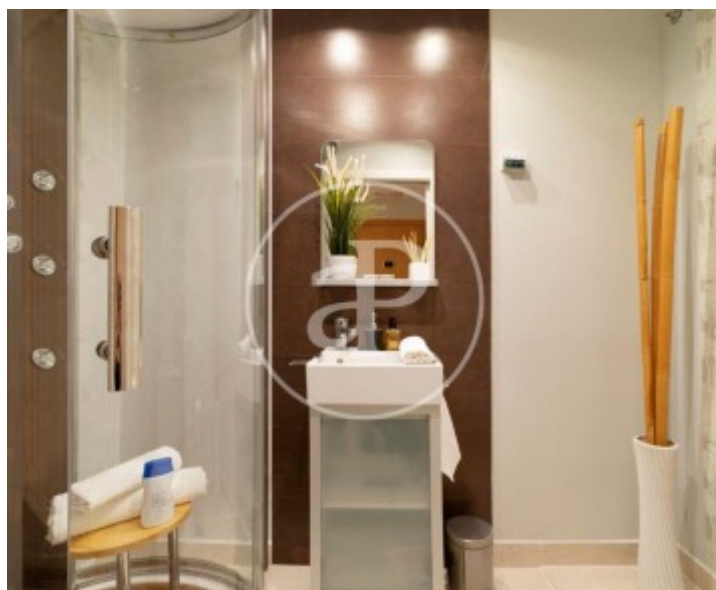
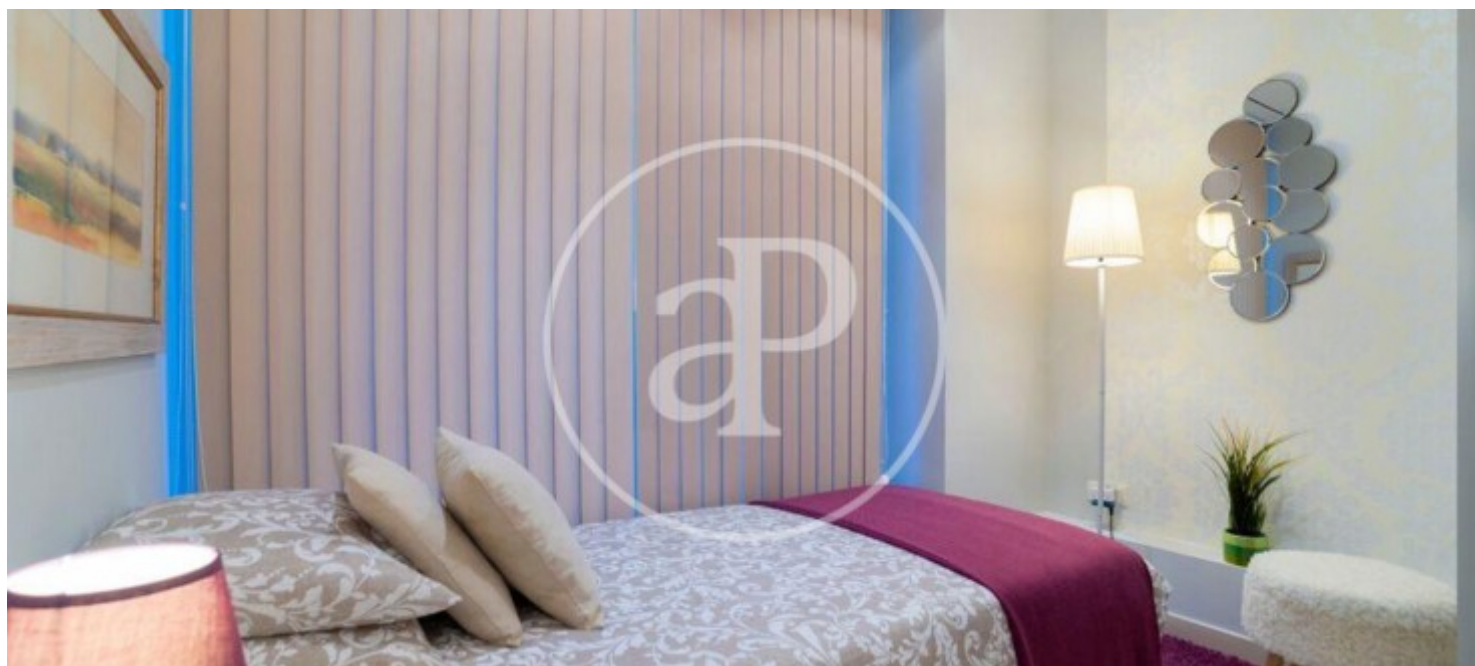
Vega de la Moraleja, San Sebastián de los Reyes

REF. VMN2512012



Vega de la Moraleja, San Sebastián de los Reyes

REF. VMN2512012



The information about any property is not binding to any offer or contract. Any verbal or written declaration made by aProperties with regards to the value or condition of the property should not be considered accurate or factual. The pictures make reference to some parts of the property at the times that they were taken. The areas, dimensions and distances that are given are approximate and should be checked by the client. The images are computer generated and are just an approximate indication of the real appearance of the property; these may change at any time. The information with regards to the property may also change at any time.

For **more information** or
to make an appointment

apropertiesmadrid@aproperties.es
Tel: 91 800 54 65
www.aproperties.es