

Sabadell

REF. ASC2507003

# Apartment for Rent in Can Llong

## Features

- ✓ Views
- ✓ Heating
- ✓ Terrace
- ✓ Backyard
- ✓ Pool
- ✓ Lift

Surface

**104 m<sup>2</sup>**

Bedrooms

**2**

Bathrooms

**2**



Price

**1,300 €**

**Located in Can Llong, we find this wonderful apartment with 104m<sup>2</sup> built area, featuring a communal area with pool and paddle tennis court.**

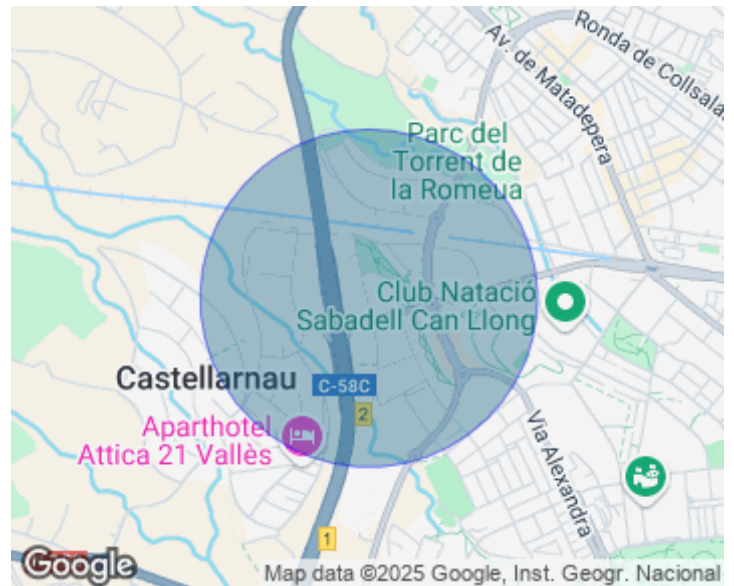
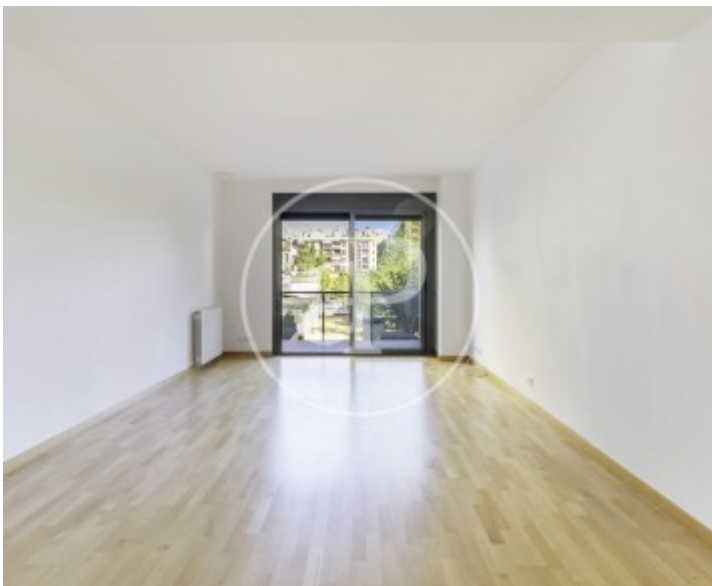
The apartment consists of a spacious and bright living-dining room with access to a pleasant terrace overlooking the communal area, an independent kitchen without appliances, two double bedrooms—one of them en suite—and a second full bathroom. The property has wooden parquet flooring, shutters in all rooms, built-in wardrobes, natural gas heating, and is delivered freshly painted. Optional parking space not included in the monthly rent. Available from September 1st, 2025. This home is located in a privileged

and exclusive residential area of Sabadell. It has excellent connections to the main highways with unbeatable access to Barcelona and the surrounding areas. It offers public transport (bus line) that connects with the rest of the neighborhoods of Sabadell, Renfe train station, and FGC station. Close to schools, supermarkets, restaurants, and shopping areas. It is a location surrounded by green areas just minutes from Vallès Golf. Don't hesitate to visit this property!\* In compliance with Law 12/2023 and Law 18/2007, we inform that Index of R.P.LL: 12,33 € / m<sup>2</sup> State reference price 1...

**Contact us,**  
we will be happy to assist you,  
to offer you more details and information.

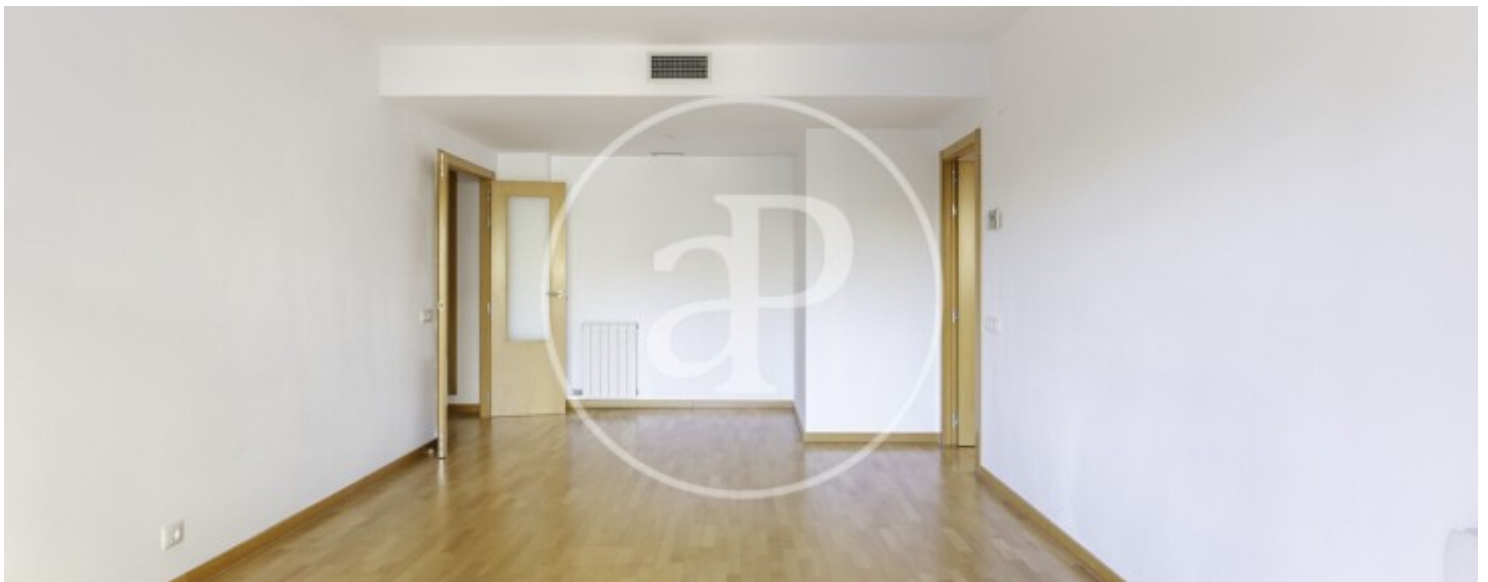
Sabadell

REF. ASC2507003



Sabadell

REF. ASC2507003



Sabadell

REF. ASC2507003



Sabadell

REF. ASC2507003



The information about any property is not binding to any offer or contract. Any verbal or written declaration made by aProperties with regards to the value or condition of the property should not be considered accurate or factual. The pictures make reference to some parts of the property at the times that they were taken. The areas, dimensions and distances that are given are approximate and should be checked by the client. The images are computer generated and are just an approximate indication of the real appearance of the property; these may change at any time. The information with regards to the property may also change at any time.

For **more information** or  
to make an appointment

[apropertiesbarcelona@aproperties.es](mailto:apropertiesbarcelona@aproperties.es)  
Tel: 93 528 89 08  
[www.aproperties.es](http://www.aproperties.es)