



(Rubí)

Ref: ONB2412004



3 and 4 Bedroom Houses in the New Rubí

A set of row houses with front and back gardens, a shared underground garage, located near all services, shops, transportation, and green areas such as Ca n'Oriol Park, close to Sant Cugat del Vallès - Volpelleres. An ideal place to create your new home. The project consists of a total of 38 single-family homes, with a ground floor and 2 upper levels, featuring 4 bedrooms, 3 bathrooms, and a guest toilet. In the basement, they include a private parking space for 2 vehicles. All homes feature spacious terraces, most with gardens, and magnificent views of the nearby Ca n'Oriol Park. Residents can also enjoy a pleasant communal area with a swimming pool. All homes have been designed with modern layouts, open to the outside, and built with sustainable construction criteria and maximum use of space and sunlight.

Rubí

Surface
183 m² - 247 m²
Units
17
Completion
Q4 2025

- ✓ Heating
- ✓ Boxroom
- ✓ AACC
- ✓ Terrace
- ✓ Backyard
- ✓ Pool
- ✓ Has parking

Price from 550,000 €

(Rubí)

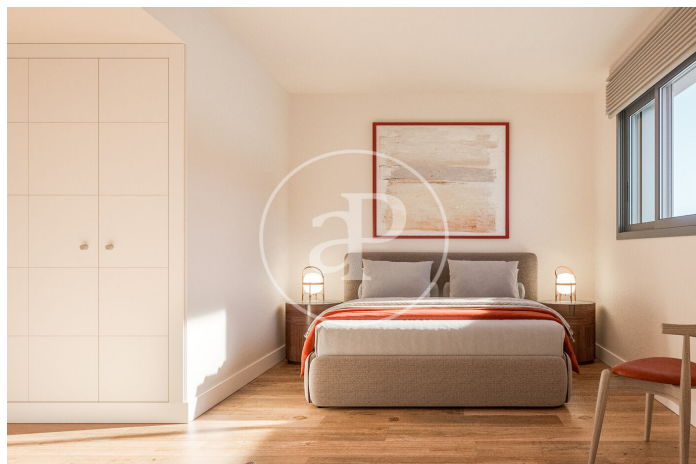
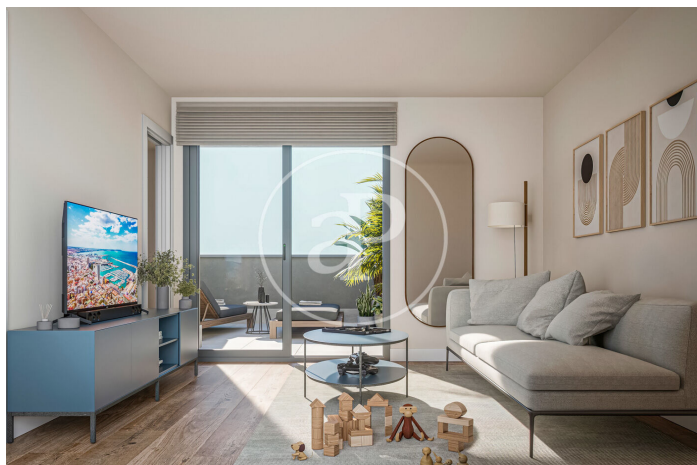
Ref: ONB2412004

Units in this development

<div></div>	Type	House
	Unit	H01
	Surface	247 m ²
	Terrace	5 (115 m ²)
	Bedrooms	4
	Bathrooms	4
	Price	€ 648,000
	State	Available
<div></div>	Type	House
	Unit	H10
	Surface	200 m ²
	Terrace	5 (122 m ²)
	Bedrooms	4
	Bathrooms	4
	Price	€ 625,000
	State	Available
<div></div>	Type	House
	Unit	I05
	Surface	183 m ²
	Terrace	5 (81 m ²)
	Bedrooms	4
	Bathrooms	4
	Price	€ 636,000
	State	Available
<div></div>	Type	House
	Unit	I06
	Surface	200 m ²
	Terrace	5 (136 m ²)
	Bedrooms	4
	Bathrooms	4
	Price	
	State	

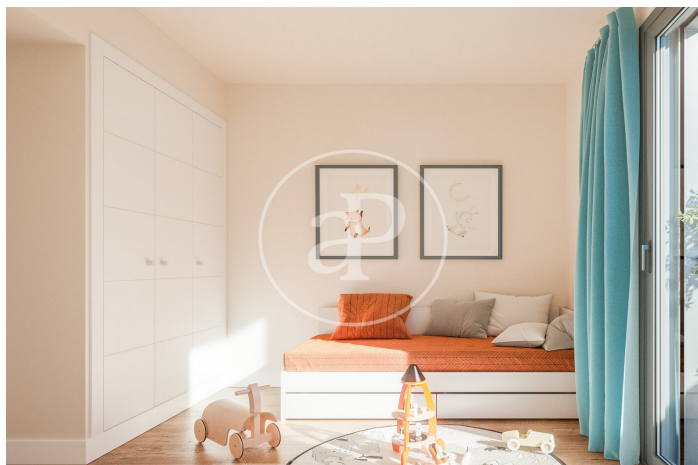
(Rubí)

Ref: ONB2412004



(Rubí)

Ref: ONB2412004



(Rubí)

Ref: ONB2412004



The information about any property is not binding to any offer or contract. Any verbal or written declaration made by aProperties with regards to the value or condition of the property should not be considered accurate or factual. The pictures make reference to some parts of the property at the times that they were taken. The areas, dimensions and distances that are given are approximate and should be checked by the client. The images are computer generated and are just an approximate indication of the real appearance of the property; these may change at any time. The information with regards to the property may also change at any time.

Contact us today for more information or to arrange a viewing

Tel: 93 528 89 08 apropertiesbarcelona@aproperties.es <https://www.aproperties.es>