

Zona Pueblo, Pozuelo

REF. VMO2403005



Detached house for sale in Pozuelo

Features

Surface

450 m²

Bedrooms

6

Bathrooms

6

- ✓ Heating ✓ Boxroom
- ✓ AACC ✓ Backyard
- ✓ Pool ✓ Has parking

Price

1,800,000 €



aProperties presents a detached house totally refurbished in July 2022 with great qualities and design in Pozuelo de Alarcón.

The house of 450 m² is located on a plot of 600 m², consists of 4 floors, with two accesses, the main one and the service one. The property is accessed through a spacious and bright hall. The living room with two rooms has large windows with electric blinds and a large fireplace, the dining room of great amplitude and luminosity gives continuity to the space. On the same floor, we find the kitchen, fully equipped, with independent service entrance and a complete bathroom. On the first floor, there are two en-suite bedrooms and

another two bedrooms sharing a bathroom, all equipped with a large number of wardrobes. In the hall there is a wonderful linen cupboard. The attic is completely diaphanous and has a lot of light, both from the velux windows on the roof and a large window on the side facade that illuminates the space and the staircase and a wonderful bathroom separated with translucent glass from the rest of the room. In the semi-basement there is a service bedroom with its corresponding bathroom, a laundry and ironing room, another one as an office or children's playroom and the exit to the garage with two...

Contact us,
we will be happy to assist you,
to offer you more details and information.

Zona Pueblo, Pozuelo

REF. VMO2403005



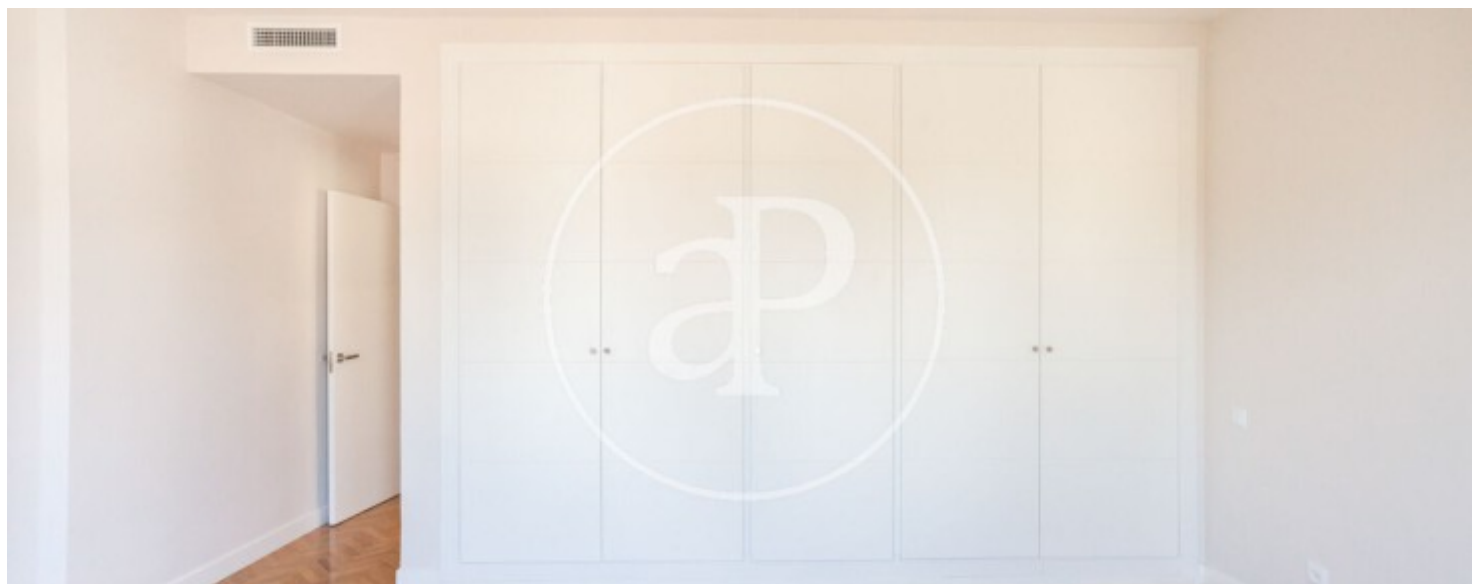
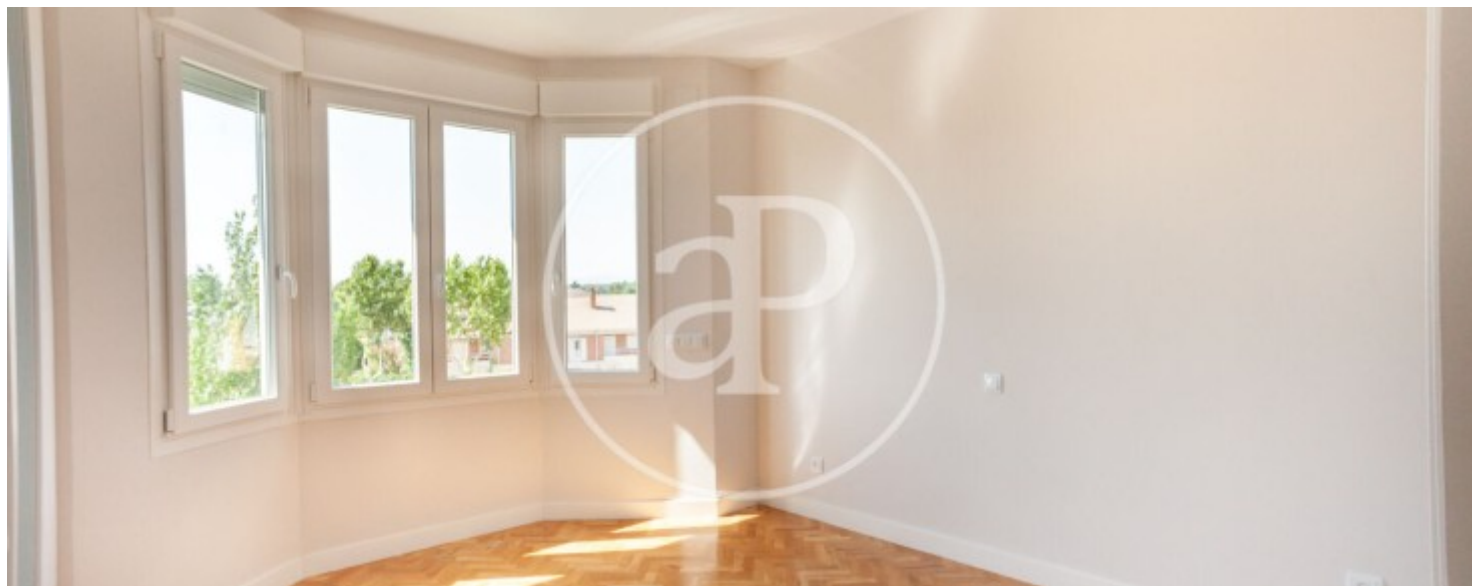
Zona Pueblo, Pozuelo

REF. VMO2403005



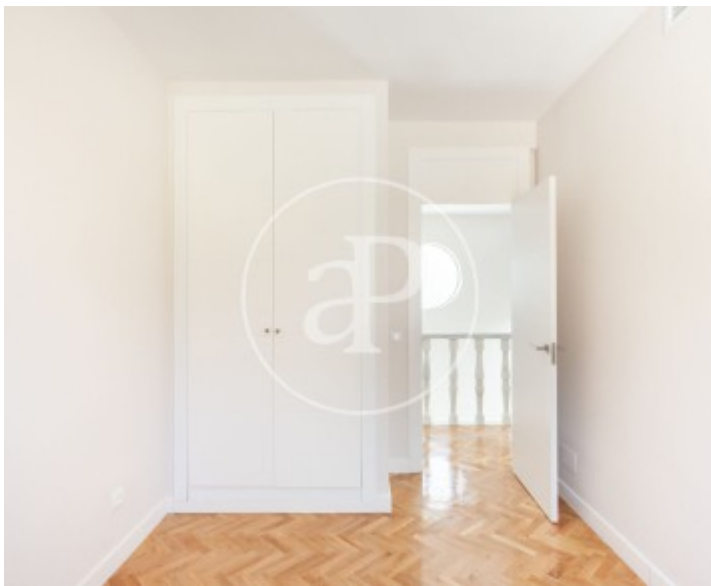
Zona Pueblo, Pozuelo

REF. VMO2403005



Zona Pueblo, Pozuelo

REF. VMO2403005



The information about any property is not binding to any offer or contract. Any verbal or written declaration made by aProperties with regards to the value or condition of the property should not be considered accurate or factual. The pictures make reference to some parts of the property at the times that they were taken. The areas, dimensions and distances that are given are approximate and should be checked by the client. The images are computer generated and are just an approximate indication of the real appearance of the property; these may change at any time. The information with regards to the property may also change at any time.



For **more information** or
to make an appointment

apropertiesmadrid@aproperties.es
Tel: 91 800 54 65
www.aproperties.es