

Zona Estación, Pozuelo

REF. VMO2606014

Townhome for sale in Pozuelo de Alarcón

Features

- ✓ Heating
- ✓ AACC
- ✓ Lift
- ✓ Boxroom
- ✓ Backyard
- ✓ Has parking

Price
2,040,000 €

Surface

416 m²

Bedrooms

5

Bathrooms

6



In El Barrial, between Aravaca and Pozuelo, this paired chalet of 416 m² built on a plot of approximately 220 m² offers a very complete residential proposal, where privacy and constructive quality make the difference. Located in a well-kept urbanization of only 10 neighbors, the house - built in 2015 and completely renovated - stands out for its luminosity, its private garden with chill out area, barbecue and access to community pool. The incorporation of solar panels and safety systems in windows and blinds enhances comfort and efficiency. The house has 5 bedrooms and 4 bathrooms, including one room with bathroom on the ground floor intended for service area, as well as two other large rooms that offer multiple possibilities: from games area to cinema, gym or additional storage area. It has an elevator

that connects all the floors, making daily life easier, and a pleasant closed terrace that allows you to enjoy a versatile space throughout the year. The surroundings of El Barrial are especially appreciated by families looking for tranquility, security and proximity to Madrid, with excellent connections, prestigious schools and large green areas. A residential enclave that combines calm and practicality. From aProperties Real Estate we invite you to discover a home designed for those who prioritize space, comfort and lifestyle in the northwest of Madrid. Can you imagine living here?

Contact us,
we will be happy to assist you,
to offer you more details and information.

Zona Estación, Pozuelo

REF. VMO2606014



Zona Estación, Pozuelo

REF. VMO2606014



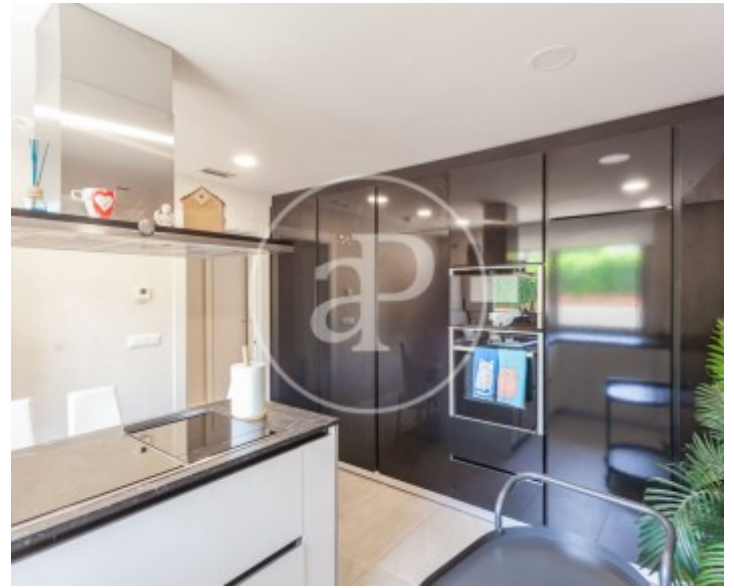
Zona Estación, Pozuelo

REF. VMO2606014



Zona Estación, Pozuelo

REF. VMO2606014



The information about any property is not binding to any offer or contract. Any verbal or written declaration made by aProperties with regards to the value or condition of the property should not be considered accurate or factual. The pictures make reference to some parts of the property at the times that they were taken. The areas, dimensions and distances that are given are approximate and should be checked by the client. The images are computer generated and are just an approximate indication of the real appearance of the property; these may change at any time. The information with regards to the property may also change at any time.

For **more information** or
to make an appointment

apropertiesmadrid@aproperties.es
Tel: 91 800 54 65
www.aproperties.es