

Zona Estación, Pozuelo

REF. VMO2605006

# House for sale in Pozuelo

## Features

- ✓ Heating
- ✓ AACC
- ✓ Backyard
- ✓ Boxroom
- ✓ Terrace
- ✓ Has parking

Price

**1,390,000 €**

Surface

**350 m<sup>2</sup>**

Bedrooms

**4**

Bathrooms

**5**



**This charming corner townhouse, with approximately 350 sqm built on a 274 sqm plot, was completely renovated in 2023 and is distributed over four floors with spacious, bright, and functional areas.**

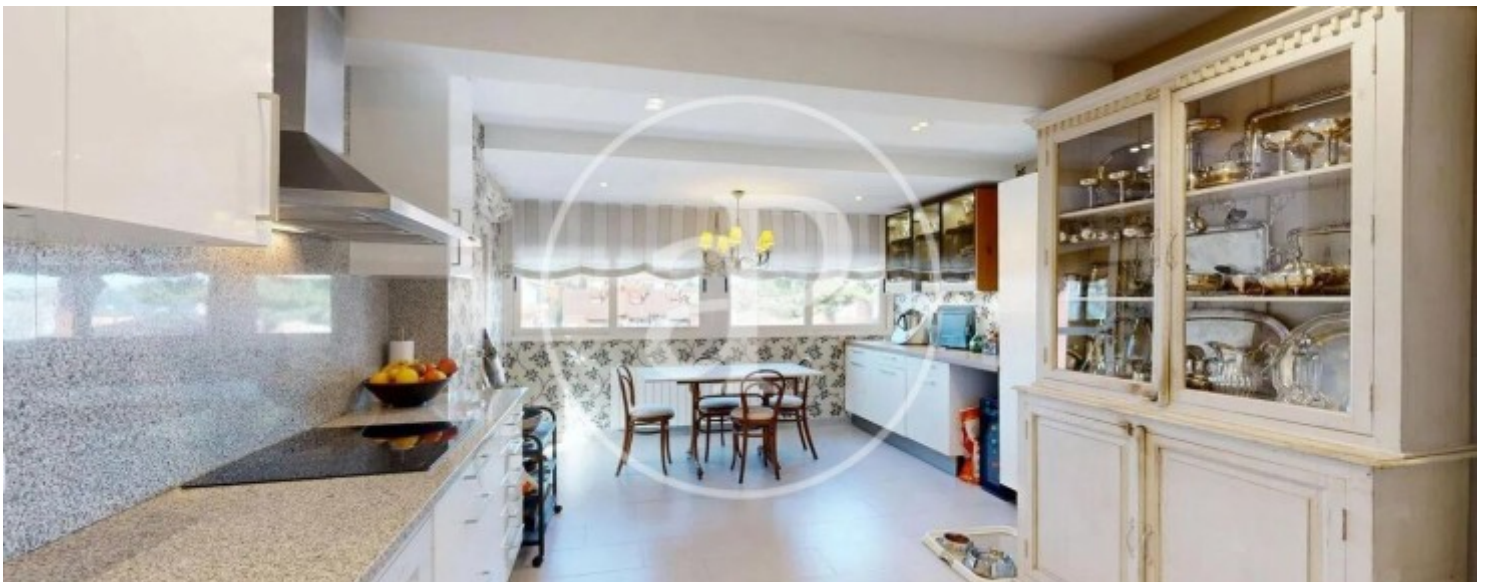
Main floor: the heart of the property is occupied by a spectacular living room with floor-to-ceiling windows that flood the space with natural light and open onto the garden, creating a seamless connection between indoor and outdoor living. The glass-enclosed dining room, with direct access to the garden, stands out for its unique character, enhanced by elegant natural terracotta flooring that brings a warm Mediterranean feel. The spacious and bright kitchen features an

office area and direct access to the exterior, where there is a charming vegetable garden. The private garden includes a swimming pool, an outdoor dining area with a pergola, and pleasant spaces designed for relaxation and outdoor leisure. First floor: dedicated to the sleeping area, this floor offers three bedrooms: a master bedroom with dressing room and en-suite bathroom, plus two additional bedrooms sharing a bathroom. Attic floor: on the third floor we find a magnificent attic with a full bathroom, full of charm and versatility, ideal as an additional bedroom, office, or leisure area....

**Contact us,**  
we will be happy to assist you,  
to offer you more details and information.

Zona Estación, Pozuelo

REF. VMO2605006



Zona Estación, Pozuelo

REF. VMO2605006



Zona Estación, Pozuelo

REF. VMO2605006



Zona Estación, Pozuelo

REF. VMO2605006



The information about any property is not binding to any offer or contract. Any verbal or written declaration made by aProperties with regards to the value or condition of the property should not be considered accurate or factual. The pictures make reference to some parts of the property at the times that they were taken. The areas, dimensions and distances that are given are approximate and should be checked by the client. The images are computer generated and are just an approximate indication of the real appearance of the property; these may change at any time. The information with regards to the property may also change at any time.

For **more information** or  
to make an appointment

[apropertiesmadrid@aproperties.es](mailto:apropertiesmadrid@aproperties.es)  
Tel: 91 800 54 65  
[www.aproperties.es](http://www.aproperties.es)