

Zona Estación, Pozuelo

REF. VMO2602004

Chalet for sale in Pozuelo de Alarcón

Features

- ✓ Heating
- ✓ Terrace
- ✓ Pool
- ✓ AACC
- ✓ Backyard
- ✓ Has parking

Price
1,525,000 €

Surface
283 m²

Plot surface
221 m²

Bedrooms
4

Bathrooms
5



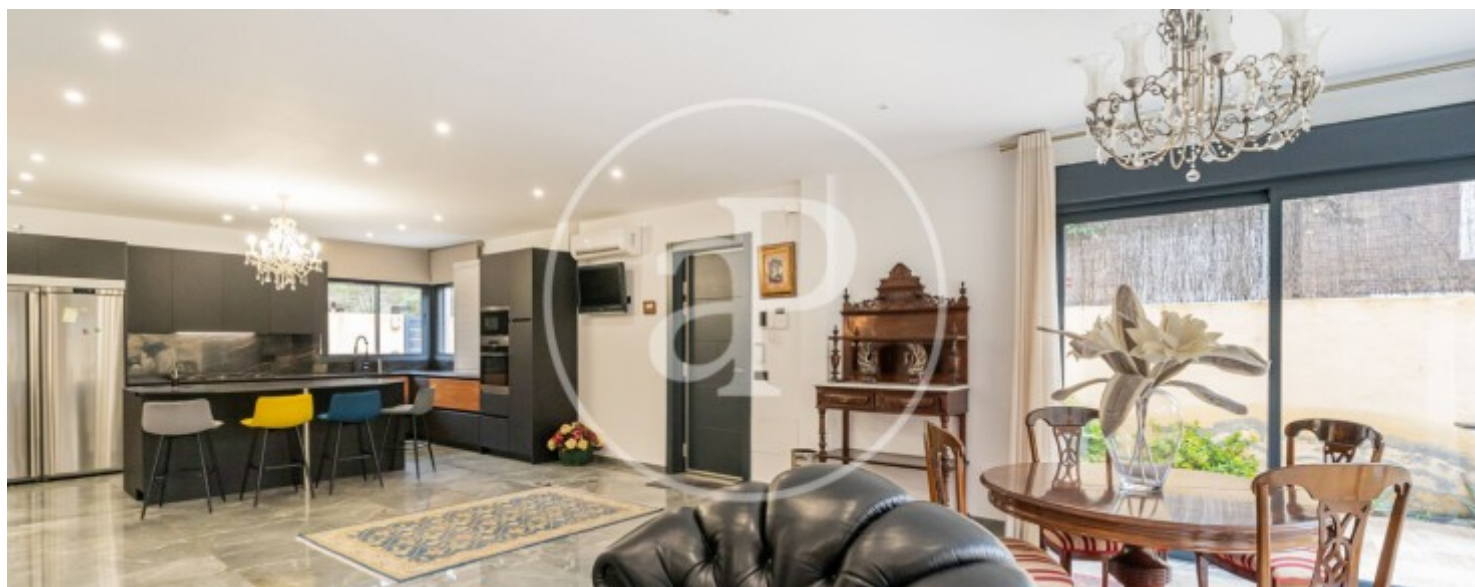
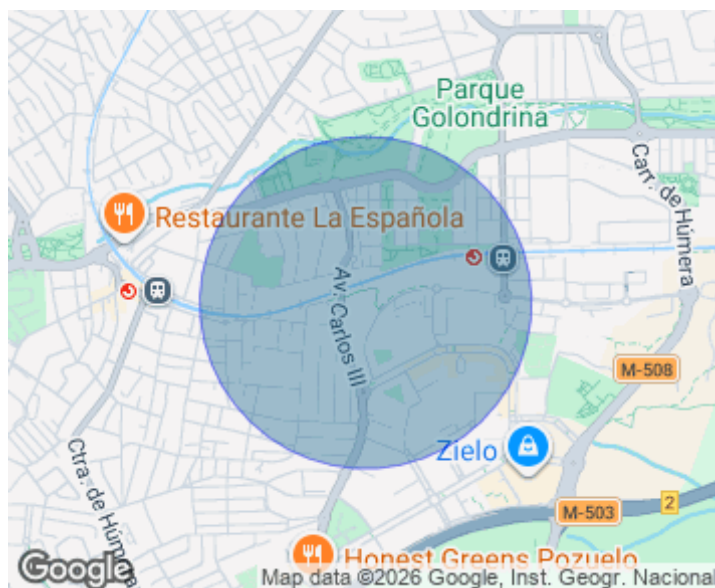
AProperties presents this exclusive semi-detached villa in Pozuelo de Alarcón, located in one of the most sought-after residential areas, between Avenida de Europa and the train station, with excellent communications and a wide range of services, schools and green areas. The house, built in 2023, stands out for its careful distribution, luminosity and a selection of high-end materials. It has an elevator adapted for people with reduced mobility, with access to all floors, which guarantees comfort and functionality in the day to day. On the ground floor, a spacious and bright living room with large windows opens directly to the private garden with swimming pool, creating an ideal space to enjoy with family or friends. The open kitchen, equipped with a central island, combines design

and practicality. On this floor there is also a separate pantry and a toilet. The first floor is intended for the rest area. It houses the master bedroom, which has a spacious walk-in closet and an en suite bathroom with a spa bath and shower. Complete this floor a second bedroom and an additional full bathroom. The second floor has a spacious bedroom, which has a full bathroom with shower and access to a terrace with stunning views of the skyline of Madrid. On both sides of the floor are two attic rooms, ideal as auxiliary spaces, dressing room, storage area or...

Contact us,
we will be happy to assist you,
to offer you more details and information.

Zona Estación, Pozuelo

REF. VMO2602004



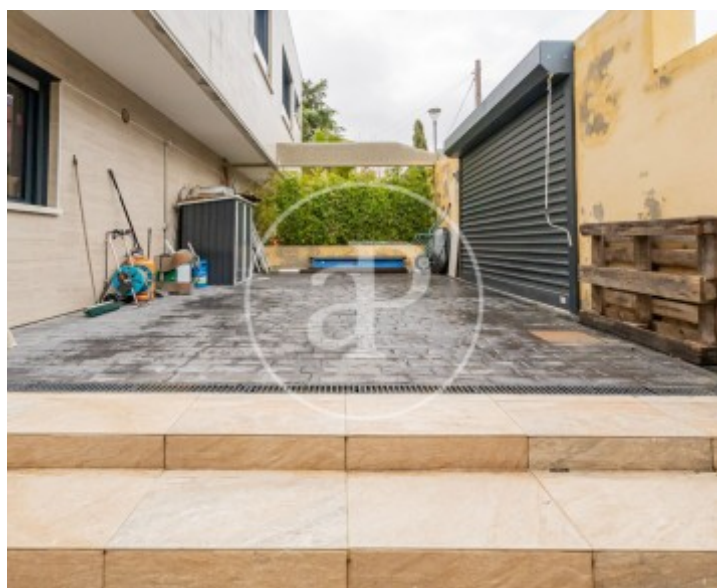
Zona Estación, Pozuelo

REF. VMO2602004



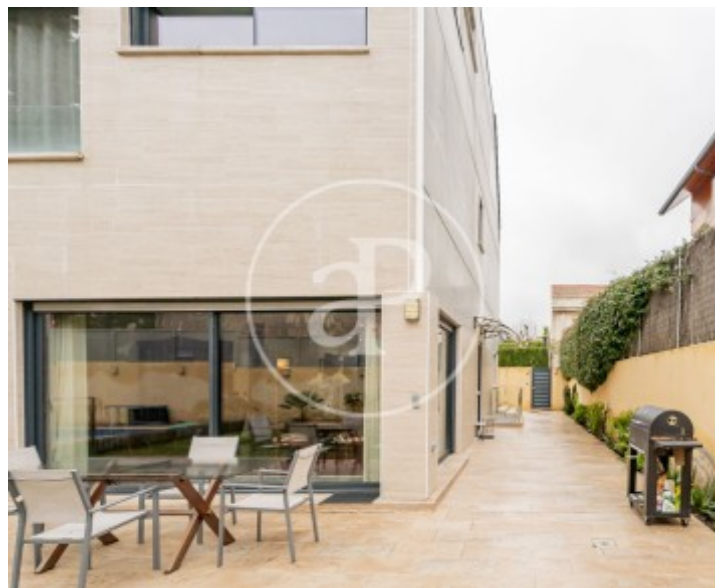
Zona Estación, Pozuelo

REF. VMO2602004



Zona Estación, Pozuelo

REF. VMO2602004



The information about any property is not binding to any offer or contract. Any verbal or written declaration made by aProperties with regards to the value or condition of the property should not be considered accurate or factual. The pictures make reference to some parts of the property at the times that they were taken. The areas, dimensions and distances that are given are approximate and should be checked by the client. The images are computer generated and are just an approximate indication of the real appearance of the property; these may change at any time. The information with regards to the property may also change at any time.

For **more information** or
to make an appointment

apropertiesmadrid@aproperties.es
Tel: 91 800 54 65
www.aproperties.es