



Prado Largo, Pozuelo

REF. VMO2311003

# House for sale in Prado Largo.

## Features

- ✓ Views
- ✓ Boxroom
- ✓ Terrace
- ✓ Pool
- ✓ Security
- ✓ Heating
- ✓ AACC
- ✓ Backyard
- ✓ Gym
- ✓ Has parking

Surface

**925 m<sup>2</sup>**

Bedrooms

**8**

Bathrooms

**7**



Price

**Price upon request**

## In one of the best plots of the urbanization, with more than 5.

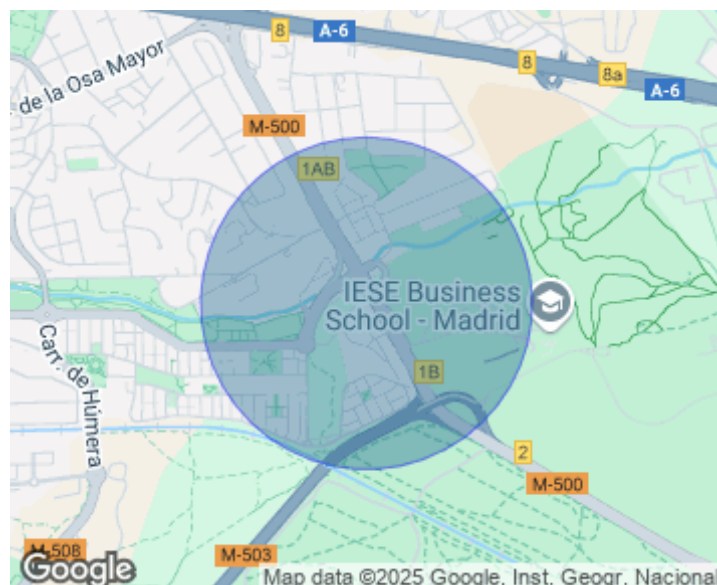
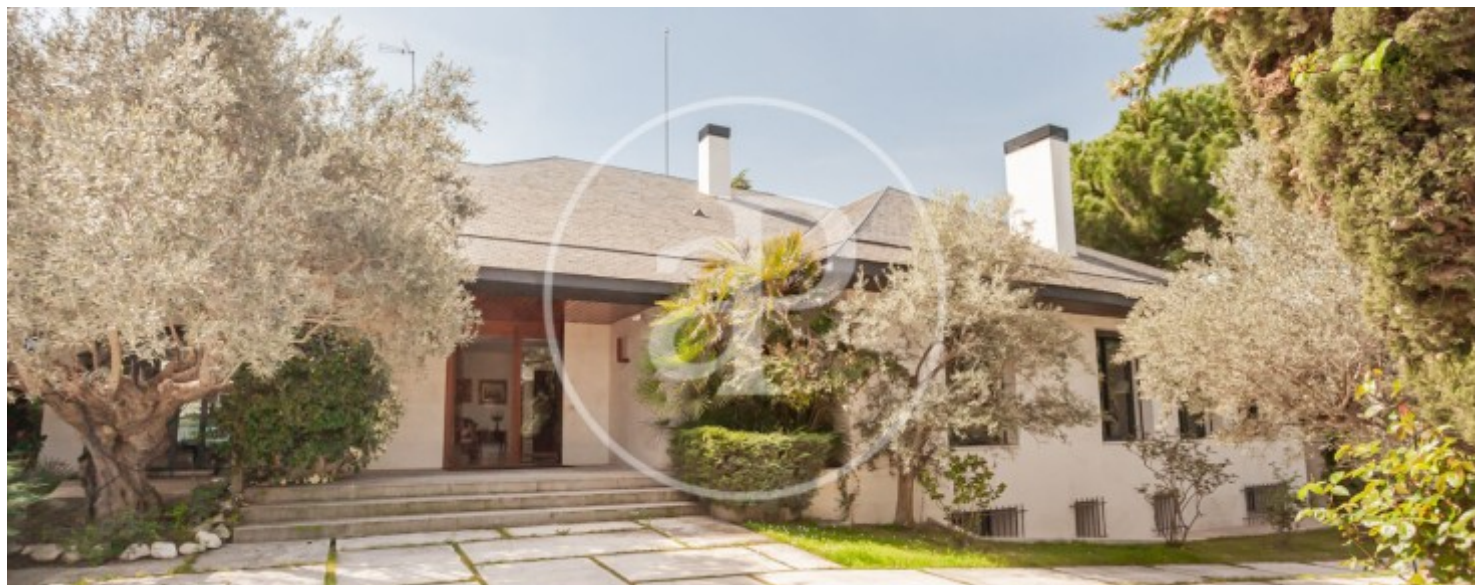
400 m<sup>2</sup>, a very consolidated garden and maximum privacy, we find this fantastic house of 925 m<sup>2</sup> built with a floor of 550 m<sup>2</sup>. The main floor with 550 m<sup>2</sup>, a large hall, large spaces with large windows overlooking the garden. Large hall leading to the living room of more than 130 m<sup>2</sup>, several rooms and large windows overlooking the garden with access to the porch. The sleeping area consists of a master bedroom with large wardrobe area, bathroom, access to a second bedroom and access to an indoor swimming pool. Three other large bedrooms, one of them en suite

and two other bedrooms sharing a bathroom. Kitchen with central island and office area. From the stairs of the kitchen we access to the service floor of the house. This floor consists of two service rooms with two bathrooms, independent flat with entrance from the garden with two bedrooms, kitchen, living room and bathroom. Multi-purpose room with kitchen, laundry area, boiler room, two storage rooms and garage. 24 hour surveillance, urbanisation with a single entrance and exit, which provides security and peace of mind for the owners. Underfloor heating and...

**Contact us,**  
we will be happy to assist you,  
to offer you more details and information.

Prado Largo, Pozuelo

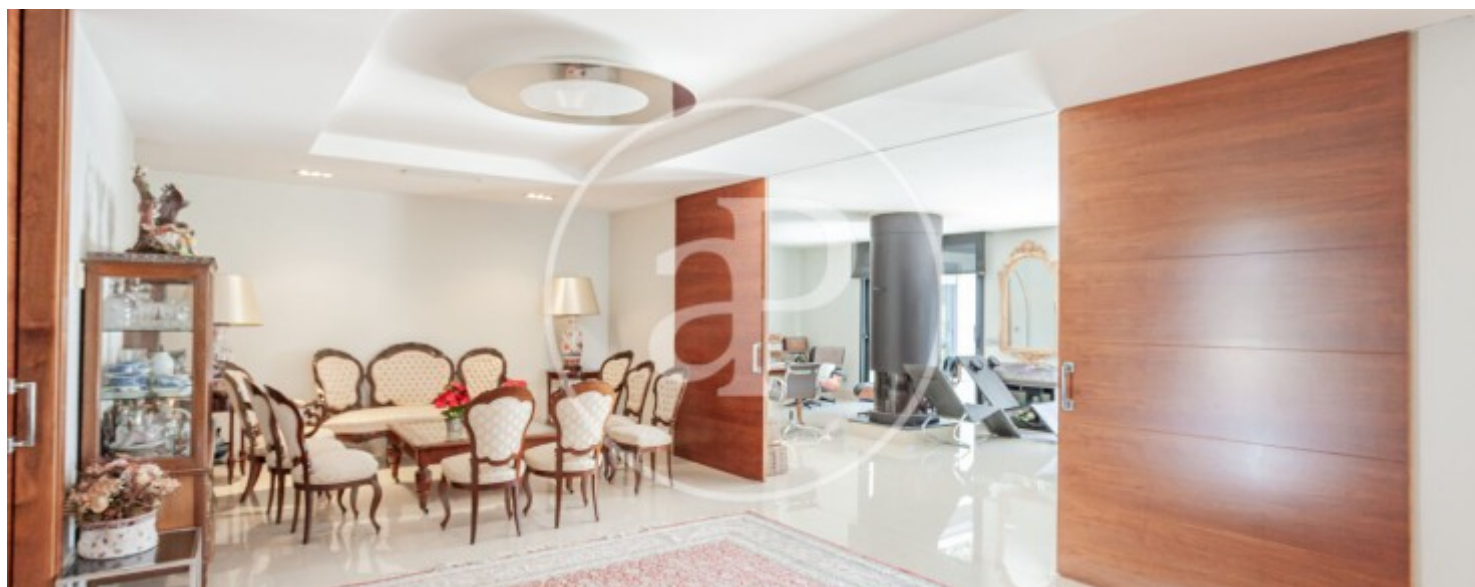
REF. VMO2311003





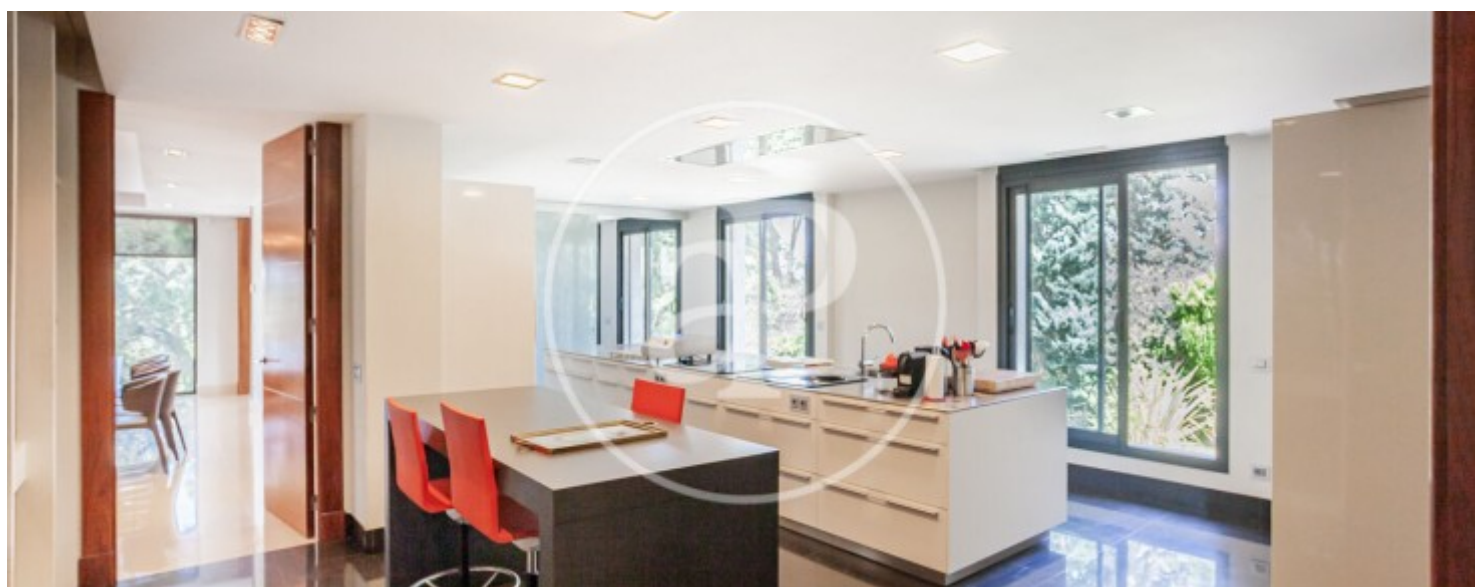
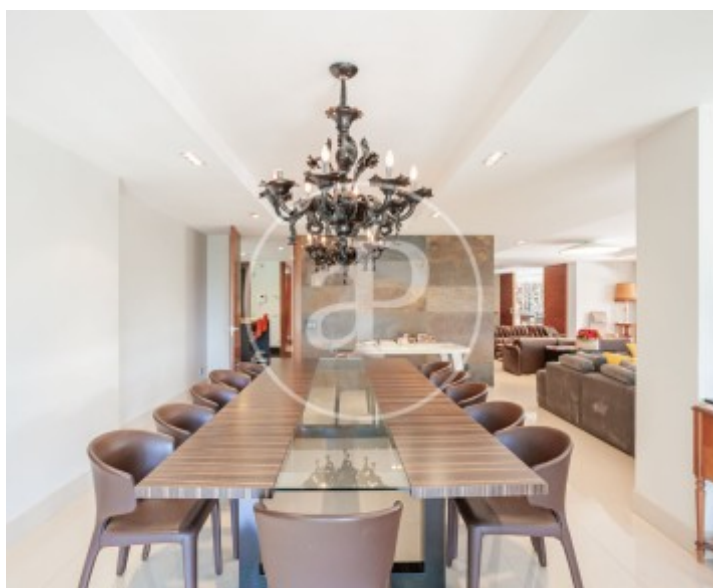
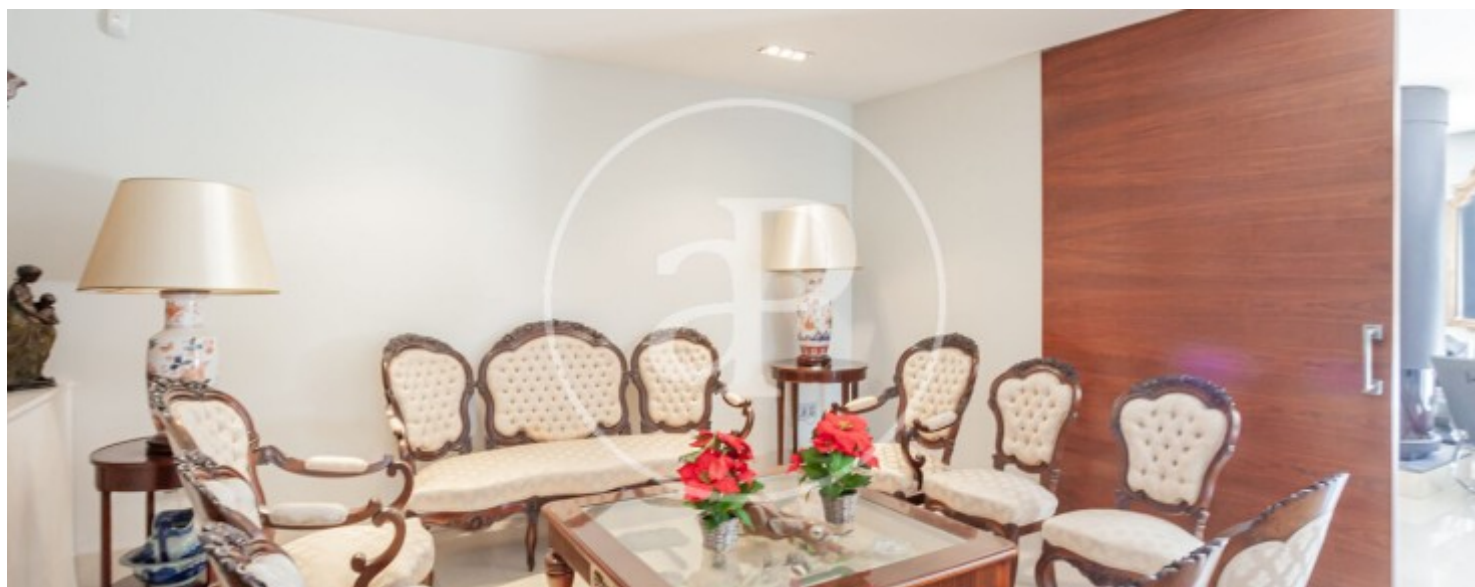
Prado Largo, Pozuelo

REF. VMO2311003



Prado Largo, Pozuelo

REF. VMO2311003





Prado Largo, Pozuelo

REF. VMO2311003



The information about any property is not binding to any offer or contract. Any verbal or written declaration made by aProperties with regards to the value or condition of the property should not be considered accurate or factual. The pictures make reference to some parts of the property at the times that they were taken. The areas, dimensions and distances that are given are approximate and should be checked by the client. The images are computer generated and are just an approximate indication of the real appearance of the property; these may change at any time. The information with regards to the property may also change at any time.

For **more information** or  
to make an appointment

[apropertiesmadrid@aproperties.es](mailto:apropertiesmadrid@aproperties.es)  
Tel: 91 800 54 65  
[www.aproperties.es](http://www.aproperties.es)