



Monte Alina, Pozuelo

REF. VMO2509013

House for sale in Monte Alina (Pozuelo)

Features

- ✓ Heating
- ✓ AACC
- ✓ Backyard
- ✓ Pool
- ✓ Security
- ✓ Has parking

Price

2,500,000 €

Surface

627 m²

Plot surface

2,220 m²

Bedrooms

5

Bathrooms

6



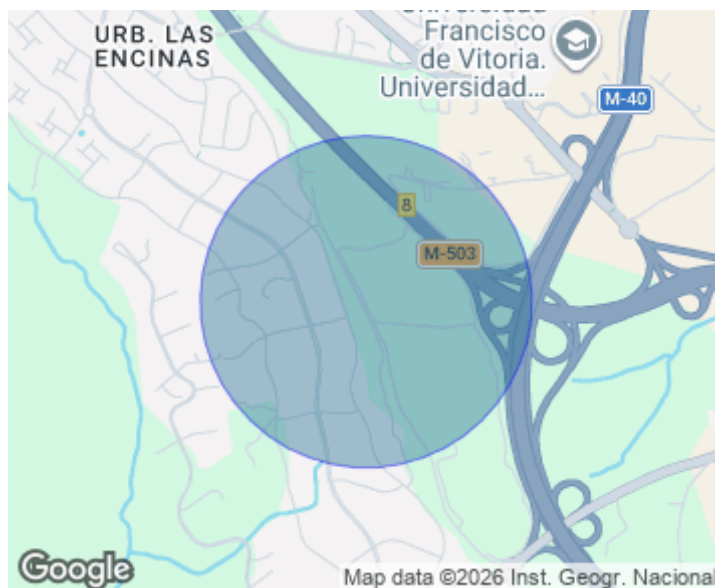
Appropriates presents this beautiful detached villa, measuring 627 m² (according to the land registry) on a 2,220 m² plot with a pool and tennis court, located in the prestigious Monte Alina residential development. The plot is very flat and stands out for its privacy, away from prying eyes. The house has a well-kept façade in excellent condition and is made of fine materials. It is accessed through a large hall that leads to the living-dining room. Also on this floor is a guest toilet. To the right, there is a spacious entrance area that could be used as a dining room or integrated into the living room, and also houses the kitchen. On this floor, there is also a bedroom with an en suite bathroom. On the same floor, although slightly elevated, there are two bedrooms that share a

bathroom and the master bedroom with an en suite bathroom. On the upper floor, there is a storage room, a bedroom, and an 80 m² attic with a bathroom. In the basement, there is a living room, a staff bedroom with a bathroom, and the garage. There is also another lower floor with a raw basement. The Monte Alina development is one of the most prestigious and secure, with 24-hour visitor access control. It has two tennis courts, one for paddle tennis, and green areas. Can you imagine living here?

Contact us,
we will be happy to assist you,
to offer you more details and information.

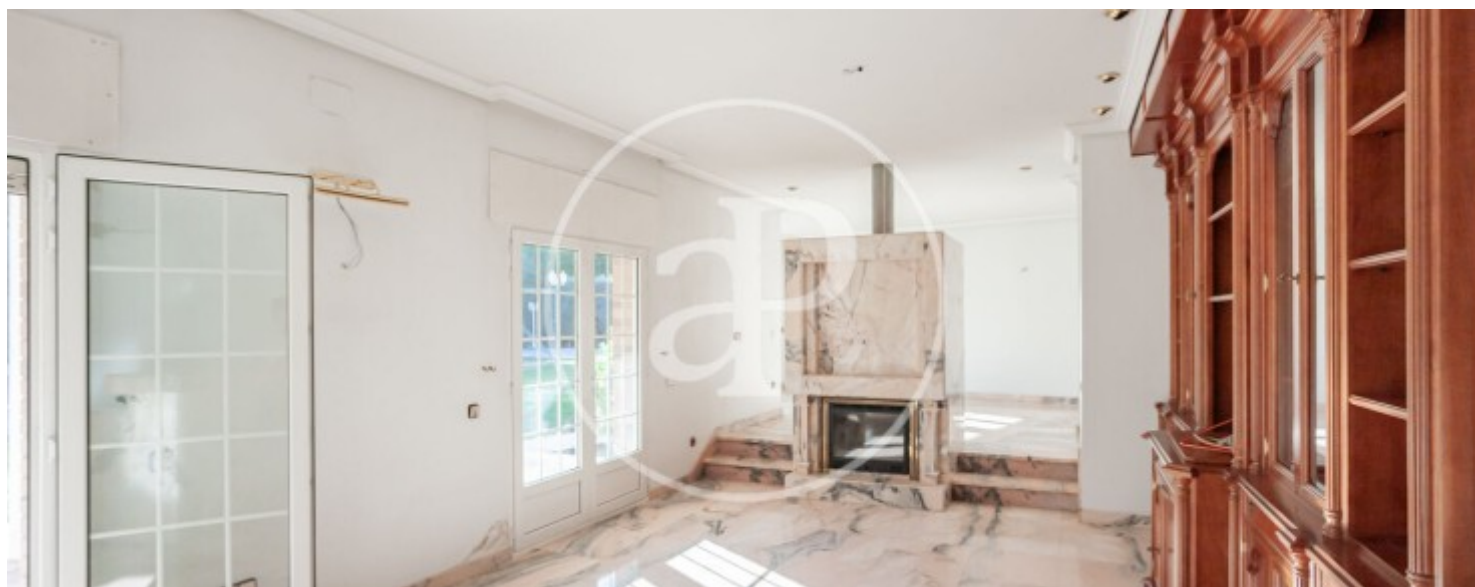
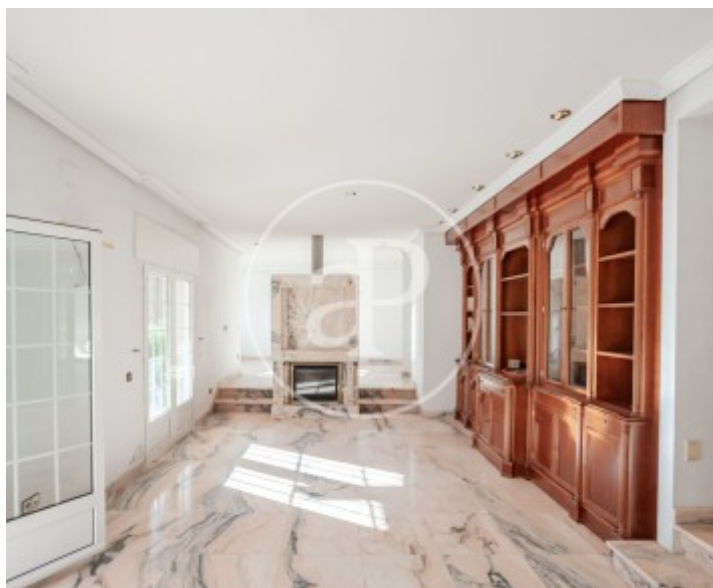
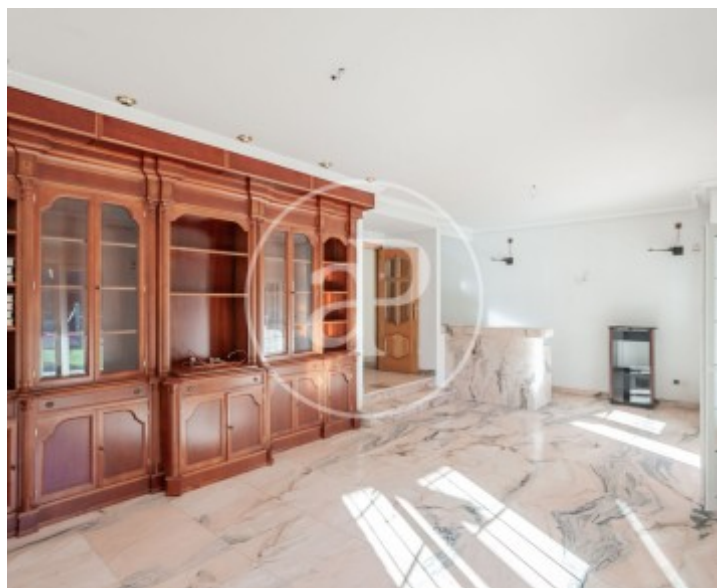
Monte Alina, Pozuelo

REF. VMO2509013



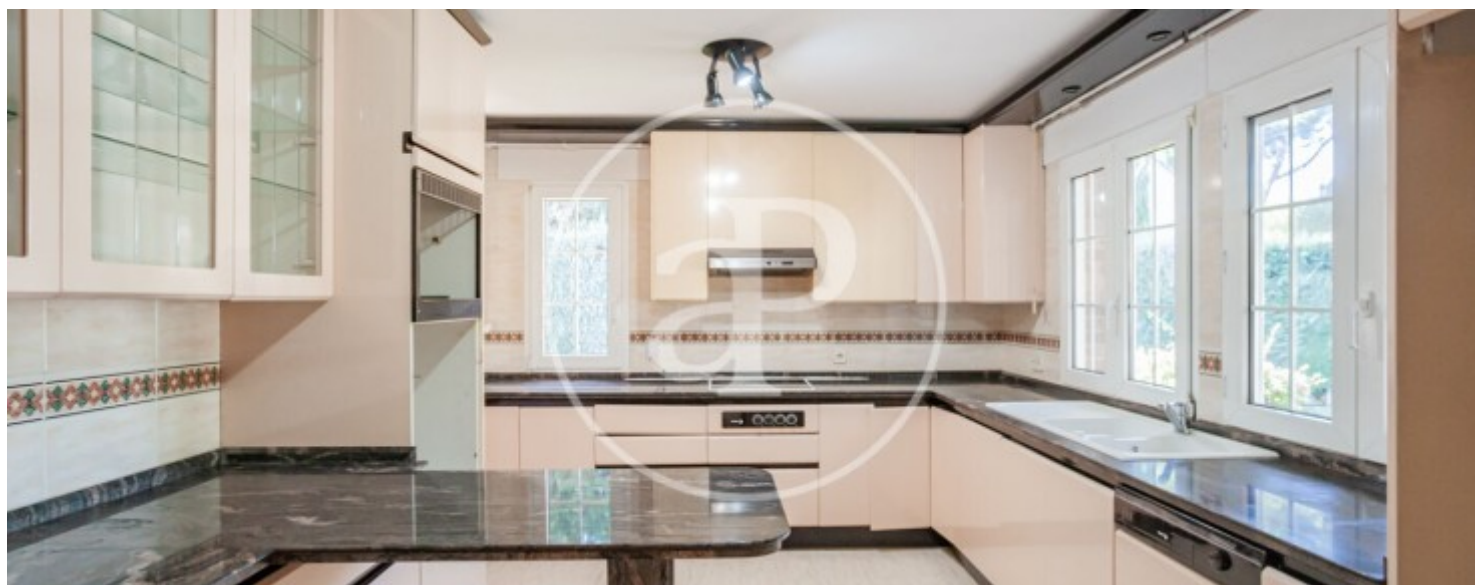
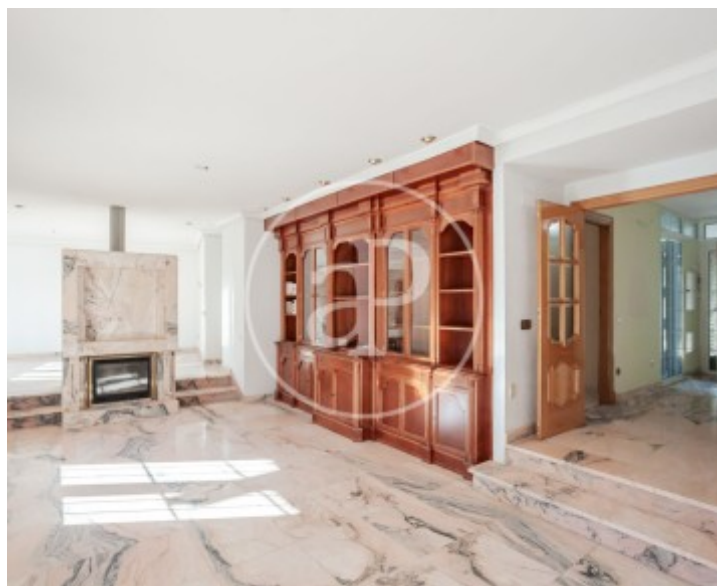
Monte Alina, Pozuelo

REF. VMO2509013



Monte Alina, Pozuelo

REF. VMO2509013



Monte Alina, Pozuelo

REF. VMO2509013



The information about any property is not binding to any offer or contract. Any verbal or written declaration made by aProperties with regards to the value or condition of the property should not be considered accurate or factual. The pictures make reference to some parts of the property at the times that they were taken. The areas, dimensions and distances that are given are approximate and should be checked by the client. The images are computer generated and are just an approximate indication of the real appearance of the property; these may change at any time. The information with regards to the property may also change at any time.

For **more information** or
to make an appointment

apropertiesmadrid@aproperties.es
Tel: 91 800 54 65
www.aproperties.es