

La Finca, Pozuelo

REF. VMO2605011

Chalet for sale in La Finca

Features

- ✓ Heating
- ✓ AACC
- ✓ Backyard
- ✓ Gym
- ✓ Security
- ✓ Has parking

Price

4,100,000 €

Surface

756 m²

Plot surface

1,150 m²

Bedrooms

5

Bathrooms

6



In La Finca, one of the most exclusive residential enclaves in the Community of Madrid, aProperties presents a detached villa that redefines what it means to live well in Pozuelo de Alarcón.

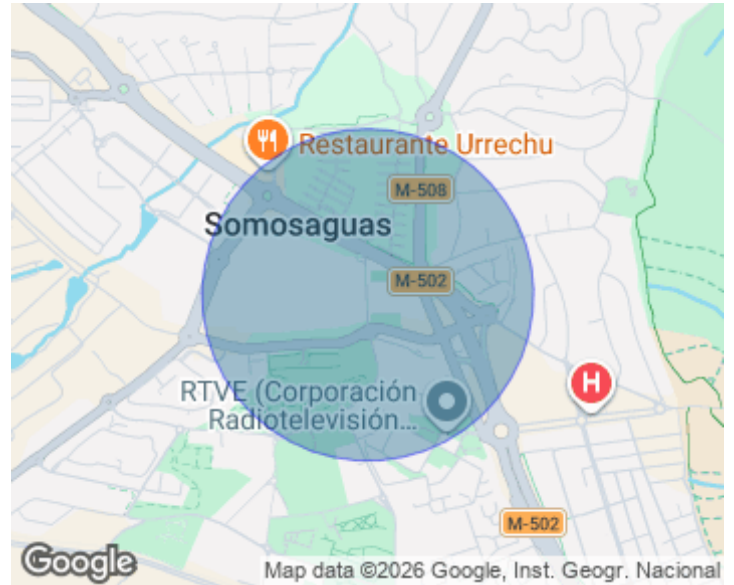
Located within the urbanization Blanca Paloma, with private security 24 hours, this home combines absolute privacy, exceptional spaciousness and one of the most coveted addresses in the metropolitan area: more than 750 m² built on a plot of 1,150 m², designed for families who want to have everything without giving up anything. The distribution is as generous as it is smart. An imposing entrance hall articulates the different spaces of the main floor: a living room

with library, the guest toilet and, a few steps above, the main lounge with double height ceilings and large windows that open onto the porch, garden and private pool. The dining room, directly connected with a large kitchen with office, which has an independent exit to the outside and service entrance, which facilitates both daily life and family privacy. The first floor concentrates the private area: the master bedroom with large walk-in closet and bathroom en suite, accompanied by three other bedrooms, each with its own bathroom en suite. The basement completes this...

Contact us,
we will be happy to assist you,
to offer you more details and information.

La Finca, Pozuelo

REF. VMO2605011



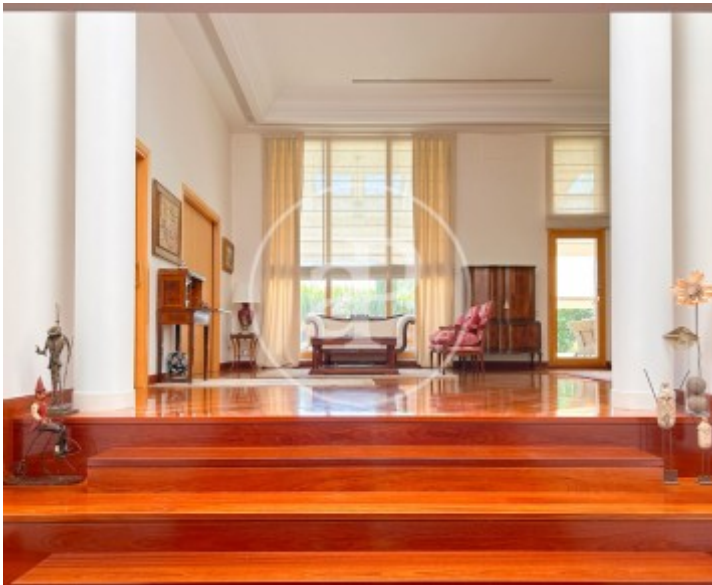
La Finca, Pozuelo

REF. VMO2605011



La Finca, Pozuelo

REF. VMO2605011



La Finca, Pozuelo

REF. VMO2605011



The information about any property is not binding to any offer or contract. Any verbal or written declaration made by aProperties with regards to the value or condition of the property should not be considered accurate or factual. The pictures make reference to some parts of the property at the times that they were taken. The areas, dimensions and distances that are given are approximate and should be checked by the client. The images are computer generated and are just an approximate indication of the real appearance of the property; these may change at any time. The information with regards to the property may also change at any time.

For **more information** or
to make an appointment

apropertiesmadrid@aproperties.es
Tel: 91 800 54 65
www.aproperties.es