

(Port de la Selva)

Ref: ONB2004002



Promotion of New Construction in El Port de la Selva

Building of 21 apartments at 10 minutes from the beach. Flats from 80 to 96 sqm with 2 or 3 rooms. The communal area has a garden and swimming pool. In the same building there are parking spaces and storage rooms. Ground floors with private garden. First and second floors with large terraces with sea views. Penthouses with terrace to 2 and 3 winds, spectacular views to the bay of Port de la Selva and the nature that surrounds it. Laminated flooring in all rooms, procelanic stoneware flooring in the bathrooms and grey or beige stoneware tiles on the terraces. Closed kitchens except for the attics. Equipped with the following appliances: extractor hood, induction ceramic hob, electric oven and microwave. The building has 3 staircases equipped with a lift and a staircase giving access to parking on the floors. Unbeatable opportunity to buy a home in the Alt Empordà. Port de la Selva is a unique enclave of the Catalan geography with a diversity of cultural and gastronomic offer. Being in the Natural Park of Cap de Creus, the house is surrounded by idyllic places and wild areas. Promotion of New Construction in El Port de la Selva Building of 21 apartments at 10 minutes fr [...]

Port de la Selva

Surface
81 m² - 97 m²
Units
21
Completion
Q2 2021

- ✓ Views
- ✓ Heating
- ✓ AACC
- ✓ Terrace
- ✓ Backyard
- ✓ Pool
- ✓ Lift
- ✓ Has parking

Price from 295,000 €

(Port de la Selva)

Ref: ONB2004002

Units in this development

Type	Unit	Surface	Terrace	Bedrooms	Bathrooms	Price	State
Flat	Bajo Esc.	97 m ²	1 (261 m ²)	3	2	€ 0	Sold
Flat	Bajo Esc.	81 m ²	1 (95 m ²)	2	2	€ 295,000	Available
Flat	1° Esc. A	96 m ²	1 (14 m ²)	3	2	€ 305,000	Available
Flat	1° Esc. A	92 m ²	1 (11 m ²)	3	2	€ 295,000	Available
Flat	2° Esc. A	96 m ²	1 (14 m ²)	3	2	€ 315,000	Available
Attic	3° Esc. A	92 m ²	1 (147 m ²)	2	2	€ 0	Sold
Flat	Bajo Esc.	81 m ²	1 (95 m ²)	2	2	€ 295,000	Available
Flat	Bajo Esc.	93 m ²	1 (105 m ²)	3	2	€ 0	Sold
Flat	1° Esc. B	92 m ²	1 (11 m ²)	3	2	€ 0	Sold
Flat	1° Esc. B	92 m ²	1 (11 m ²)	3	2	€ 0	Sold
Flat	2° Esc. B	92 m ²	1 (11 m ²)	3	2	€ 325,000	Available
Attic	3° Esc. B	94 m ²	1 (68 m ²)	2	3	€ 0	Sold
Flat	Bajo Esc.	97 m ²	1 (228 m ²)	3	2	€ 0	Sold
Flat	1° Esc. C	92 m ²	1 (11 m ²)	3	2	€ 295,000	Available
Flat	1° Esc. C	96 m ²	1 (14 m ²)	3	2	€ 310,000	Available
Flat	2° Esc. C	96 m ²	1 (14 m ²)	3	2	€ 0	Sold
Attic	3° Esc. C	91 m ²	1 (147 m ²)	2	2	€ 0	Sold

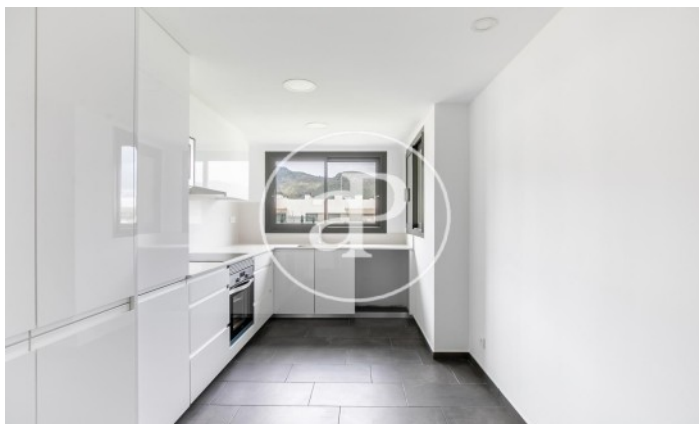
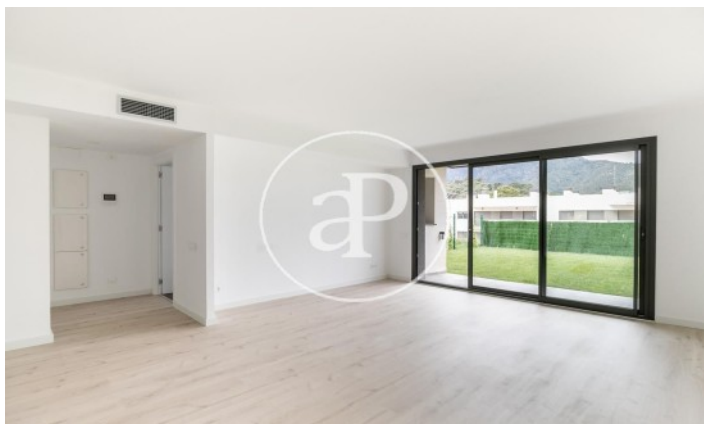
(Port de la Selva)

Ref: ONB2004002



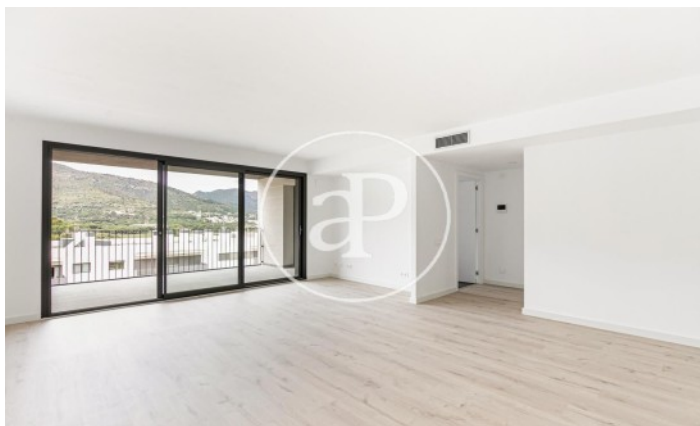
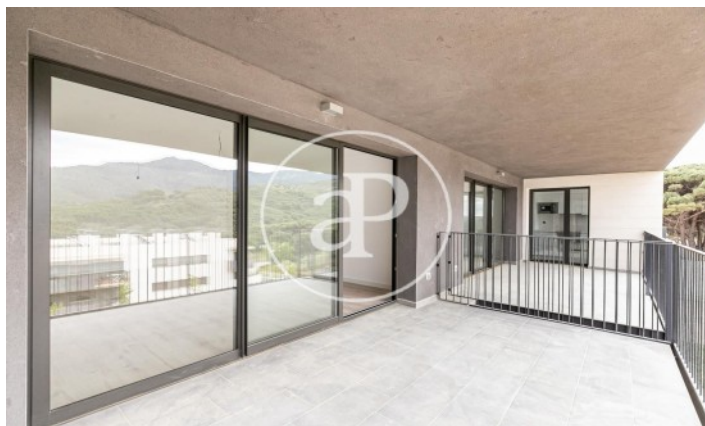
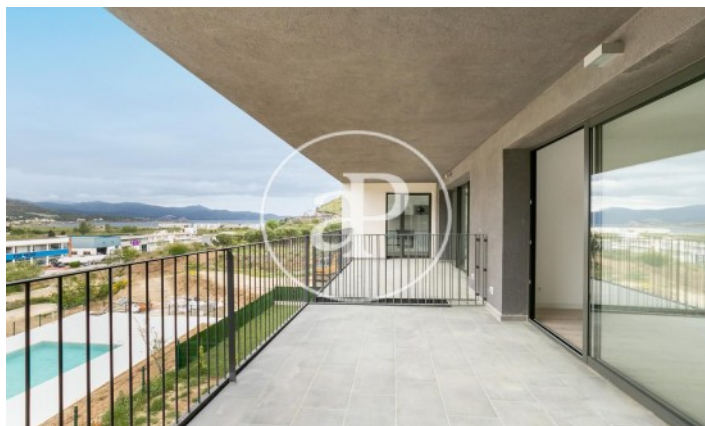
(Port de la Selva)

Ref: ONB2004002



(Port de la Selva)

Ref: ONB2004002



The information about any property is not binding to any offer or contract. Any verbal or written declaration made by aProperties with regards to the value or condition of the property should not be considered accurate or factual. The pictures make reference to some parts of the property at the times that they were taken. The areas, dimensions and distances that are given are approximate and should be checked by the client. The images are computer generated and are just an approximate indication of the real appearance of the property; these may change at any time. The information with regards to the property may also change at any time.

Contact us today for more information or to arrange a viewing

Tel: 93 528 89 08

apropertiesbarcelona@aproperties.es

<https://www.aproperties.es>