

Puerto de Pollença, Pollença

REF. VPM2310030



Plot for sale in Puerto de Pollensa

Features

Surface
1,007 m²

Price

499,000 €



We present a unique opportunity in the spectacular Puerto de Pollensa, a perfect enclave for year-round living.

This exceptional plot comes with a basic project for a detached single family home, plus a swimming pool, offering an unrivalled lifestyle in one of Mallorca's most sought after destinations. Privileged Location: This plot is in a truly spectacular location in the Gotmar neighborhood of Puerto Pollensa. The proximity to the beaches, restaurants, stores and all the amenities of this exclusive residential neighborhood is unmatched. Ideal Size: With an area of 1007 m² of land, living area of 202.45 m² and 407.9 m² of total construction, this property will

offer more than enough space for all your needs and comfort. Water mirror surface 50.15 m² Exclusive Design: The basic project of the house is distributed in three floors. On the access floor, you will find an open and luminous space perfect for daily life. The first floor has ample space for family and visitors. The basement floor offers even more space and versatility. In addition, you can enjoy a private pool, adding a touch of luxury. This is a unique opportunity to create your dream residence in one of the most desirable destinations in Mallorca. For more information about this...

Contact us,
we will be happy to assist you,
to offer you more details and information.

Puerto de Pollença, Pollença

REF. VPM2310030



Puerto de Pollença, Pollença

REF. VPM2310030



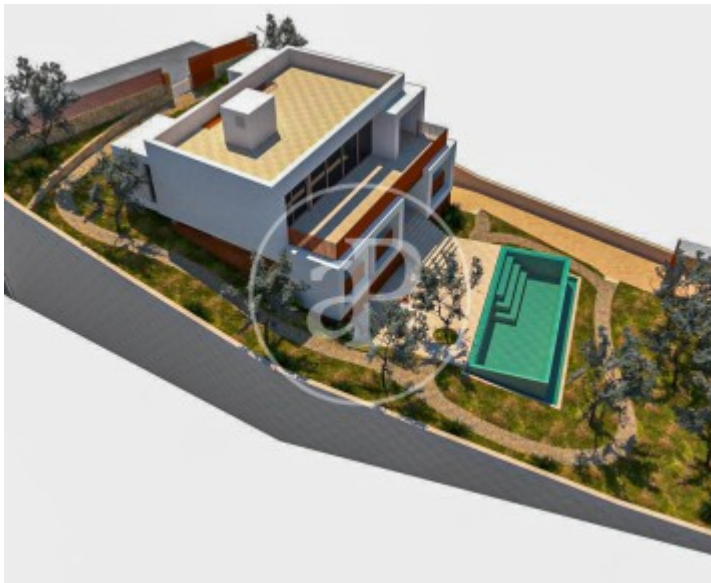


APROPERTIES
REAL ESTATE

Calle Unió 9
07001 Palma
T. 871 16 01 60
www.aproperties.es

Puerto de Pollença, Pollença

REF. VPM2310030



The information about any property is not binding to any offer or contract. Any verbal or written declaration made by aProperties with regards to the value or condition of the property should not be considered accurate or factual. The pictures make reference to some parts of the property at the times that they were taken. The areas, dimensions and distances that are given are approximate and should be checked by the client. The images are computer generated and are just an approximate indication of the real appearance of the property; these may change at any time. The information with regards to the property may also change at any time.



**For more information or
to make an appointment**

apropertiespalma@aproperties.es
Tel: 871 16 01 60
www.aproperties.es