

Puerto de Pollença, Pollença

REF. APM2404035



House for rent in Cala San Vicente

Features

Surface

200 m²

Bedrooms

4

Bathrooms

3

- ✓ Heating
- ✓ Boxroom
- ✓ Terrace
- ✓ Pool
- ✓ Furnished
- ✓ AACC
- ✓ Backyard
- ✓ Has parking

Price

2,500 €



This charming two-storey villa offers a generous 200 square metres of living space, carefully distributed to provide a cosy and functional atmosphere.

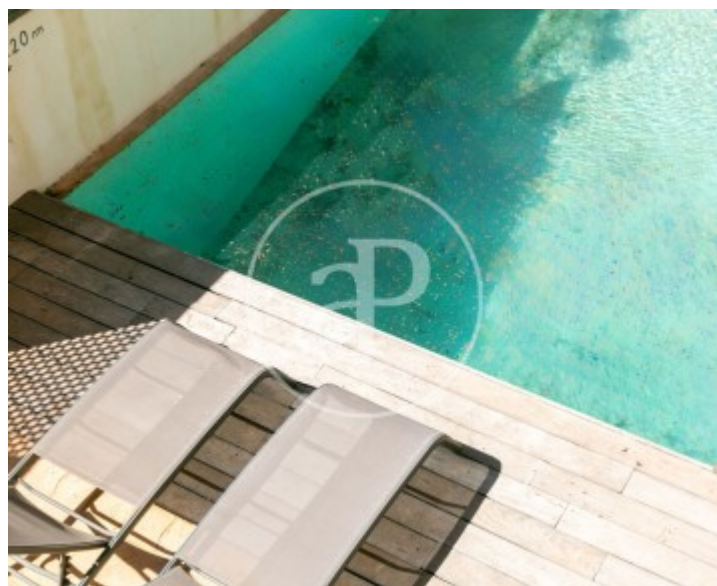
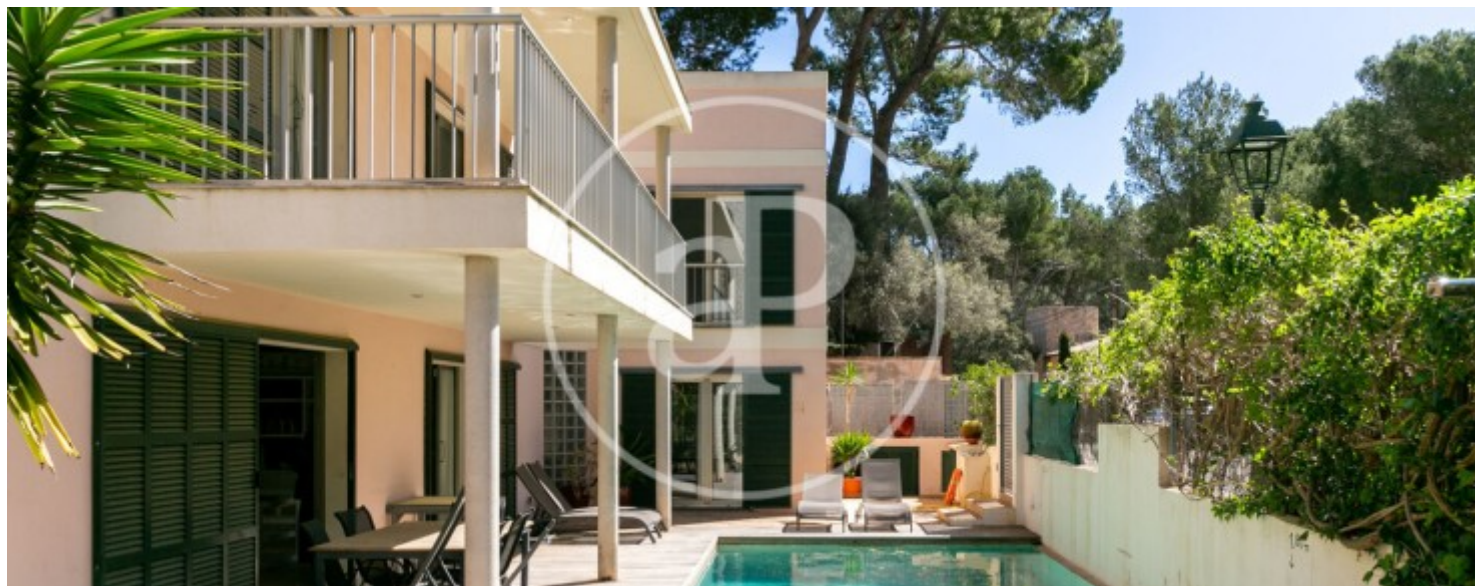
Upon entering, you will be greeted by a bright and spacious living room, decorated with exquisite taste and comfortably furnished to create a space for relaxation and conviviality. The kitchen, fully equipped with electrical appliances and plenty of storage space, invites you to culinary creativity and to enjoy unforgettable moments with your loved ones. The property has four spacious bedrooms, designed to guarantee the rest and privacy of its occupants. Three full bathrooms, elegantly decorated, offer comfort and

functionality for the whole family. Stepping outside, you will find a generous 400 square metre plot, where lush vegetation and manicured gardens create an oasis of tranquillity. The private swimming pool, surrounded by relaxation and entertainment areas, is the perfect place to cool off on sunny days and enjoy unforgettable moments with friends and family. In addition, the strategic location of this property gives you the opportunity to enjoy the proximity to the sea, with the beach just 5 minutes away, while immersing yourself in the peace and tranquillity of an exclusive and secure...

Contact us,
we will be happy to assist you,
to offer you more details and information.

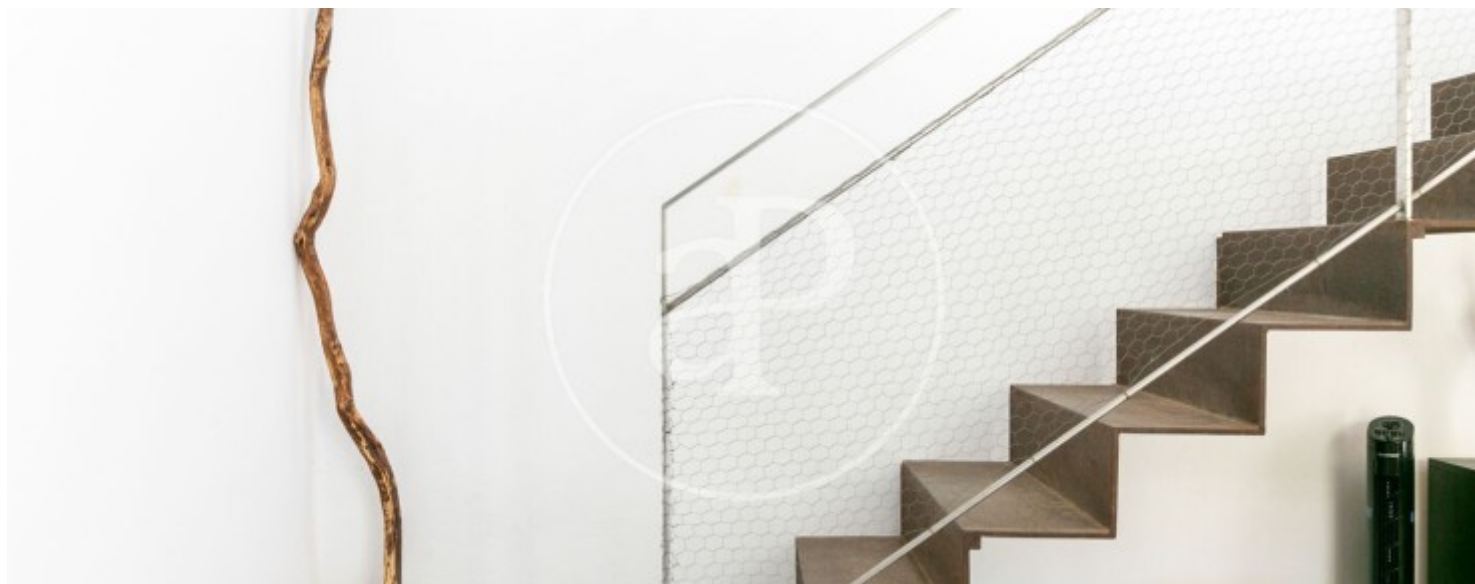
Puerto de Pollença, Pollença

REF. APM2404035



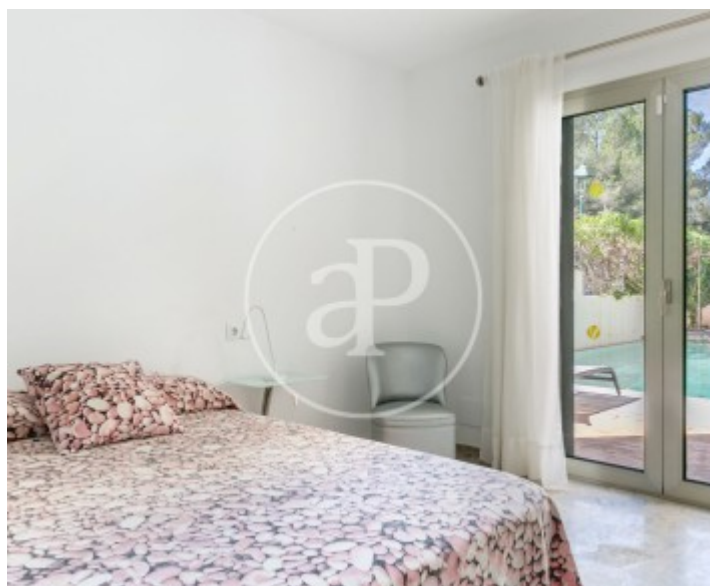
Puerto de Pollença, Pollença

REF. APM2404035



Puerto de Pollença, Pollença

REF. APM2404035



Puerto de Pollença, Pollença

REF. APM2404035



The information about any property is not binding to any offer or contract. Any verbal or written declaration made by aProperties with regards to the value or condition of the property should not be considered accurate or factual. The pictures make reference to some parts of the property at the times that they were taken. The areas, dimensions and distances that are given are approximate and should be checked by the client. The images are computer generated and are just an approximate indication of the real appearance of the property; these may change at any time. The information with regards to the property may also change at any time.



For **more information** or
to make an appointment

apropertiespalma@aproperties.es
Tel: 871 16 01 60
www.aproperties.es