

Puerto de Pollença, Pollença

REF. APMS2404017

# Apartment for rent in Port de Pollensa

## Features

- ✓ Heating
- ✓ AACC
- ✓ Pool
- ✓ Furnished
- ✓ Terrace
- ✓ Has parking

Surface

**110 m<sup>2</sup>**

Bedrooms

**3**

Bathrooms

**2**

Price

**3,950 €**



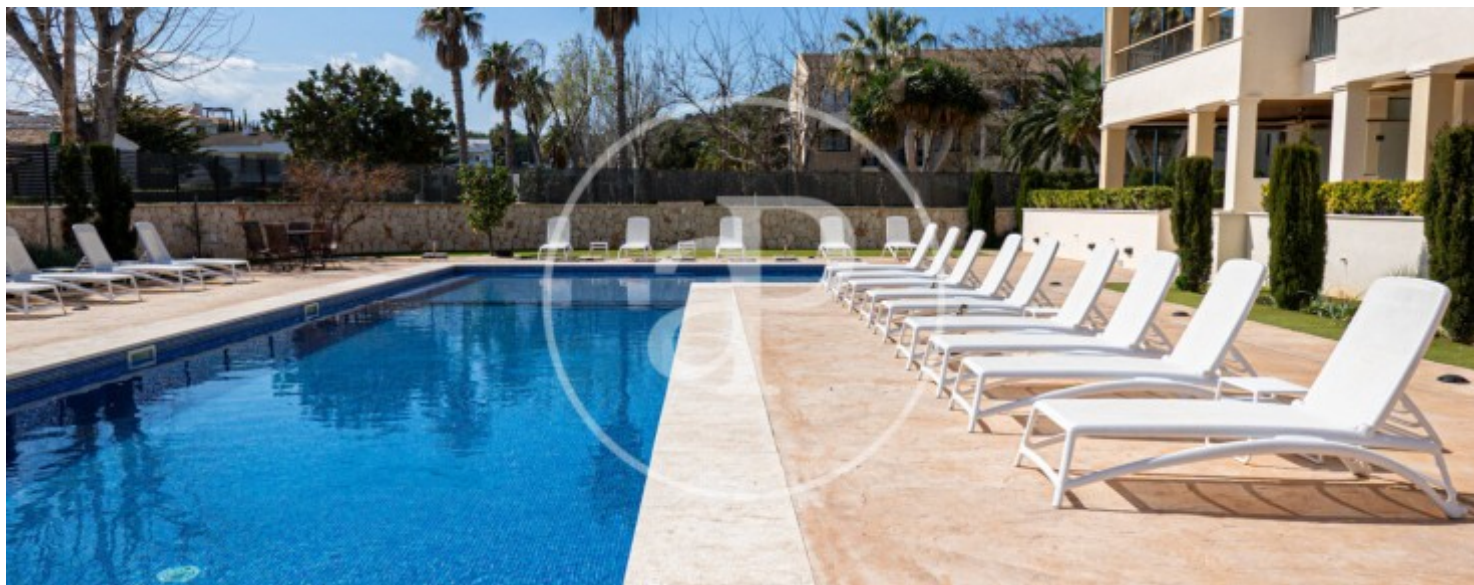
**ONLY FOR SHORT STAY (MINIMUM 32 NIGHTS) Flat with 3 bedrooms and 2 bathrooms 100 meters from the sea in one of the most exclusive areas of Puerto de Pollensa, Llenaire.**

It includes a storage room and a garage space, plus communal pool. The flat is distributed over 85 m2 plus 25m2 of private terrace in a new building (5 years old). All the rooms and the living room have ducted air conditioning (hot and cold). Each room has built-in wardrobe. It is fully equipped, ready to move in. The kitchen is fully equipped with all appliances. CHECK AVAILABILITY NOT AVAILABLE IN AUGUST CAN YOU IMAGINE LIVING HERE?

**Contact us,**  
we will be happy to assist you,  
to offer you more details and information.

Puerto de Pollença, Pollença

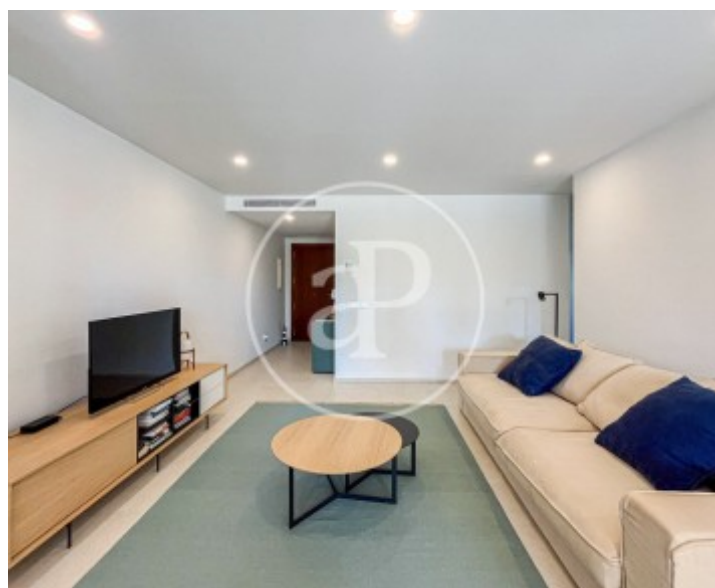
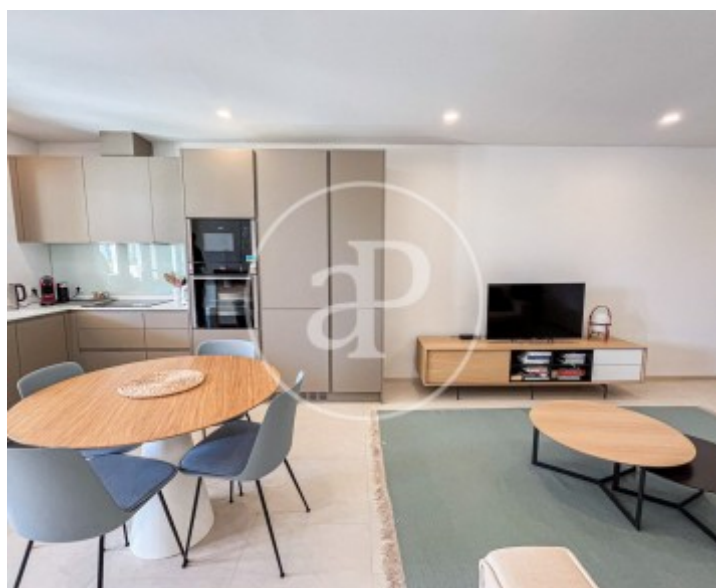
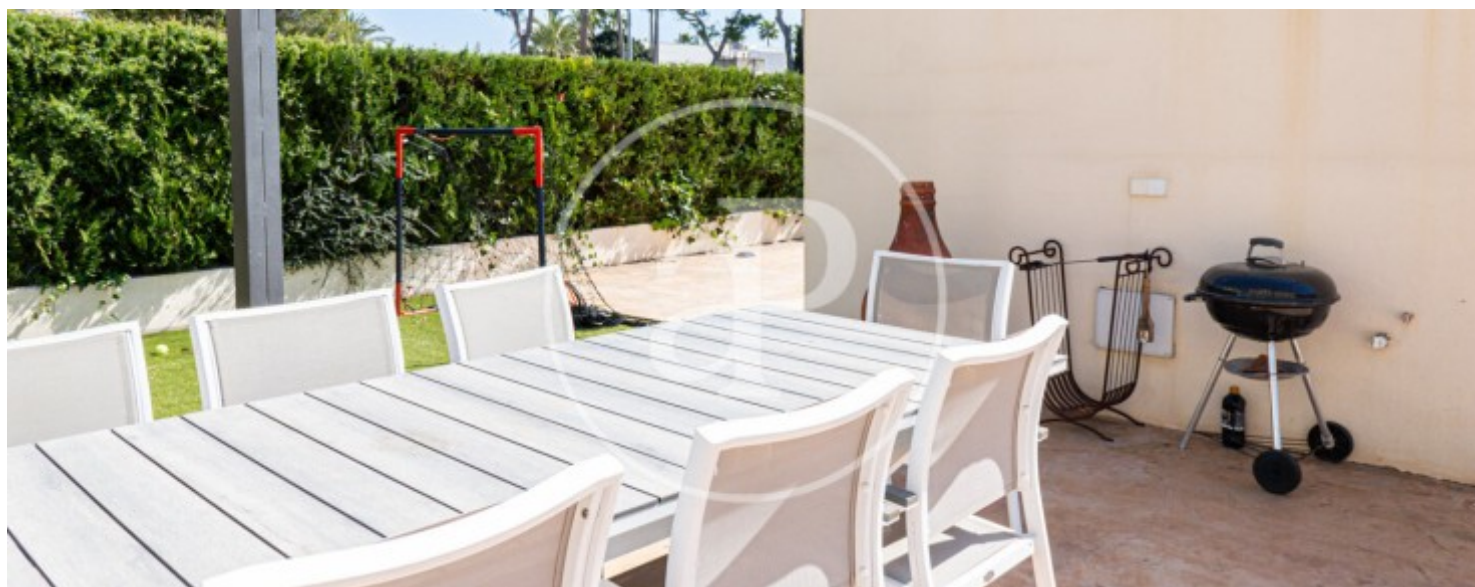
REF. APMS2404017





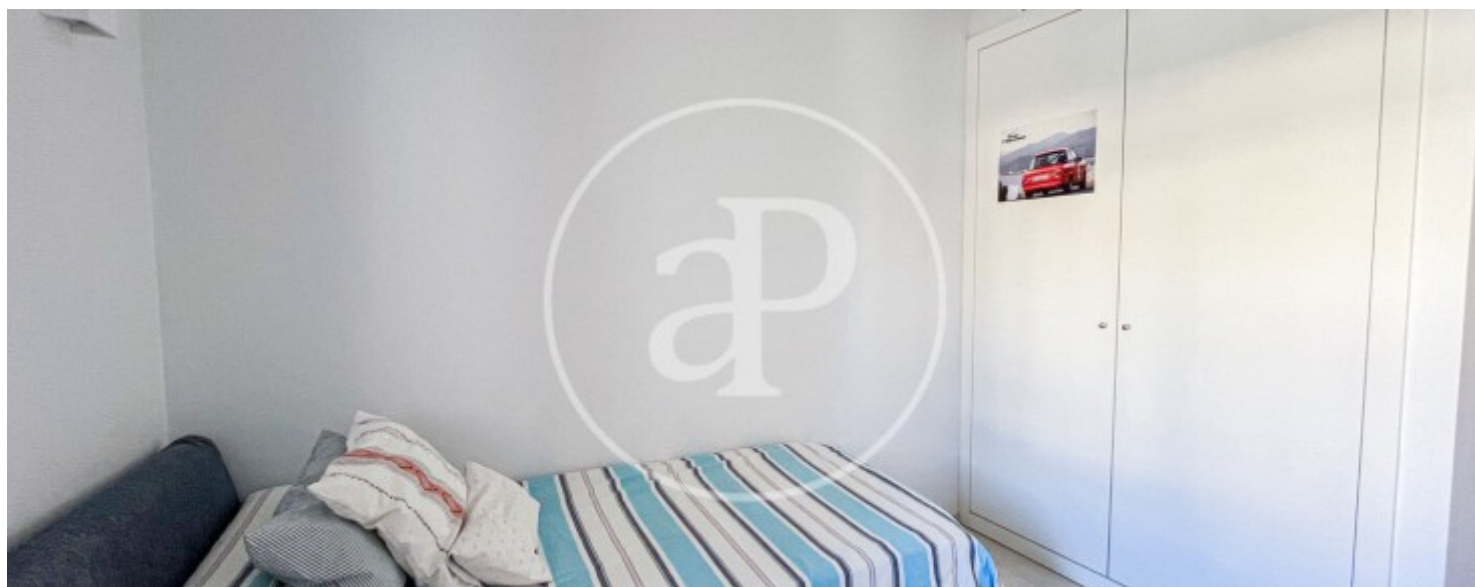
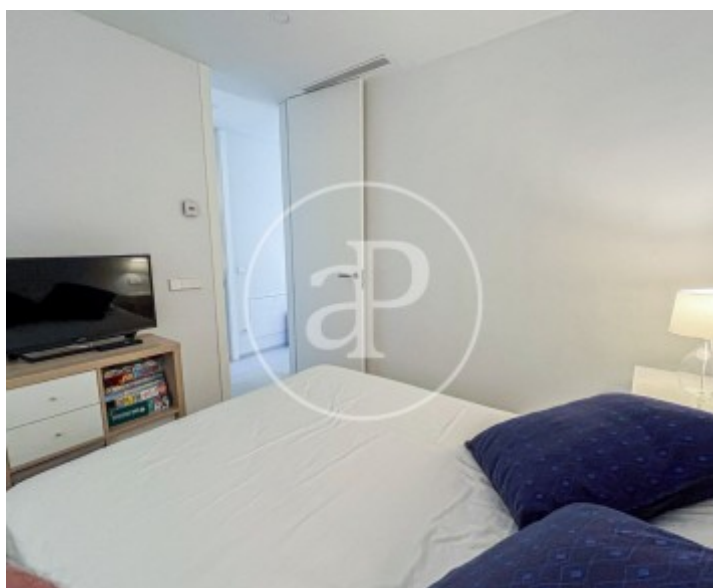
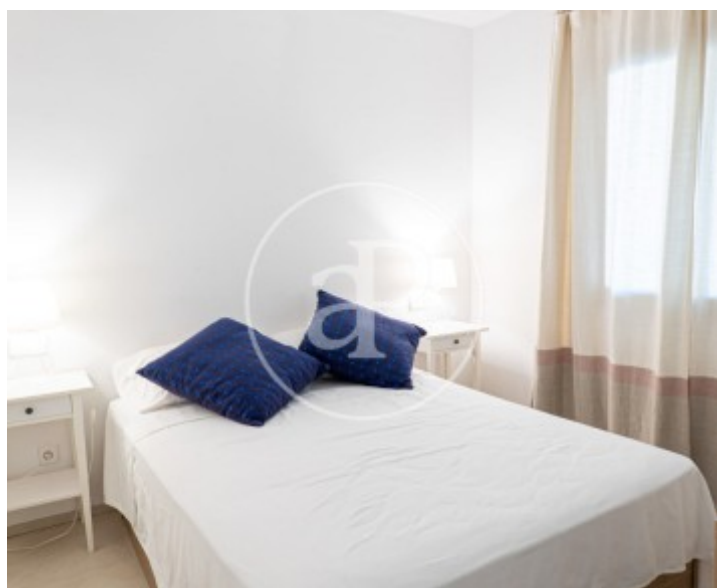
Puerto de Pollença, Pollença

REF. APMS2404017



Puerto de Pollença, Pollença

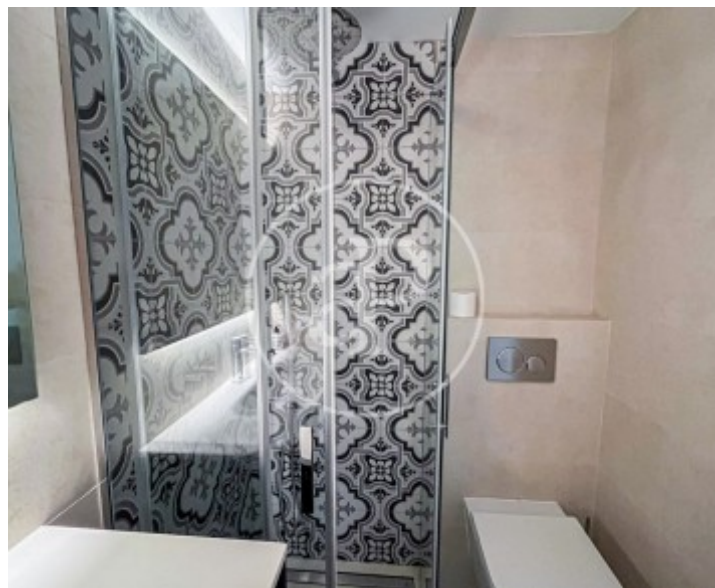
REF. APMS2404017





Puerto de Pollença, Pollença

REF. APMS2404017



The information about any property is not binding to any offer or contract. Any verbal or written declaration made by aProperties with regards to the value or condition of the property should not be considered accurate or factual. The pictures make reference to some parts of the property at the times that they were taken. The areas, dimensions and distances that are given are approximate and should be checked by the client. The images are computer generated and are just an approximate indication of the real appearance of the property; these may change at any time. The information with regards to the property may also change at any time.

For **more information** or  
to make an appointment

[apropertiespalma@aproperties.es](mailto:apropertiespalma@aproperties.es)  
Tel: 871 16 01 60  
[www.aproperties.es](http://www.aproperties.es)