

Pollença Centro, Pollença

REF. VPM2201006



# Magnificent RUSTIC FINCA Mallorcan style IN POLLENSA TO REFORM TO A LUXURY DESIGN

## Features

Surface

**250 m<sup>2</sup>**

Plot surface

**7,563 m<sup>2</sup>**

Bedrooms

**4**

Bathrooms

**2**

- ✓ Views
- ✓ Terrace
- ✓ Backyard
- ✓ Has parking

Price

**880,000 €**



**Magnificent Opportunity to reform again !! You can make your LUXURY design with more than 200 m2 of living space.**

Very good rustic property of typical Mallorquin style with extensive land of more than 7,500 m2. This property of construction of about 200 years ago, is ideal to carry out your luxury project, Thus, with the reform to new, maintain more than 200 useful m2 of housing with swimming pool, large park, all in the middle of vines, almond trees and lush vegetation. (we have photos of an illustrative project design) Access is by an easy access road, quiet, with privacy and few neighbors. Water: Town water, own legalized fresh water well and also 1 large

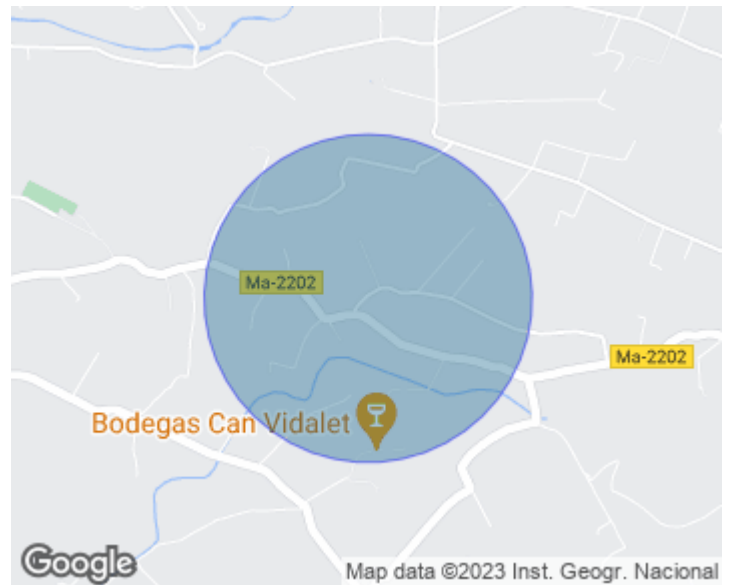
cistern Light: Gesa with new underground installation. Its location provides beautiful views of the mountains, and it is located in an excellent and quiet area of Pollensa just 5 minutes from: Center of Pollensa, Puerto Pollensa and Cala San Vicente. Do not hesitate to arrange a visit with the aProperties real estate agent in charge of this property.

**Contact us,**  
we will be happy to assist you,  
to offer you more details and information.



Pollença Centro, Pollença

REF. VPM2201006





Pollença Centro, Pollença

REF. VPM2201006







APROPERTIES  
REAL ESTATE

Calle Unió 9  
07001 Palma  
T. 871 16 01 60  
[www.aproperties.es](http://www.aproperties.es)

Pollença Centro, Pollença

REF. VPM2201006





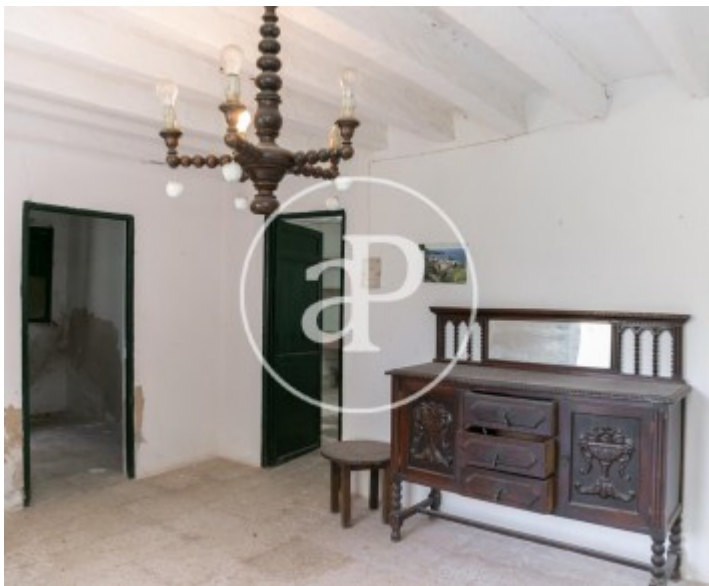


**APROPERTIES**  
REAL ESTATE

Calle Unió 9  
07001 Palma  
T. 871 16 01 60  
[www.aproperties.es](http://www.aproperties.es)

Pollença Centro, Pollença

REF. VPM2201006



The information about any property is not binding to any offer or contract. Any verbal or written declaration made by aProperties with regards to the value or condition of the property should not be considered accurate or factual. The pictures make reference to some parts of the property at the times that they were taken. The areas, dimensions and distances that are given are approximate and should be checked by the client. The images are computer generated and are just an approximate indication of the real appearance of the property; these may change at any time. The information with regards to the property may also change at any time.



For **more information** or  
to make an appointment

[apropertiespalma@aproperties.es](mailto:apropertiespalma@aproperties.es)  
Tel: 871 16 01 60  
[www.aproperties.es](http://www.aproperties.es)