

Pollença Centro, Pollença

REF. APMS2310045

Villa for rent in Pollensa

Features

- ✓ Views
- ✓ Heating
- ✓ Furnished
- ✓ Boxroom
- ✓ AACC
- ✓ Terrace
- ✓ Backyard
- ✓ Pool
- ✓ Security
- ✓ Has parking

Surface

600 m²

Bedrooms

6

Bathrooms

7



Price

10,000 €

This is a spectacular 600 square metre luxury villa set in a beautiful olive grove.

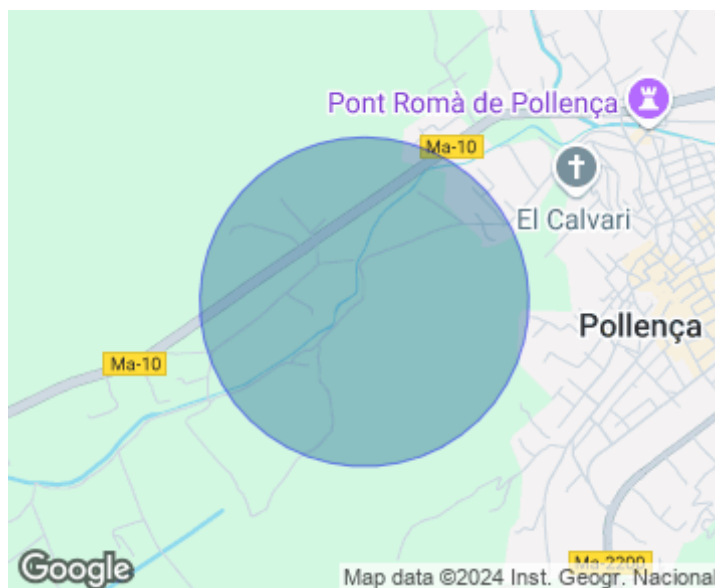
Entering the house, we find a spacious and bright living-dining room, bathed in natural light thanks to its large windows, which allow you to enjoy the panoramic views and the swimming pool. With 4 double bedrooms, 3 of them with en-suite bathrooms and a guest bathroom, it offers an exceptional combination of comfort and style. Separated from the main living area by a majestic olive tree, there is a room that houses an elegant office with a sofa bed and en-suite bathroom, providing exceptional flexibility in the use of this space. Descending to the lower part of the

house, there is another bedroom with en-suite bathroom and a small kitchen, which can be used as a guest or staff flat and just one level below the pool there is an additional room, with a glass window allowing underwater views, adding a touch of magic to the property, with a table tennis table, sofa bed and bathroom. In addition to these features, the property is distinguished by its advanced sound system that encompasses the entire house, creating an exceptional listening experience in every corner. It also features robotised skylights that allow complete control of the natural light that...

Contact us,
we will be happy to assist you,
to offer you more details and information.

Pollença Centro, Pollença

REF. APMS2310045



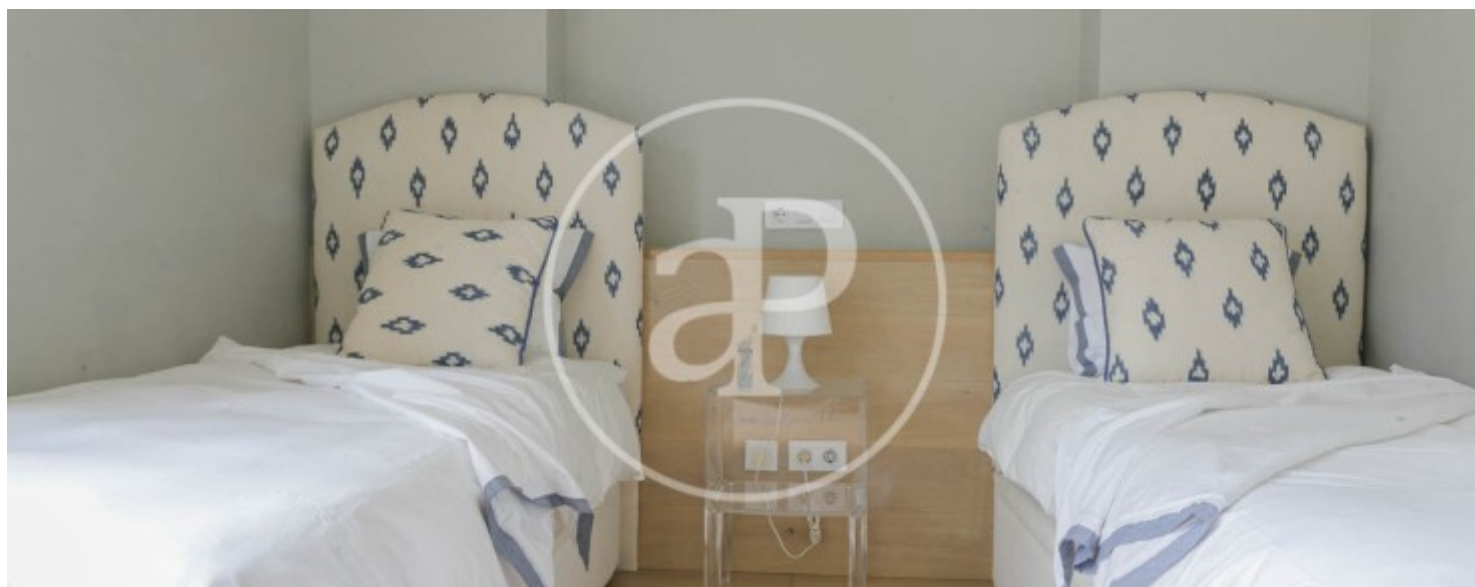
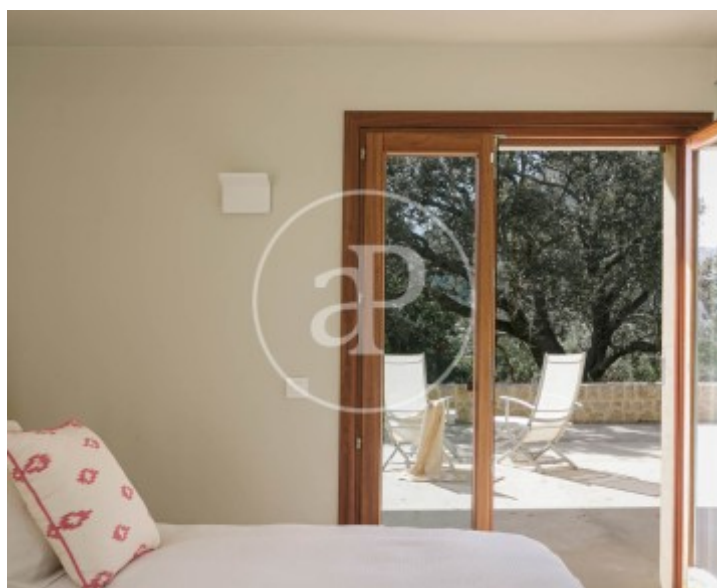
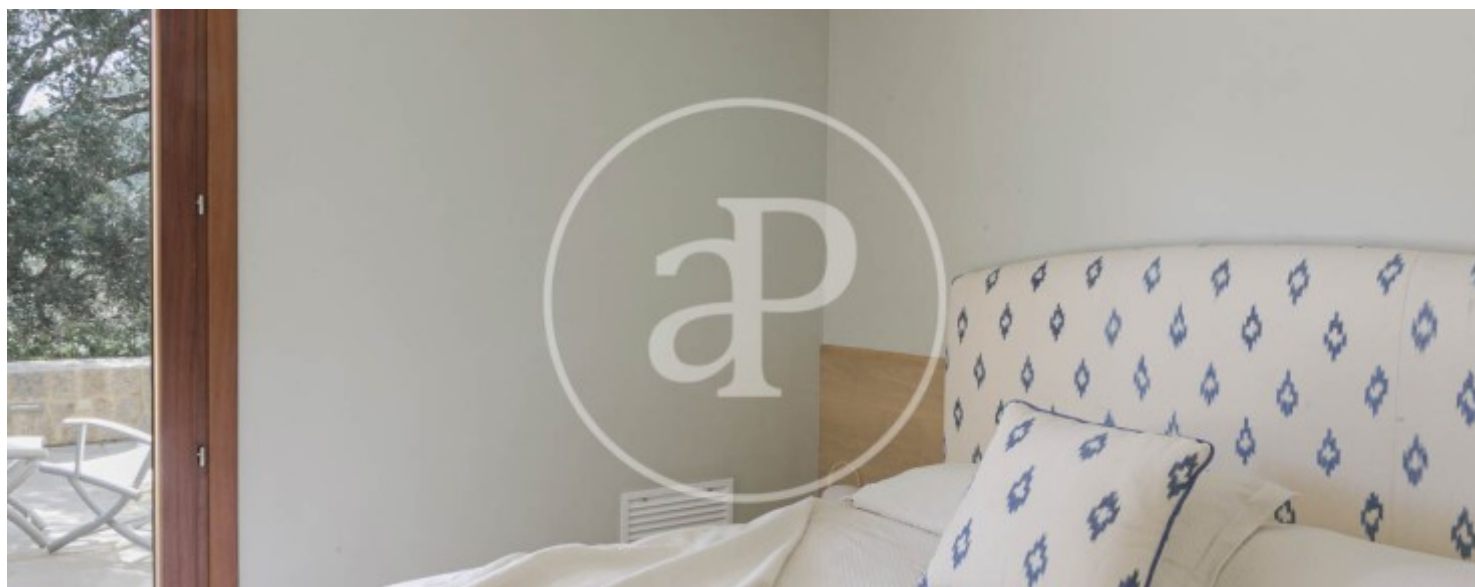
Pollença Centro, Pollença

REF. APMS2310045



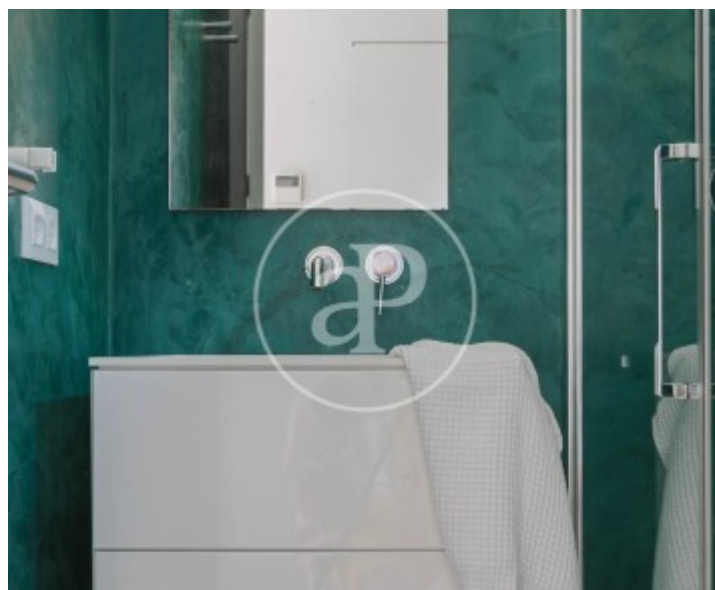
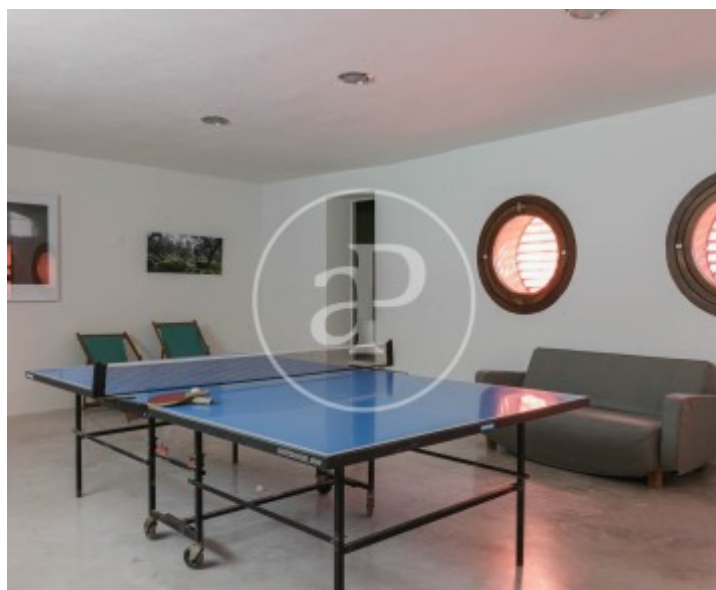
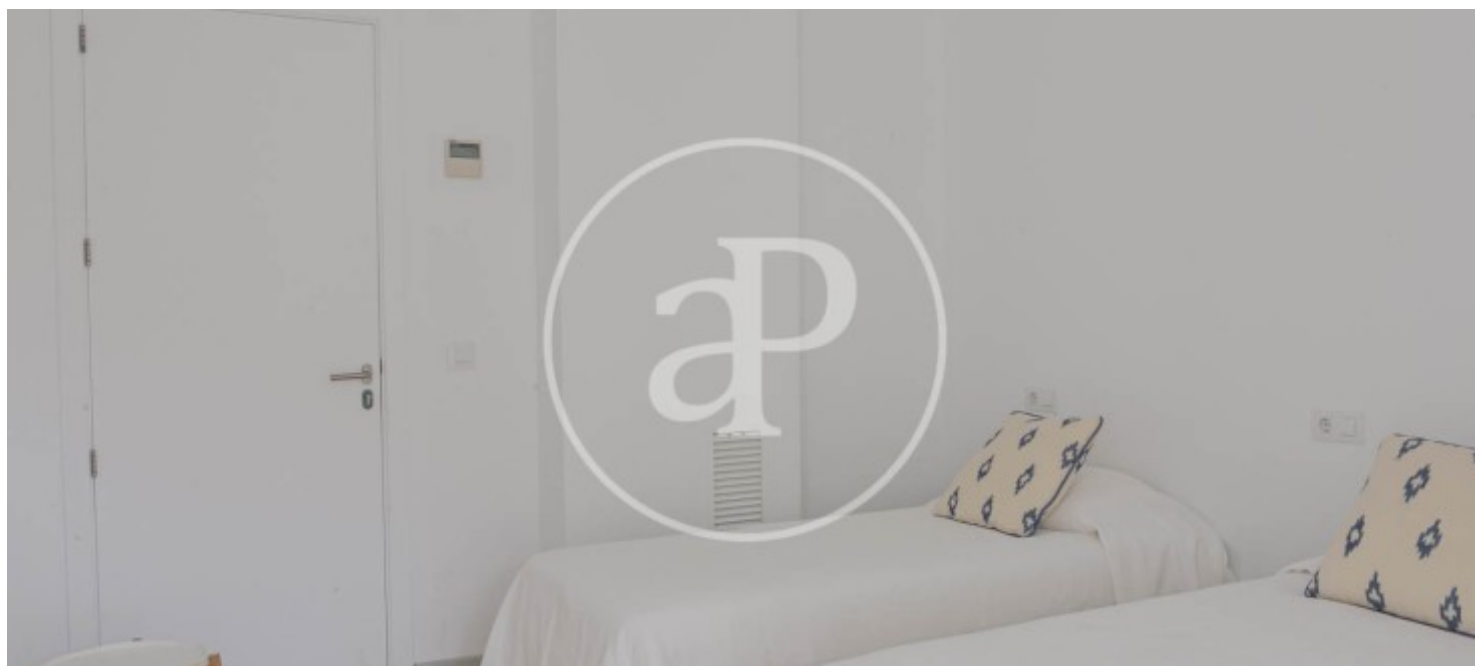
Pollença Centro, Pollença

REF. APMS2310045



Pollença Centro, Pollença

REF. APMS2310045



The information about any property is not binding to any offer or contract. Any verbal or written declaration made by aProperties with regards to the value or condition of the property should not be considered accurate or factual. The pictures make reference to some parts of the property at the times that they were taken. The areas, dimensions and distances that are given are approximate and should be checked by the client. The images are computer generated and are just an approximate indication of the real appearance of the property; these may change at any time. The information with regards to the property may also change at any time.

For **more information** or
to make an appointment

apropertiespalma@aproperties.es
Tel: 871 16 01 60
www.aproperties.es