

Pollença Centro, Pollença

REF. VPM2511005

Villa for sale in Pollensa

Features

- ✓ Views
- ✓ Heating
- ✓ Furnished
- ✓ Boxroom
- ✓ AACC
- ✓ Terrace
- ✓ Backyard
- ✓ Pool
- ✓ Gym
- ✓ Has parking

Price
5,200,000 €

Surface
390 m²

Plot surface
10,000 m²

Bedrooms
5

Bathrooms
6



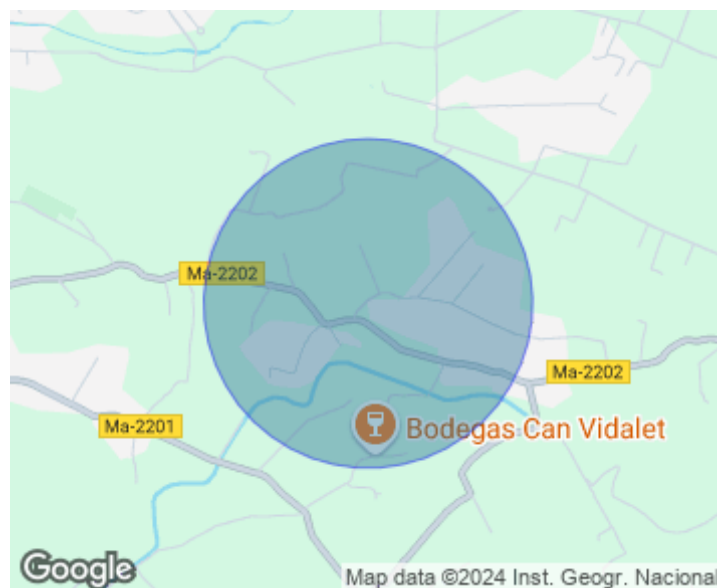
Stunning Luxury Villa on a 10,000 m² Plot: Light, Space, and Serenity Set in an environment of absolute privacy and tranquility, this exclusive detached villa combines elegance, comfort, and contemporary design in perfect harmony. Distributed across the ground floor and basement, the property stands out for its spaciousness, natural light, and refined architecture. Upon entering, a welcoming open-plan living and dining area filled with natural light connects seamlessly with a bespoke designer kitchen, fully equipped with high-end appliances. The smart layout offers generous storage and direct access to the magnificent garden, where open views and an atmosphere of unmatched peace await. The sleeping area includes five large en-suite bedrooms, each featuring premium-quality bathrooms, direct garden

access, and expansive windows that flood the rooms with light, creating a warm and inviting ambiance. The home is equipped with underfloor heating and an advanced home automation system, ensuring maximum comfort and energy efficiency. Outdoors, an oasis awaits: a spectacular swimming pool surrounded by beautifully landscaped gardens and an elegant barbecue area with an oven and fireplace — perfect for unforgettable moments in the open air. A truly unique residence offering exclusivity, wellbeing, and a deep connection with nature — ideal for those seeking a one-of-a-kind...

Contact us,
we will be happy to assist you,
to offer you more details and information.

Pollença Centro, Pollença

REF. VPM2511005



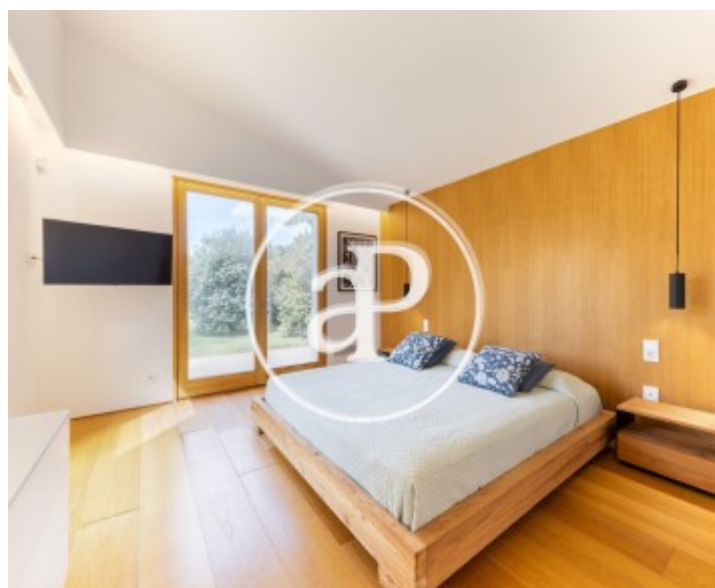
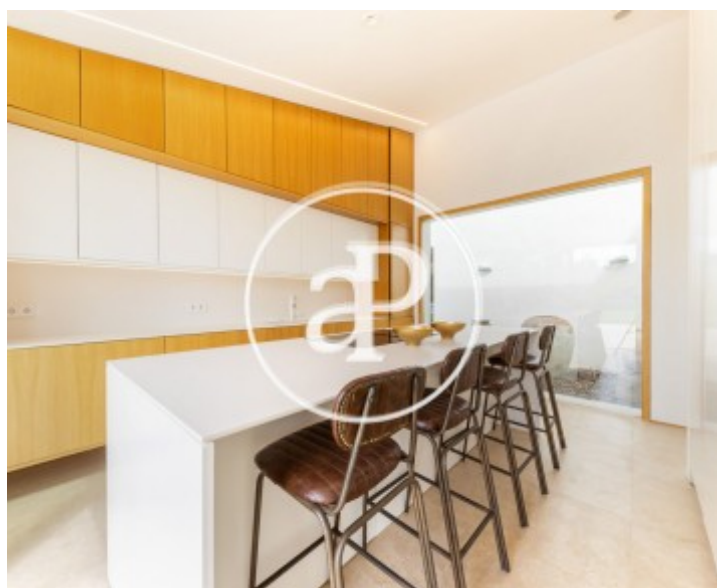
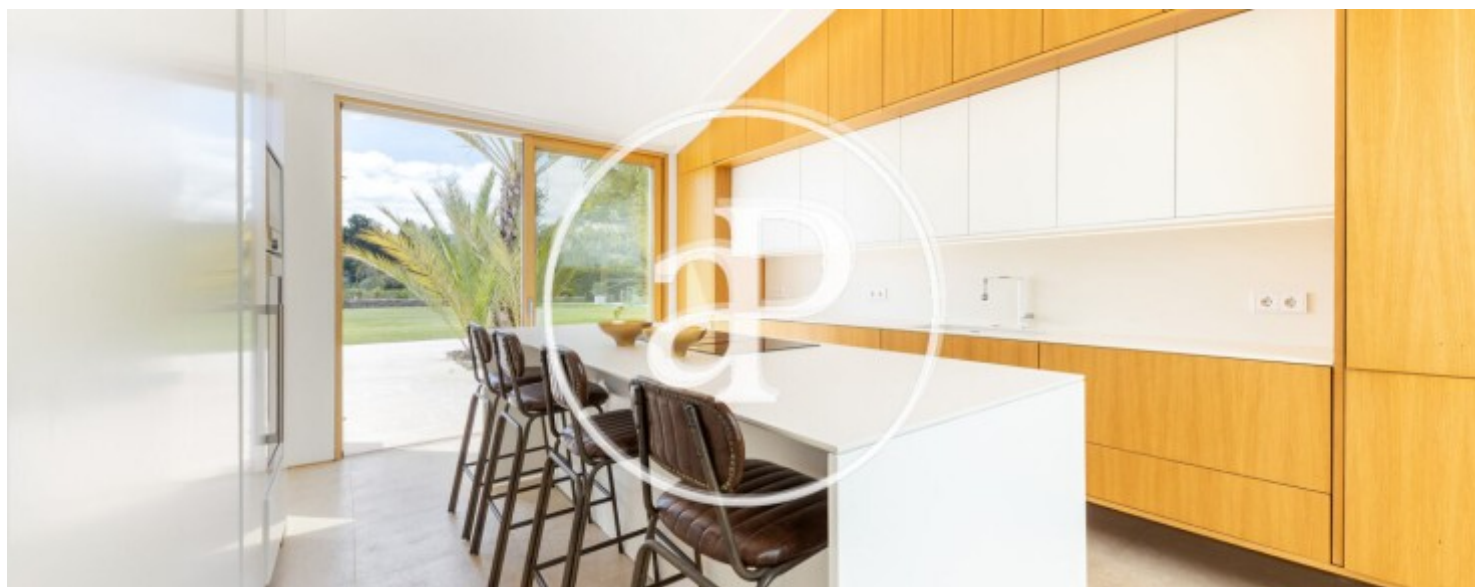
Pollença Centro, Pollença

REF. VPM2511005



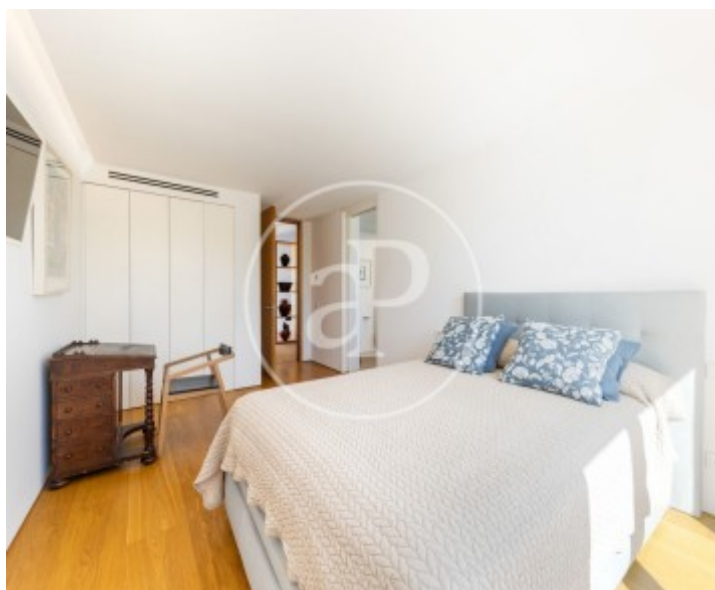
Pollença Centro, Pollença

REF. VPM2511005



Pollença Centro, Pollença

REF. VPM2511005



The information about any property is not binding to any offer or contract. Any verbal or written declaration made by aProperties with regards to the value or condition of the property should not be considered accurate or factual. The pictures make reference to some parts of the property at the times that they were taken. The areas, dimensions and distances that are given are approximate and should be checked by the client. The images are computer generated and are just an approximate indication of the real appearance of the property; these may change at any time. The information with regards to the property may also change at any time.

For **more information** or
to make an appointment

apropertiespalma@aproperties.es
Tel: 871 16 01 60
www.aproperties.es