



Pollença Centro, Pollença

REF. APM2412001

Apartment for rent in Puerto de Pollensa

Features

- ✓ Views
- ✓ Terrace
- ✓ Backyard
- ✓ Pool
- ✓ Lift
- ✓ Has parking

Surface

146 m²

Bedrooms

3

Bathrooms

2

Price

1,650 €



In the quiet urbanization of Bellresguard in Puerto de Pollensa, we find this penthouse of 146 sqm with a solarium with very pleasant views to the green areas of the urbanization.

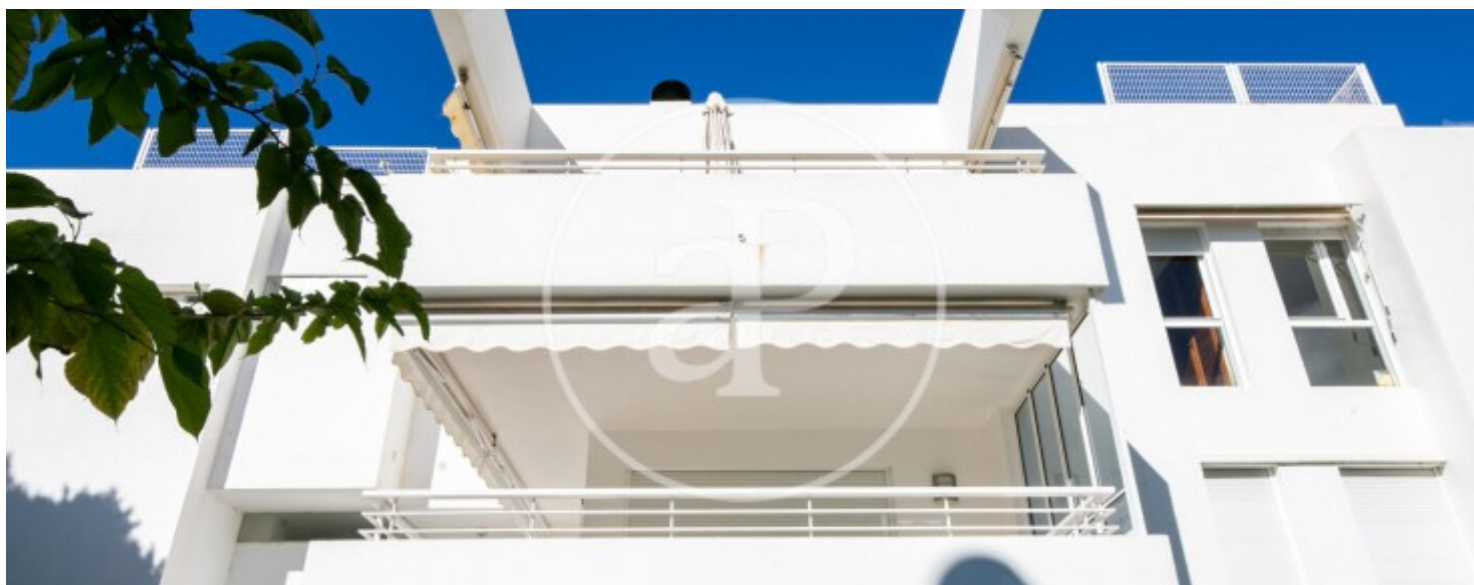
From the entrance door to the property we access a hall where we find a spacious and bright living-dining room with fireplace and access to a terrace of 22 sqm with unobstructed views to the communal areas of the complex. In the same area we find the fitted kitchen with a separate laundry area. Through a spiral staircase we have access to the upper part of the house where we find a space to put a small office and a solarium terrace of 140 sqm ideal to put a barbecue. In the sleeping area

there are three exterior double bedrooms with fitted wardrobes and two bathrooms. The master bedroom has an en suite bathroom with bathtub. The property stands out for its great luminosity, it has an outdoor parking space in the same complex and large garden areas with different swimming pools, terraces for sunbathing and several areas with natural shade thanks to its vegetation. Excellent location, only 200 metres from the Illador beach and close to well-known beaches such as the Formentor beach or the beaches of Muro. The expenses of community and IBI are included in the rental price, the...

Contact us,
we will be happy to assist you,
to offer you more details and information.

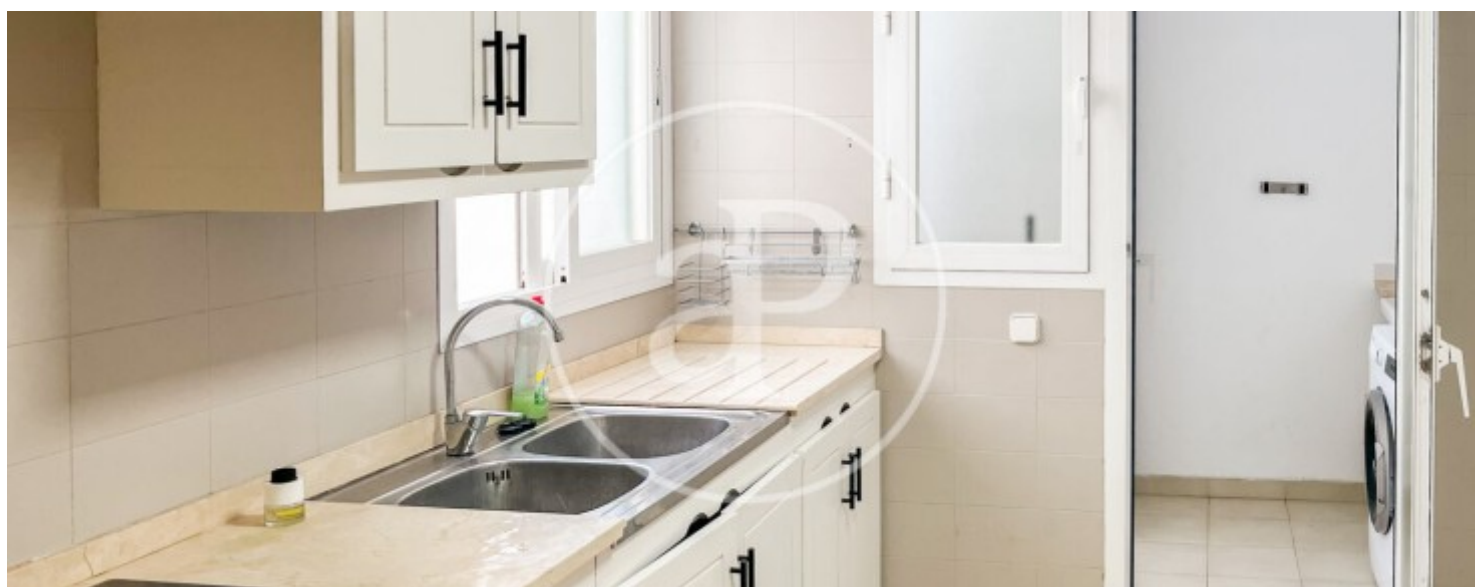
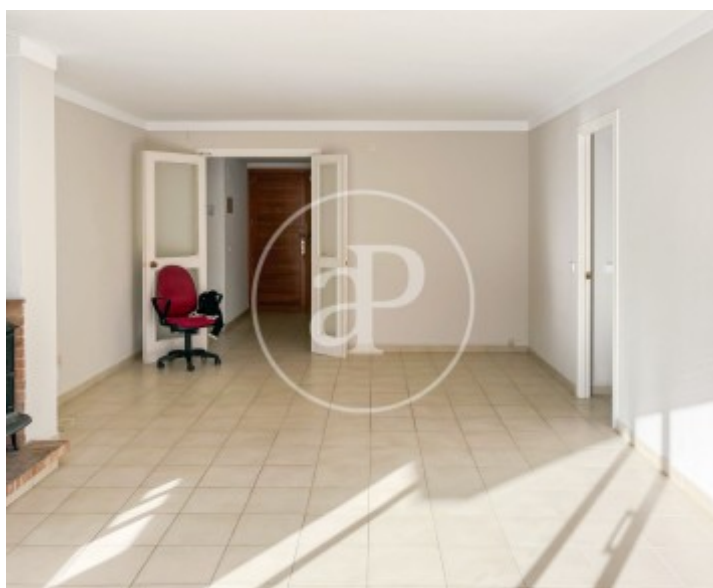
Pollença Centro, Pollença

REF. APM2412001



Pollença Centro, Pollença

REF. APM2412001



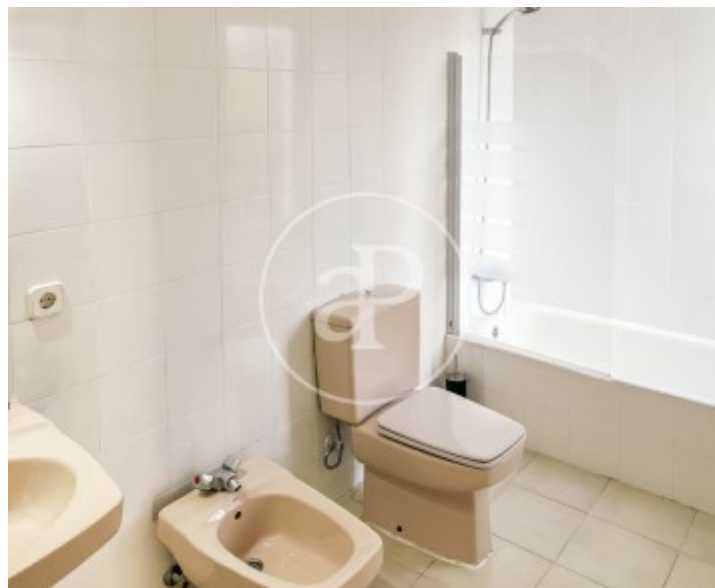
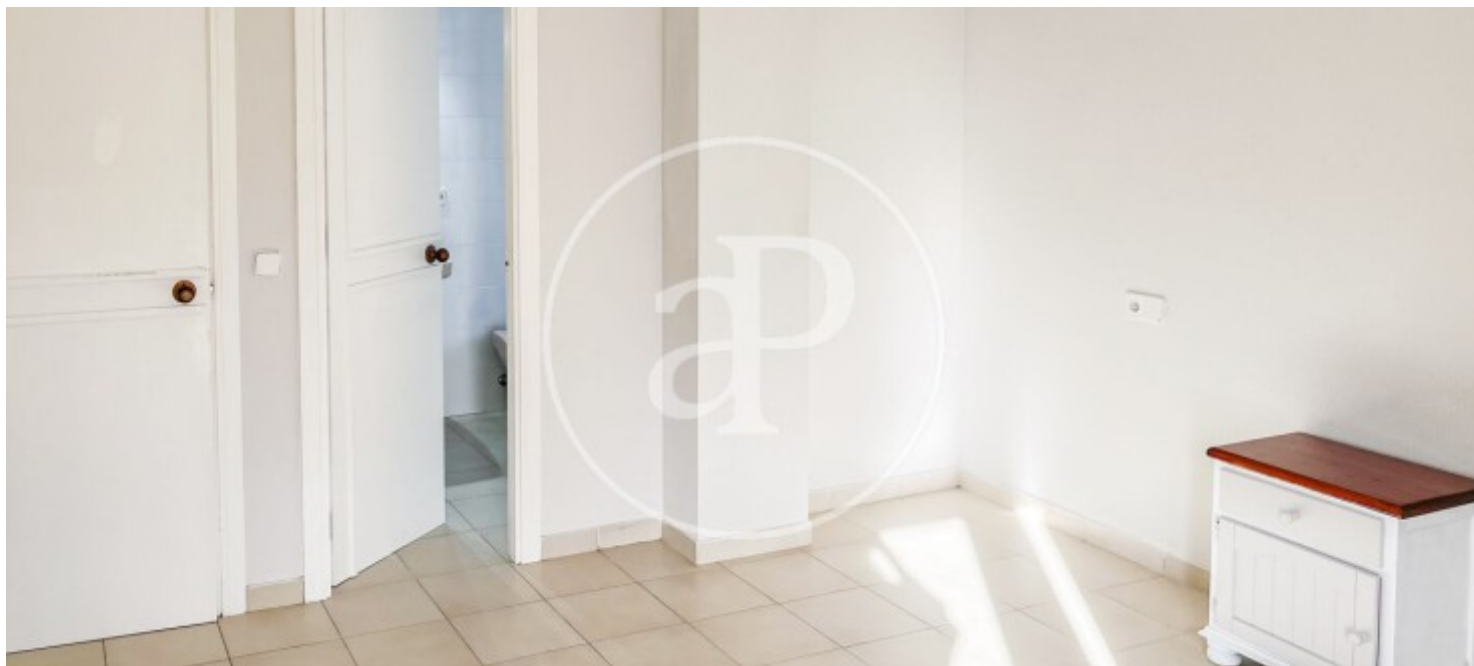
Pollença Centro, Pollença

REF. APM2412001



Pollença Centro, Pollença

REF. APM2412001



The information about any property is not binding to any offer or contract. Any verbal or written declaration made by aProperties with regards to the value or condition of the property should not be considered accurate or factual. The pictures make reference to some parts of the property at the times that they were taken. The areas, dimensions and distances that are given are approximate and should be checked by the client. The images are computer generated and are just an approximate indication of the real appearance of the property; these may change at any time. The information with regards to the property may also change at any time.

For **more information** or
to make an appointment

apropertiespalma@aproperties.es
Tel: 871 16 01 60
www.aproperties.es