

Pobla de Farnals

REF. AV2605030

Flat for rent with Terrace in Pobla de Farnals

Features

- ✓ Heating
- ✓ AACC
- ✓ Pool
- ✓ Has parking
- ✓ Furnished
- ✓ Terrace
- ✓ Lift

Price

1,400 €

Surface

90 m²

Bedrooms

2

Bathrooms

2



LONG-TERM RENTAL, NOT FOR HOLIDAY USE aProperties is pleased to present this cozy 2-bedroom apartment located on Pobla de Farnals beach.

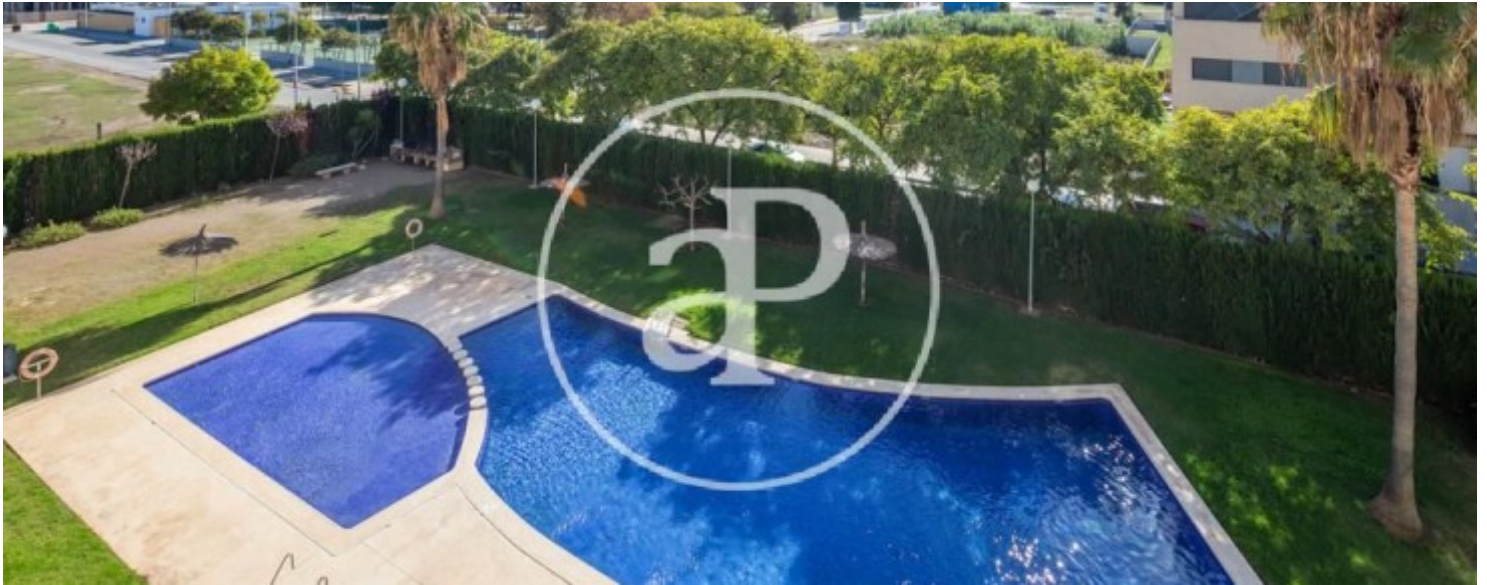
The property has been fully renovated and offers 90 m². The kitchen is fully equipped with all appliances, and the apartment features a spacious and very bright living-dining room. The property has centralized air conditioning and a south-facing orientation with wonderful views. The apartment is located within a residential complex with a swimming pool, green areas, and parking. The Mediterranean Sea, promenade, marina, gastronomy, family leisure, health center, pharmacies, supermarkets... define the main features of

Pobla de Farnals Beach. The North Beach is located north of the Pobla de Farnals marina, a small but well-equipped port that includes a sailing school and companies dedicated to yacht and boat rentals. The beach, approximately 220 meters long and 70 meters wide, stands out for the quality of its waters and the golden color of its fine sand. This wonderful setting provides the perfect environment to enjoy the Mediterranean Sea in all its splendor. Belonging to the municipality of Pobla de Farnals, the beach area is connected to the town through a bus service, as well as pedestrian paths and...

Contact us,
we will be happy to assist you,
to offer you more details and information.

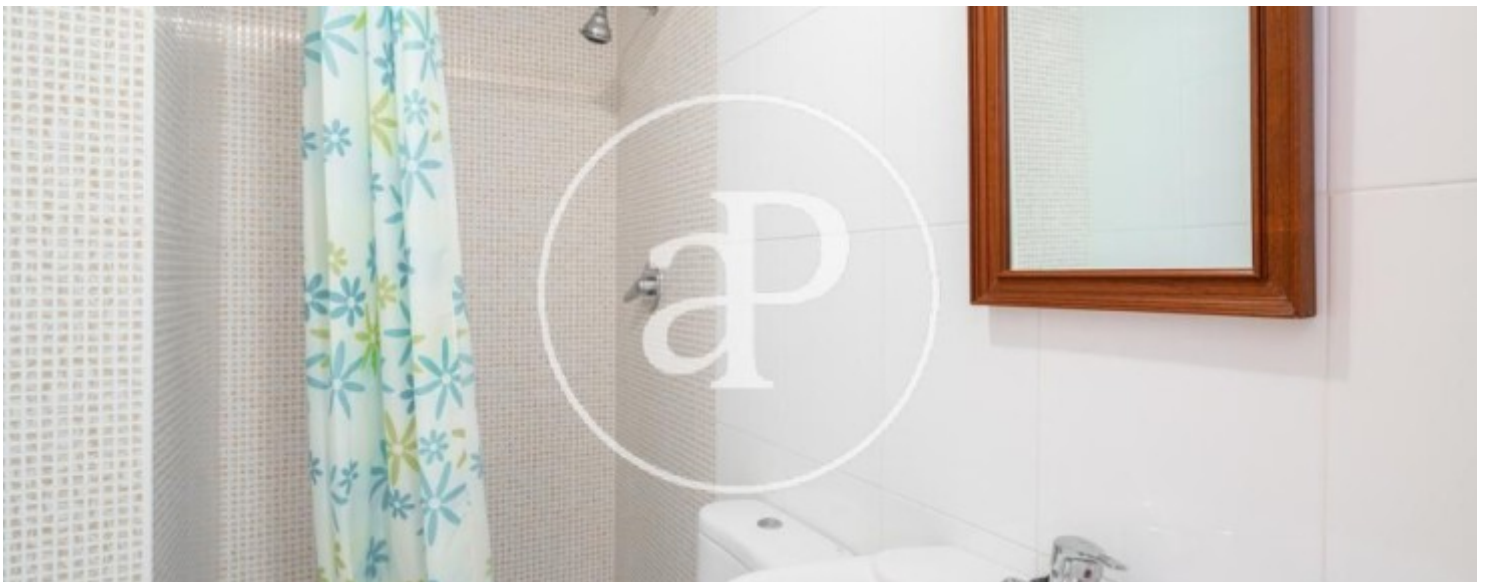
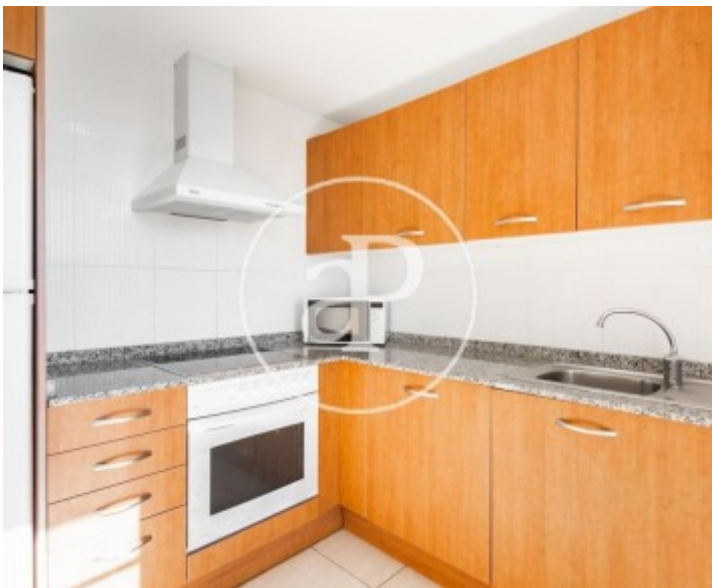
Pobla de Farnals

REF. AV2605030



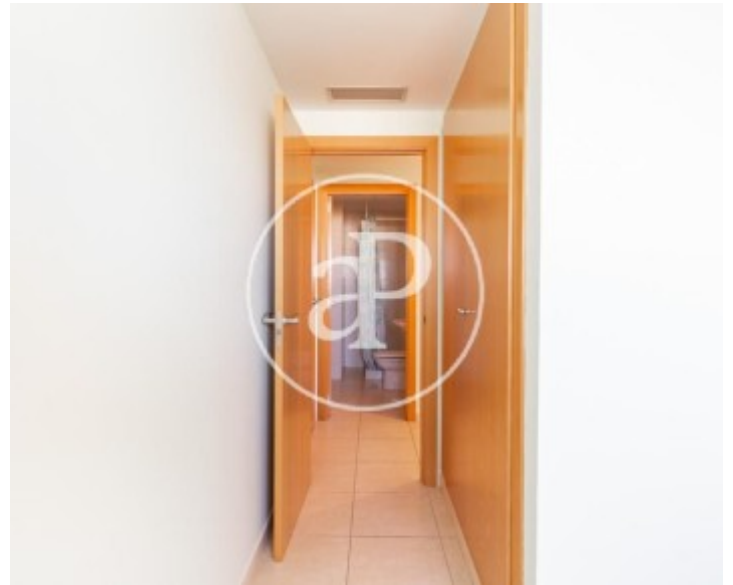
Pobla de Farnals

REF. AV2605030



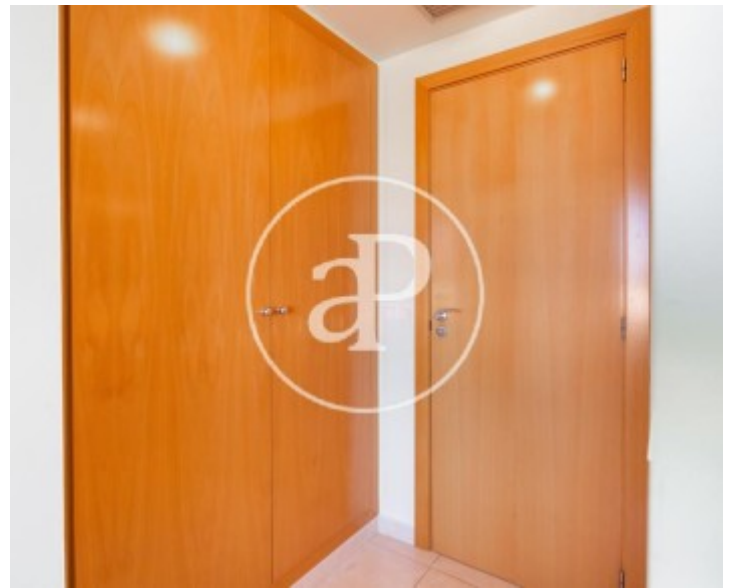
Pobla de Farnals

REF. AV2605030



Pobla de Farnals

REF. AV2605030



The information about any property is not binding to any offer or contract. Any verbal or written declaration made by aProperties with regards to the value or condition of the property should not be considered accurate or factual. The pictures make reference to some parts of the property at the times that they were taken. The areas, dimensions and distances that are given are approximate and should be checked by the client. The images are computer generated and are just an approximate indication of the real appearance of the property; these may change at any time. The information with regards to the property may also change at any time.

For **more information** or
to make an appointment

apropertiesvalencia@aproperties.es
Tel: 96 128 59 65
www.aproperties.es