



Burriana, Plana Baja

REF. VV2502017

House for Sale in Burriana

Features

- ✓ Views
- ✓ Boxroom
- ✓ Terrace
- ✓ Has parking
- ✓ Heating
- ✓ AACC
- ✓ Backyard

Price

1,300,000 €

Surface

292 m²

Plot surface

600 m²

Bedrooms

5

Bathrooms

4



aProperties presents this property with a plot of approximately 600 m² and 292 m² built, distributed over two floors and with a magnificent east orientation.

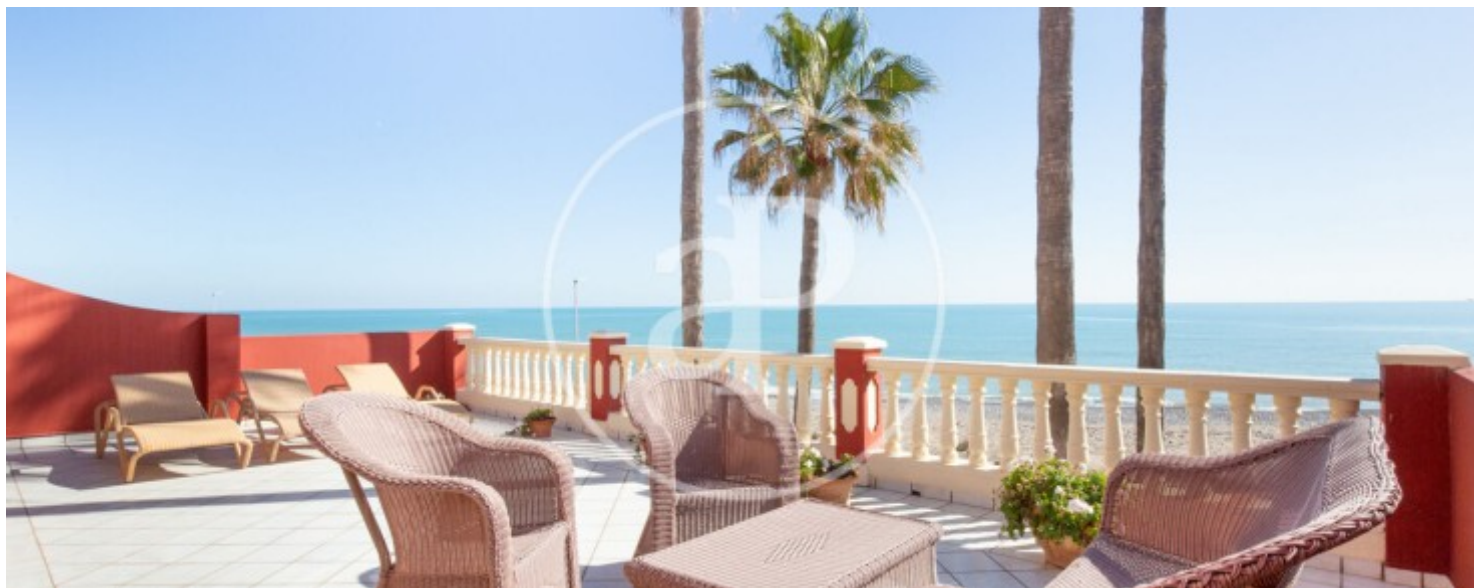
Upon entering the property, we are greeted by a charming and spacious garden-terrace area, ideal for enjoying the luxury of the breeze and the sound of the sea. Next, we find a spacious and luminous glazed porch-terrace, divided into two areas and with very high ceilings. As it is enclosed with high quality glass, this area can be enjoyed all year round. Next, we access a majestic living-dining room distributed in three rooms, with ceilings of more than 5 metres and a fireplace. The main floor is

completed with a large kitchen-diner, with space for a table for daily use, a double bedroom and a complete bathroom. Next to the kitchen, on the west side of the house, we find a splendid terrace with access to the garden, barbecue, laundry room and storage room, all built, overlooking the fields and what is planned as the future tourist and residential complex with golf course PAI San Gregorio 09. This area enjoys marvellous views of the Sierra del Espadán. On the first floor there are four double bedrooms and two bathrooms (one of them en suite). All four bedrooms have access to...

Contact us,
we will be happy to assist you,
to offer you more details and information.

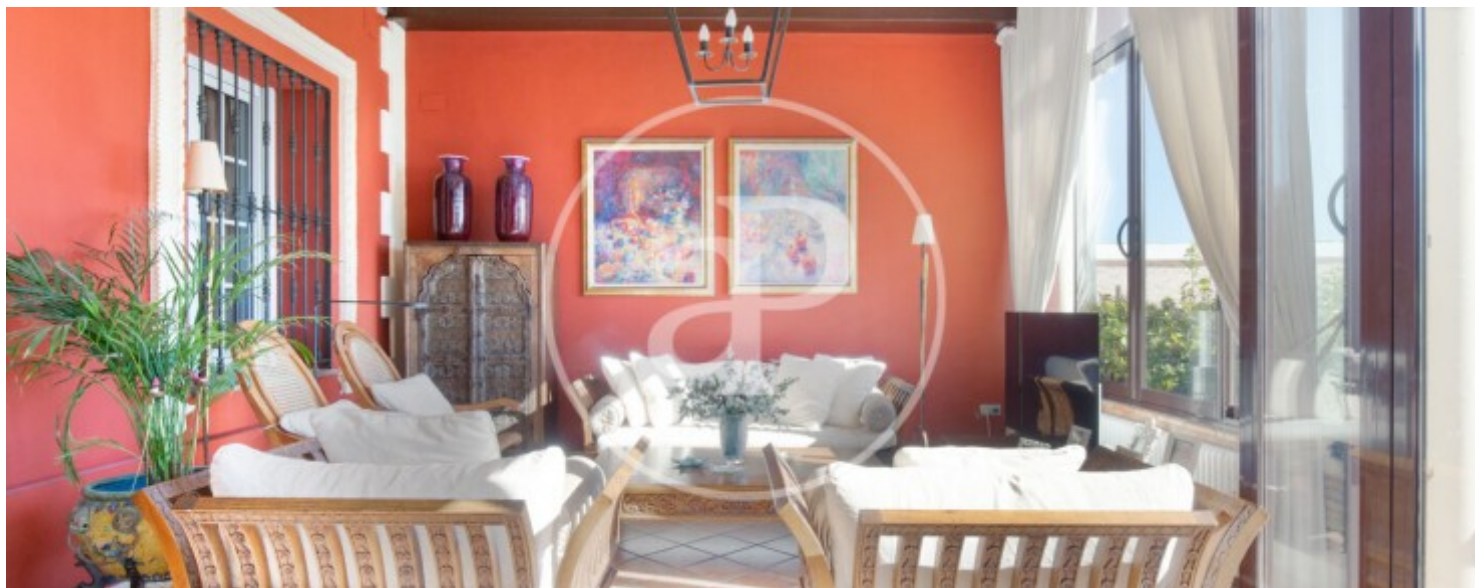
Burriana, Plana Baja

REF. VV2502017



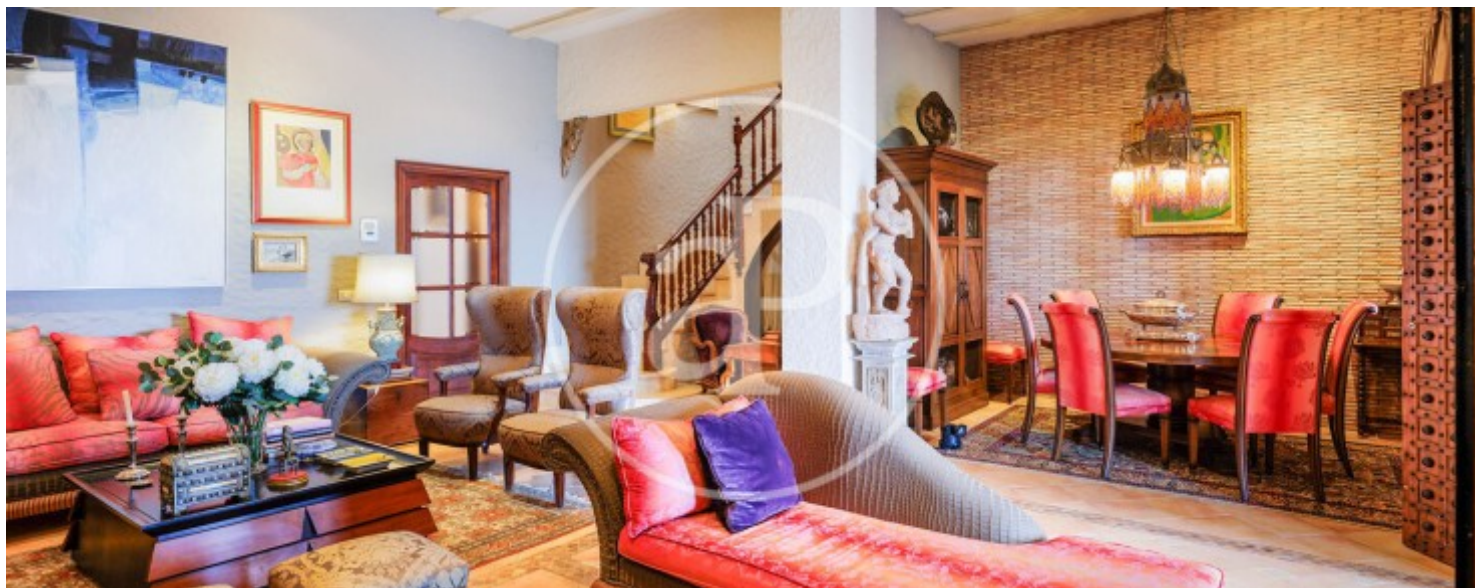
Burriana, Plana Baja

REF. VV2502017



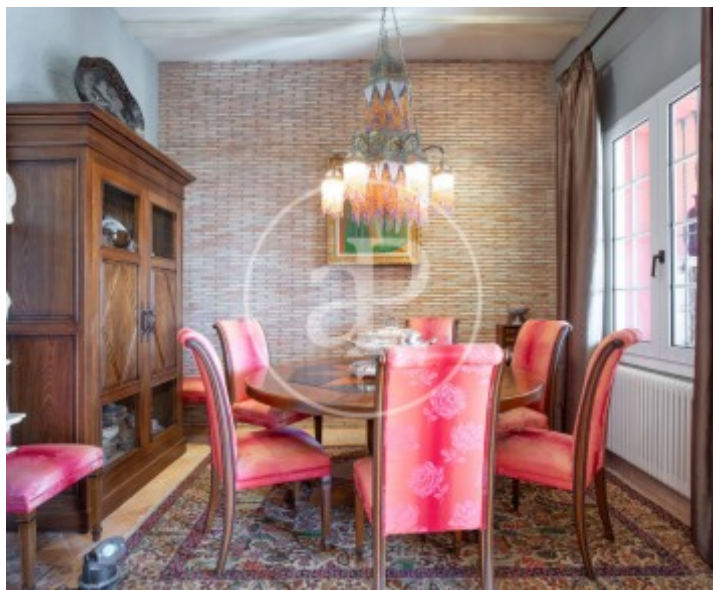
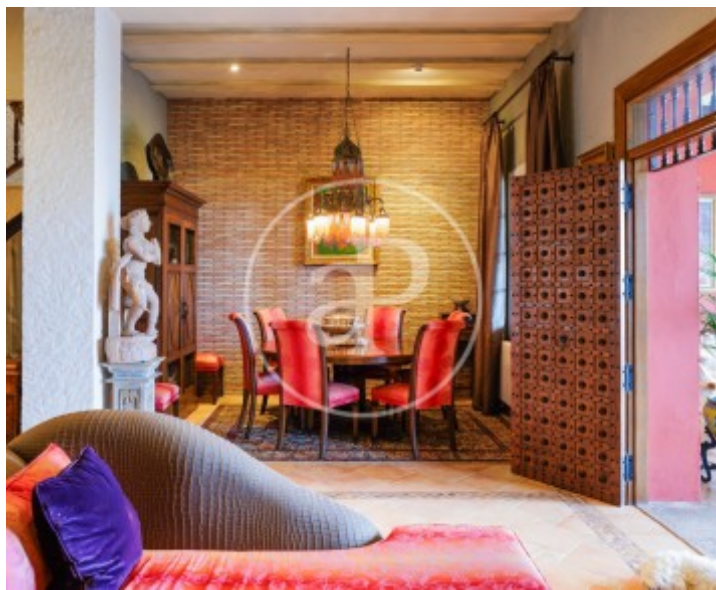
Burriana, Plana Baja

REF. VV2502017



Burriana, Plana Baja

REF. VV2502017



The information about any property is not binding to any offer or contract. Any verbal or written declaration made by aProperties with regards to the value or condition of the property should not be considered accurate or factual. The pictures make reference to some parts of the property at the times that they were taken. The areas, dimensions and distances that are given are approximate and should be checked by the client. The images are computer generated and are just an approximate indication of the real appearance of the property; these may change at any time. The information with regards to the property may also change at any time.

For **more information** or
to make an appointment

apropertiesvalencia@aproperties.es
Tel: 96 128 59 65
www.aproperties.es