

(Pals)

Ref: ONB2211007



New building (work) for sale with Terrace in Pals

Poble de Pals is a new development of high quality detached houses located in the idyllic village of Pals, in the Baix Empordà. It is a residential development, unique in Pals, with top quality finishes and modern architecture to enjoy the luxury of living in the Empordà, both in winter, with a cosy living room with fireplace and in summer with a spectacular garden with barbecue and swimming pool. Poble de Pals consists of 5 detached houses and two semi-detached houses. The 5 single-family houses are about 300 m2 with an open-plan basement, main floor with living-dining room and kitchen in a single room with access to the garden with swimming pool, laundry, bathroom and garage. The first floor is distributed with 4 double bedrooms and two bathrooms, one en suite with dressing room. The 2 semi-detached houses are about 200m2 with main floor with living room and kitchen in one room with access to the garden with pool, laundry, bathroom and garage. The first floor is distributed with 4 double bedrooms and two bathrooms, one en suite with dressing room. The village of Pals, located in Baix Empordà, is a small medieval village with beautiful cobbled streets, walls and gothic buildings that make it one of the most precious architectural jewels.

Pals

Unit 5

Completion Q2 2023

FEATURES

Surface 386 m² / 422 m² terrace

4 Rooms

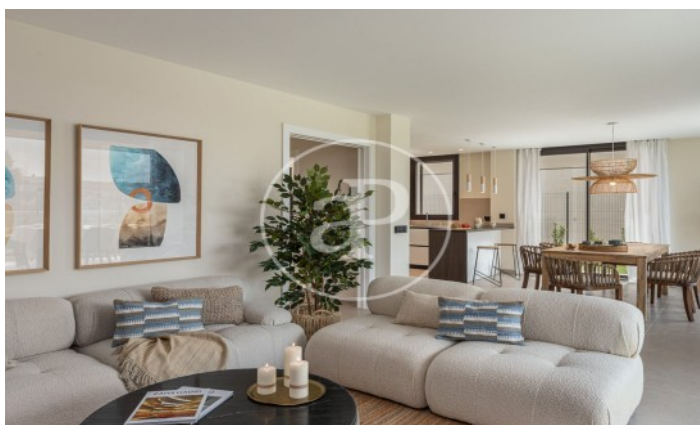
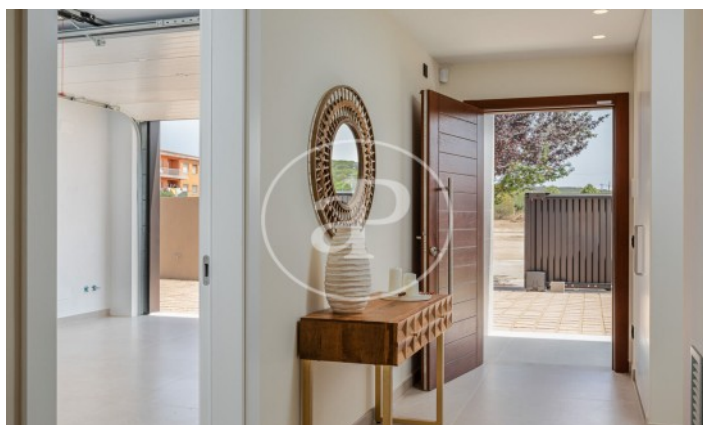
3 Toilets

- ✓ Views
- ✓ Heating
- ✓ Boxroom
- ✓ AACC
- ✓ Terrace
- ✓ Backyard
- ✓ Pool
- ✓ Has parking

Price 890,000 €

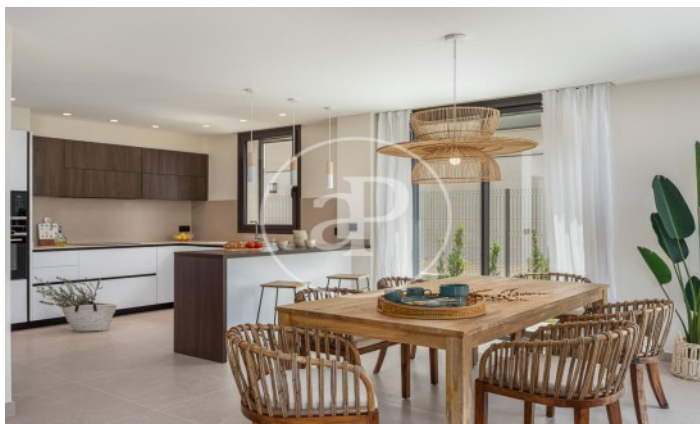
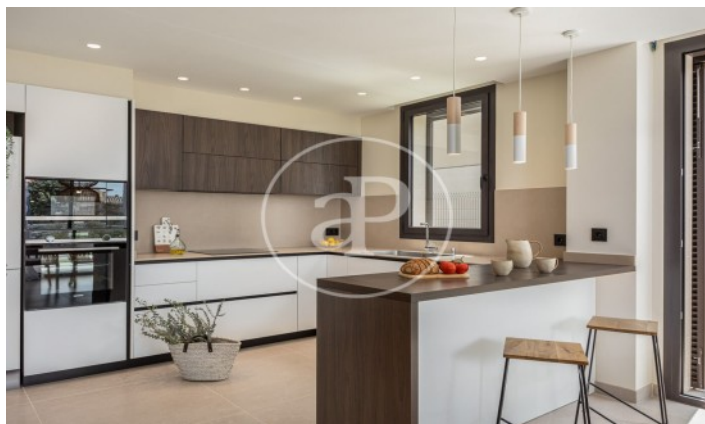
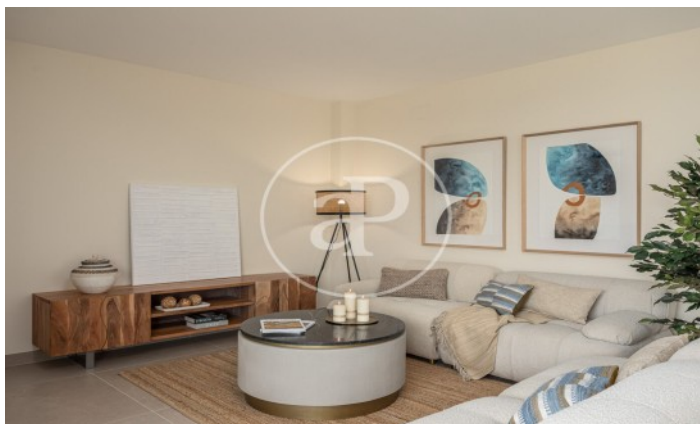
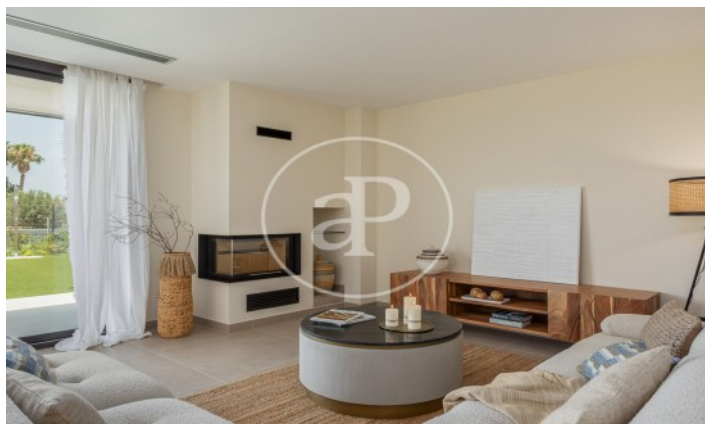
(Pals)

Ref: ONB2211007



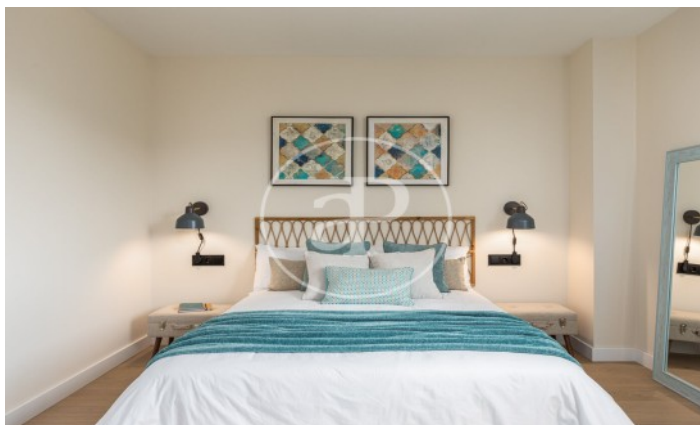
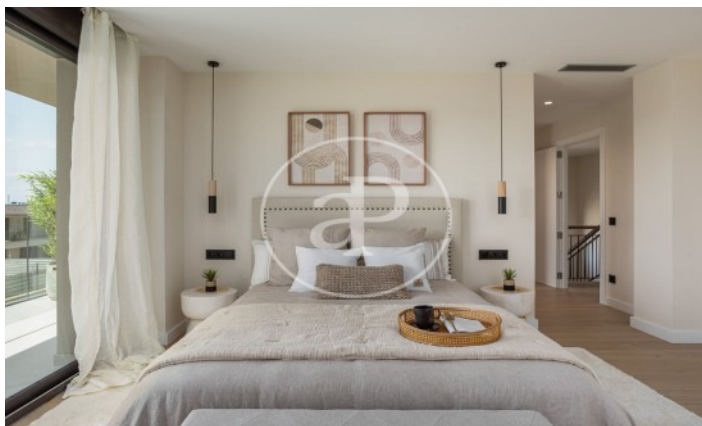
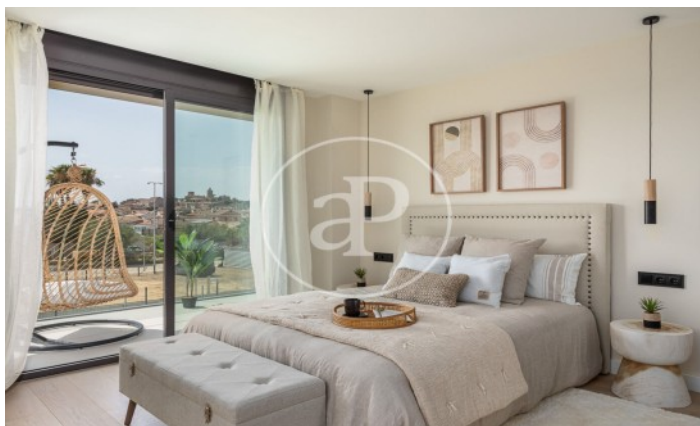
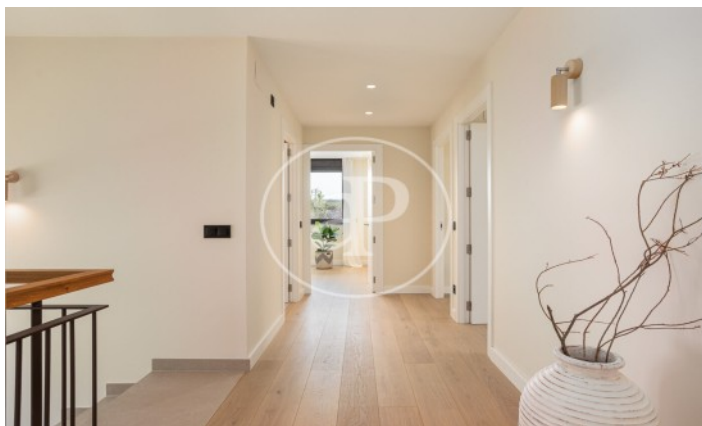
(Pals)

Ref: ONB2211007



(Pals)

Ref: ONB2211007



The information about any property is not binding to any offer or contract. Any verbal or written declaration made by aProperties with regards to the value or condition of the property should not be considered accurate or factual. The pictures make reference to some parts of the property at the times that they were taken. The areas, dimensions and distances that are given are approximate and should be checked by the client. The images are computer generated and are just an approximate indication of the real appearance of the property; these may change at any time. The information with regards to the property may also change at any time.

Contact us today for more information or to arrange a viewing

Tel: 93 528 89 08

apropertiesbarcelona@aproperties.es

<https://www.aproperties.es>