

Son Sardina, Palma de Mallorca

REF. VPM2403032

House for sale in Son Sardina

Features

- ✓ Views
- ✓ Heating
- ✓ Boxroom
- ✓ AACC
- ✓ Terrace
- ✓ Backyard
- ✓ Pool
- ✓ Gym
- ✓ Has parking

Surface

530 m²

Plot surface

16,500 m²

Bedrooms

4

Bathrooms

4



Price

2,600,000 €

Finca, designed to make the most of all the potential of the property's space.

It becomes a very private home, ideal to disconnect and enjoy a variety of activities for the whole family. The property is distributed over 2 floors. On the main floor, we find a spacious living room with fireplace connected directly to the main dining room and a fully equipped kitchen. On the upper floor, there are 3 double bedrooms and 2 bathrooms. In total, the house has 4 double bedrooms and 3 bathrooms (one of them en suite). All rooms have air conditioning and gas heating. The property is south facing, making the most of the natural light throughout the day. Outside, there is a

casita-dining room with wood-burning barbecue, fireplace and pantry, in front of a 12x6 m2 swimming pool. There is also a second house-gymnasium with sauna and sports equipment. The grounds also include a football pitch and a children's playground. In the gardens, there are orange, lemon, almond and olive trees, among others. The property also has a tourist licence and is in perfect condition to move into. It is located in an exclusive and private area of Son Sardina, a few metres away from Palmanyola and 15 minutes away from the centre of Palma. Don't miss this opportunity to live in...

Contact us,
we will be happy to assist you,
to offer you more details and information.

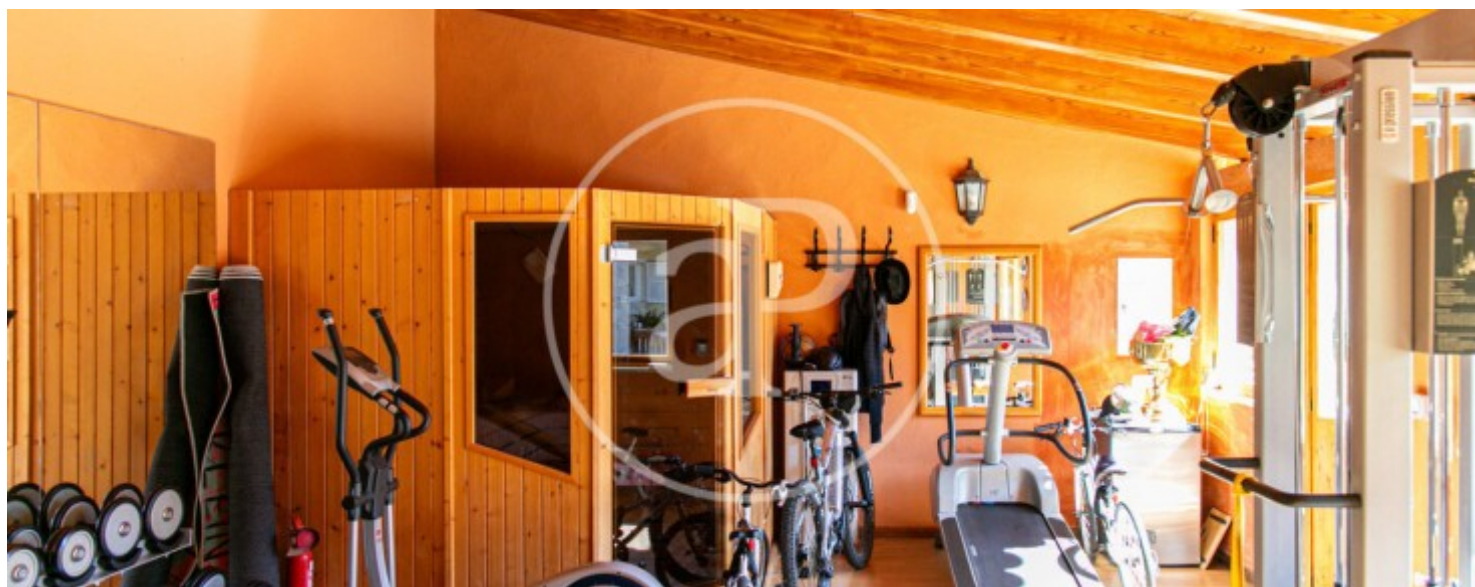
Son Sardina, Palma de Mallorca

REF. VPM2403032



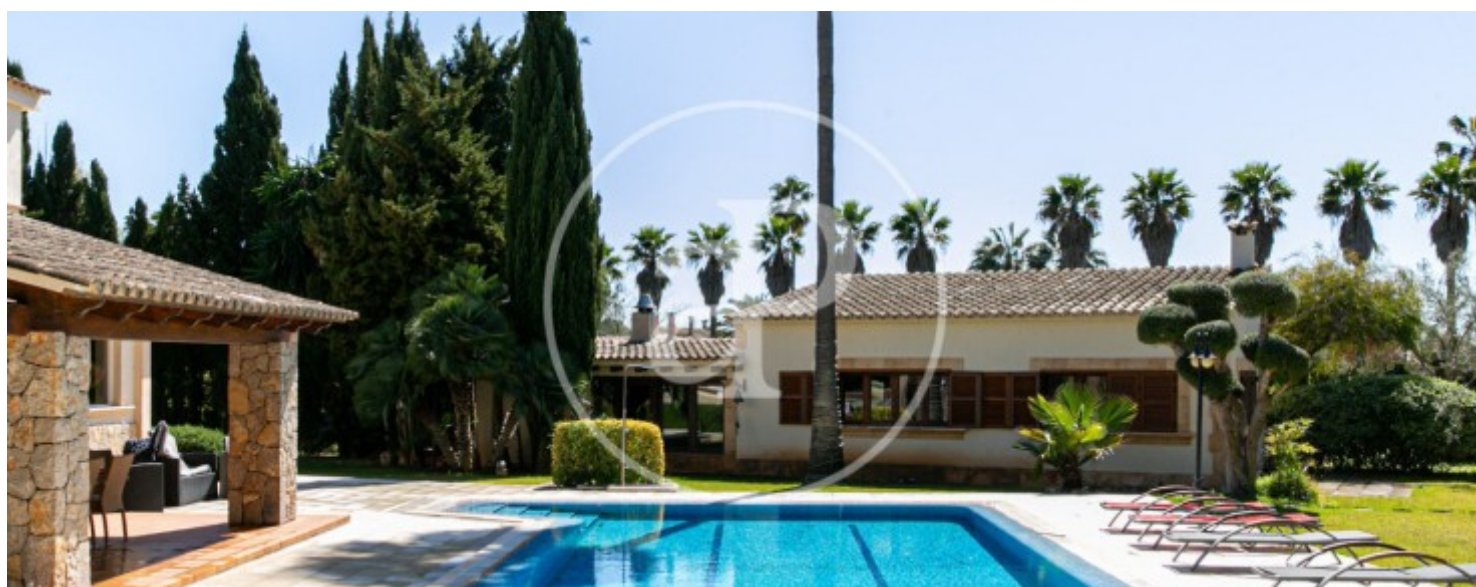
Son Sardina, Palma de Mallorca

REF. VPM2403032



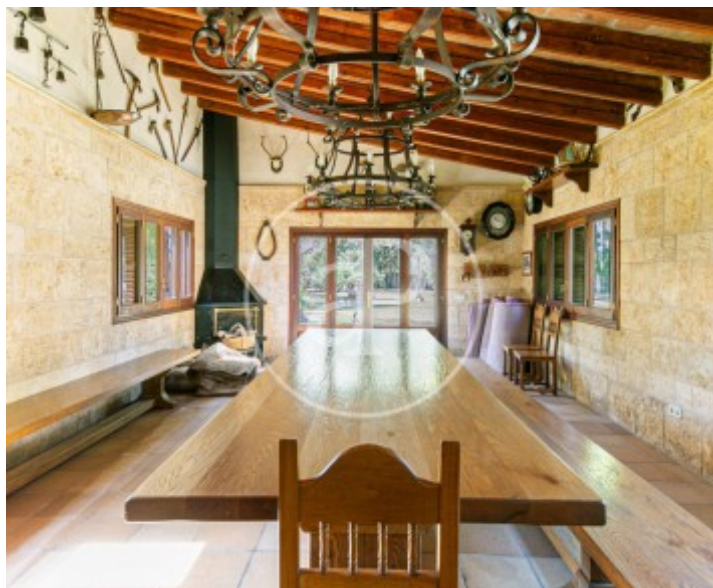
Son Sardina, Palma de Mallorca

REF. VPM2403032



Son Sardina, Palma de Mallorca

REF. VPM2403032



The information about any property is not binding to any offer or contract. Any verbal or written declaration made by aProperties with regards to the value or condition of the property should not be considered accurate or factual. The pictures make reference to some parts of the property at the times that they were taken. The areas, dimensions and distances that are given are approximate and should be checked by the client. The images are computer generated and are just an approximate indication of the real appearance of the property; these may change at any time. The information with regards to the property may also change at any time.

For **more information** or
to make an appointment

apropertiespalma@aproperties.es
Tel: 871 16 01 60
www.aproperties.es