



Son Sardina, Palma de Mallorca

REF. VPM2211039

Rustic property for sale in Establiments - Son Sardina

Features

- ✓ Views
- ✓ Boxroom
- ✓ Backyard
- ✓ Has parking
- ✓ Furnished
- ✓ Terrace
- ✓ Pool

Price

1,995,000 €

Surface

450 m²

Bedrooms

4

Bathrooms

3



The villa is located in Son Sardina, a quiet area just 10 minutes by car from Palma, on a fully fenced plot of 20.

000 sqm where an avocado production is active with 230 trees that guarantee the (bio) production of renowned Mallorcan avocados distributed on the island with its own registered brand. Built in 1991, the villa has a living area of 450 sqm, distributed over 2 floors. The lower floor consists of a living-dining room with a fireplace, an equipped kitchen, 1 double bedroom and 1 bathroom. On the upper floor we will find 3 double bedrooms and 2 bathrooms (1 en suite) and a terrace that offers a great view over the large plot, the forest and the Sierra de

Tramuntana. In the outdoor area of the villa there is a nice porch that gives access to a beautiful 50 sqm pool. In front of the pool there is a gazebo with all the furniture, a wood and gas barbecue with a porch and tables. The equipment includes: pre-installation of a heating system, fireplace, marble floors, fiber optics, large windows with Climalit double glazing, an automatic entrance gate to the farm and its own high-flow well and an automatic irrigation system throughout the farm. . The property has an ETC vacation rental license without restrictions for 8 people, confirming the...

Contact us,
we will be happy to assist you,
to offer you more details and information.

Son Sardina, Palma de Mallorca

REF. VPM2211039



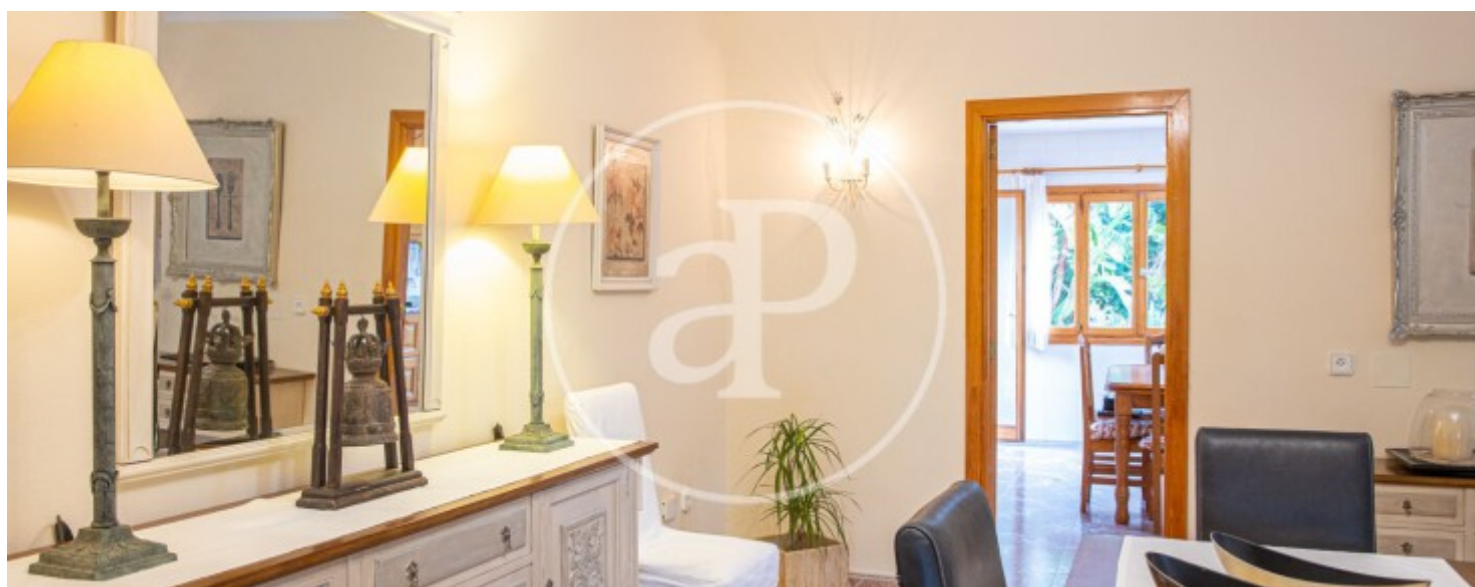
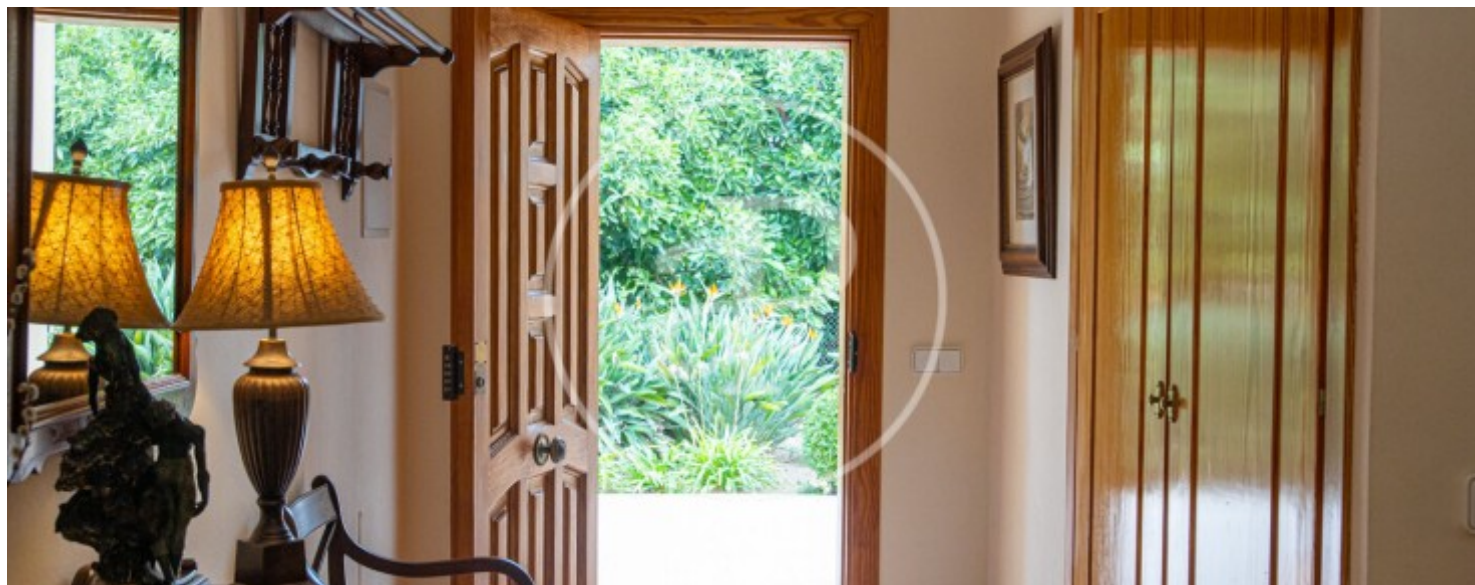
Son Sardina, Palma de Mallorca

REF. VPM2211039



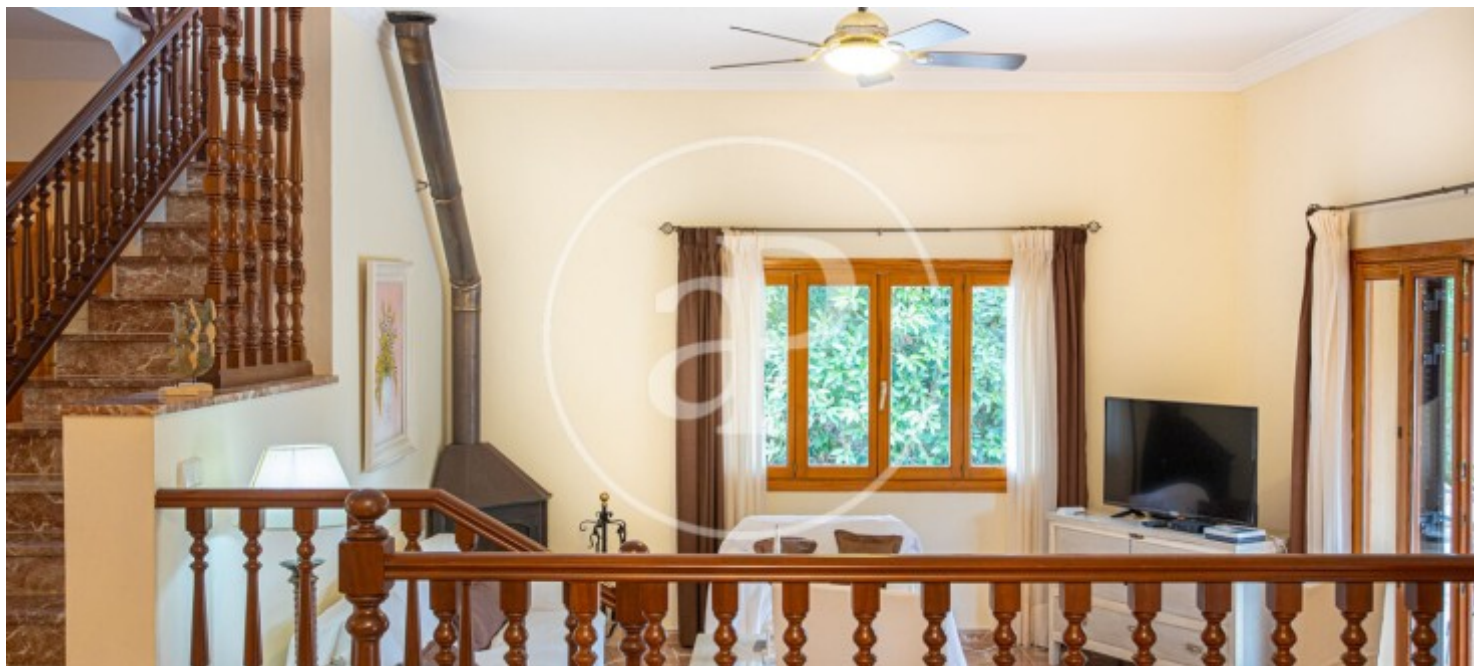
Son Sardina, Palma de Mallorca

REF. VPM2211039



Son Sardina, Palma de Mallorca

REF. VPM2211039



The information about any property is not binding to any offer or contract. Any verbal or written declaration made by aProperties with regards to the value or condition of the property should not be considered accurate or factual. The pictures make reference to some parts of the property at the times that they were taken. The areas, dimensions and distances that are given are approximate and should be checked by the client. The images are computer generated and are just an approximate indication of the real appearance of the property; these may change at any time. The information with regards to the property may also change at any time.

For **more information** or
to make an appointment

apropertiespalma@aproperties.es
Tel: 871 16 01 60
www.aproperties.es