

(Son Quint)

Ref: ONPM2110002



## *New Construction Promotion in front of Golf Course*

The Promotion has all the services that life in the city provides: public transport, nearby schools, access to local shops and, at the same time, the tranquility and tranquility of a residential area in a privileged environment next to three golf courses, Son Muntaner, Son Quint and Son Vida, surrounded by green areas where you can practice your favorite sport and with easy access to the ring road of the city of Palma. The main facade facing the golf course offers exceptional panoramic views towards the mountains of Son Vida and Genova. The set of Ground Floor plus two heights uses facade materials such as natural stone combined with white painted mortar renderings and holes lined with dark painted steel sheet. The communal area is landscaped with species of low water consumption, with two swimming pools with automatic purification and disinfection system using salts to avoid contact with chlorine. It also has a children's play area, bathrooms and changing rooms. Parking spaces with pre-installation of electrical outlets and storage rooms complete the equipment of the homes. The materials of the interior of the houses such as the natural oak parquet, the aluminum carpentry wi [...]

Palma de Mallorca / Son Quint

Unit bj 1ª - O

Completion Q2 2023

### **FEATURES**

Surface 153 m<sup>2</sup> / 79 m<sup>2</sup> terrace

4 Rooms

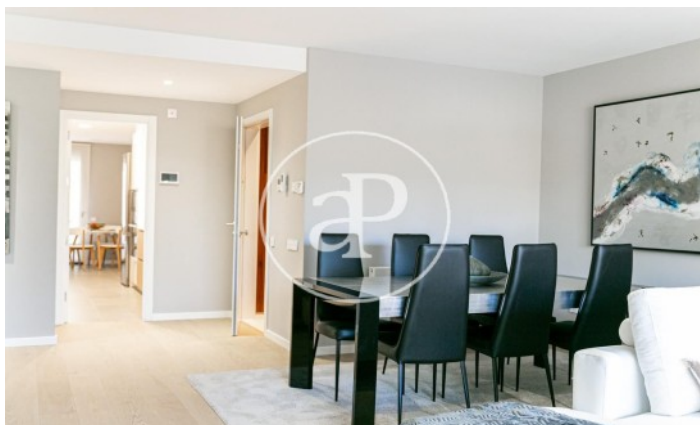
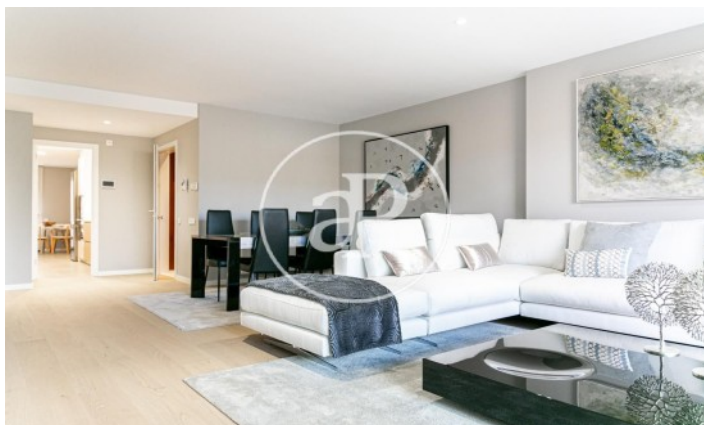
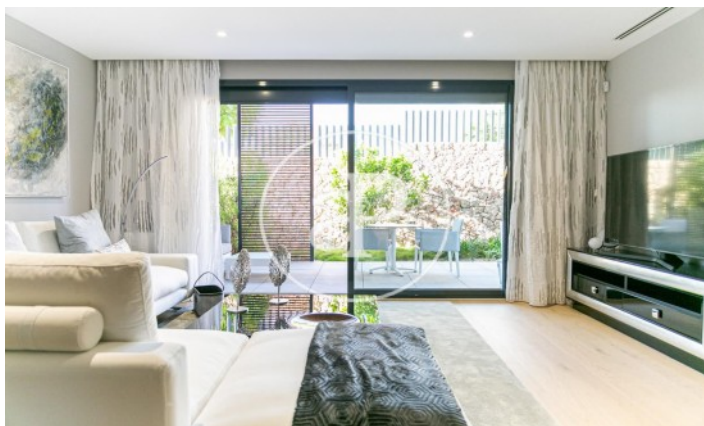
2 Toilets 1 Restrooms

- ✓ Views
- ✓ Heating
- ✓ Boxroom
- ✓ AACC
- ✓ Terrace
- ✓ Backyard
- ✓ Pool
- ✓ Lift
- ✓ Has parking

Price 801,000 €

(Son Quint)

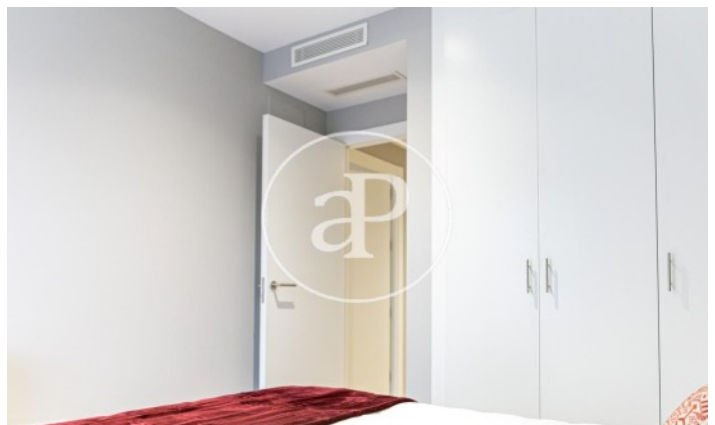
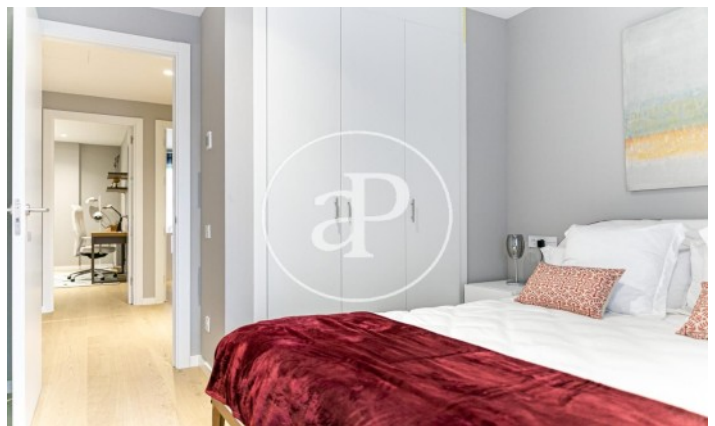
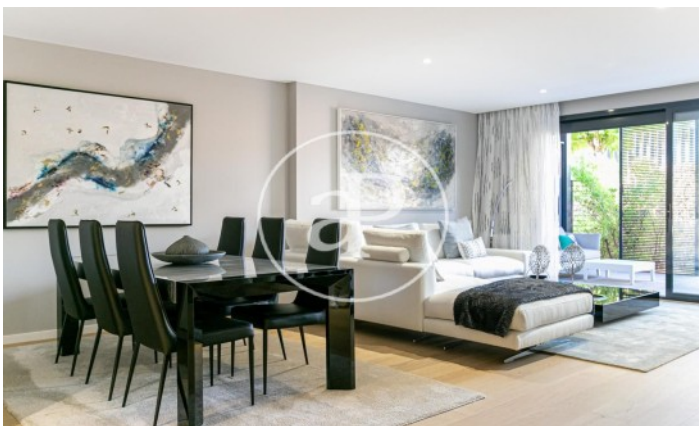
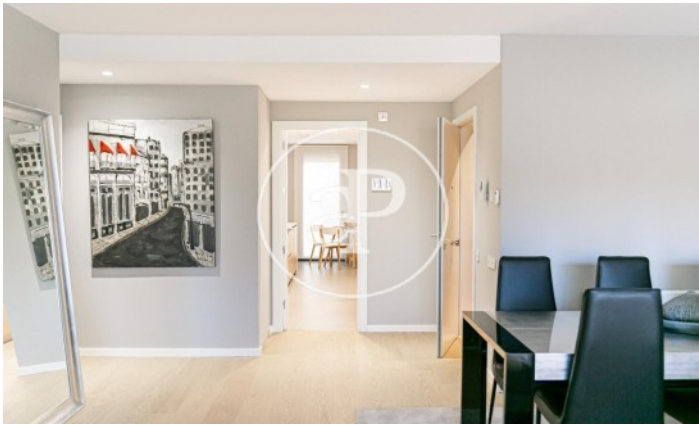
Ref: ONPM2110002





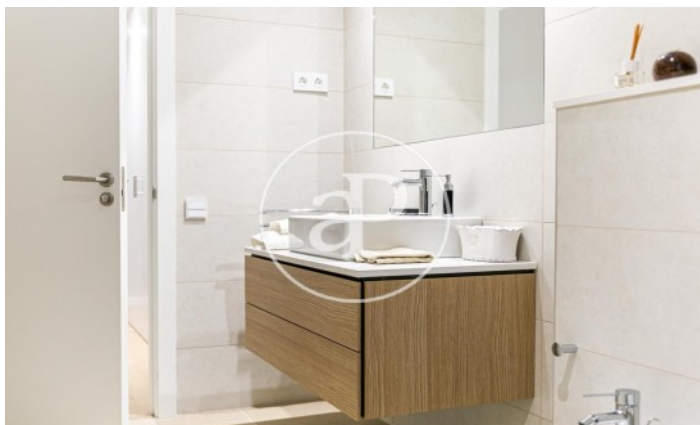
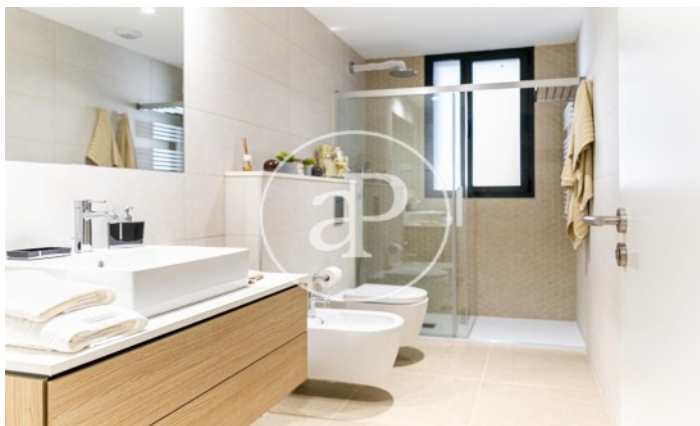
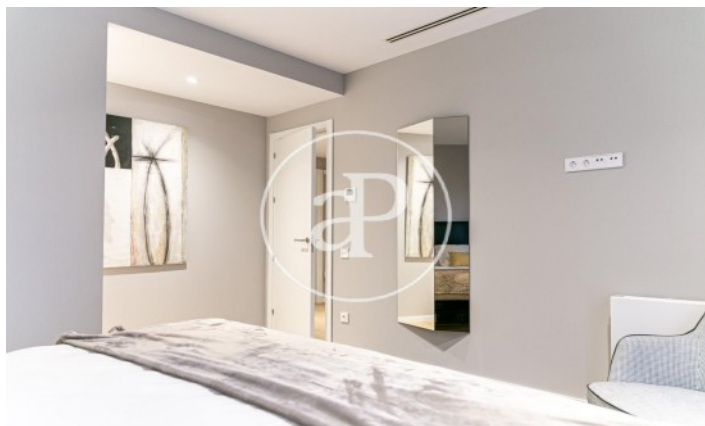
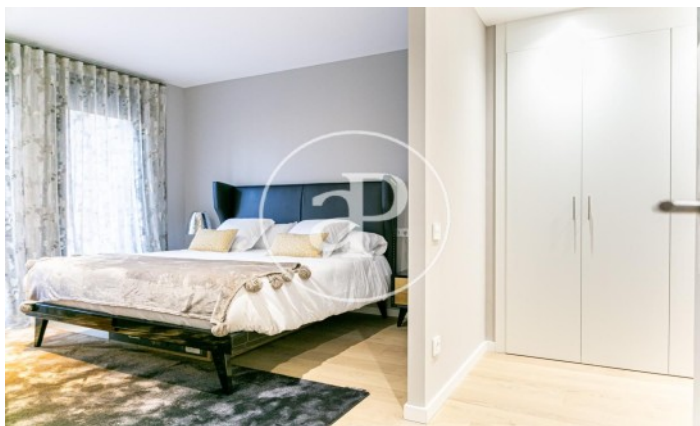
(Son Quint)

Ref: ONPM2110002



(Son Quint)

Ref: ONPM2110002



The information about any property is not binding to any offer or contract. Any verbal or written declaration made by aProperties with regards to the value or condition of the property should not be considered accurate or factual. The pictures make reference to some parts of the property at the times that they were taken. The areas, dimensions and distances that are given are approximate and should be checked by the client. The images are computer generated and are just an approximate indication of the real appearance of the property; these may change at any time. The information with regards to the property may also change at any time.

Contact us today for more information or to arrange a viewing

Tel: 871 16 01 60

[apropertiespalma@aproperties.es](mailto:apropertiespalma@aproperties.es)

<https://www.aproperties.es>