



(Son Espanyolet)

Ref: ONPM2504001



Promotion of four single-family houses in Son Espanyolet

Located in one of the most sought-after and residential areas of Palma, next to the Juaneda Clinic and surrounded by large green spaces, these homes enjoy a privileged location in front of the "Sagrada Corazón" Park. Additionally, they are just a step away from the best national and international schools, with easy access to all kinds of transportation and the main city entrances and exits via motorway. Just a few minutes from the vibrant Santa Catalina neighborhood, known for its exclusive restaurants and nightlife, and only a short walk from Pueblo Español. The construction of these exclusive homes is already underway, with completion expected in the last quarter of 2026. Each property boasts a generous 180 sqm of space, distributed over two floors and a basement, along with 60 sqm of private gardens and terraces, which include an individual pool for each home. Designed with natural, high-quality materials, these houses exude a warm and serene atmosphere that invites comfort and tranquility. Intelligent layout and luxury finishes. The main entrance is through a charming garden with private parking. The ground floor features a master bedroom suite with [...]

Palma de Mallorca / Son Espanyolet

Unit bj A

Completion Q2 2025

FEATURES

Surface 185 m² / 69 m² terrace

3 Rooms

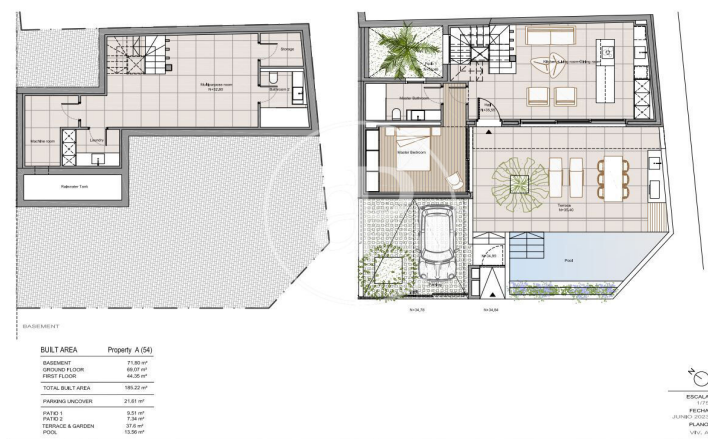
3 Toilets

- ✓ Views
- ✓ Heating
- ✓ Boxroom
- ✓ AACC
- ✓ Terrace
- ✓ Backyard
- ✓ Pool
- ✓ Gym
- ✓ Has parking

Price 1,500,000 €

(Son Espanyolet)

Ref: ONPM2504001





APROPERTIES
REAL ESTATE

Calle Unió 9
Tel: 871 16 01 60
<https://www.aproperties.es>

(Son Espanyolet)

Ref: ONPM2504001



Property A (54)

BUILT AREA	71.80 m²
BASEMENT	69.87 m²
GROUND FLOOR	42.35 m²
FIRST FLOOR	188.22 m²
TOTAL BUILT AREA	188.22 m²
PARKING UNCOVER	25.81 m²
PATIO	9.51 m²
WATER FEATURE	1.24 m²
POOL	37.61 m²
TERRACE & GARDEN	13.99 m²

ESCALA
1:75
JUNIO 2023
PLANO
V01_A



Property B (54)

BUILT AREA	78.80 m²
BASEMENT	78.80 m²
GROUND FLOOR	42.35 m²
FIRST FLOOR	188.22 m²
TOTAL BUILT AREA	188.22 m²
PARKING UNCOVER	13.97 m²
PARKING COVER	11.27 m²
TOTAL PARKING	25.24 m²
PATIO	13.97 m²
WATER FEATURE	7.99 m²
POOL	15.64 m²
TERRACE & GARDEN	36.99 m²

ESCALA
1:75
JUNIO 2023
PLANO
V01_B



Property B (54)

BUILT AREA	78.80 m²
BASEMENT	78.80 m²
GROUND FLOOR	42.35 m²
FIRST FLOOR	188.22 m²
TOTAL BUILT AREA	188.22 m²
PARKING UNCOVER	13.97 m²
PARKING COVER	11.27 m²
TOTAL PARKING	25.24 m²
PATIO	13.97 m²
WATER FEATURE	7.99 m²
POOL	15.64 m²
TERRACE & GARDEN	36.99 m²

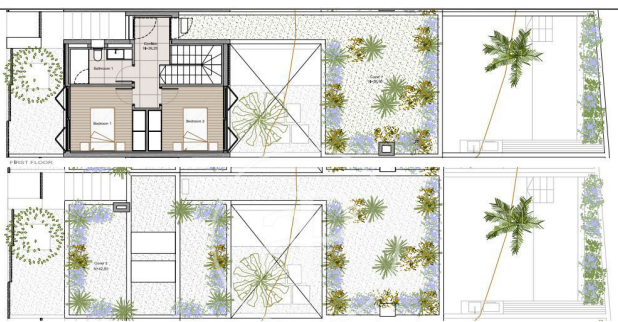
ESCALA
1:75
JUNIO 2023
PLANO
V01_C



Property C (56)

BUILT AREA	78.80 m²
BASEMENT	78.80 m²
GROUND FLOOR	42.35 m²
FIRST FLOOR	188.22 m²
TOTAL BUILT AREA	188.22 m²
PARKING UNCOVER	13.97 m²
PARKING COVER	11.27 m²
TOTAL PARKING	25.24 m²
PATIO	13.97 m²
WATER FEATURE	7.99 m²
POOL	15.64 m²
TERRACE & GARDEN	36.99 m²

ESCALA
1:75
JUNIO 2023
PLANO
V01_D



Property C (56)

BUILT AREA	78.80 m²
BASEMENT	78.80 m²
GROUND FLOOR	42.35 m²
FIRST FLOOR	188.22 m²
TOTAL BUILT AREA	188.22 m²
PARKING UNCOVER	13.97 m²
PARKING COVER	11.27 m²
TOTAL PARKING	25.24 m²
PATIO	13.97 m²
WATER FEATURE	7.99 m²
POOL	15.64 m²
TERRACE & GARDEN	36.99 m²

ESCALA
1:75
JUNIO 2023
PLANO
V01_E



Property D (56)

BUILT AREA	78.80 m²
BASEMENT	78.80 m²
GROUND FLOOR	42.35 m²
FIRST FLOOR	188.22 m²
TOTAL BUILT AREA	188.22 m²
PARKING UNCOVER	13.97 m²
PARKING COVER	11.27 m²
TOTAL PARKING	25.24 m²
PATIO	13.97 m²
WATER FEATURE	7.99 m²
POOL	15.64 m²
TERRACE & GARDEN	36.99 m²

ESCALA
1:75
JUNIO 2023
PLANO
V01_F