



(Son Espanyolet)

Ref: ONPM2505001



## *New construction development in Son Espanyolet*

Exclusive Development of 3 Homes in Son Espanyolet - Palma de Mallorca Swimming Pool, Private Terraces and a Charming Mallorcan Setting We present a unique opportunity to live or invest in one of the most desirable areas of Palma: Son Espanyolet, a neighborhood that combines a quiet and residential lifestyle with the proximity to the vibrant city center. This exclusive development consists of 3 homes of modern design, with high quality finishes, spacious private terraces and elegant individual swimming pools for each home ideal for enjoying the Mediterranean climate. Main features: Bright homes with modern and contemporary design. Private outdoor spaces with individual swimming pools for each home Perfect terraces to enjoy the outdoors Privileged location in Son Espanyolet, steps away from Santa Catalina, Paseo Marítimo and the historic center Quiet area with local charm, signature cafes, stores and schools Excellent connections and easy access to all amenities Experience the perfect balance between city and calm, tradition and modernity. An exclusive development, in a neighborhood with soul, history and high demand. Contact us for more information or to schedule a visit, don't miss this opportunity!

Palma de Mallorca / Son Espanyolet

Unit 1

Completion Q3 2025

### **FEATURES**

Surface 120 m<sup>2</sup> / 28 m<sup>2</sup> terrace

3 Rooms

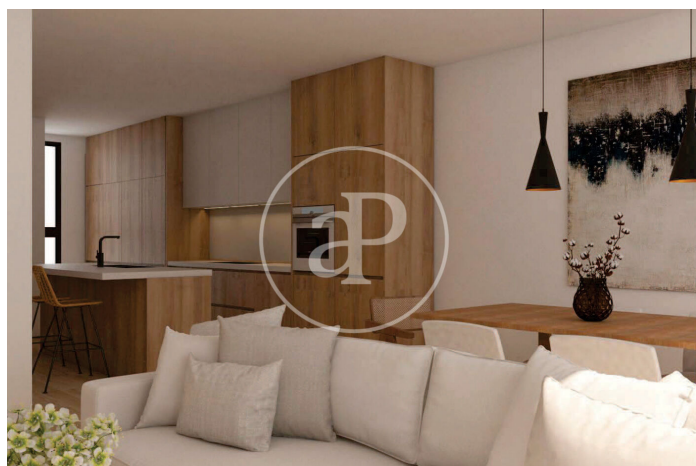
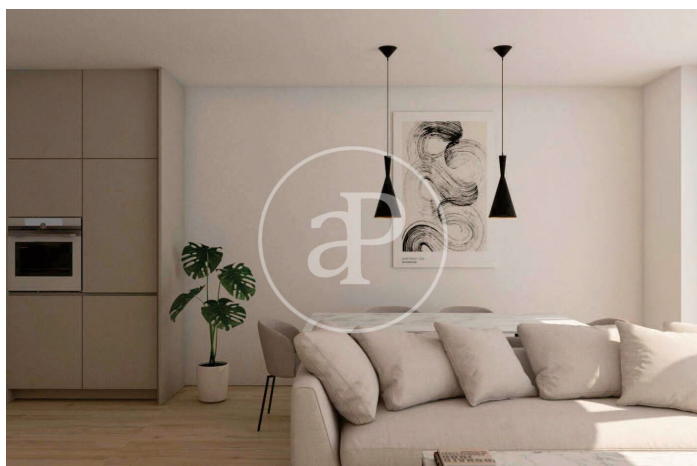
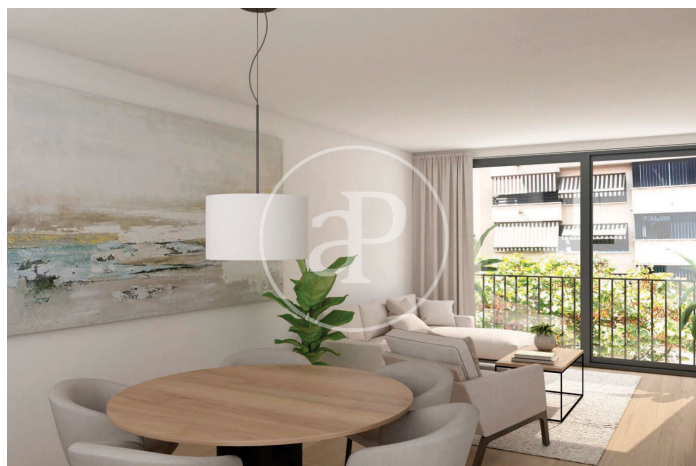
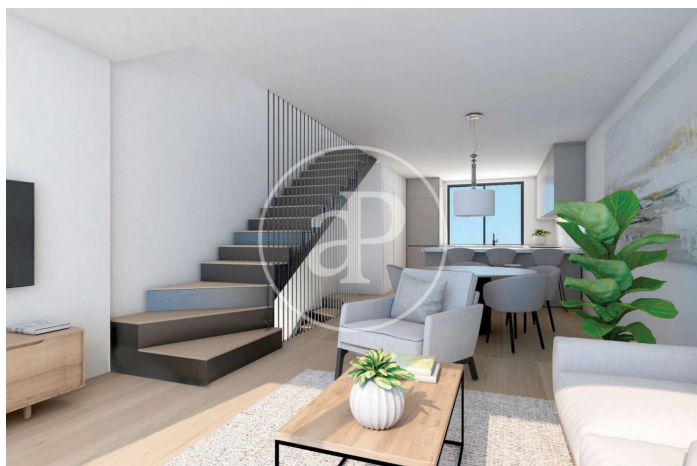
3 Toilets

- ✓ Terrace
- ✓ Pool
- ✓ Has parking

Price 1,055,000 €

(Son Espanyolet)

Ref: ONPM2505001





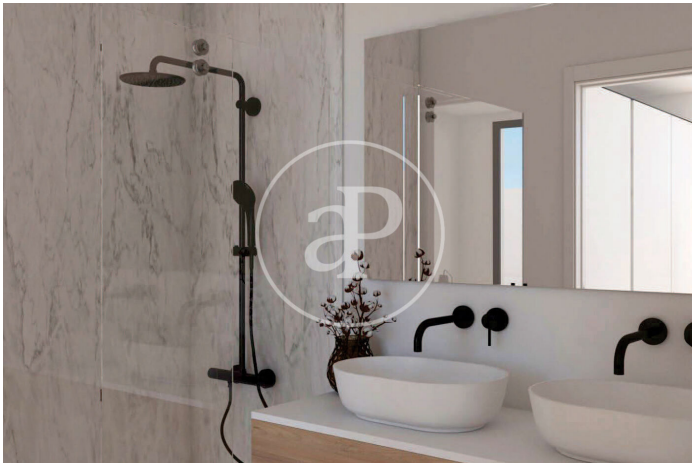


APROPERTIES  
REAL ESTATE

Calle Unió 9  
Tel: 871 16 01 60  
<https://www.aproperties.es>

(Son Espanyolet)

Ref: ONPM2505001



The information about any property is not binding to any offer or contract. Any verbal or written declaration made by aProperties with regards to the value or condition of the property should not be considered accurate or factual. The pictures make reference to some parts of the property at the times that they were taken. The areas, dimensions and distances that are given are approximate and should be checked by the client. The images are computer generated and are just an approximate indication of the real appearance of the property; these may change at any time. The information with regards to the property may also change at any time.

Contact us today for more information or to arrange a viewing

Tel: 871 16 01 60 [apropertiespalma@aproperties.es](mailto:apropertiespalma@aproperties.es) <https://www.aproperties.es>