

Son Espanyolet, Palma de Mallorca

REF. VPM2507005

Penthouse for Sale in Son Espanyolet

Features

- ✓ Heating
- ✓ AACC
- ✓ Terrace

Price
485,000 €

Surface
80 m²

Bedrooms
2

Bathrooms
2



Charming penthouse fully renovated four years ago with a private terrace, located next to the famous Santa Catalina neighbourhood.

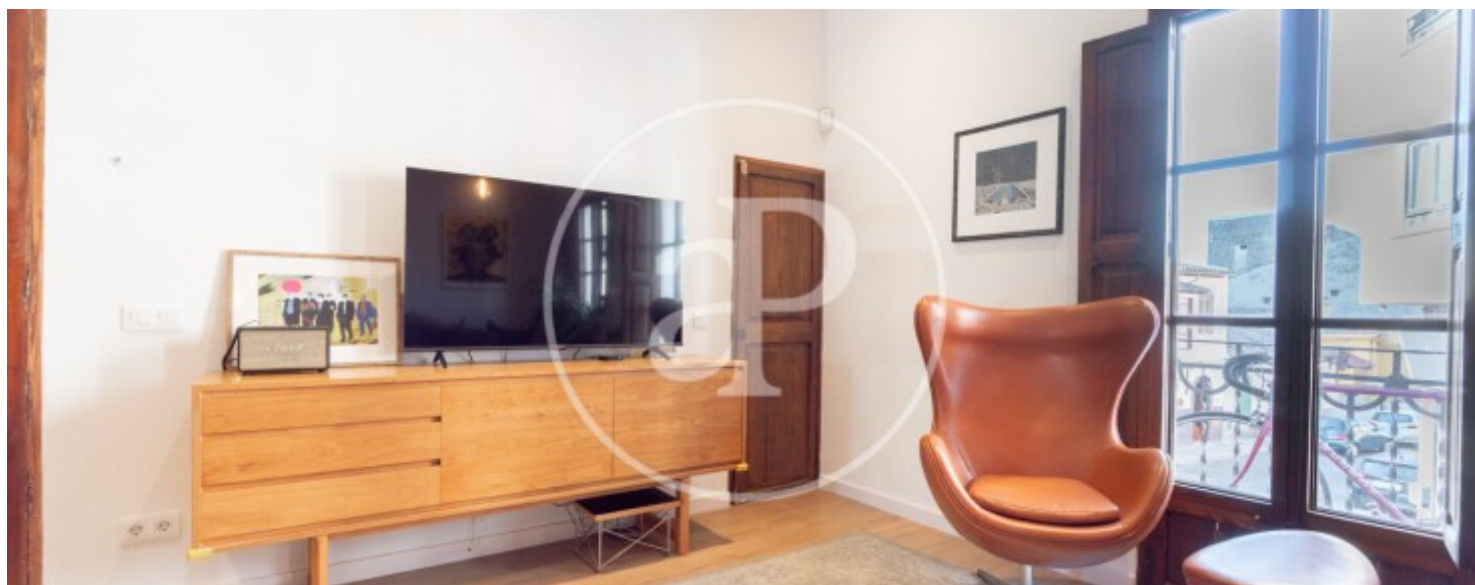
The property is laid out over two floors. The first floor features two bedrooms and two full bathrooms, a living room, and an open-plan kitchen in a modern style, fully equipped. You'll love the high ceilings with exposed beams that give a spacious feel, and there is potential to create a loft space for a third bedroom or storage. The wooden beams and shutters give the property a genuine and warm character. It's worth noting that the property is equipped with ducted air conditioning. A staircase leads to a private 14 m²

terrace where you can enjoy long summer evenings. Son Espanyolet is a peaceful, welcoming residential neighbourhood with a unique charm, located in the western part of Palma, right next to Santa Catalina and close to the city centre. Despite being near the more touristic areas, it retains an authentic and family-friendly atmosphere, making it one of the most desirable areas to live in Palma. Excellent public transport links and fast access to the Via de Cintura (Ma-20). The area is well connected to hospitals, international schools, supermarkets, and essential services. Local shops,...

Contact us,
we will be happy to assist you,
to offer you more details and information.

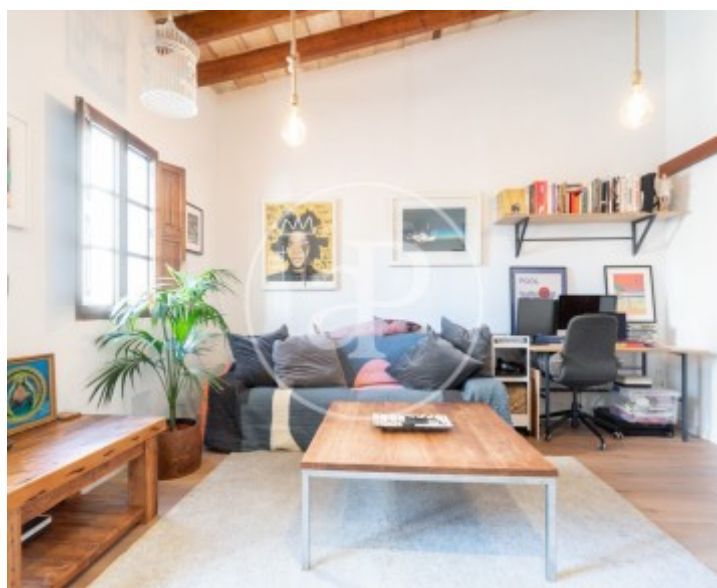
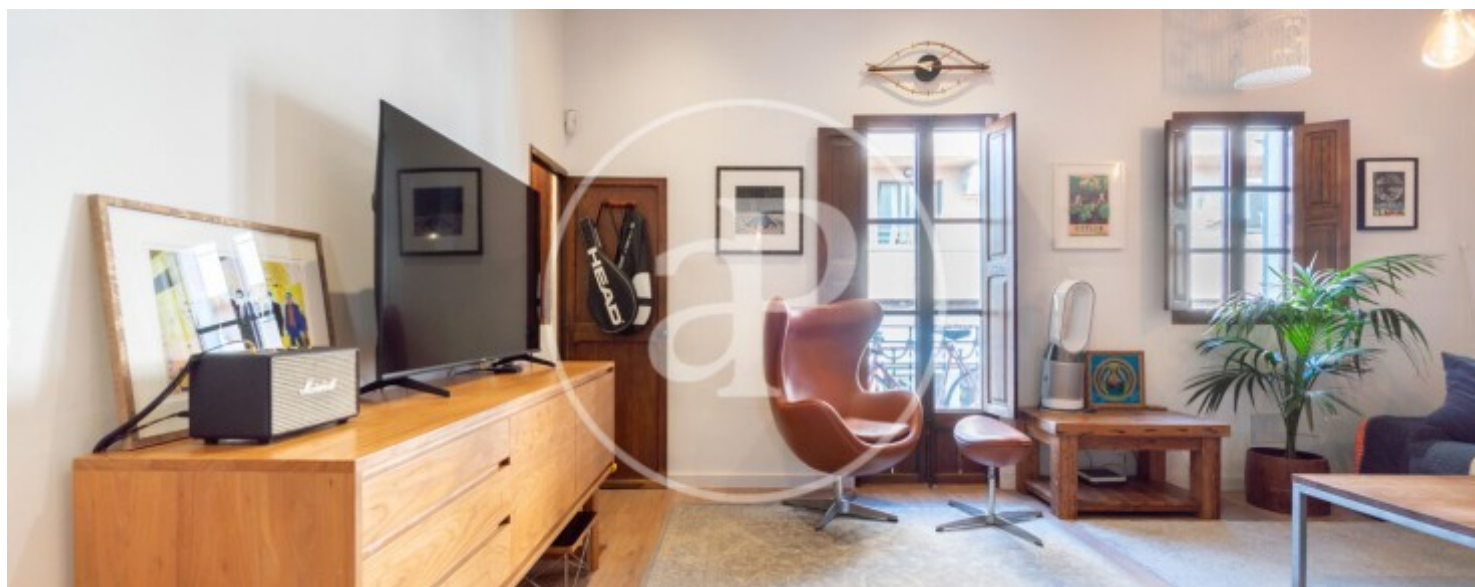
Son Espanyolet, Palma de Mallorca

REF. VPM2507005



Son Espanyolet, Palma de Mallorca

REF. VPM2507005



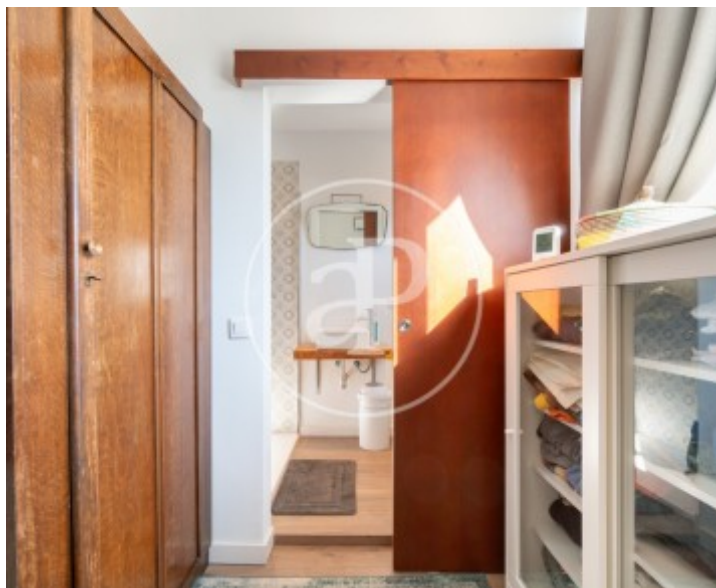
Son Espanyolet, Palma de Mallorca

REF. VPM2507005



Son Espanyolet, Palma de Mallorca

REF. VPM2507005



The information about any property is not binding to any offer or contract. Any verbal or written declaration made by aProperties with regards to the value or condition of the property should not be considered accurate or factual. The pictures make reference to some parts of the property at the times that they were taken. The areas, dimensions and distances that are given are approximate and should be checked by the client. The images are computer generated and are just an approximate indication of the real appearance of the property; these may change at any time. The information with regards to the property may also change at any time.

For **more information** or
to make an appointment

apropertiespalma@aproperties.es
Tel: 871 16 01 60
www.aproperties.es