

Son Espanyolet, Palma de Mallorca

REF. APM2607009

Apartment for Rent in Son Espanyolet

Features

Surface

80 m²

Bedrooms

3

Bathroom

1

✓ Furnished

✓ AACC

Price

1,800 €



LONG-TERM RENTAL Discover this beautifully fully renovated, brand-new apartment located in Son Espanyolet, one of Palma's most charming and sought-after residential neighbourhoods.

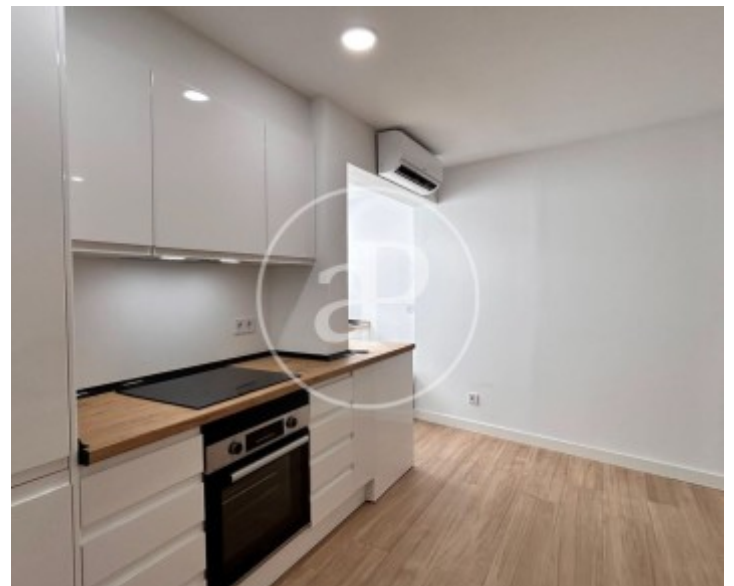
Combining contemporary design, comfort and an excellent location, this property is ideal for families as well as professionals looking to enjoy city living with every convenience close at hand. The apartment features three spacious double bedrooms, a bright and inviting living and dining area, a modern bathroom with a walk-in shower, and a fully equipped contemporary kitchen complete with an oven, ceramic hob, refrigerator and washing machine, ready for immediate occupancy. Every detail

of the comprehensive renovation has been carefully considered, incorporating new flooring, high-quality finishes and modern materials that create a bright, elegant and comfortable living environment. The apartment is offered partially furnished, allowing new tenants to personalise the space to suit their own style. Situated on the first floor of a building without a lift, the property enjoys a privileged location just a few minutes from Plaça del Progrés, Santa Catalina and the Paseo Marítimo. Supermarkets, cafés, restaurants, shops, sports facilities and all...

Contact us,
we will be happy to assist you,
to offer you more details and information.

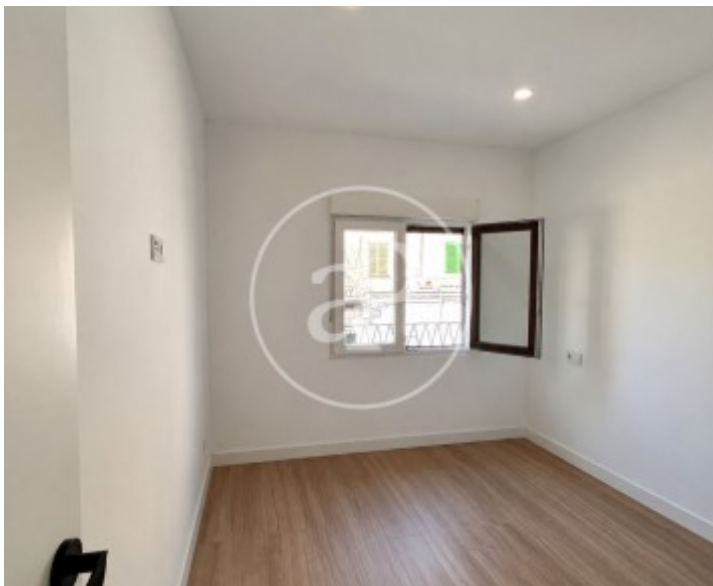
Son Espanyolet, Palma de Mallorca

REF. APM2607009



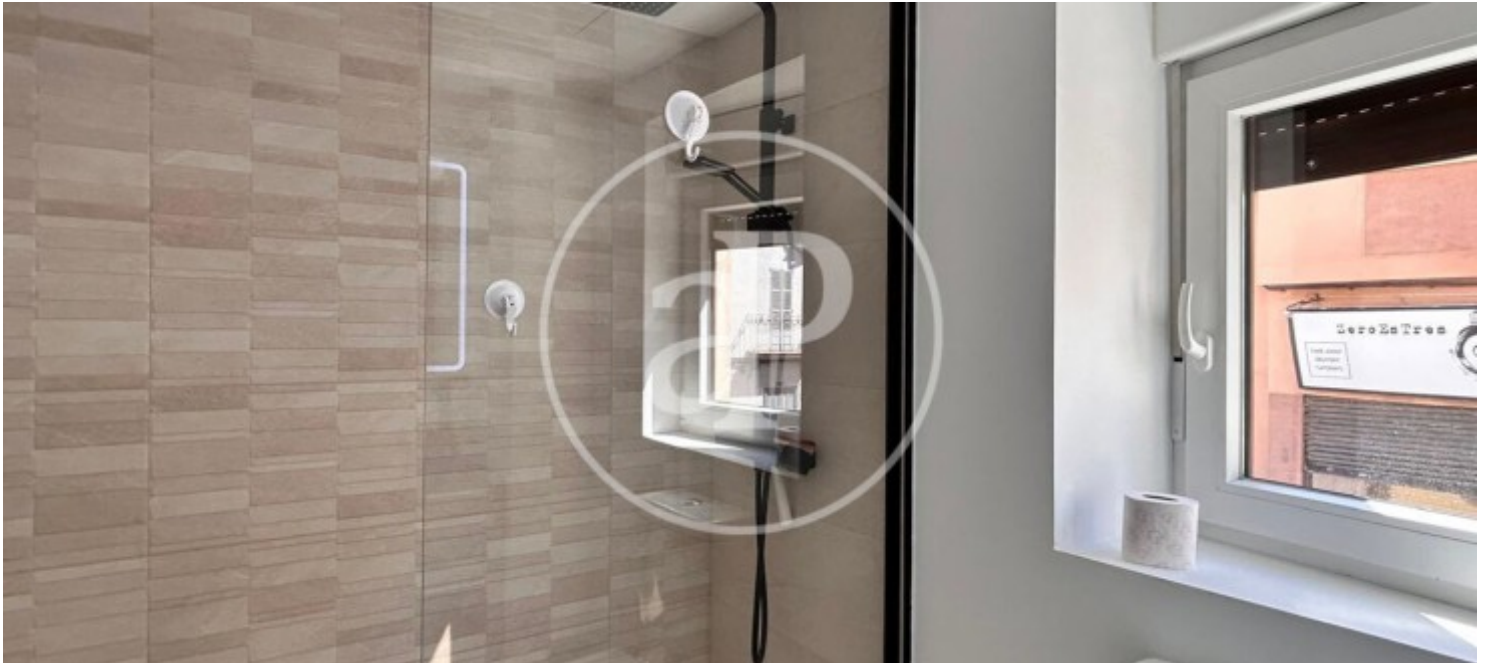
Son Espanyolet, Palma de Mallorca

REF. APM2607009



Son Espanyolet, Palma de Mallorca

REF. APM2607009



The information about any property is not binding to any offer or contract. Any verbal or written declaration made by aProperties with regards to the value or condition of the property should not be considered accurate or factual. The pictures make reference to some parts of the property at the times that they were taken. The areas, dimensions and distances that are given are approximate and should be checked by the client. The images are computer generated and are just an approximate indication of the real appearance of the property; these may change at any time. The information with regards to the property may also change at any time.

For **more information** or
to make an appointment

apropertiespalma@aproperties.es
Tel: 871 16 01 60
www.aproperties.es