

Son Espanyolet, Palma de Mallorca

REF. VPM2510002

House for sale in Son Espanyolet (Palma de Mallorca)

Features

- ✓ AACC
- ✓ Terrace
- ✓ Backyard

Price
585,000 €

Surface
220 m²

Bedrooms
2

Bathroom
1



Looking for a charming project in an unbeatable area? This house is perfect for those who wish to renovate and design their ideal home.

Located on a quiet, well-connected street just a 10-minute walk from Santa Catalina. The property currently offers 95 sqm of built space, with two bedrooms and one bathroom, and features a 115 sqm² garden — a rare outdoor space in the city center. The house requires a full renovation, offering the opportunity to reconfigure the layout to your taste and, thanks to the building rights, significantly expand the built area by adding more bedrooms, bathrooms, or even a rooftop terrace with views. The garden and patio provide a

private, bright environment — ideal for creating an oasis in the heart of the city. Situated in a quiet, high-end residential area, this property represents an exceptional opportunity for those looking to design a contemporary home tailored to their lifestyle or to develop a high-value investment project in one of Palma's most exclusive neighborhoods. A house with soul, ready to become the home of your dreams or an excellent investment.

Contact us,
we will be happy to assist you,
to offer you more details and information.

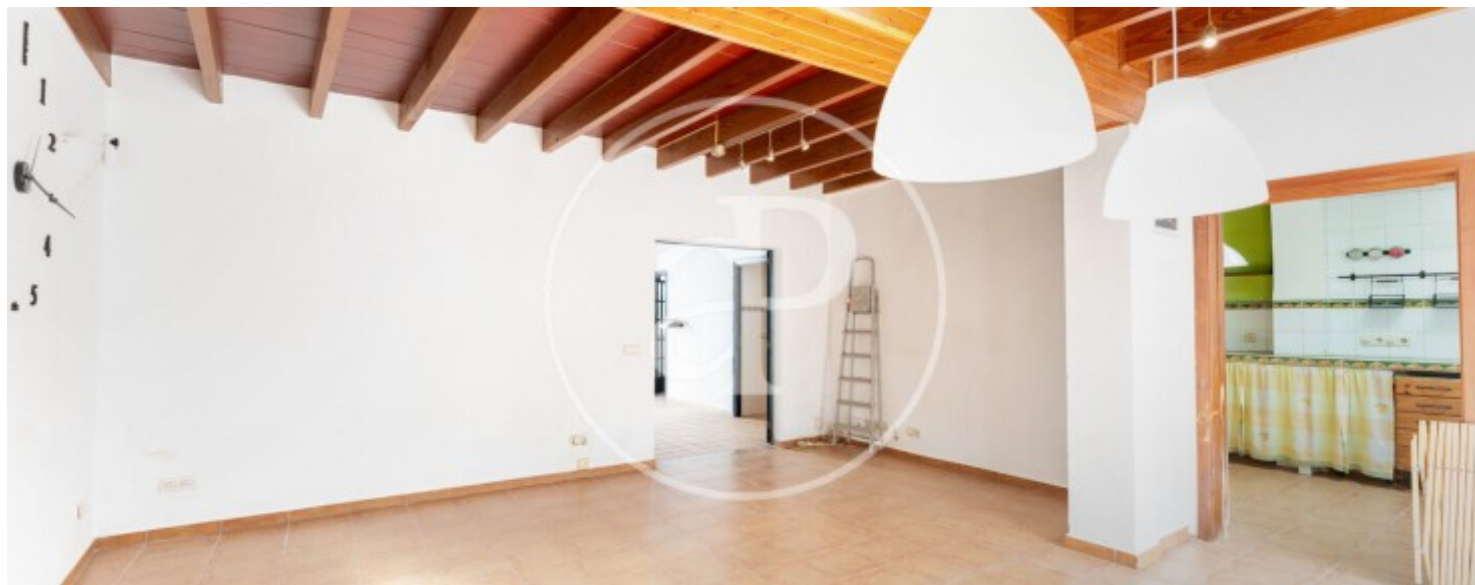
Son Espanyolet, Palma de Mallorca

REF. VPM2510002



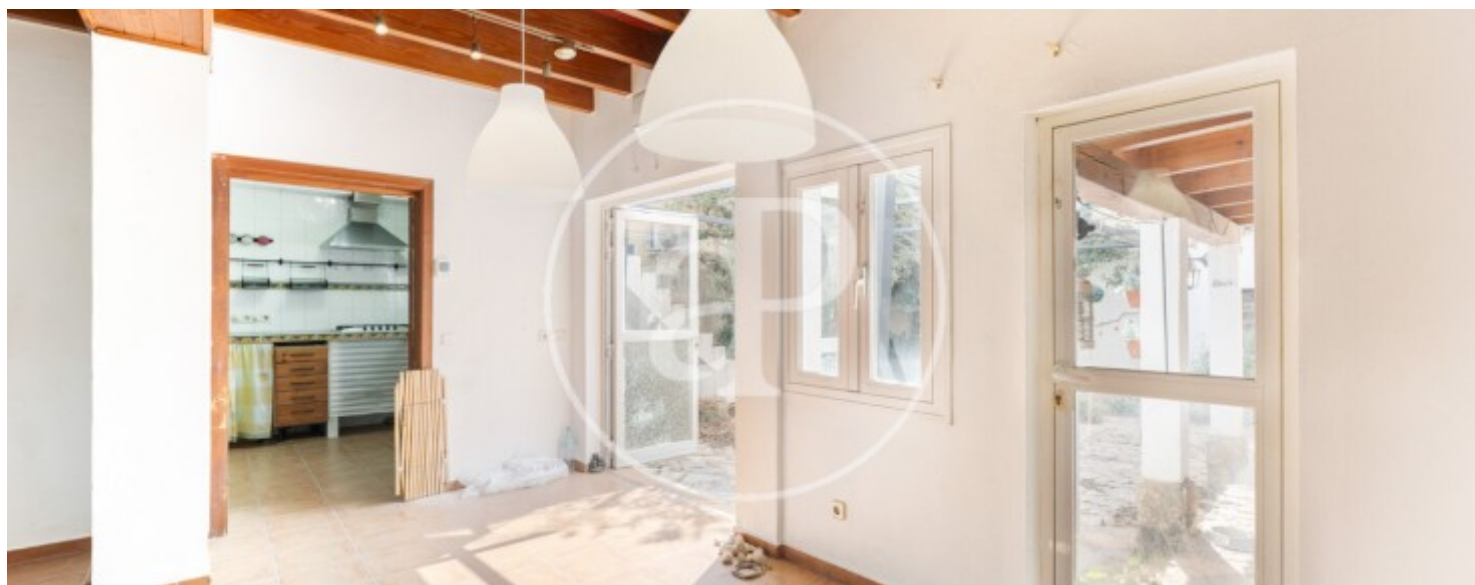
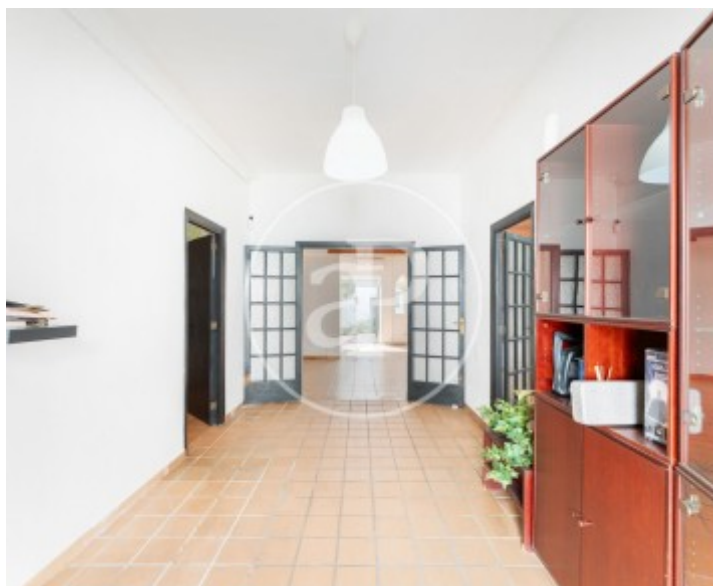
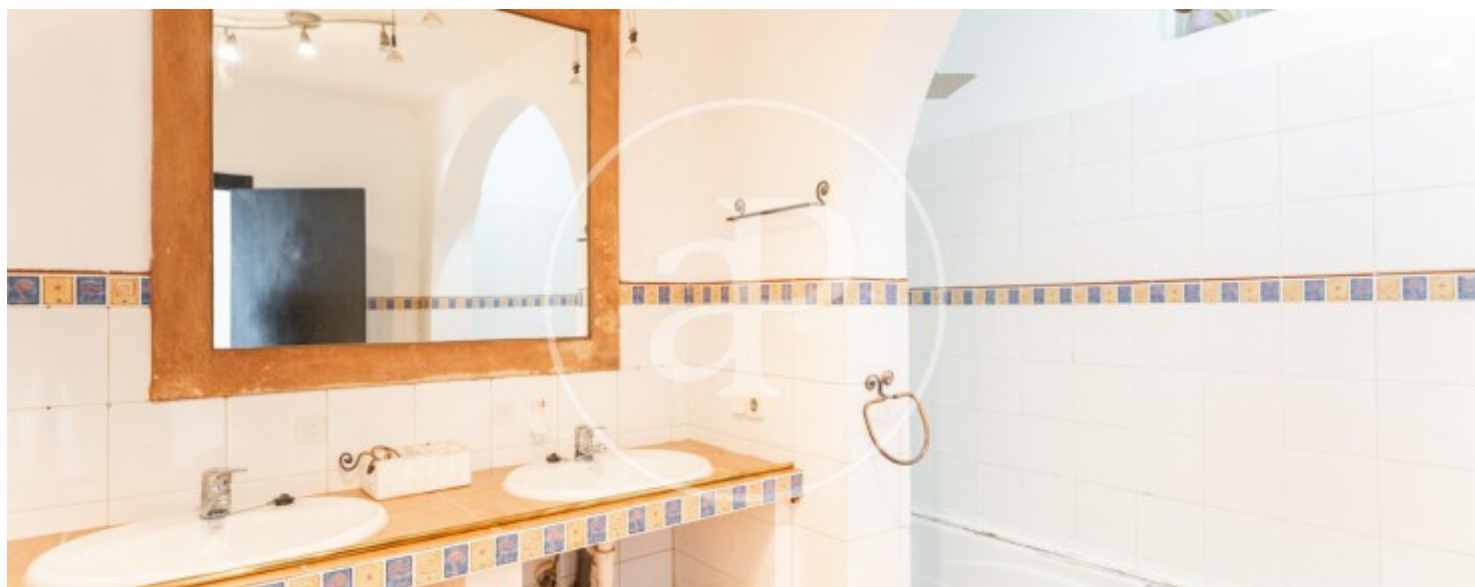
Son Espanyolet, Palma de Mallorca

REF. VPM2510002



Son Espanyolet, Palma de Mallorca

REF. VPM2510002



Son Espanyolet, Palma de Mallorca

REF. VPM2510002



The information about any property is not binding to any offer or contract. Any verbal or written declaration made by aProperties with regards to the value or condition of the property should not be considered accurate or factual. The pictures make reference to some parts of the property at the times that they were taken. The areas, dimensions and distances that are given are approximate and should be checked by the client. The images are computer generated and are just an approximate indication of the real appearance of the property; these may change at any time. The information with regards to the property may also change at any time.

For **more information** or
to make an appointment

apropertiespalma@aproperties.es
Tel: 871 16 01 60
www.aproperties.es