

Son Espanyolet, Palma de Mallorca

REF. VPM2510006-1

# Luminous penthouse for sale with Terrace in Son Espanyolet (Palma de Mallorca)

## Features

- ✓ Views
- ✓ Heating
- ✓ Furnished
- ✓ Boxroom
- ✓ AACC
- ✓ Terrace
- ✓ Backyard

Surface

**135 m<sup>2</sup>**

Bedrooms

**3**

Bathroom

**1**

Price

**599,000 €**



## A unique property for those who enjoy outdoor living without giving up interior comfort.

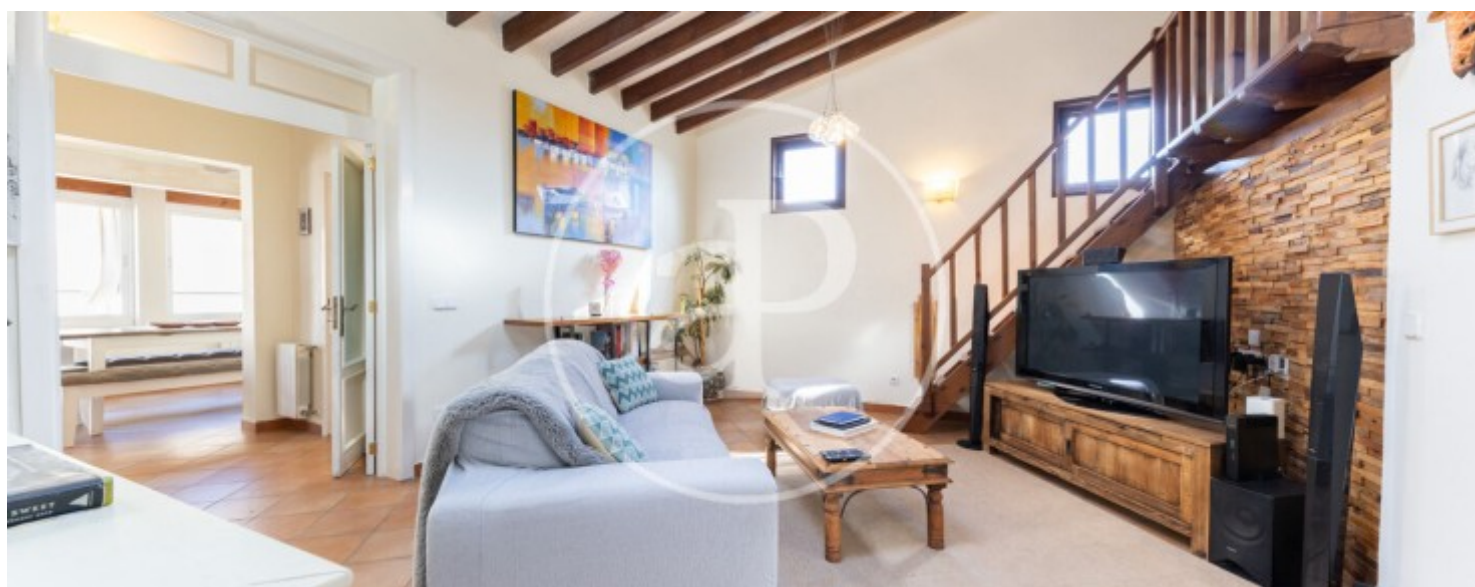
This spacious and well-maintained apartment of approximately 123 m<sup>2</sup> stands out for its brightness, high ceilings, and windows facing three directions, as well as a skylight that fills the spaces with natural light. The property has everything that makes a place feel like home: a generous entrance hall, living room with gallery, dining area with open kitchen, three bedrooms (the main one with a walk-in closet), one bathroom, pantry, and laundry/storage room. It offers two private outdoor areas: a rear garden of about 30 m<sup>2</sup> — perfect for relaxing or dining outdoors

— and a rooftop terrace of about 25 m<sup>2</sup>, offering excellent privacy, open views stretching to the Cathedral and Bellver Castle, an awning, shower, and summer kitchen. Located in the sought-after neighborhood of Son Espanyolet, just above Santa Catalina, this apartment is within walking distance of the Santa Catalina market, the old town, and all local services, restaurants, and shops. An ideal location that combines a residential atmosphere with proximity to the heart of Palma. Perfect for those seeking a charming home with generous indoor and outdoor spaces, or a second residence...

**Contact us,**  
we will be happy to assist you,  
to offer you more details and information.

Son Espanyolet, Palma de Mallorca

REF. VPM2510006-1





Son Espanyolet, Palma de Mallorca

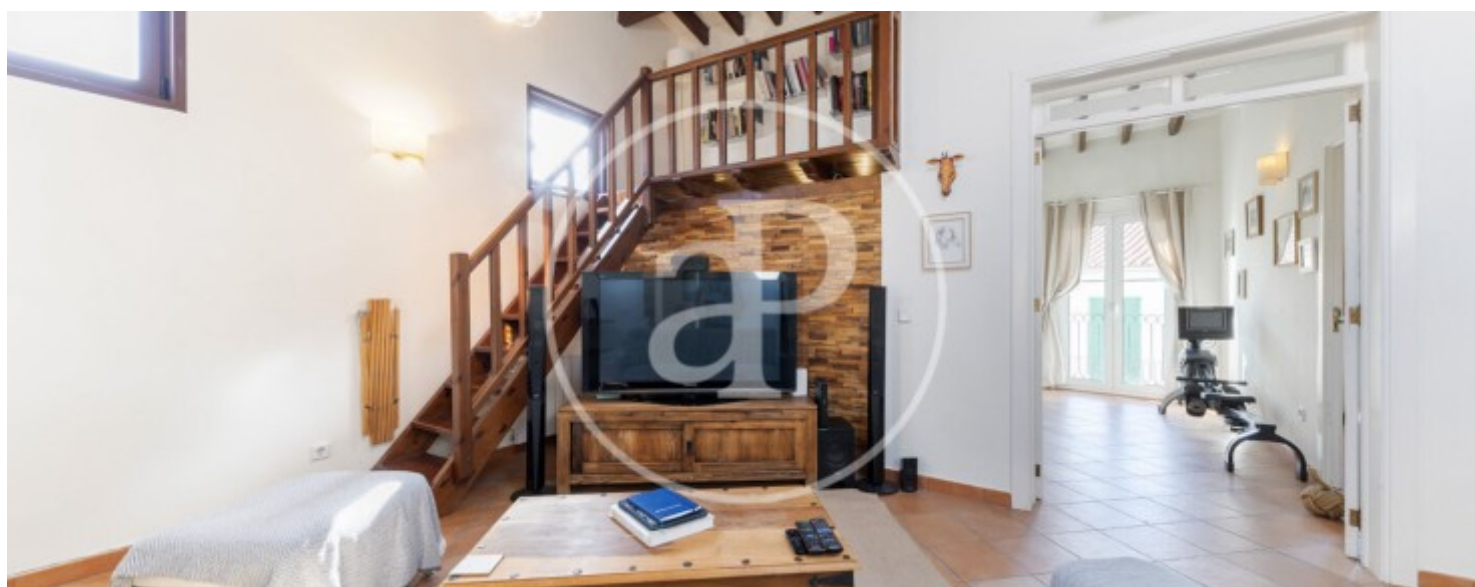
REF. VPM2510006-1





Son Espanyolet, Palma de Mallorca

REF. VPM2510006-1





Son Espanyolet, Palma de Mallorca

REF. VPM2510006-1



The information about any property is not binding to any offer or contract. Any verbal or written declaration made by aProperties with regards to the value or condition of the property should not be considered accurate or factual. The pictures make reference to some parts of the property at the times that they were taken. The areas, dimensions and distances that are given are approximate and should be checked by the client. The images are computer generated and are just an approximate indication of the real appearance of the property; these may change at any time. The information with regards to the property may also change at any time.

For **more information** or  
to make an appointment

[apropertiespalma@aproperties.es](mailto:apropertiespalma@aproperties.es)  
Tel: 871 16 01 60  
[www.aproperties.es](http://www.aproperties.es)