

Son Espanyolet, Palma de Mallorca

REF. VPM2511009

# Apartment for sale on Dragonera Street

## Features

- ✓ Views
- ✓ Heating
- ✓ AACC
- ✓ Terrace
- ✓ Lift

Surface

**100 m<sup>2</sup>**

Bedrooms

**3**

Bathrooms

**2**

Price

**599,000 €**



Bright apartment under renovation with spectacular views of the sea, the Cathedral and the entire city of Palma, located on the fifth floor of a well-maintained building with two elevators, in a quiet and excellently connected area. Located in a neighbourhood with all services within reach, supermarkets, public transport, schools, hospitals, pharmacies, etc., and with quick access to the main motorways and to highly demanded areas such as Santa Catalina. The property, currently undergoing renovation, offers 100 m<sup>2</sup> distributed into 3 bedrooms, a spacious and bright living-dining room with access to the balcony, an independent kitchen with a laundry area, 1 bathroom with a shower and 1 guest toilet. It features wooden parquet flooring, easily restorable, and a private balcony with open views of the

sea and the city. The building also has a large communal terrace offering impressive 360° panoramic views. An excellent opportunity to enjoy a home in Palma, in one of the most sought-after neighbourhoods of the city. The price includes the renovation. Do not miss the opportunity and request a visit today to discover this project!

**Contact us,**  
we will be happy to assist you,  
to offer you more details and information.

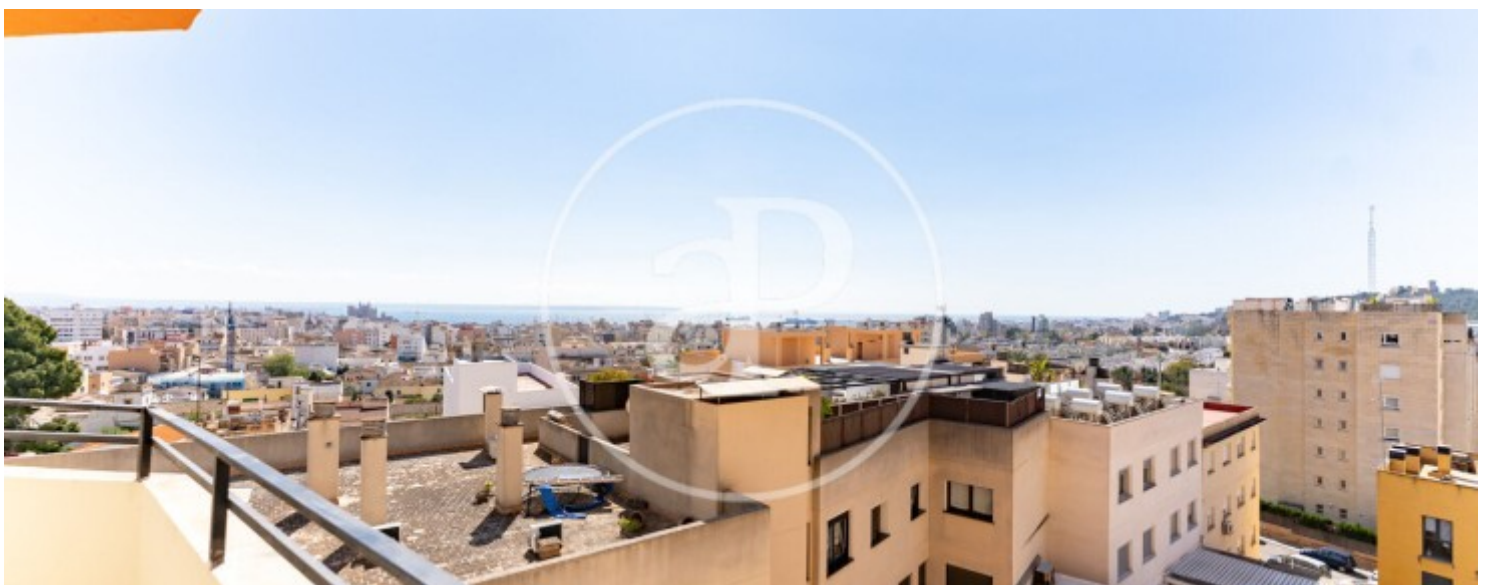
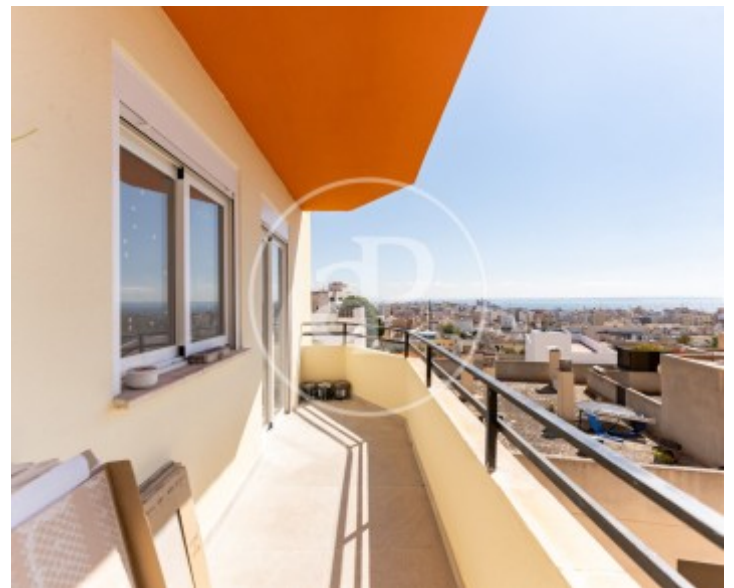
Son Espanyolet, Palma de Mallorca

REF. VPM2511009



Son Espanyolet, Palma de Mallorca

REF. VPM2511009



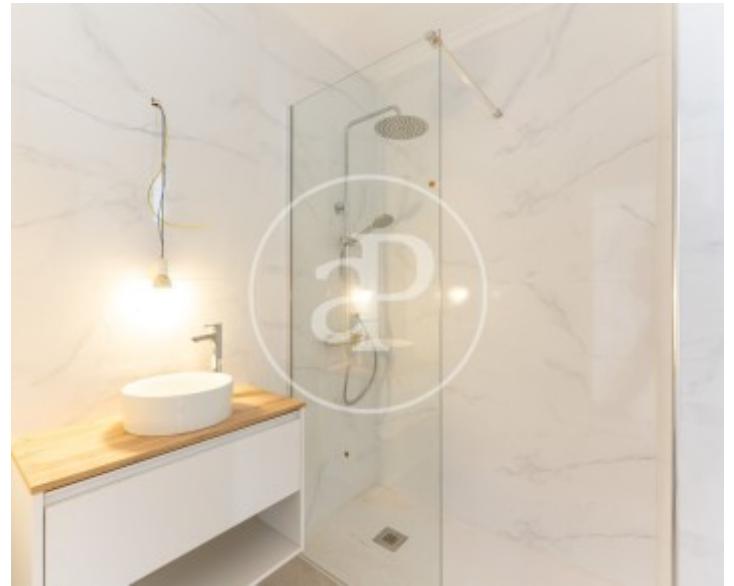
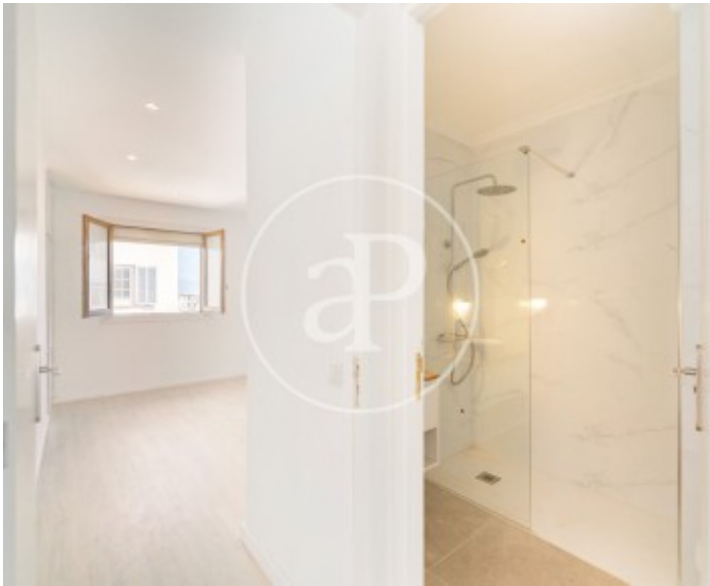
Son Espanyolet, Palma de Mallorca

REF. VPM2511009



Son Espanyolet, Palma de Mallorca

REF. VPM2511009



The information about any property is not binding to any offer or contract. Any verbal or written declaration made by aProperties with regards to the value or condition of the property should not be considered accurate or factual. The pictures make reference to some parts of the property at the times that they were taken. The areas, dimensions and distances that are given are approximate and should be checked by the client. The images are computer generated and are just an approximate indication of the real appearance of the property; these may change at any time. The information with regards to the property may also change at any time.

For **more information** or  
to make an appointment

[apropertiespalma@aproperties.es](mailto:apropertiespalma@aproperties.es)  
Tel: 871 16 01 60  
[www.aproperties.es](http://www.aproperties.es)