

Son Dureta, Palma de Mallorca

REF. VPM2210009



House for sale with pool in Son Dureta

Features

- ✓ Views
- ✓ Heating
- ✓ Furnished
- ✓ Terrace
- ✓ Backyard
- ✓ Pool
- ✓ Has parking

Price

2,300,000 €

Surface

585 m²

Bedrooms

4

Bathrooms

5



In the exclusive area around Son Dureta, just ten minutes from the centre, this stupendous villa of 585 sqm on three floors with garden and swimming pool is surrounded by a large green area that practically merges with the forest of the Bellver Castle. The ground floor houses the entrance hall, guest toilet, independent kitchen of 40 sqm with island, dining room and separate ironing room, as well as the very spacious living room with wood-burning fireplace that opens onto the main terrace and the swimming pool. On the first floor there are four large bedrooms, one of which is en suite with dressing room and bathroom with shower, and two other bathrooms with shower and bathtub. Two of the bedrooms and the terrace on this floor have views of both the Bellver castle and the cathedral. On the

lower floor there is a garage for four large cars, a toilet with two shower trays and a space ideal as a service area, office or gymnasium. The property enjoys a very special natural light in all its corners; with marble floors, ample spaces and everything in perfect condition, it is essential that you request a visit to verify the excellence of this offer. Can you imagine living here, we are waiting for your call!

Contact us,
we will be happy to assist you,
to offer you more details and information.

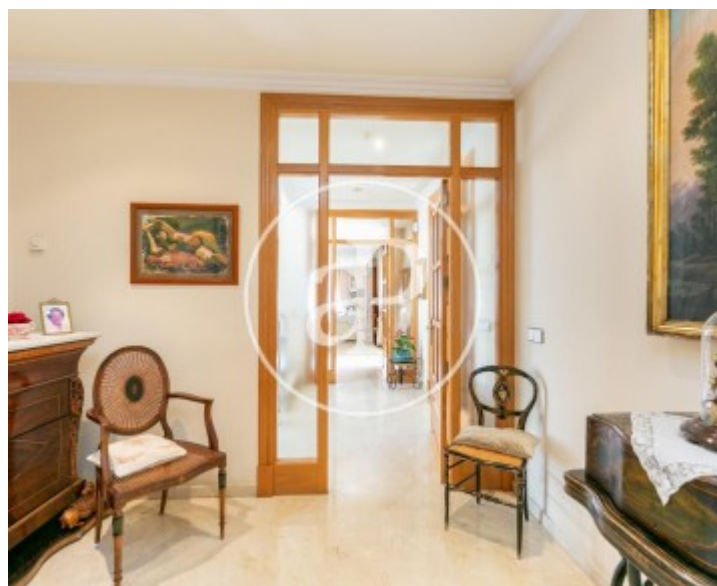
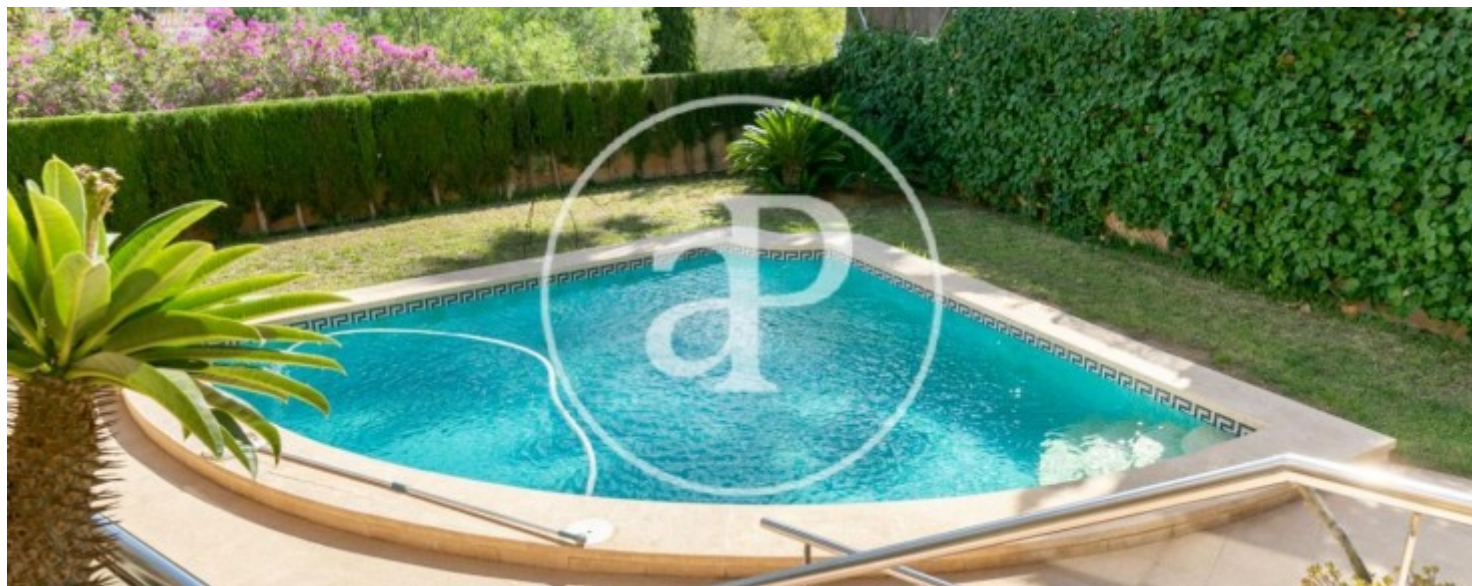
Son Dureta, Palma de Mallorca

REF. VPM2210009



Son Dureta, Palma de Mallorca

REF. VPM2210009



Son Dureta, Palma de Mallorca

REF. VPM2210009



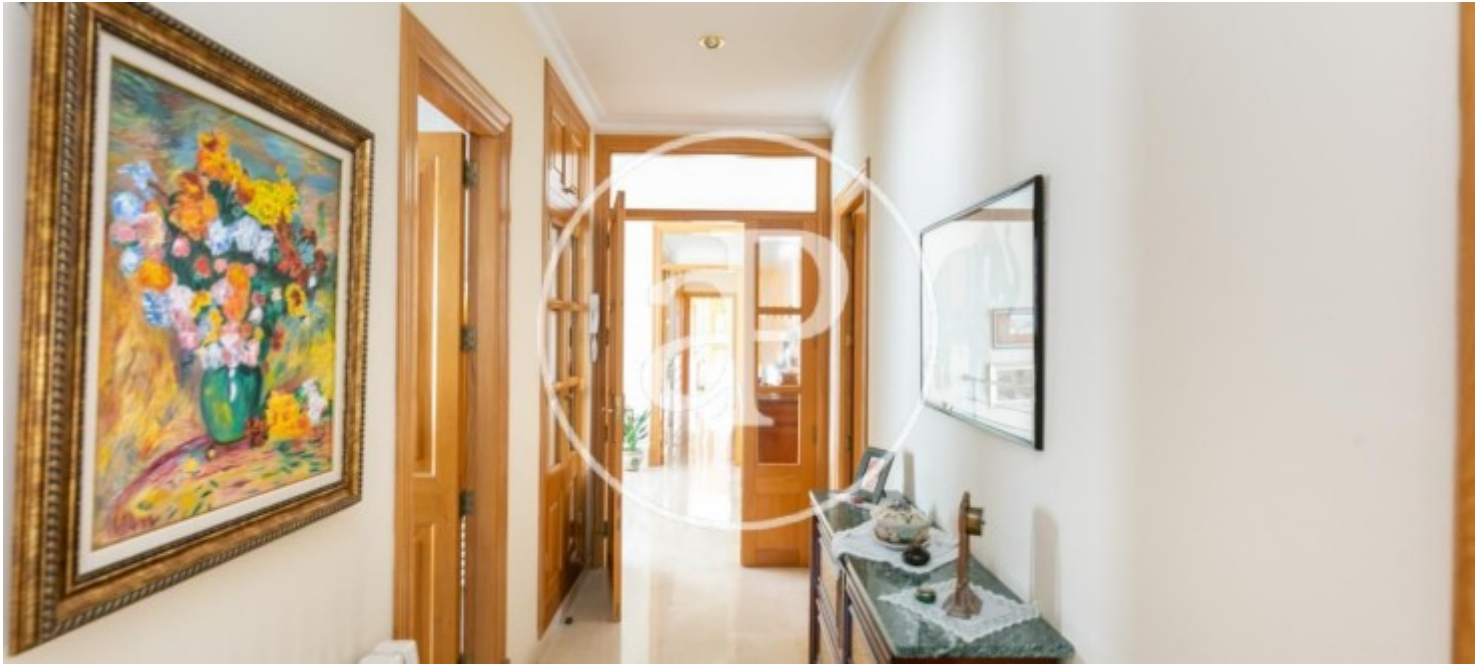


APROPERTIES
REAL ESTATE

Calle Unió 9
07001 Palma
T. 871 16 01 60
www.aproperties.es

Son Dureta, Palma de Mallorca

REF. VPM2210009



The information about any property is not binding to any offer or contract. Any verbal or written declaration made by aProperties with regards to the value or condition of the property should not be considered accurate or factual. The pictures make reference to some parts of the property at the times that they were taken. The areas, dimensions and distances that are given are approximate and should be checked by the client. The images are computer generated and are just an approximate indication of the real appearance of the property; these may change at any time. The information with regards to the property may also change at any time.



For **more information** or
to make an appointment

apropertiespalma@aproperties.es
Tel: 871 16 01 60
www.aproperties.es