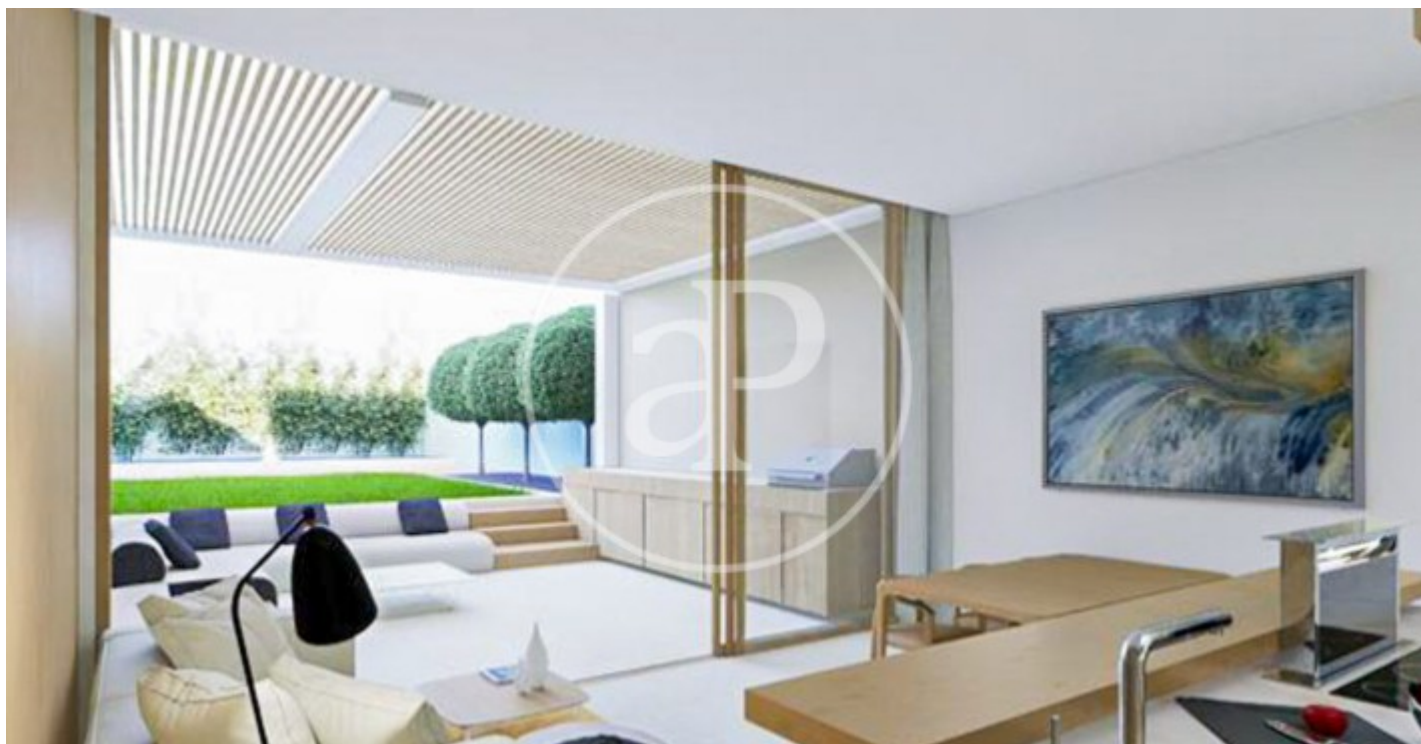


(Son Armadams)

Ref: ONPM2309006



## *New developments for sale in Son Armadams*

This small new development for sale is located in the residential area of Son Armadams, a stone's throw from the Paseo Marítimo near the Bellver Castle and a few minutes walk from Santa Catalina, where you can enjoy a wide range of restaurants and leisure activities, surrounded by all services, and very well connected with all types of transport, Community composed by only three neighbours and three different typologies with an avant-garde design, luminous and functional, with high qualities, project foreseen to be finished in the first quarter of 2025. Duplex flat on the ground floor, with garden and private swimming pool composed of a spacious living-dining room with integrated kitchen, furnished and with white goods, guest toilet and laundry room, the staircase leads to the upper floor where there are three bedrooms, one of which is en suite with views to its own garden and the other two share a bathroom with shower, with large windows to a very quiet street. First floor flat with two bedrooms and two complete bathrooms, one of them en suite, living-dining room with french balcony, fully fitted kitchen. Duplex penthouse with three bedrooms, one of them en-suite, two comp [...]

Palma de Mallorca / Son Armadams

Unit 1

Completion Q1 2025

### **FEATURES**

Surface 84 m²

2 Rooms

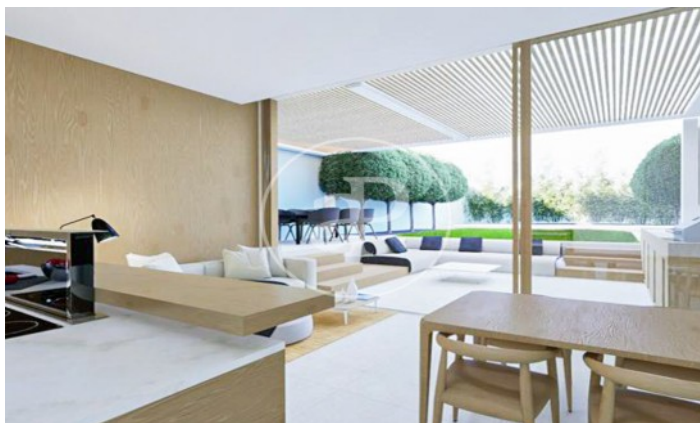
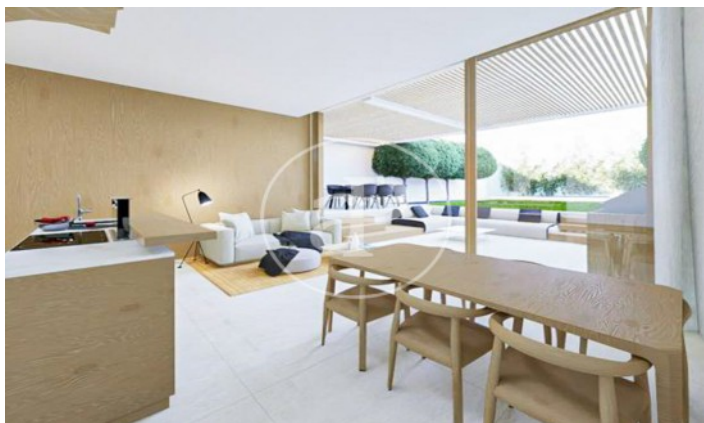
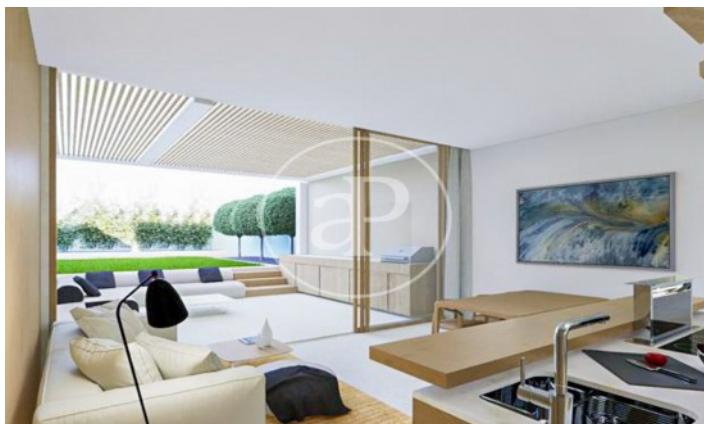
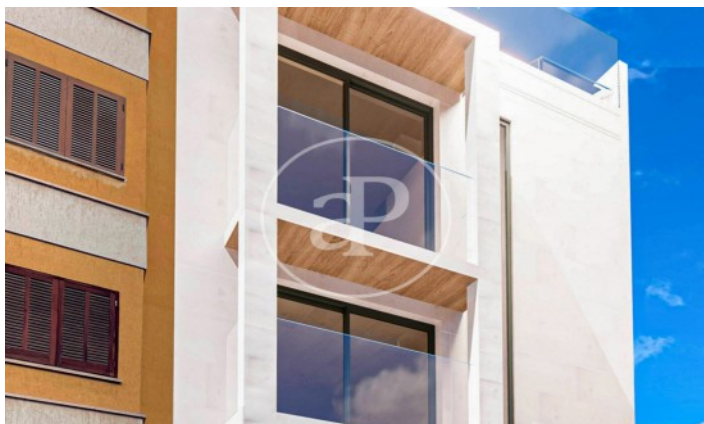
2 Toilets

- ✓ Heating
- ✓ Boxroom
- ✓ AACC
- ✓ Backyard
- ✓ Pool
- ✓ Lift
- ✓ Has parking

Price 510,000 €

(Son Armadams)

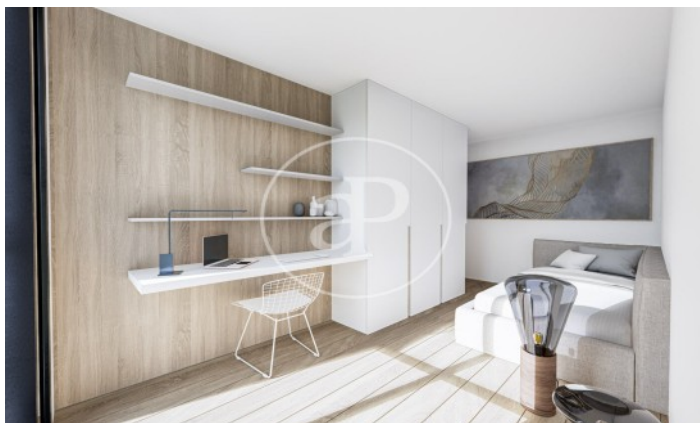
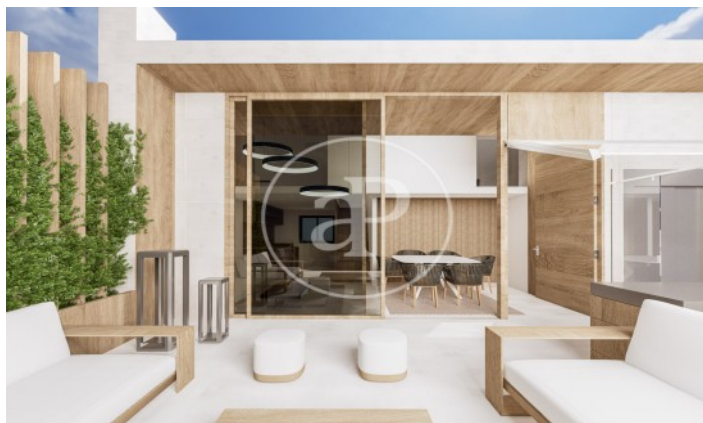
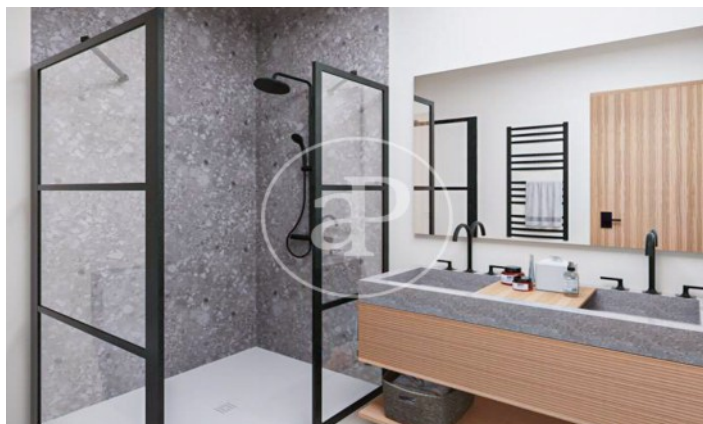
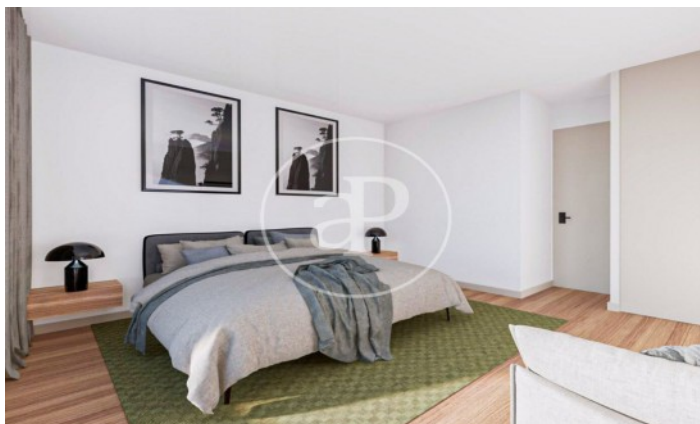
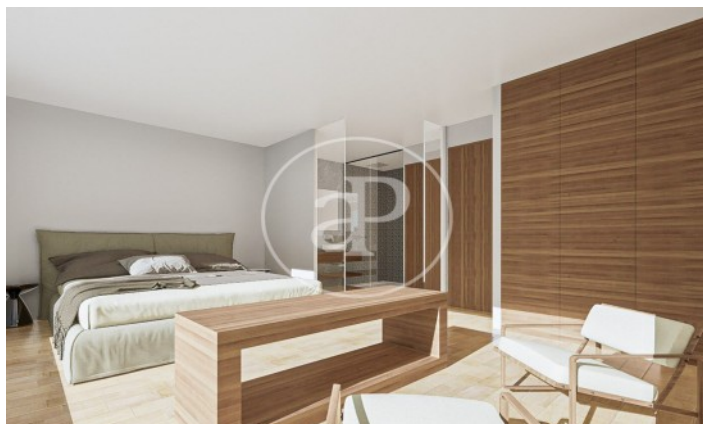
Ref: ONPM2309006





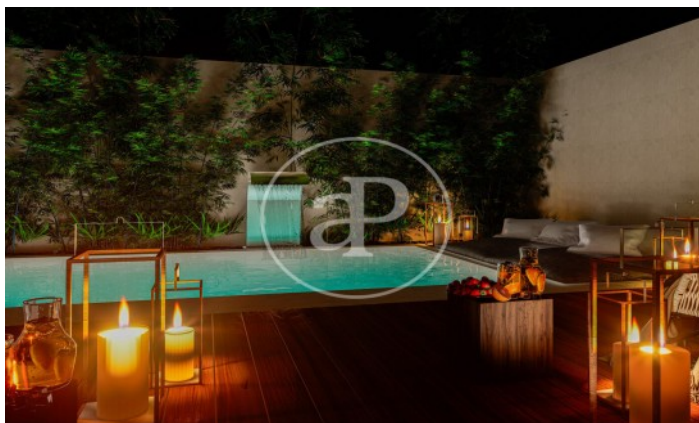
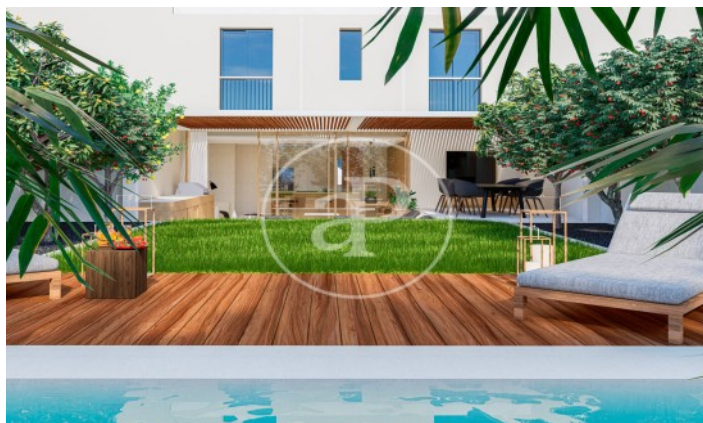
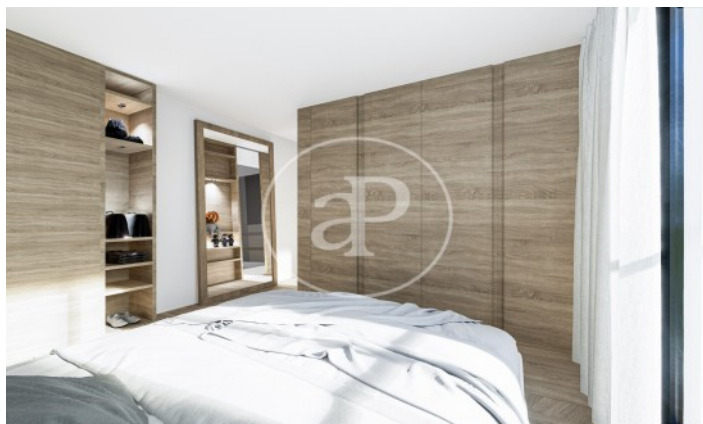
(Son Armadams)

Ref: ONPM2309006



(Son Armadams)

Ref: ONPM2309006



The information about any property is not binding to any offer or contract. Any verbal or written declaration made by aProperties with regards to the value or condition of the property should not be considered accurate or factual. The pictures make reference to some parts of the property at the times that they were taken. The areas, dimensions and distances that are given are approximate and should be checked by the client. The images are computer generated and are just an approximate indication of the real appearance of the property; these may change at any time. The information with regards to the property may also change at any time.

Contact us today for more information or to arrange a viewing

Tel: 871 16 01 60

[apropertiespalma@aproperties.es](mailto:apropertiespalma@aproperties.es)

<https://www.aproperties.es>