



(Son Armadams)

Ref: ONPM2306004



## *New built penthouse for sale in El Terreno*

Exclusive high-end apartments in El Terreno Discover luxury and elegance in the heart of El Terreno with our new-build homes designed for those seeking the best. This residential enclave, highly appreciated by the Nordic community, combines style, comfort and a privileged location. Penthouse, an oasis of exclusivity and comfort This impressive penthouse redefines the modern lifestyle, where the living room, kitchen and the terrace merge into a space designed to enjoy and relax. The 74 m<sup>2</sup> roof top terrace with a private pool and a seaview becomes a true personal sanctuary with endless possibilities: from pergolas and chill-out areas to the addition of a kitchen to enjoy every day to fullest. The property has two bedrooms, with the master bedroom being a luxury retreat, with a spectacular en-suite bathroom that combines contemporary design and functionality. Design and top-quality finishes Every detail has been carefully thought out to offer a sophisticated and welcoming atmosphere. Modern and elegant materials have been selected by interior design professionals, guaranteeing exceptional finishes. Large windows flood each room with natural light, accentuating the feeling [...]

Palma de Mallorca / Son Armadams

Unit 1 A

Completion Q1 2025

### **FEATURES**

Surface 107 m<sup>2</sup> / 32 m<sup>2</sup> terrace

2 Rooms

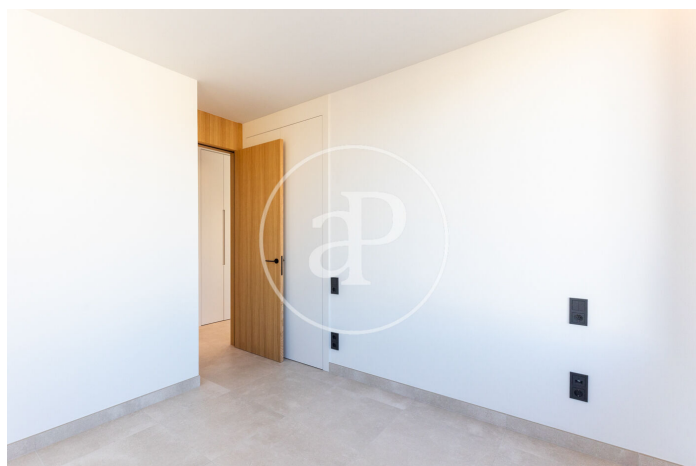
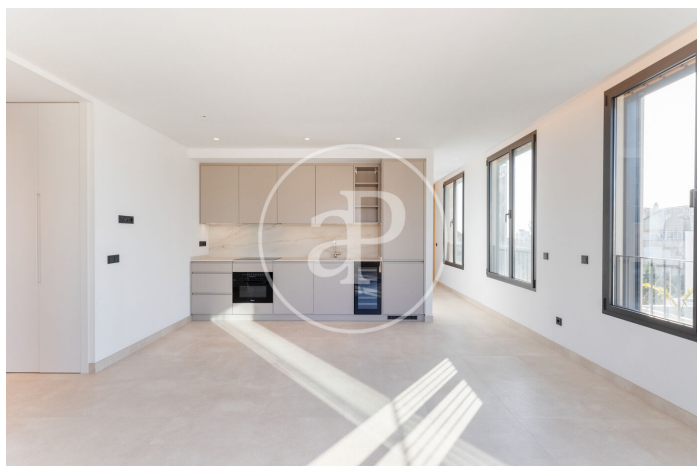
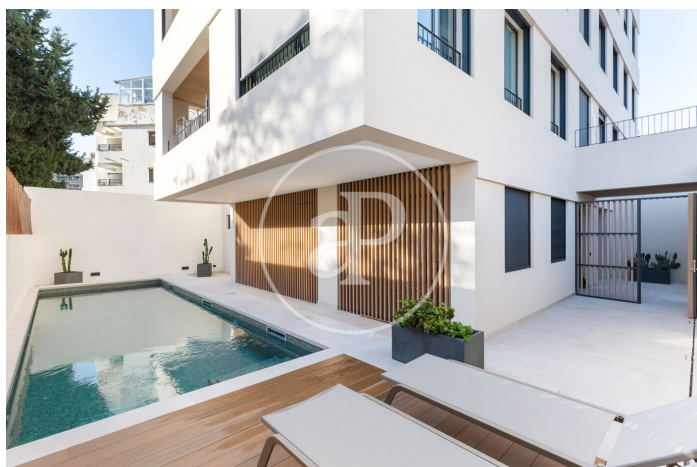
2 Toilets

- ✓ Views
- ✓ Heating
- ✓ Boxroom
- ✓ AACC
- ✓ Terrace
- ✓ Backyard
- ✓ Pool
- ✓ Lift
- ✓ Has parking



(Son Armadams)

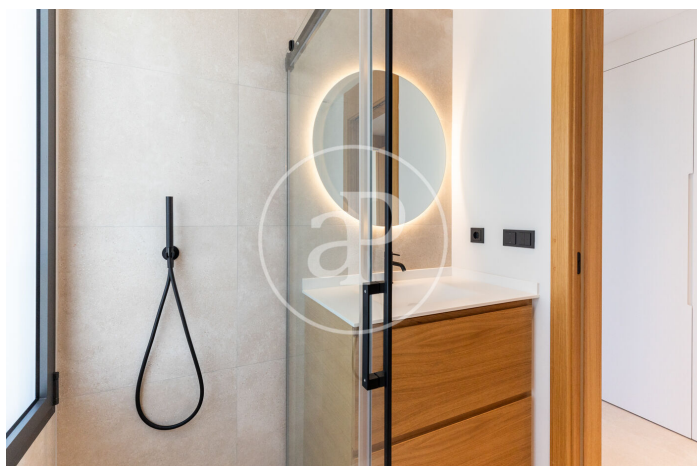
Ref: ONPM2306004





(Son Armadams)

Ref: ONPM2306004





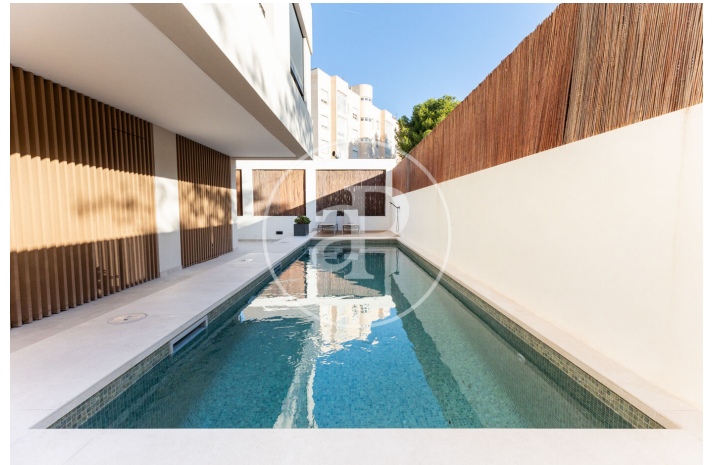
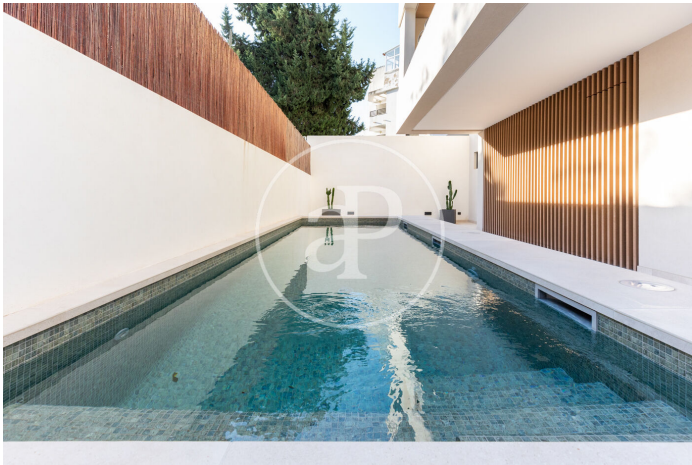
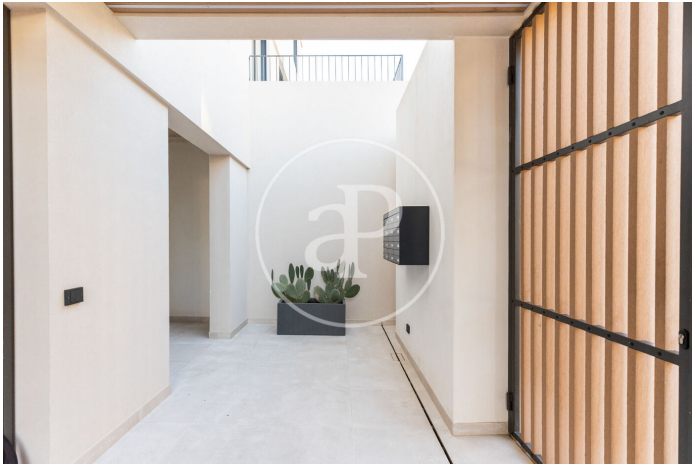


**APROPERTIES**  
REAL ESTATE

Calle Unió 9  
Tel: 871 16 01 60  
<https://www.aproperties.es>

**(Son Armadams)**

*Ref: ONPM2306004*



The information about any property is not binding to any offer or contract. Any verbal or written declaration made by aProperties with regards to the value or condition of the property should not be considered accurate or factual. The pictures make reference to some parts of the property at the times that they were taken. The areas, dimensions and distances that are given are approximate and should be checked by the client. The images are computer generated and are just an approximate indication of the real appearance of the property; these may change at any time. The information with regards to the property may also change at any time.

Contact us today for more information or to arrange a viewing

Tel: 871 16 01 60 [apropertiespalma@aproperties.es](mailto:apropertiespalma@aproperties.es) <https://www.aproperties.es>