

(Son Armadams)

Ref: ONPM2309006



## *EXCLUSIVE New developments for sale in Son Armadans*

Address: Calle Roger de Llúria 14 – Palma de Mallorca Just steps away from the Paseo Marítimo and very close to Bellver Castle, this new development is located in one of Palma's most sought-after residential areas. Enjoy the peace and elegance of Son Armadans, with all services within reach, excellent public transport connections, and only a short walk from the vibrant Santa Catalina district—famous for its wide variety of restaurants and leisure options. A Unique and Exclusive Project This boutique development consists of just three residences, each designed with a contemporary, functional, and light-filled style, using top-quality materials. Three unique layouts, tailored to suit a range of lifestyles. Construction start: Mid-2025, Estimated completion: End of 2027 Available Properties: 1.) Ground Floor Duplex with Garden and Private Pool – € 995,000 Built area: approx. 100 m<sup>2</sup> + 25 m<sup>2</sup> porch Bright living-dining area with open-plan kitchen, fully furnished and equipped with high-end appliances Guest toilet 25 m<sup>2</sup> porch with access to a private 120 m<sup>2</sup> garden and swimming pool Upper floor with 3 bedrooms, [...]

Palma de Mallorca / Son Armadams  
Unit 3  
Completion Q4 2026

### FEATURES

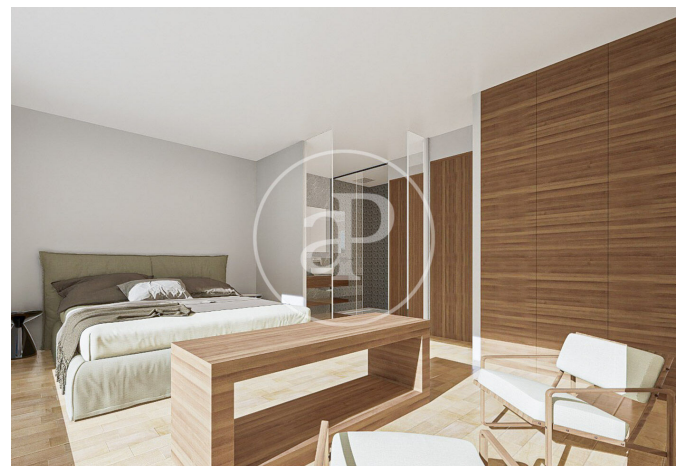
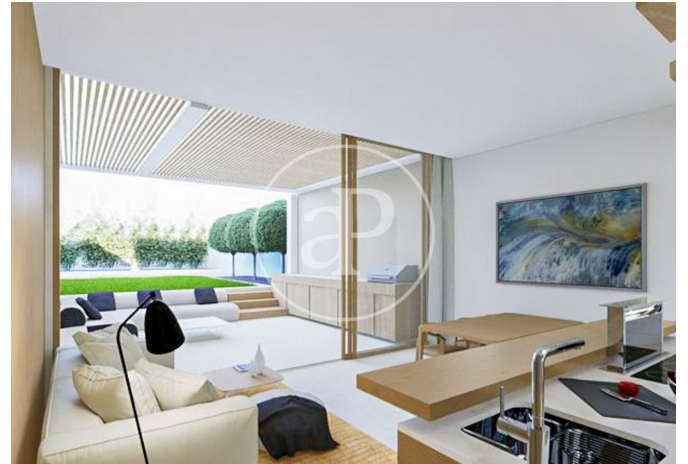
Surface 79 m<sup>2</sup> / 24 m<sup>2</sup> terrace  
3 Rooms  
2 Toilets 1 Restrooms

- ✓ Heating
- ✓ Boxroom
- ✓ AACC
- ✓ Terrace
- ✓ Backyard
- ✓ Pool
- ✓ Lift
- ✓ Has parking

Price 895,000 €

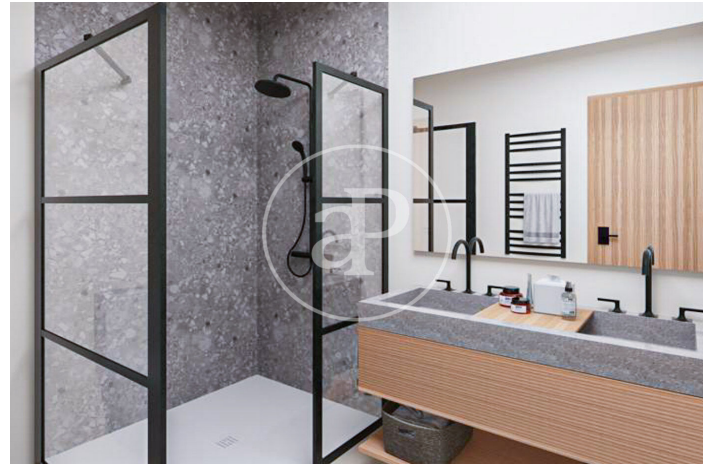
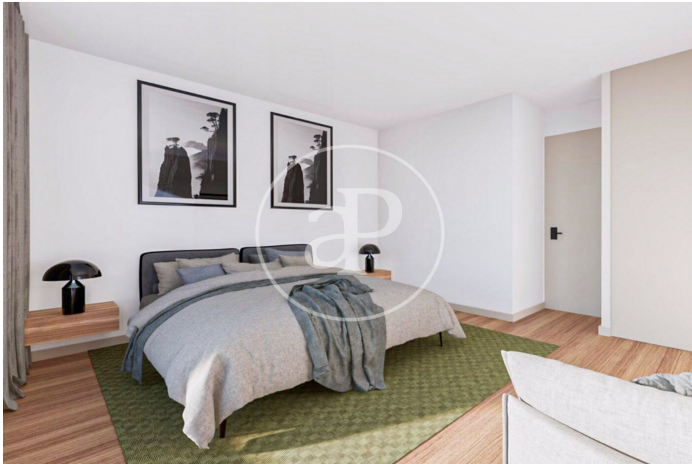
(Son Armadams)

Ref: ONPM2309006



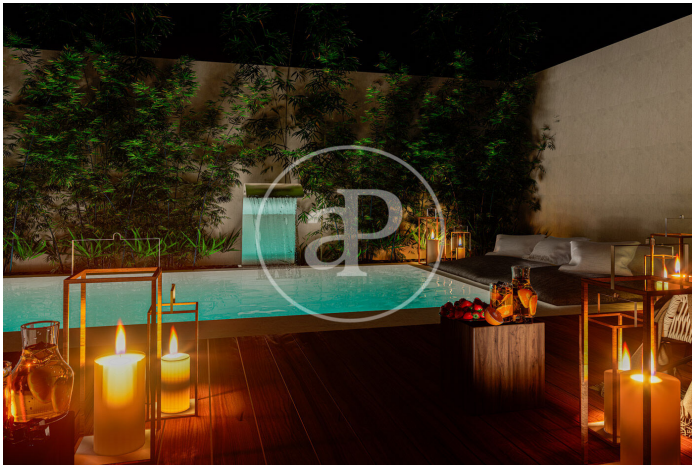
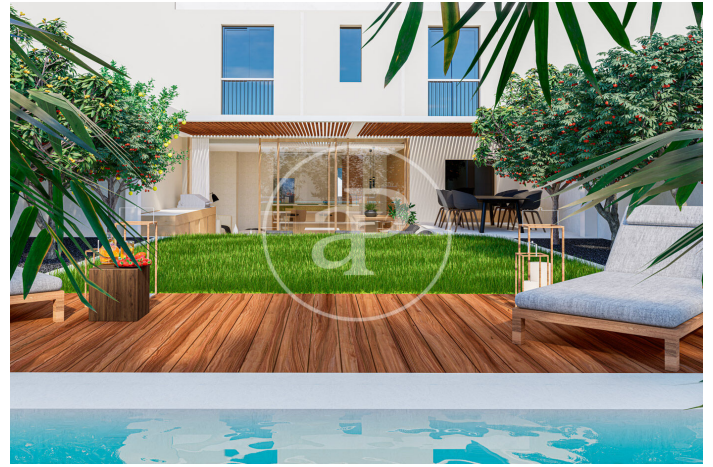
(Son Armadams)

Ref: ONPM2309006



(Son Armadams)

Ref: ONPM2309006



The information about any property is not binding to any offer or contract. Any verbal or written declaration made by aProperties with regards to the value or condition of the property should not be considered accurate or factual. The pictures make reference to some parts of the property at the times that they were taken. The areas, dimensions and distances that are given are approximate and should be checked by the client. The images are computer generated and are just an approximate indication of the real appearance of the property; these may change at any time. The information with regards to the property may also change at any time.

Contact us today for more information or to arrange a viewing

Tel: 871 16 01 60 [apropertiespalma@aproperties.es](mailto:apropertiespalma@aproperties.es) <https://www.aproperties.es>