

(Son Armadams)

Ref: ONPM2309006



EXCLUSIVE New developments for sale in Son Armadans

Address: Calle Roger de Llúria 14 – Palma de Mallorca Just steps away from the Paseo Marítimo and very close to Bellver Castle, this new development is located in one of Palma's most sought-after residential areas. Enjoy the peace and elegance of Son Armadans, with all services within reach, excellent public transport connections, and only a short walk from the vibrant Santa Catalina district—famous for its wide variety of restaurants and leisure options. A Unique and Exclusive Project This boutique development consists of just three residences, each designed with a contemporary, functional, and light-filled style, using top-quality materials. Three unique layouts, tailored to suit a range of lifestyles. Construction start: Mid-2025, Estimated completion: End of 2026 Available Properties: 1.) Ground Floor Duplex with Garden and Private Pool – € 940,000 Built area: approx. 100 m² + 25 m² porch Bright living-dining area with open-plan kitchen, fully furnished and equipped with high-end appliances Guest toilet 25 m² porch with access to a private 120 m² garden and swimming pool Upper floor with 3 bedrooms, [...]

Palma de Mallorca / Son Armadams

Surface
60 m² - 93 m²
Units
3
Completion
Q4 2026

- ✓ Heating
- ✓ Boxroom
- ✓ AACC
- ✓ Terrace
- ✓ Backyard
- ✓ Pool
- ✓ Lift
- ✓ Has parking

Price from 535,000 €

(Son Armadams)

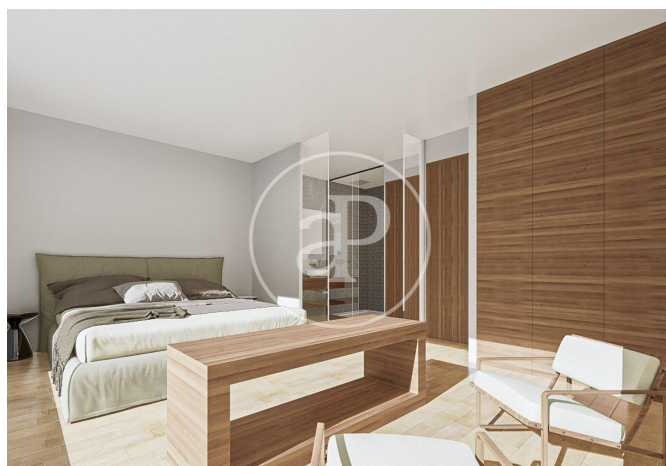
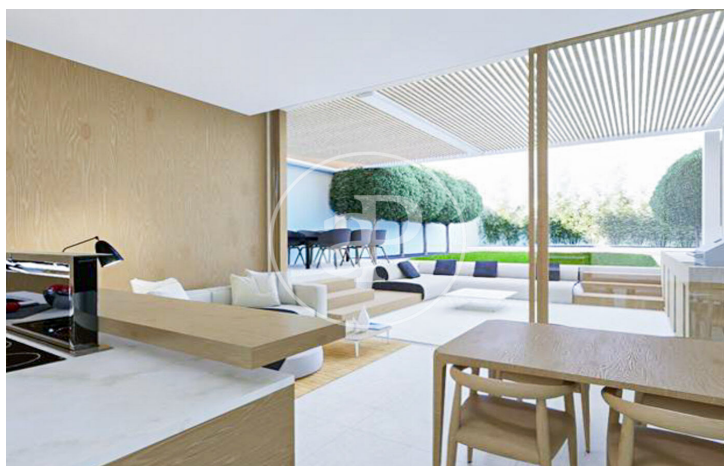
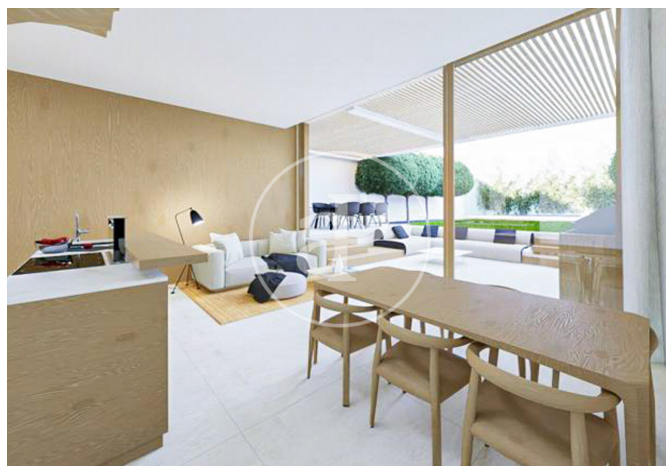
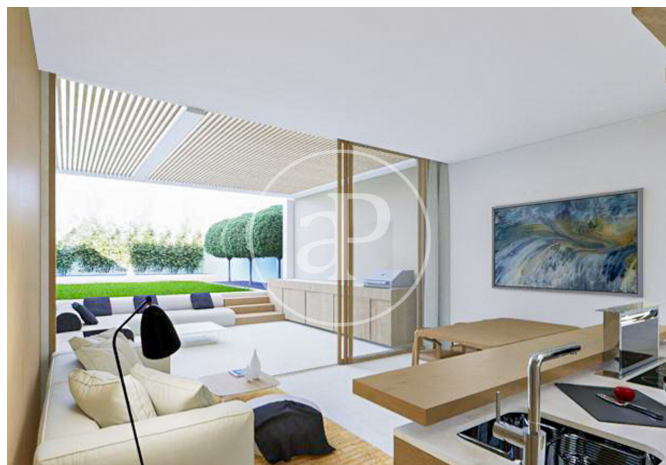
Ref: ONPM2309006

Units in this development

Type	Unit	Surface	Terrace	Bedrooms	Bathrooms	Price	State
Duplex	Bajo planta baja	93 m ²	120 m ²	3	3	€ 940,000	Available
Flat	-	60 m ²	2.60 m ²	2	2	€ 535,000	Available
Duplex	-	79 m ²	1 (24 m ²)	3	3	€ 870,000	Available

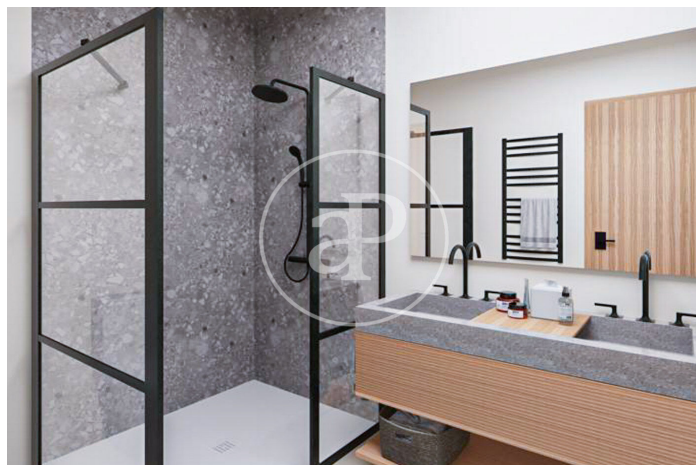
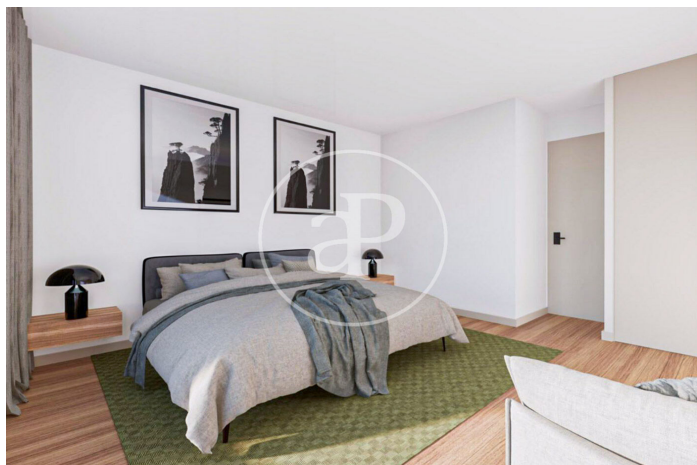
(Son Armadams)

Ref: ONPM2309006



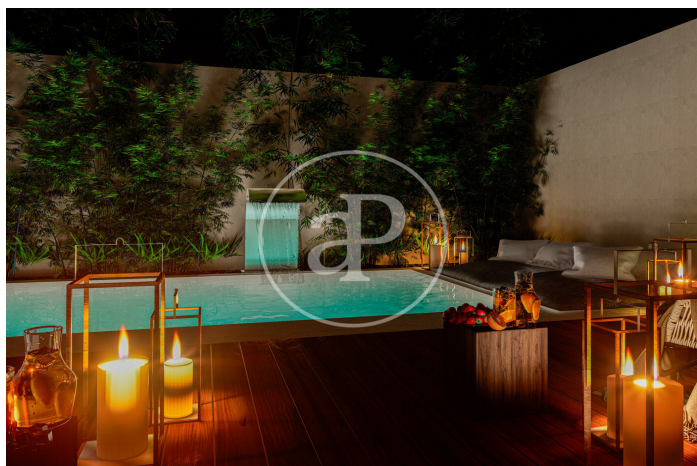
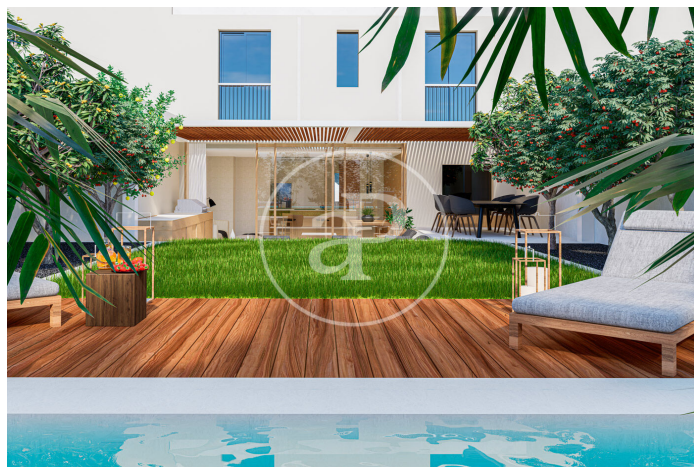
(Son Armadams)

Ref: ONPM2309006



(Son Armadams)

Ref: ONPM2309006



The information about any property is not binding to any offer or contract. Any verbal or written declaration made by aProperties with regards to the value or condition of the property should not be considered accurate or factual. The pictures make reference to some parts of the property at the times that they were taken. The areas, dimensions and distances that are given are approximate and should be checked by the client. The images are computer generated and are just an approximate indication of the real appearance of the property; these may change at any time. The information with regards to the property may also change at any time.

Contact us today for more information or to arrange a viewing

Tel: 871 16 01 60 apropertiespalma@aproperties.es <https://www.aproperties.es>