

(Son Armadams)

Ref: ONPM2109002



## *New Build Apartments with views of Mediterranean*

Located on Paseo Marítimo de Palma in front of its marina and, a few minutes from the city center, the development has been designed to maximize the exterior panoramic view towards the sea and the Gothic Cathedral, obtaining maximum natural lighting due to its privileged Southeast orientation. From its large terraces you can enjoy the sun and the sea breeze on the seafront. The Project is distributed in 5 levels with only 2 dwellings per floor, in typologies of 2 and 3 bedrooms with en suite bathrooms. The homes are distributed in spacious and bright spaces, combining the elegance and exclusivity of the design with a high quality of finishes and facilities, taking care of even the smallest detail. The interiors and exteriors of the houses have been designed with materials typical of the Island. A unique design, with style and of the best quality, which respects the artisan tradition of the city. Located 5 minutes from the city center, the Promotion allows you to enjoy emblematic places full of life such as the Gothic Cathedral of Palma, the Bellver Castle or the Plaza Mayor. Thanks to the strategic location of the complex and its good communication, you can easily access the wonderful beaches of the island, as well as the port of Palma.

Palma de Mallorca / Son Armadams

Unit 2 2<sup>a</sup>

Completion Q3 2021

### **FEATURES**

Surface 112 m<sup>2</sup> / 38 m<sup>2</sup> terrace

2 Rooms

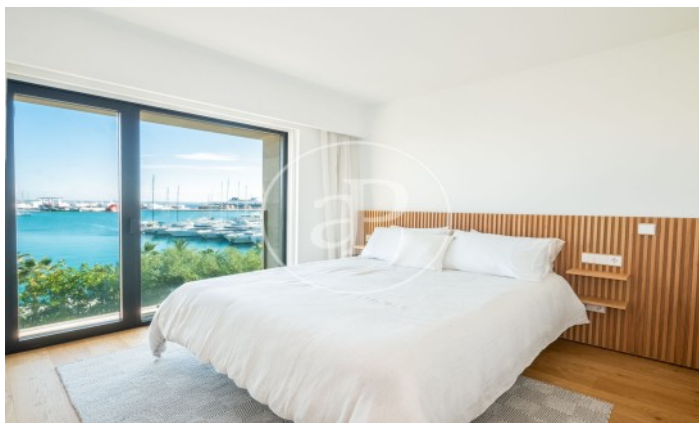
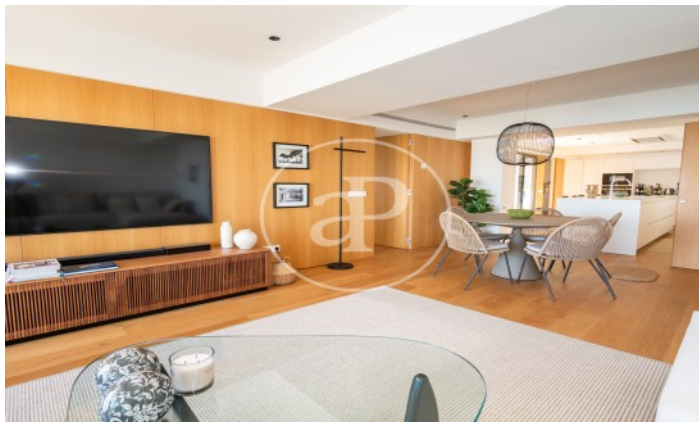
2 Toilets

- ✓ Views
- ✓ Heating
- ✓ AACC
- ✓ Terrace
- ✓ Lift

Price 1,100,000 €

(Son Armadams)

Ref: ONPM2109002





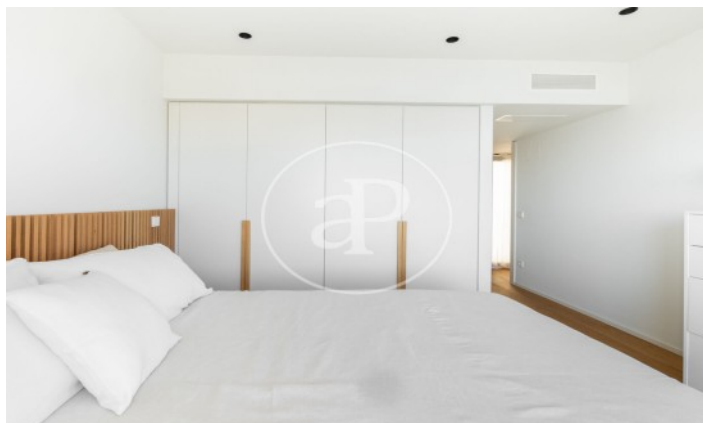
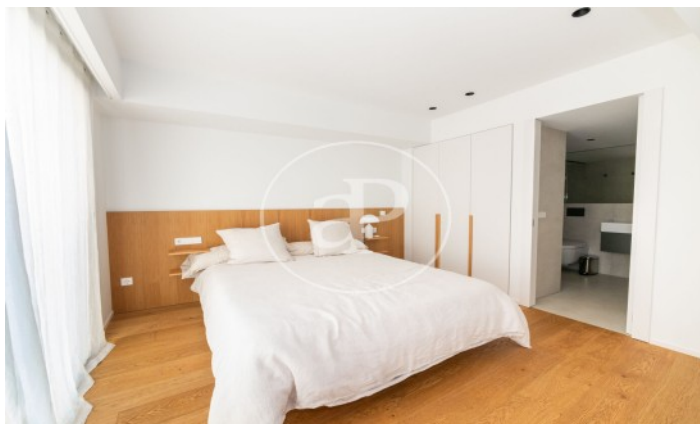
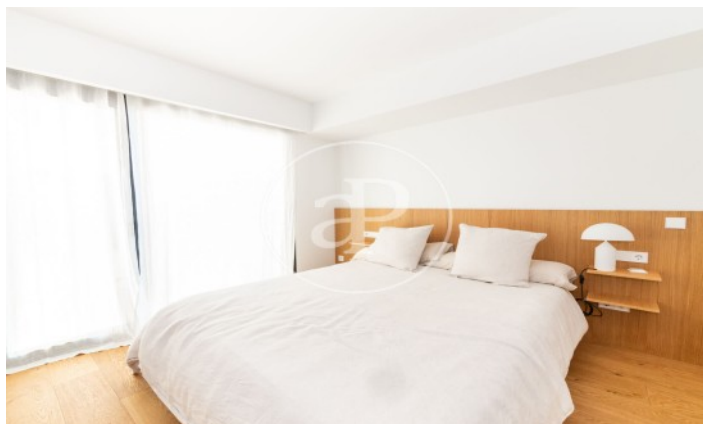
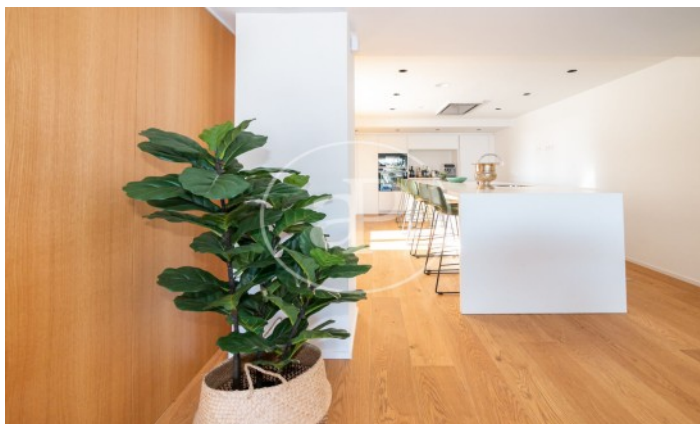
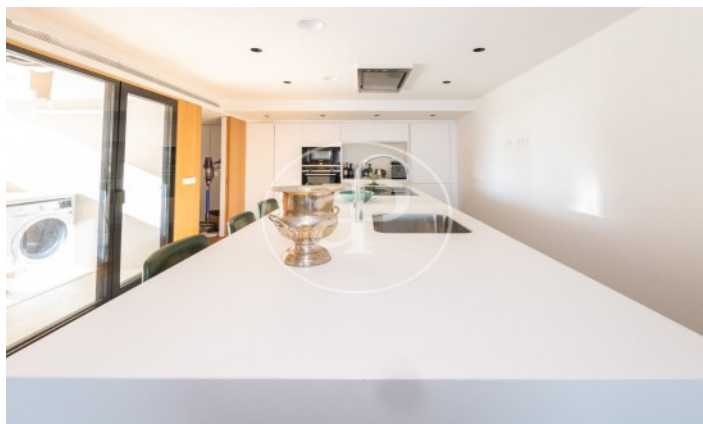
(Son Armadams)

Ref: ONPM2109002



(Son Armadams)

Ref: ONPM2109002



The information about any property is not binding to any offer or contract. Any verbal or written declaration made by aProperties with regards to the value or condition of the property should not be considered accurate or factual. The pictures make reference to some parts of the property at the times that they were taken. The areas, dimensions and distances that are given are approximate and should be checked by the client. The images are computer generated and are just an approximate indication of the real appearance of the property; these may change at any time. The information with regards to the property may also change at any time.

Contact us today for more information or to arrange a viewing

Tel: 871 16 01 60

[apropertiespalma@aproperties.es](mailto:apropertiespalma@aproperties.es)

<https://www.aproperties.es>