

Son Armadams, Palma de Mallorca

REF. VPM2212031



House for sale with garden in the heart of Son Armadams

Features

- ✓ Heating
- ✓ Terrace
- ✓ Backyard

Price

895,000 €

Surface

177 m²

Bedrooms

4

Bathrooms

2



As soon as you enter the property, you are greeted by a comfortable living room to your right and to the left a large rustic kitchen with dining area, all in open space.

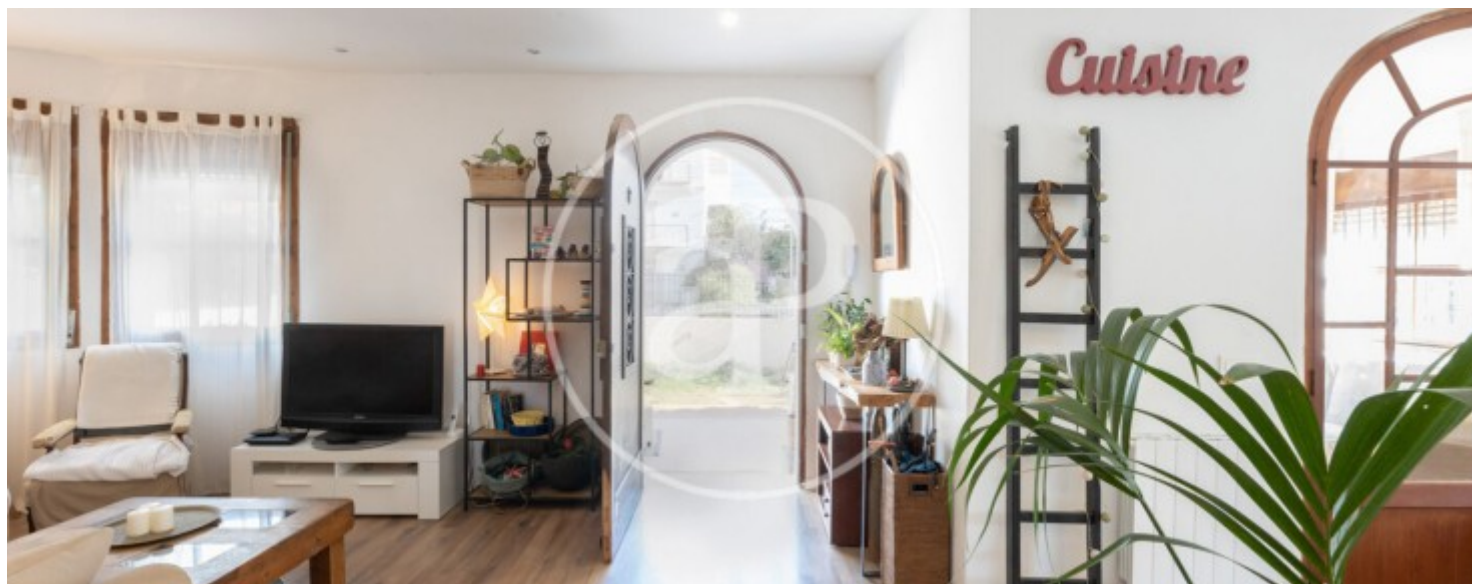
The private area is accessed through a hallway in front of the main door which ends with a bathroom on the left followed by a bedroom. Straight ahead is another bedroom, in the corner to the right is the third bedroom, next to a bathroom and then the master bedroom with its own entrance to this bathroom and dressing room. A complete interior reform was carried out in 2019. Its rooms have large windows that give a powerful luminosity to the whole house. Radiators with central heating with

City Gas. The garden has approximately 170 sqm, south facing and with real possibility and plenty of space to build a swimming pool. This property is surprising for its incredible privacy, located in the heart of a Palma neighbourhood integrated in the same city. The location is exceptional, in the heart of Son Armadams, 5 minutes walking distance to the well known "Palma Sport & Tennis Club", and Santa Catalina with its wide range of restaurants and bars, as well as the beautiful promenade of the harbour at 10 minutes walking distance. Supermarkets, big and small,...

Contact us,
we will be happy to assist you,
to offer you more details and information.

Son Armadams, Palma de Mallorca

REF. VPM2212031



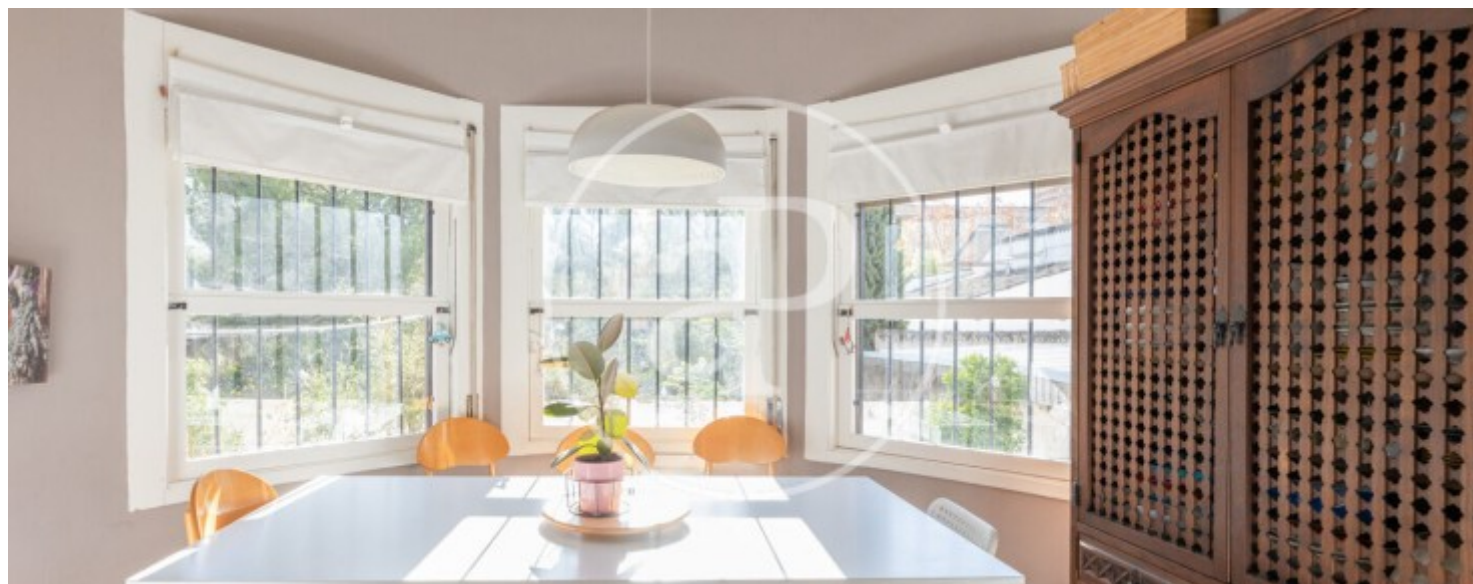
Son Armadams, Palma de Mallorca

REF. VPM2212031



Son Armadams, Palma de Mallorca

REF. VPM2212031





APROPERTIES
REAL ESTATE

Calle Unió 9
07001 Palma
T. 871 16 01 60
www.aproperties.es

Son Armadams, Palma de Mallorca

REF. VPM2212031



The information about any property is not binding to any offer or contract. Any verbal or written declaration made by aProperties with regards to the value or condition of the property should not be considered accurate or factual. The pictures make reference to some parts of the property at the times that they were taken. The areas, dimensions and distances that are given are approximate and should be checked by the client. The images are computer generated and are just an approximate indication of the real appearance of the property; these may change at any time. The information with regards to the property may also change at any time.



For **more information** or
to make an appointment

apropertiespalma@aproperties.es
Tel: 871 16 01 60
www.aproperties.es