

Son Armadams, Palma de Mallorca

REF. VPM2301053



Apartment for sale with parking in Son Armadams

Features

- ✓ Views
- ✓ Heating
- ✓ Boxroom
- ✓ AACC
- ✓ Terrace
- ✓ Lift
- ✓ Has parking

Price

650,000 €

Surface

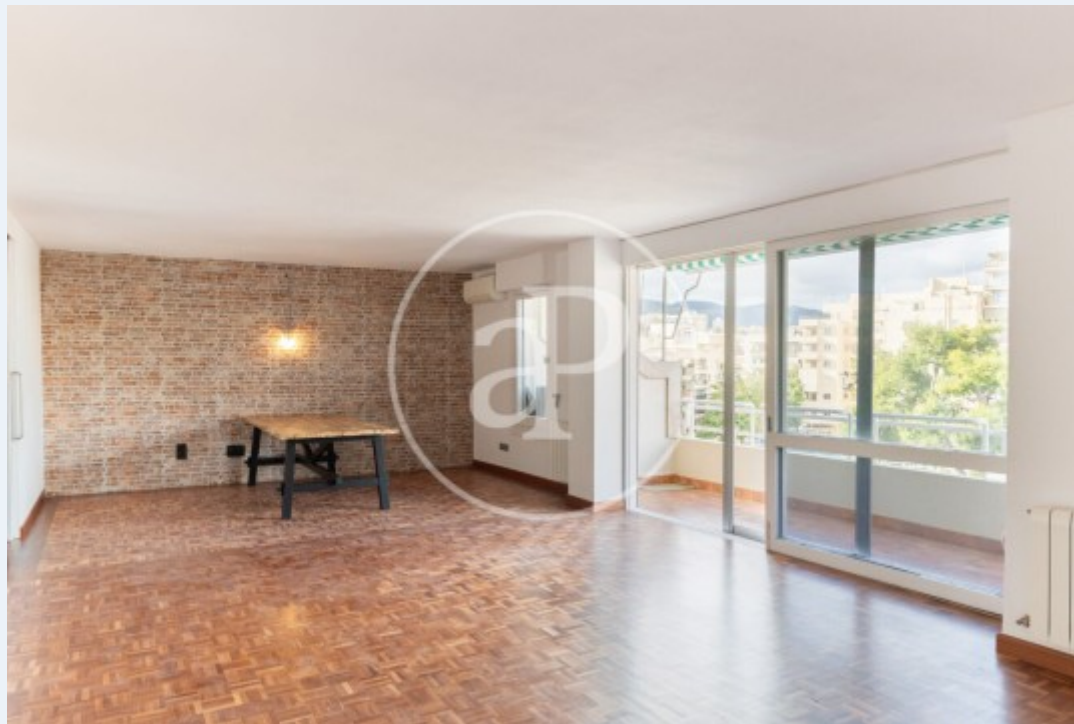
150 m²

Bedrooms

3

Bathrooms

3



This luminous apartment is located on the 6th floor of a very well maintained building with elevator, handicapped accessible entrance and subway parking.

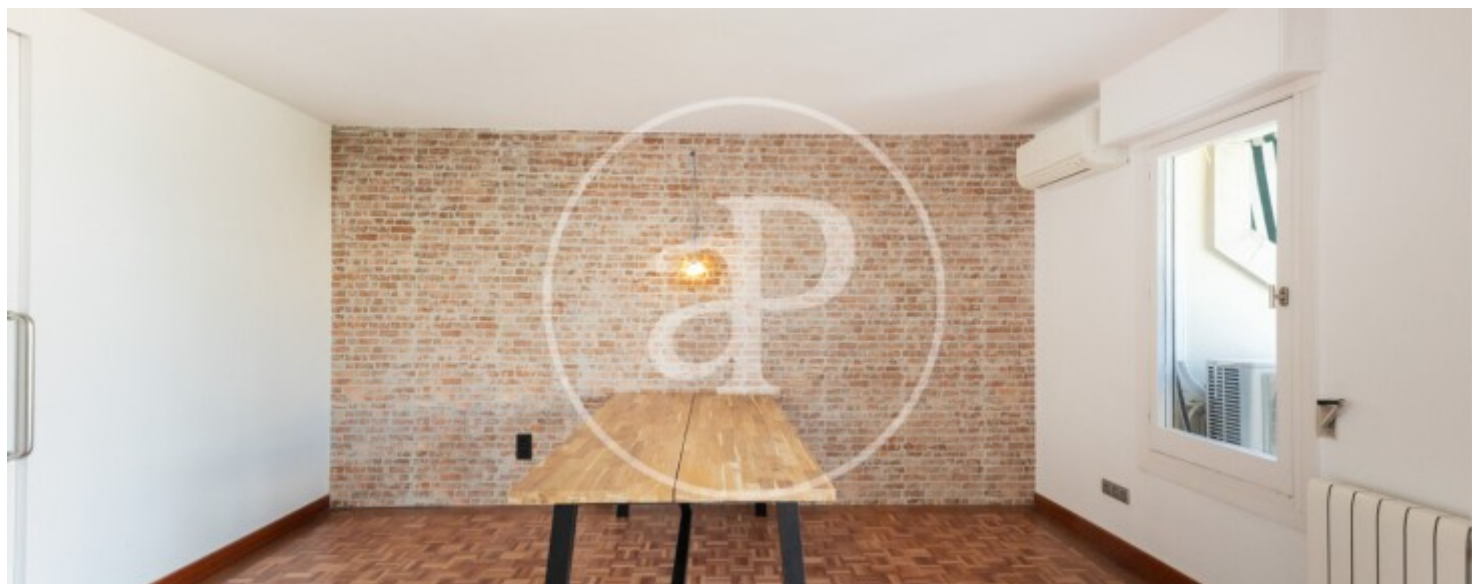
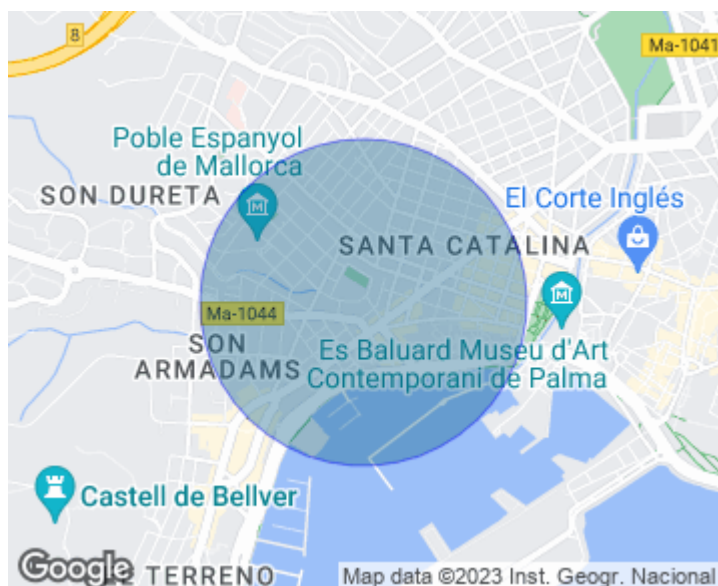
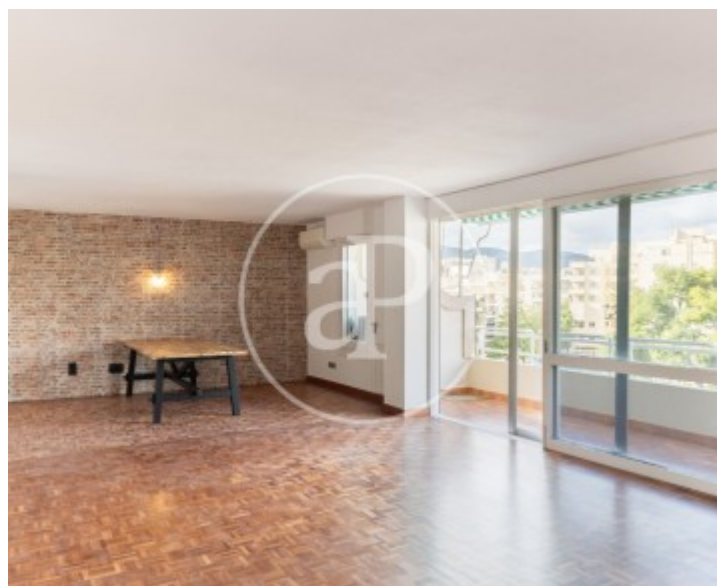
The location of the property is unbeatable, just steps away from the Paseo Marítimo and a few minutes walk from the gastronomic center of Santa Catalina. In addition, the apartment offers a direct view over the popular Palma Tennis Club. From the entrance door to the property, one enters into a hallway with access on one side to the large living room and on the right to the recently renovated kitchen. The spacious living/dining room has a large window with access to a terrace with views

over the Palma Tennis Club. Next to the kitchen, we find a service room with its own bathroom that could be transformed into a storage space or an additional bedroom. The living area of 135 sqm is efficiently distributed with a clear division between the sleeping area and the social area. The sleeping area has 3 double bedrooms, all exterior. The master bedroom has its own balcony and en-suite bathroom. The property includes a storage room and subway parking in the same building. Some spaces need to be updated.

Contact us,
we will be happy to assist you,
to offer you more details and information.

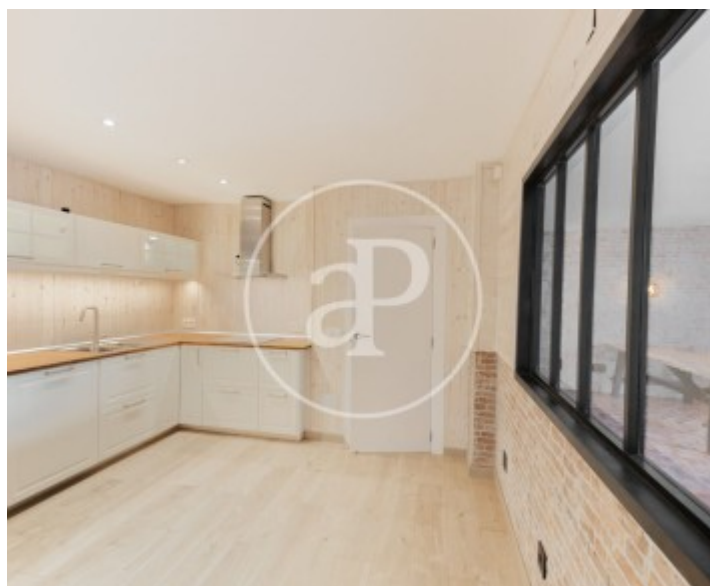
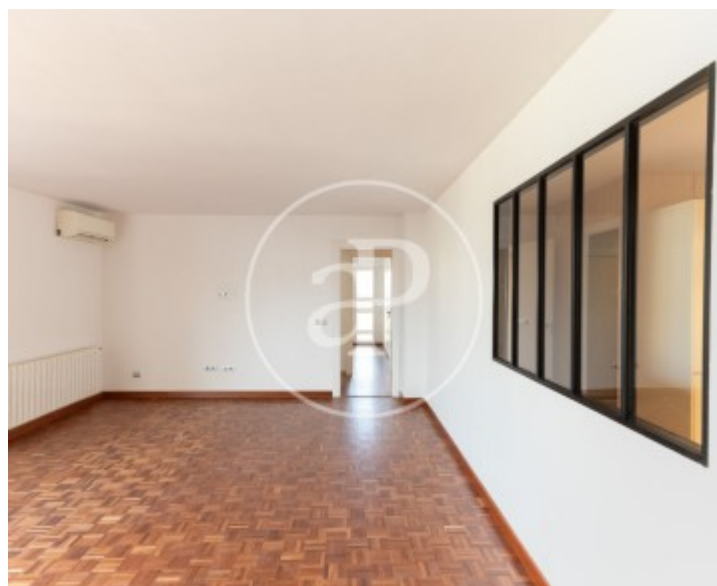
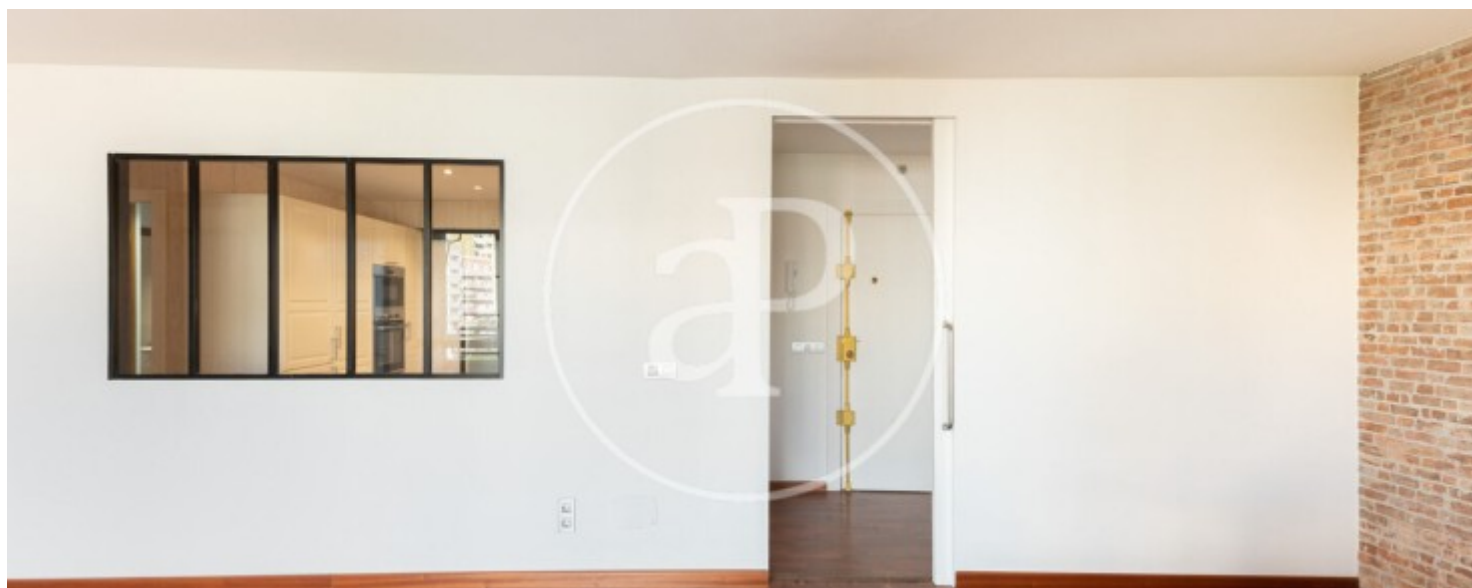
Son Armadams, Palma de Mallorca

REF. VPM2301053



Son Armadams, Palma de Mallorca

REF. VPM2301053





APROPERTIES
REAL ESTATE

Calle Unió 9
07001 Palma
T. 871 16 01 60
www.aproproperties.es

Son Armadams, Palma de Mallorca

REF. VPM2301053



Son Armadams, Palma de Mallorca

REF. VPM2301053



The information about any property is not binding to any offer or contract. Any verbal or written declaration made by aProperties with regards to the value or condition of the property should not be considered accurate or factual. The pictures make reference to some parts of the property at the times that they were taken. The areas, dimensions and distances that are given are approximate and should be checked by the client. The images are computer generated and are just an approximate indication of the real appearance of the property; these may change at any time. The information with regards to the property may also change at any time.



For **more information** or
to make an appointment

apropertiespalma@aproperties.es
Tel: 871 16 01 60
www.aproperties.es