



Son Armadams, Palma de Mallorca

REF. VPM2512009

Apartment for sale Son Armadams

Features

- ✓ Views
- ✓ Heating
- ✓ AACC

Price
590,000 €

Surface

83 m²

Bedrooms

2

Bathrooms

2



Exclusive renovated apartment just steps from Palma's Paseo Marítimo. Located in one of the most sought-after areas of Palma de Mallorca, just a few metres from the Paseo Marítimo, this sophisticated apartment perfectly combines Mediterranean charm with contemporary design and high-quality materials. The property is situated in a traditional four-storey building without a lift and offers a perfectly distributed living area of 83 m². It was fully renovated in 2021, with great attention to detail to create an elegant, functional and bright living space. It features two bedrooms and two bathrooms, providing comfort and privacy. The living room is warm and full of character, highlighted by a natural stone feature wall that adds authenticity and an exclusive architectural touch. The

kitchen and living areas are seamlessly integrated, making them ideal both for everyday living and for entertaining guests. Its prime location allows you to enjoy the sea, the marina, high-end restaurants and all the services of Palma's city centre, making this property an exceptional option as a main residence, a second home or a high-end investment. A property with soul, design and an outstanding location.

Contact us,
we will be happy to assist you,
to offer you more details and information.

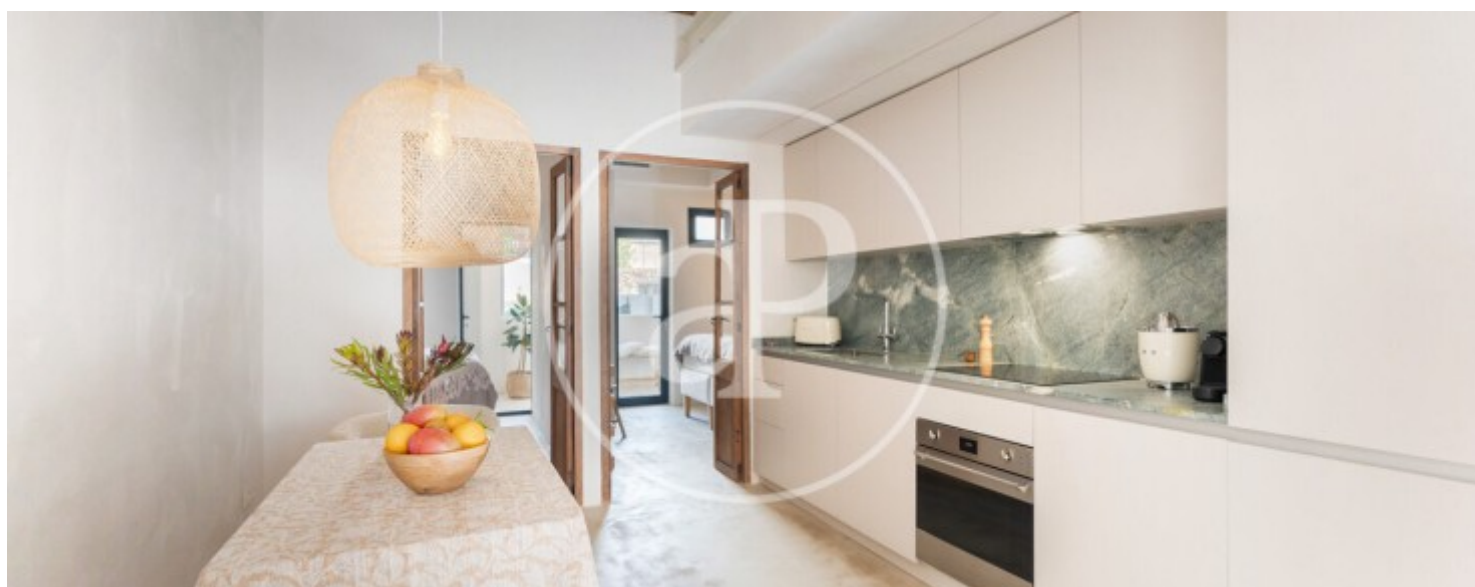
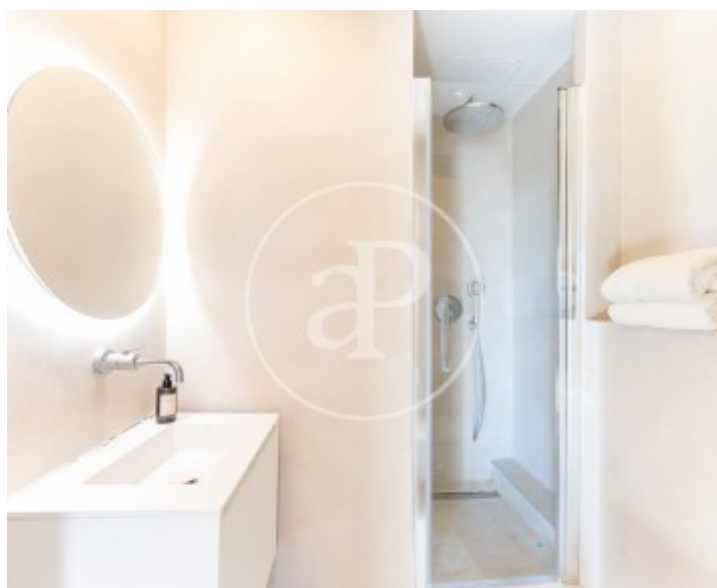
Son Armadams, Palma de Mallorca

REF. VPM2512009



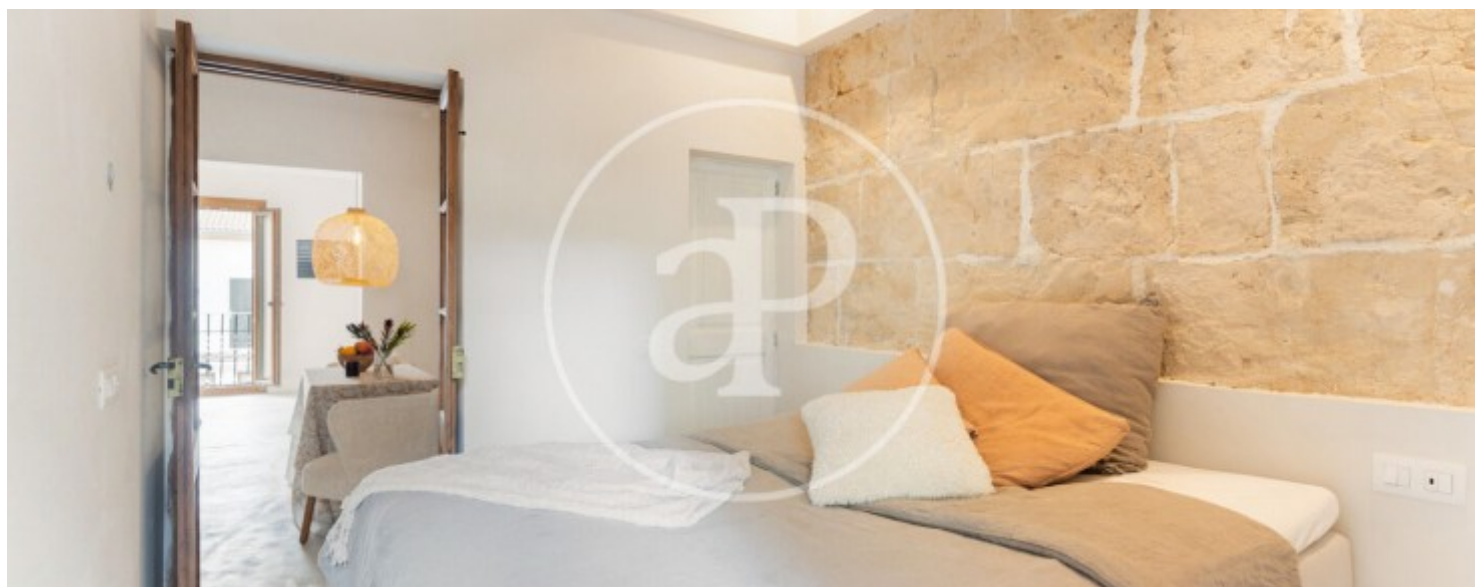
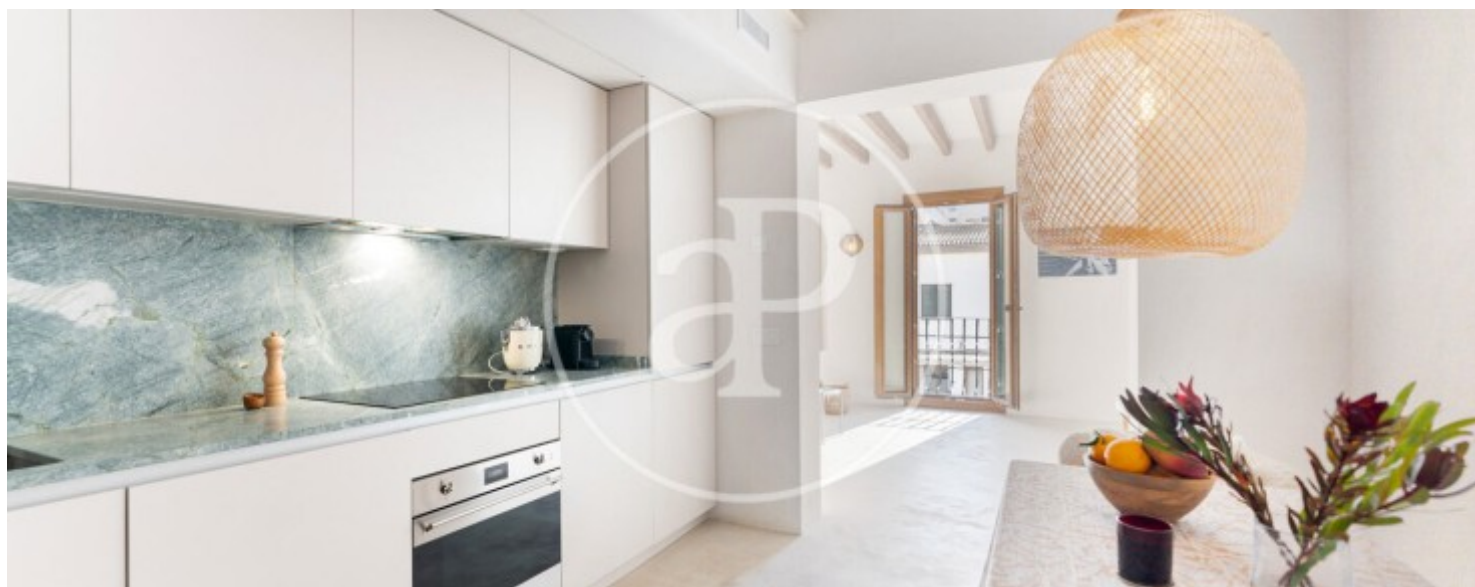
Son Armadams, Palma de Mallorca

REF. VPM2512009



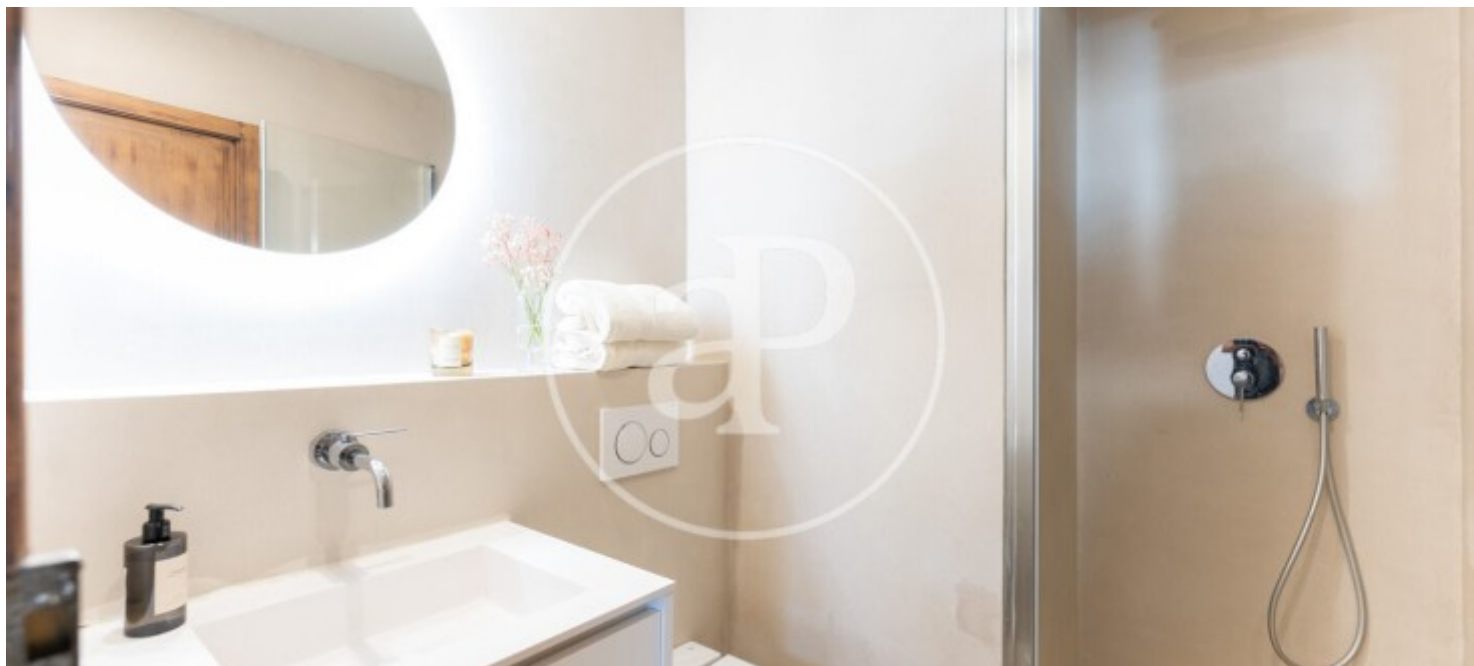
Son Armadams, Palma de Mallorca

REF. VPM2512009



Son Armadams, Palma de Mallorca

REF. VPM2512009



The information about any property is not binding to any offer or contract. Any verbal or written declaration made by aProperties with regards to the value or condition of the property should not be considered accurate or factual. The pictures make reference to some parts of the property at the times that they were taken. The areas, dimensions and distances that are given are approximate and should be checked by the client. The images are computer generated and are just an approximate indication of the real appearance of the property; these may change at any time. The information with regards to the property may also change at any time.

For **more information** or
to make an appointment

apropertiespalma@aproperties.es
Tel: 871 16 01 60
www.aproperties.es