

Son Armadams, Palma de Mallorca

REF. APM2606004

Penthouse for long-term rent in Son Armadams

Features

- ✓ Heating
- ✓ Boxroom
- ✓ Terrace
- ✓ Furnished
- ✓ AACC
- ✓ Lift

Price
2,000 €

Surface

80 m²

Bedrooms

2

Bathrooms

2



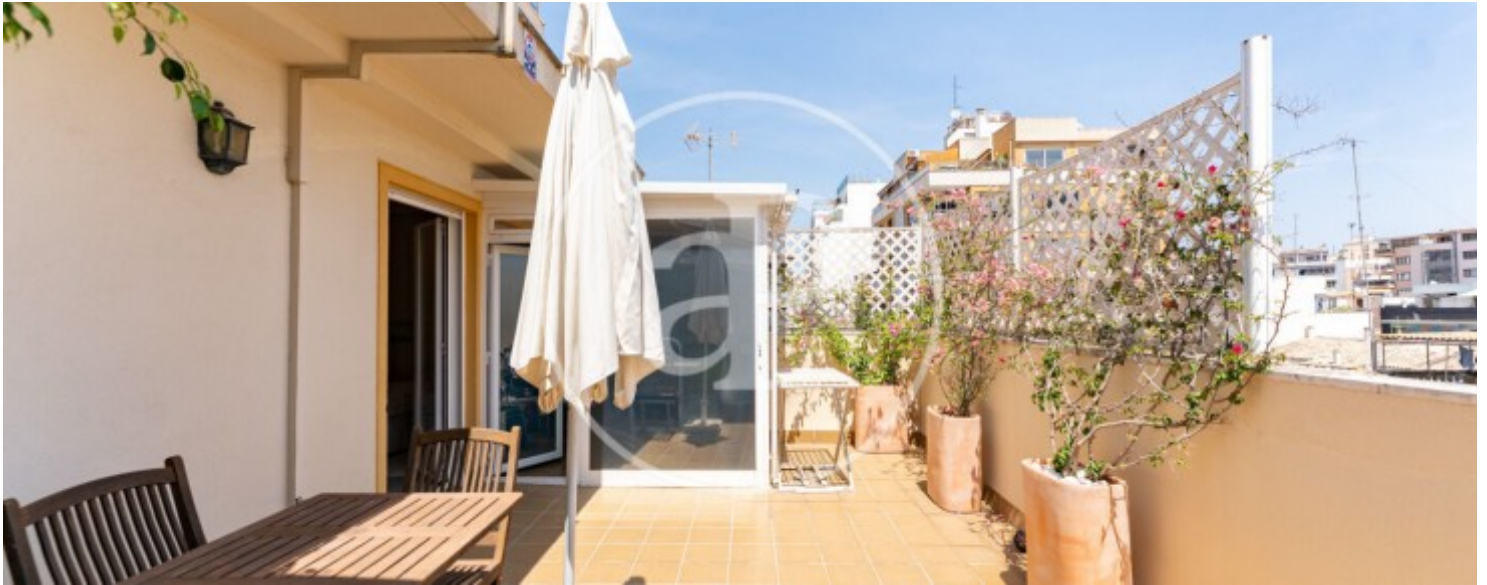
Located in the sought-after Son Armadams neighborhood, this 80-square-meter penthouse features a spacious 40-square-meter private terrace and is just a short walk from the Paseo Marítimo, the Palma Tennis Club, and the iconic Mercat de Santa Catalina. The home stands out for its brightness and a very comfortable layout, combining spacious interiors with a magnificent connection to the outdoors. It features a cozy living-dining room that flows into a pleasant glass-enclosed area serving as a winter dining room, ideal as a multipurpose space with direct access to the terrace, allowing you to enjoy natural light all day long. The kitchen is separate and fully equipped, offering practicality for everyday living. It features two bedrooms. The master bedroom is spacious, with built-in

closets, an en-suite bathroom, and direct access to the terrace. The second bedroom also features a double bed. The home also includes two full bathrooms with showers. The terrace, one of the property's major attractions, offers a variety of possibilities thanks to its outdoor dining area, chill-out space, vegetation that provides privacy, and a practical storage room. Notable features include air conditioning, gas heating via radiators, double-glazed windows, and built-in closets. It is a very bright home, situated in a quiet building and perfectly...

Contact us,
we will be happy to assist you,
to offer you more details and information.

Son Armadams, Palma de Mallorca

REF. APM2606004



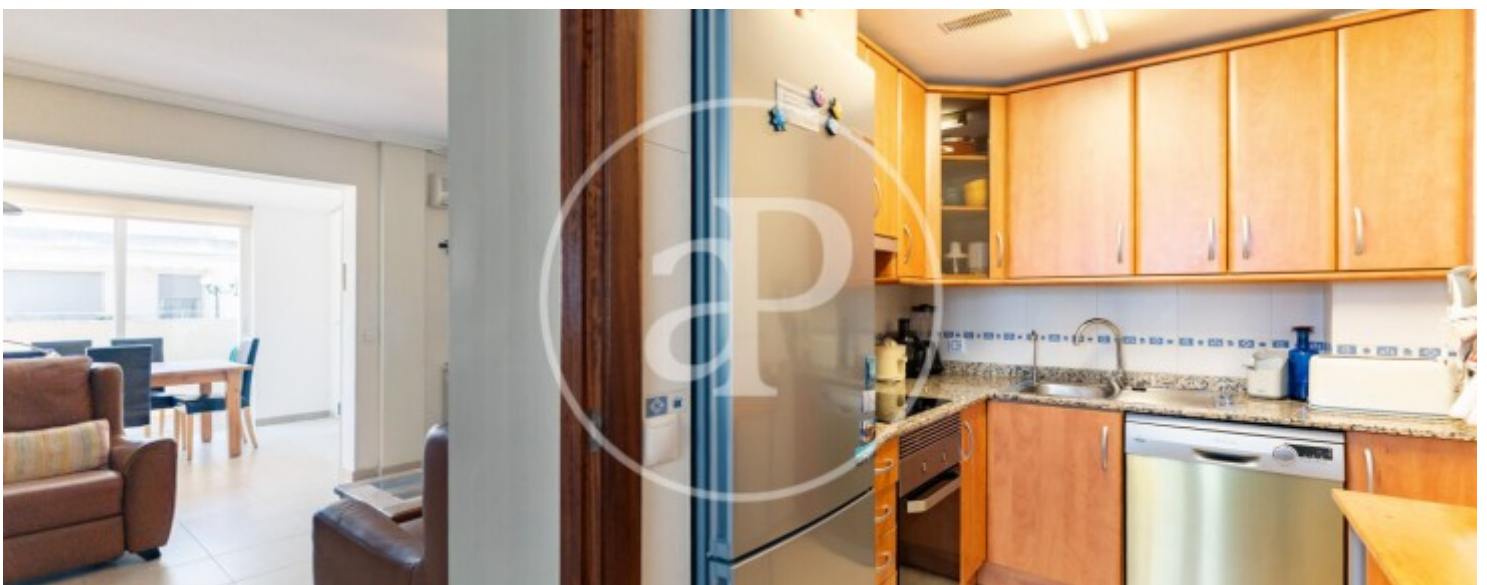
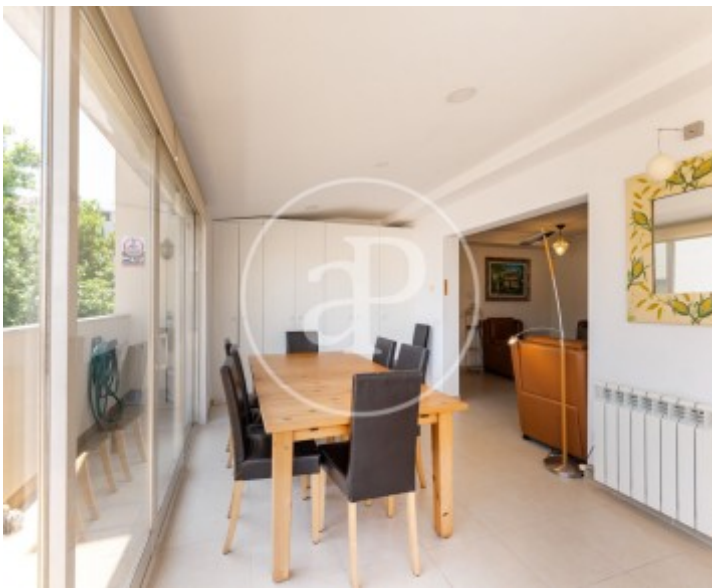
Son Armadams, Palma de Mallorca

REF. APM2606004



Son Armadams, Palma de Mallorca

REF. APM2606004



Son Armadams, Palma de Mallorca

REF. APM2606004



The information about any property is not binding to any offer or contract. Any verbal or written declaration made by aProperties with regards to the value or condition of the property should not be considered accurate or factual. The pictures make reference to some parts of the property at the times that they were taken. The areas, dimensions and distances that are given are approximate and should be checked by the client. The images are computer generated and are just an approximate indication of the real appearance of the property; these may change at any time. The information with regards to the property may also change at any time.

For **more information** or
to make an appointment

apropertiespalma@aproperties.es
Tel: 871 16 01 60
www.aproperties.es